

Kitsap County

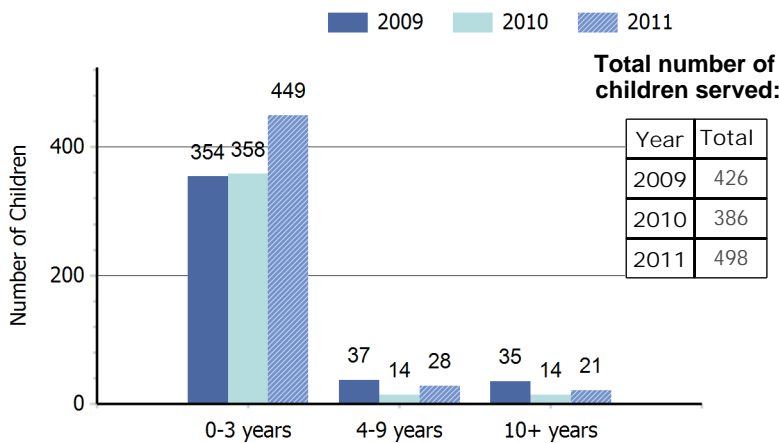
Profile of Children and Youth with Special Health Care Needs

Population of Children 0-19 Years by Age Group and Year

Age Group	1990	2000	2008	2009
0-4 years	15,770	15,536	16,200	16,305
5-9 years	15,615	17,468	16,630	16,586
10-14 years	14,116	18,194	17,275	17,133
15-19 years	13,247	17,170	18,010	17,804
Total	58,748	68,368	68,115	67,828

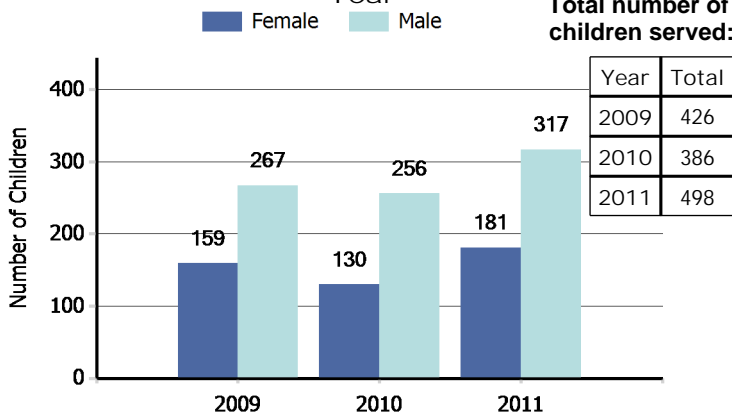
Source: Community Health Assessment Tool (CHAT), 1990-2009 Population Estimates: Population Estimates for Public Health Assessment, Washington State Department of Health and Krupski Consulting, December 2009. Accessed 12/9/11.

Number¹ of Children Served by Children with Special Health Care Needs Program by Age Group and Year



¹The number of children served by age may not equal the total number of children served due to non-reporting of age for some cases. Source: Child Health Intake Forms, Children with Special Health Care Needs Program, Washington State Department of Health, 5/15/12.

Number² of Children Served by Children with Special Health Care Needs Program by Gender and Year

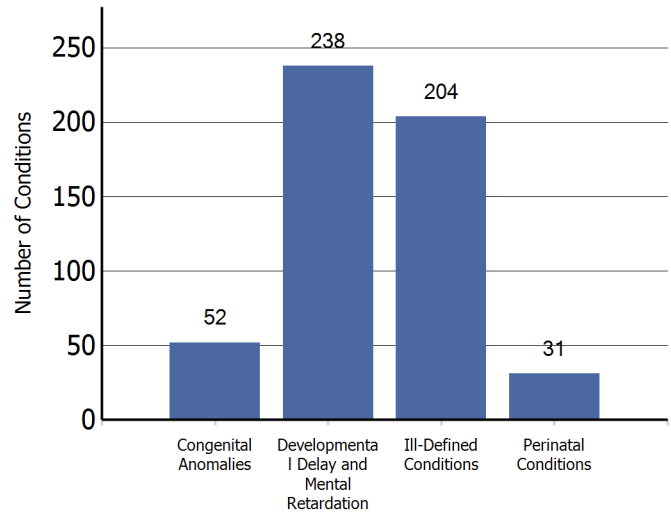


²The number of children served by gender may not equal the total number of children served due to non-reporting of gender for some cases. Source: Child Health Intake Forms, Children with Special Health Care Needs Program, Washington State Department of Health, 5/15/12.

"Children with special health care needs are children who have, or are at increased risk for, chronic physical, developmental, behavioral, or emotional conditions and who also require health and related services of a type or amount beyond that required by children generally."

(Maternal and Child Health Bureau)

Leading Four Diagnostic Categories³ among Children Served by the Children with Special Health Care Needs Program: 2011



³ Child may have multiple conditions.

Source: Child Health Intake Forms, Children with Special Health Care Needs Program, Washington State Department of Health, 5/15/12.

Number of Children in Special Education Services under the Individuals with Disabilities Education Act (IDEA) Part B, as of December 1, 2010

Diagnostic Category	Number
Specific Learning Disability	1,691
Communication Disorder	907
Health Impairment	881
Developmental Delay - Preschool	624
Autism	517
Emotional/Behavioral Disability	182
Intellectual Disabilities	167
Multiple Disabilities	133
Hearing Impairment	45
Orthopedic Impairment	34
Traumatic Brain Injury	11
Visual Impairments	10
Deafness	6
Deaf - Blindness	<5
TOTAL	5,208

Source: Office of Superintendent of Public Instruction, Special Education Child County and Placement Data, 1/3/12.

This county profile is part of the Children and Youth with Special Health Care Needs: Washington State Report. For more information, contact the Children with Special Health Care Needs Program at (360) 236-3571.

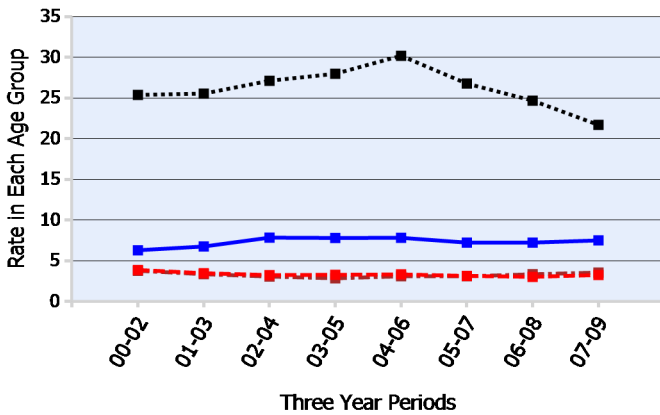
Number⁴ of Children Age 0-35 Months with an Individualized Family Service Plan Who Received Early Intervention Services

July 2009 - June 2010	223
July 2010 - June 2011	258

⁴Unduplicated count from Kitsap County.
Source: Early Support for Infants and Toddlers (ESIT), Washington State Department of Early Learning, Accessed 11/15/11. Program information and data are available at: <http://www.del.wa.gov/publications/esit/Default.aspx>.

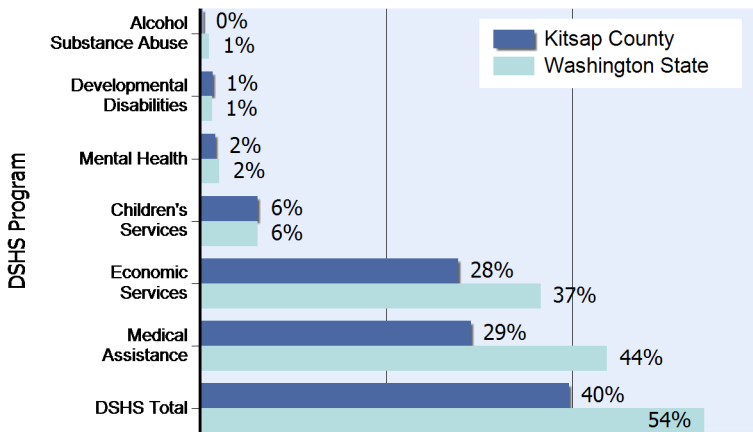
Age-Specific Hospitalization Rate⁶ for Chronic Conditions per 1,000 Children Ages 0-19

● <1 years ■ 5-14 years
■ 1-4 years ■ 15-19 years



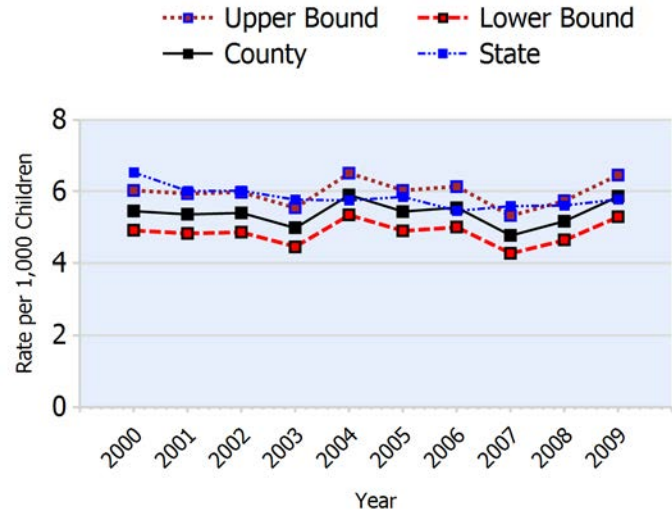
⁶ Number of hospitalizations per 1,000 population of children in each age group calculated as three-year rolling averages.
Source: Community Health Assessment Tool (CHAT), Hospitalization Discharge Data: Comprehensive Hospital Abstract Reporting System (CHARS), Washington State Department of Health, Center for Health Statistics, Accessed 9/21/11.

Percent of Children Age 0-17 in Programs of the Department of Social and Health Services:⁷ June 2007 - July 2008



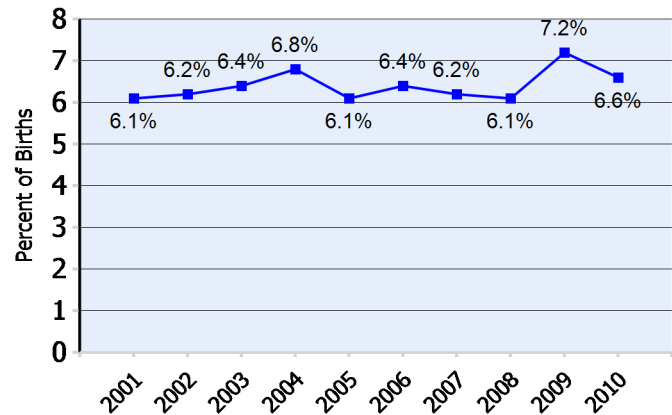
⁷Based upon unduplicated count of children within each service category.
Source: Client Services Database, Research and Data Analysis Division, Department of Social and Health Services, Accessed 11/15/11.
Note: In 2010, the Medical Assistance program moved from the Washington State Department of Social and Health Services to the Health Care Authority. Client data and program descriptions are available at <http://clientdata.rda.dshs.wa.gov/>.

Hospitalization Rate⁸ for Chronic Conditions per 1,000 Children Age 0-19 Years



⁸Number of hospitalizations per 1,000 population of children 0-19.
Source: Community Health Assessment Tool (CHAT), Hospitalization Discharge Data: Comprehensive Hospital Abstract Reporting System (CHARS), Washington State Department of Health, Center for Health Statistics, Accessed 9/21/11.

Number and Percent⁵ of Babies Born with Low Birth Weight (less than 2,500 grams)



⁵ Percent of births for which the birthweight is known.
Source: Washington State Birth Files, Washington State Department of Health, 11/15/11.

Number of Children 0-17 in DSHS Programs:		Year LBW All Births	
Alcohol Substance Abuse	214	2001	178 2,941
Developmental Disabilities	876	2002	182 2,925
Mental Health	1,048	2003	193 3,010
Children's Services	3,800	2004	204 3,006
Economic Services	17,023	2005	177 2,900
Medical Assistance	17,883	2006	194 3,039
DSHS Total	24,322	2007	180 2,892
		2008	184 3,038
		2009	208 2,890
		2010	192 2,922

