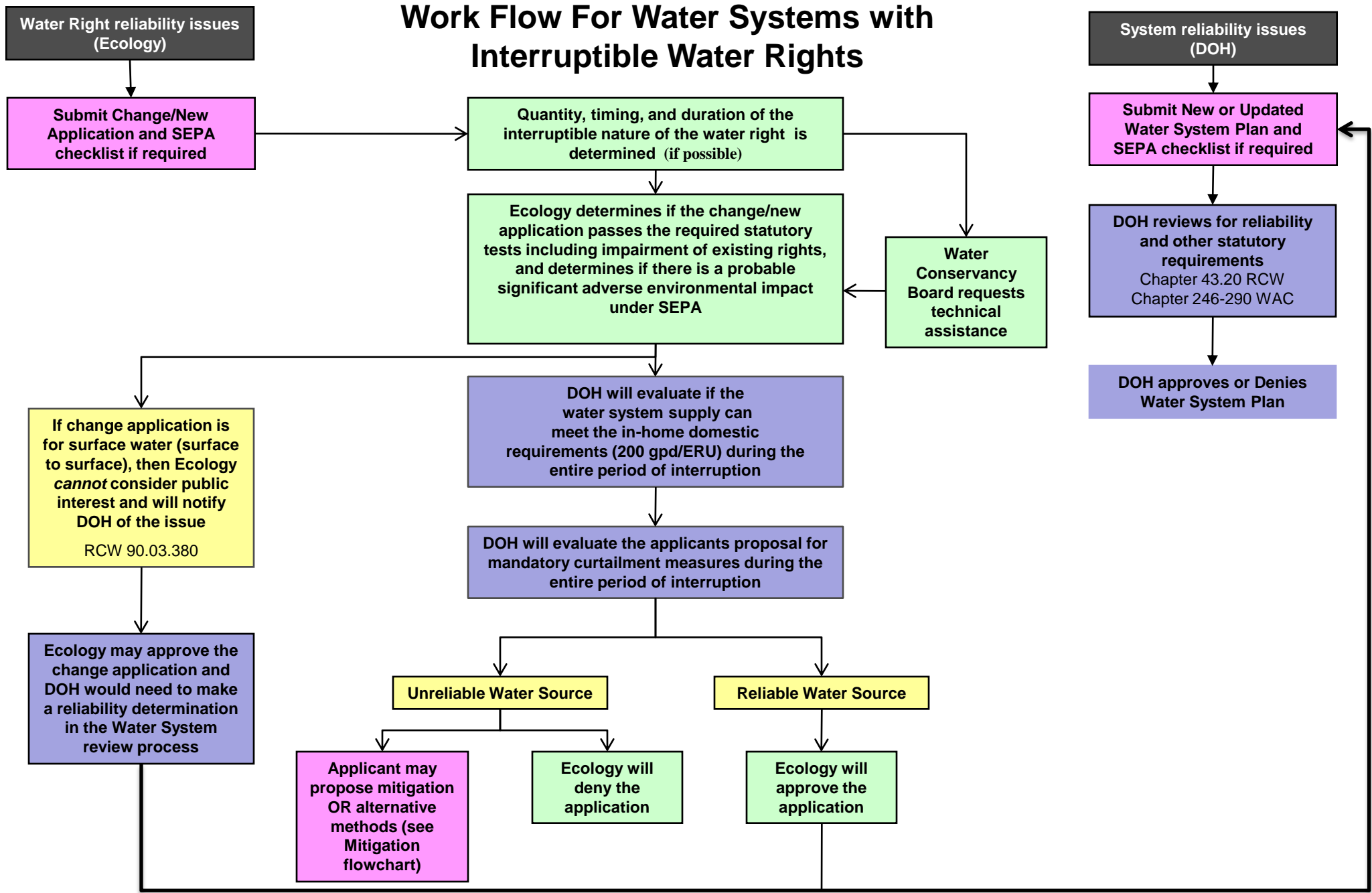
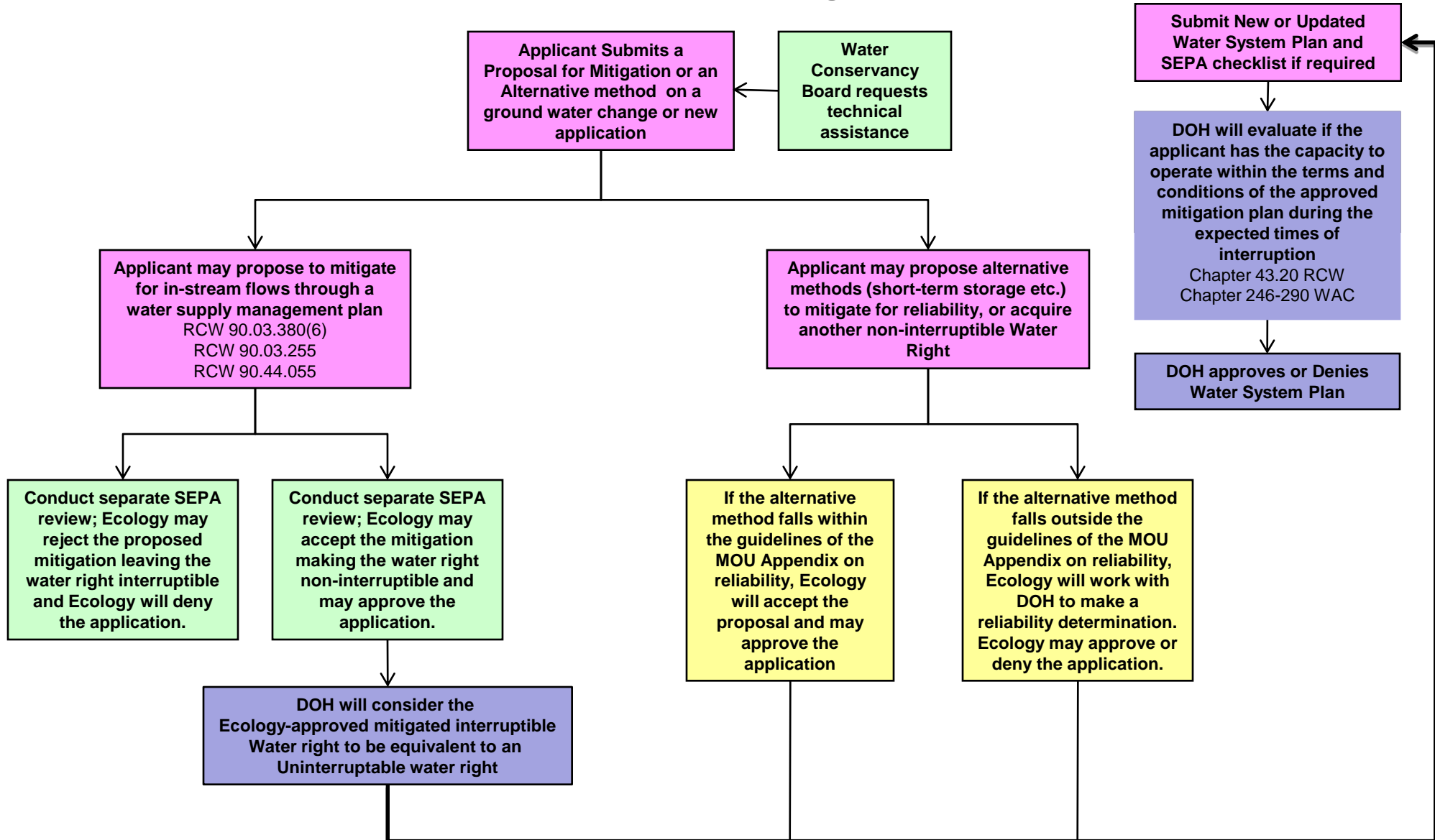


Work Flow For Water Systems with Interruptible Water Rights



Ecology/Conservancy Board responsibility
 DOH responsibility
 Joint Ecology & DOH responsibility
 Purveyor/Applicant responsibility

Work Flow For Mitigating Interruptible Water Rights



Ecology/Conservancy Board responsibility



DOH responsibility

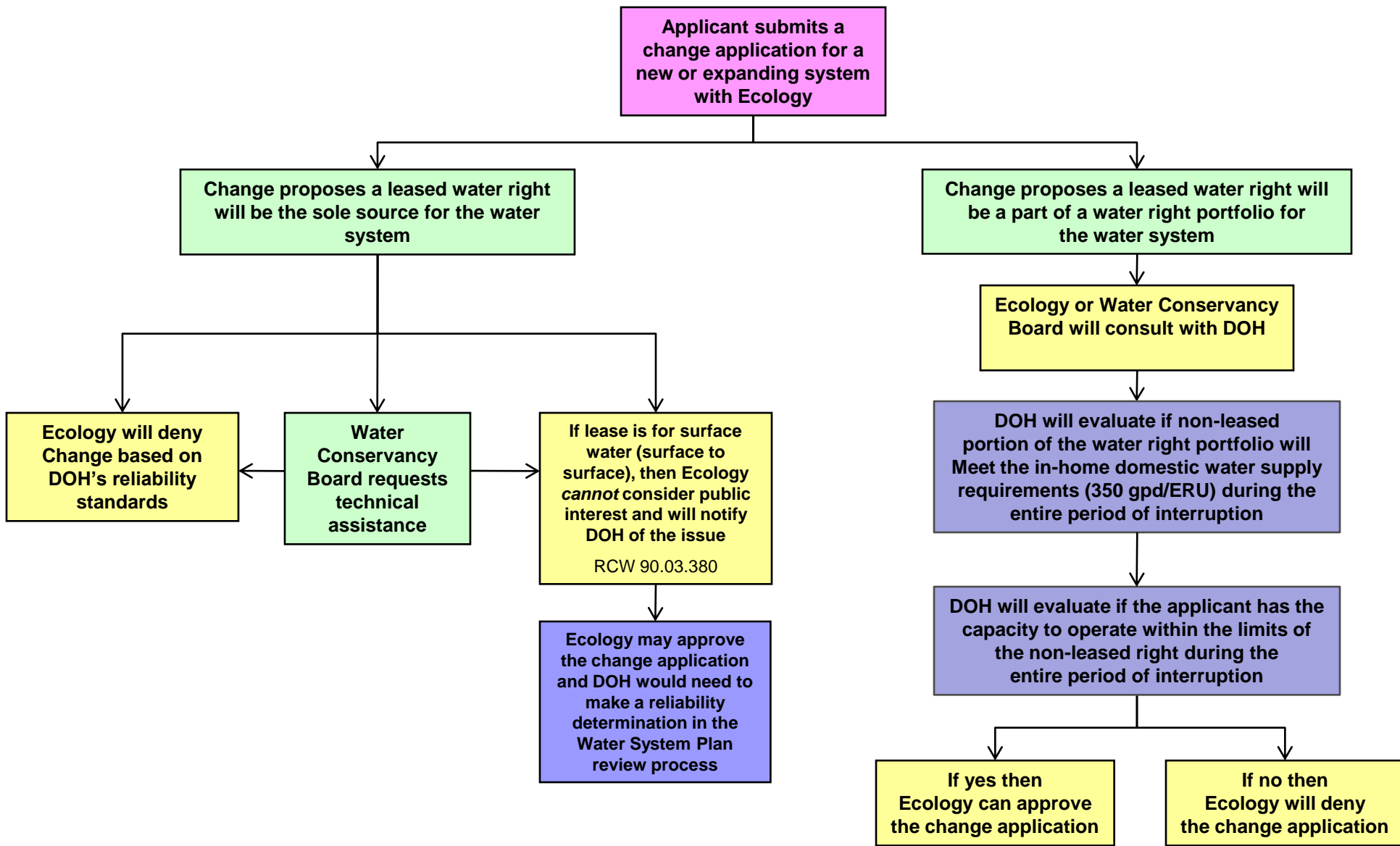


Joint Ecology & DOH responsibility



Purveyor/Applicant responsibility

Work Flow For Water Systems with Leased Water Rights



Ecology/Conservancy Board responsibility

DOH responsibility

Joint Ecology & DOH responsibility

Purveyor/Applicant responsibility