



Injury and Violence

For persons with disabilities, this document is available on request in other formats. To submit a request, please call 1-800-525-0127 (TDD/TTY 1-800-833-6388).

“Injuries are often called "accidents," suggesting that they are unpredictable and unavoidable. However, there are steps that communities and individuals can take that are proven to stop injuries before they happen. This is the tragedy of injury – most of the resulting deaths, disabilities, and disfigurements need not have happened and keep children from reaching their full potential.¹ In addition to the tremendous burden of grief on families, injuries cause a significant burden on state resources in terms of costs, lost productivity, and long-term disability.²

In Washington State and nationally, injuries are the leading cause of death for children and adolescents. In Washington, about 200 youth ages 10-19 die from injuries and about 3,000 are hospitalized for a nonfatal injury each year.³

Key Findings About Adolescent Unintentional Injury Deaths in Washington State

- Most injury related deaths and hospitalizations among Washington youth are unintentional. Unintentional injuries account for about 65 percent of the injury deaths of youth ages 10-19 and 73 percent of the nonfatal hospitalizations.²
- **Age:** Among youth, unintentional injury deaths increase with age. Youth ages 18-19 years have the highest injury death rates.⁴
- **Gender:** In 2007, Washington 10-19 year old males were about 2.5 times more likely to die or to be hospitalized from unintentional injuries.³
- **Race/ Ethnicity:** Washington’s American Indian/Alaska Native youth and Black youth have higher overall injury death rates than children in other racial groups.^{3,5}
- **Rural-Urban Residence:** In 2005-2007, Washington 10-19 year olds living in rural areas had higher death rates from unintentional injuries (22 per 100,000) compared to those living in urban areas (15 per 100,000).³

¹ Centers for Disease Prevention and Control. Adding Power to Our Voices. Accessed September 2009 at:

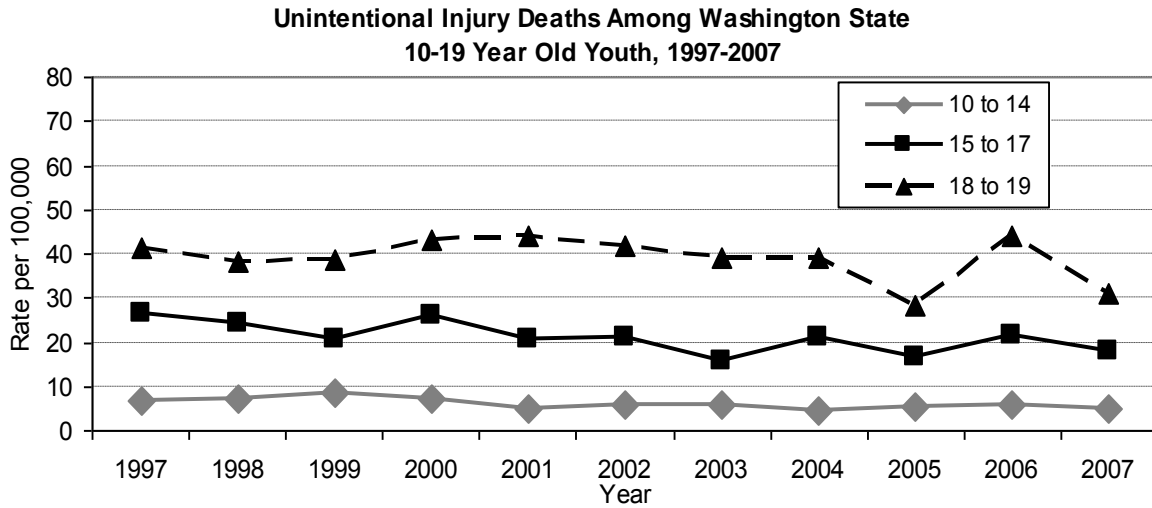
<http://www.cdc.gov/injury/CDCFramingGuide-a.pdf>

² Washington State Department of Health Injury Prevention Program, Washington State Childhood Injury Report, 2004. Accessed July 2009 from: <http://www.doh.wa.gov/hsqa/emstrauma/injury/pubs/wscir/WSCIR.pdf>

³ Washington State Department of Health, Injury Prevention Program, Injury Data Tables. Accessed July 2009 from: http://www.doh.wa.gov/hsqa/emstrauma/Injury/data_tables/

⁴ Washington State Department of Health, Center for Health Statistics, Death Certificate data (2008 release)

⁵ Caution should be used in interpreting these differences due to small numbers of deaths in some racial groups.



Trends: Unintentional injury deaths for Washington 10-19 year old youth combined decreased significantly from 1997 to 2007.³

Leading Causes of Death Among Adolescents

While adolescent motor vehicle crash and drowning death rates have not changed since 1999, poisoning deaths have increased among adolescents. This may be due to an increase in prescription drug abuse. See Substance Use section for more information.

Year	Cause #1 (number)	Cause #2 (number)	Cause #3 (number)
1999	Motor Vehicle Crash (95)	Drowning (20)	Poisoning (8)
2000	Motor Vehicle Crash (113)	Drowning (13)	Poisoning (9)
2001	Motor Vehicle Crash (100)	Drowning (16)	Poisoning (9)
2002	Motor Vehicle Crash (115)	Drowning (10)	Poisoning (9)
2003	Motor Vehicle Crash (98)	Drowning (14)	Fall (7)
2004	Motor Vehicle Crash (88)	Poisoning (16)	Drowning (11)
2005	Motor Vehicle Crash (103)	Poisoning (13)	Drowning (13)
2006	Motor Vehicle Crash (103)	Poisoning (29)	Drowning (15)
2007	Motor Vehicle Crash (93)	Poisoning (16)	Drowning (10)

⁶ CDC Wisqars Data Website. Available at: <http://www.cdc.gov/injury/wisqars/>

Occupational Injury⁷

- The minimum age for most work by adolescents in Washington State is 14, except under special conditions.
- Nationally, occupational injury rates for adolescents under age 18 are more than 50 percent higher than those for workers 18 years and older. Statewide, the estimate of the injury rate for this age group has been found to be two times greater than for adult workers.⁸
- Among Washington minors (ages 11 to 17), from 2000 – 2008 there was a total of 13,568 accepted workers’ compensation injury claims reported to the Department of Labor and Industries, an average of 1,507 per year. There were 1,066 accepted injury claims in 2008.⁹
- In Washington State, 94 percent of injury claims among adolescents are in 16- and 17-year-olds and 56 percent are male.
- Most injury claims (80 percent) cover medical care costs only, while 20 percent involve lost work time of more than 3 days, indicating a serious injury and may likely cause the teen to miss other age-appropriate activities such as school and extra-curricular commitments.
- Nationally, an estimated one-third of work injuries are treated in emergency departments. Most injuries involve lacerations; strains and sprains from heavy lifting or slips and falls; and contusions and burns; however more serious injuries such as fractures, concussions, dislocations, amputations and head injuries are not uncommon.¹⁰
- From 1988 to 2008, there were a total of 17 work-related fatalities among Washington youth reported to the workers’ compensation system.
- Most adolescent work-related injuries occur in the hospitality and food service sector, and other retail settings (58 percent); while over the past 20 years, 53 percent of occupational fatalities occurred in agricultural settings followed by construction with 29 percent of fatal injuries; most of the fatalities in these industries involved machinery.

Percent of Washington Students Reporting Employment by Hours a Week by Grade and Gender, 2008		
	Employed 5-30 hours/week % (± margin of error)	Employed more than 30 hours/week % (± margin of error)
Grade		
8 th	9% (± 1)	2% (±0.4)
10 th	12% (± 2)	2% (± 0.4)
12 th	34% (± 2)	4% (± 1)
Gender (10th grade)		
Male	15% (± 3)	3% (± 1)
Females	10% (± 2)	1% (± 0.3)

Source: Healthy Youth Survey 2008

⁷ Data provided by Mary Miller, Washington State Department of Labor & Industries

⁸ Nonfatal Occupational Injuries and Illnesses- United States, 2004. Accessed September 2009 at:

<http://www.cdc.gov/mmwr/preview/mmwrhtml/mm5616a3.htm>

⁹ A work-related injury that requires more than first aid should be reported as a claim for industrial insurance, also known as workers’ compensation, to cover costs for medical care, lost work time, or both. There are approximately 8 percent more claims that are reported to the system but are not accepted for various reasons. In addition, due to issues related to underreporting, it is estimated that claims reported to workers’ compensation programs may under-represent the actual number of workplace injuries.

¹⁰ NIOSH Alert: Preventing Deaths, Injuries, and Illnesses of Young Workers. Cincinnati, OH: Department of Health and Human Services, Public Health Service, CDC, National Institute for Occupational Safety and Health, DHHS (NIOSH) Publication No. 2003-128.

- In 2006, among Washington students who worked for pay, 8th graders were significantly more likely report an injury that required medical attention. This may be due to an increased willingness among younger students or their parents to seek medical help when injured. About 29 percent of 8th graders, 26 percent of 10th graders and 19 percent of 12th graders reported having an occupational injury that required medical attention. Among Washington 10th graders who had worked for pay, about 21 percent of females and 30 percent of males reported experiencing an occupational injury that required medical attention.¹¹

Adolescent Injury Risk Behaviors

Additional Data:

- Increasing the number of youth using seat belts most of the time or always when riding in a car to 92 percent is a Healthy People 2010 **Critical Health Objective**.¹²

Injury Risk Behaviors Among Washington 8th, 10th and 12th Graders, 2008			
	Grade 8 (± margin of error)	Grade 10 (± margin of error)	Grade 12 (± margin of error)
Seatbelt Use (Most of the time or always) *Critical Health Objective*	92% (± 1)	92% (± 1)	93% (± 1)
Life Vest Use (Always) among boaters	53% (± 2)	40% (± 3)	34% (± 3)
Bike Helmet Use (Most of the time or always in past year) among bike riders	31% (± 4)	19% (± 3)	20% (± 3)
Riding with Driver Who Had Been Drinking Alcohol (Once or more in past 30 days) *Critical Health Objective*	19% (± 1)	24% (± 2)	23% (± 2)
Driving After Drinking Alcohol (Once or more in past 30 days)	4% (± 1)	6% (± 1)	12% (± 1)

Source: Washington Healthy Youth Survey 2008

Sixth Grade Injury Risk Behavior Results, 2008¹³

- Seatbelt use: About 96 percent reported wearing a seatbelt most of the time or always.
- Helmet use: About 48 percent reported wearing a helmet most of the time or always when riding a bike.
- Riding with a drinking driver: About 22 percent had ever ridden in a car with someone who had been drinking alcohol.

¹¹ Washington State Healthy Youth Survey 2006

¹² Department of Health and Human Services (US). Healthy People 2010: Understanding and Improving Health. 2nd edition. Washington, DC: US Government Printing Office; November 2000.

¹³ Washington State Healthy Youth Survey 2008; questions for 6th graders are phrased slightly differently than for the older youth. See <https://fortress.wa.gov/doh/hys/> for more information.

Motor Vehicle Crashes ***Critical Health Objective***

Motor Vehicle Crash Death Rates per 100,000 Ages 10-19, Washington (2005-2007) and United States (2004-2006)¹⁴			
Characteristic	WA Number	WA Rate per 100,000 (±margin of error)	US Rate per 100,000¹⁵ (±margin of error)
Age			
Ages 10-14	38	**	3.8 (± 1.5)
Ages 15-19	233	16.9 (±2.3)	23.4 (± 0.4)
Ages 10-19	271	10.1 (±1.3)	13.7 (± 0.2)
Ages 15-24	528	19.2 (±1.7)	25.6 (± 0.1)
Gender (Ages 10-19)			
Male	187	13.5 (± 2.1)*	19.2 (± 0.3)*
Female	84	6.4 (± 1.5)	10.4 (± 0.2)
Race/ Ethnicity (Ages 10-19)			
White, Non-Hispanic	185	9.1 (± 1.5)	15 (± 0.3)
Black, Non-Hispanic	15	**	10 (± 0.4)
American Indian, Non-Hispanic*	21	39.1 (± 20.6)	24.7 (± 2.7)*
Asian/ Pacific Islander, Non-Hispanic	12	**	6.6 (± 0.7)
Hispanic	38	12.5 (± 4.7)	12.9 (± 0.5)
Rural- Urban Residence (Ages 10-19)			
Urban	206	9.2 (± 1.3)	-
Rural	65	13.9 (± 3.4)*	-

*Significant difference based on significance testing at $p < 0.05$

** Numbers too small to report rates

Source: Washington State Department of Health Death Certificates

Disparities:¹⁶

Among Washington 10-19 year olds in 2005-2007, motor vehicle crash death rates were **higher** for males living in rural areas. Nationally, rates were higher for Non-Hispanic American Indian youth compared to Non-Hispanic Whites. Caution should be used in interpreting racial differences due to small numbers.

Additional Data:

- Reducing motor vehicle crash deaths are one of the **21 National Critical Health objectives** for adolescents and young adults. Motor vehicle crash deaths are the leading cause of injury deaths for Washington youth.¹⁷
- Nationally in 2007, about 11 percent of high school students reported they never or rarely wore their seat belts¹⁸, compared to an estimated 3 percent of Washington high school students in 2008.¹⁹

¹⁴ Unintentional Motor vehicle traffic deaths only. Source: Washington Death Certificate Data; Estimates generated from VISTAPhW: Years 1999-2002 combined. EPE Unit, Public Health - Seattle & King County, June 2003.

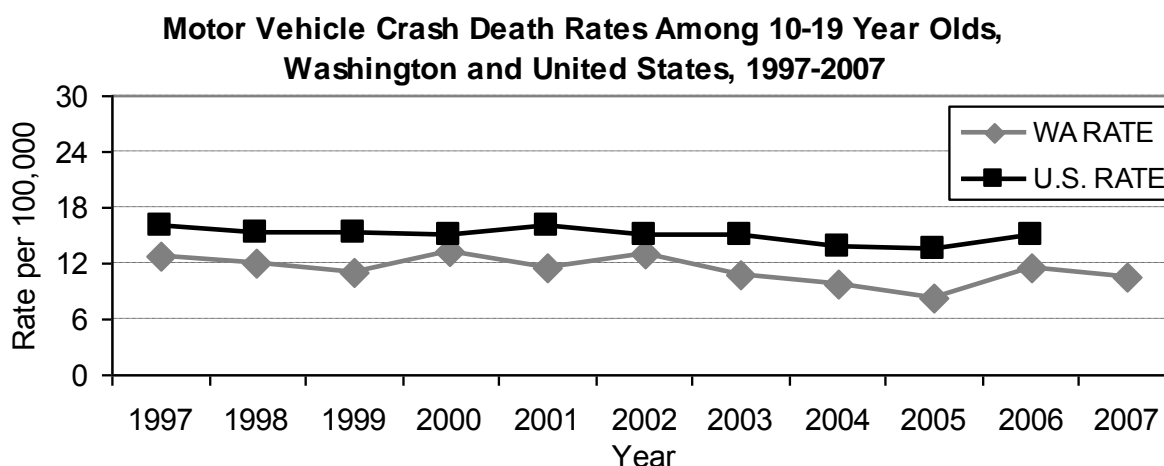
¹⁵ CDC Wisqars Data Website. Available at: CDC Wisqars Data Website. Available at: <http://www.cdc.gov/injury/wisqars/>

¹⁶ Significance based on p-values less than 0.05.

¹⁷ Department of Health and Human Services (US). Healthy People 2010: Understanding and Improving Health. 2nd edition. Washington, DC: US Government Printing Office; November 2000.

- In Washington in 2008, an estimated 23 percent of high school students reported that they rode with a driver who had been drinking alcohol in the past 30 days, and about 8 percent said that they drove after drinking alcohol in the past 30 days. Among Washington 6th graders in 2008, about 22 percent said they had ever ridden in a car with someone who had been drinking alcohol.¹⁹
- Nationally in 2007, about 29 percent of high school students reported that they rode with a driver who had been drinking alcohol in the past 30 days, and about 11 percent reported that they drove after drinking alcohol in the past 30 days.¹⁸

Trends: Motor vehicle crash deaths among Washington youth ages 10-19 decreased significantly from 1997 to 2007.



Source: Washington State Department of Health, Death Certificates

Washington Incidence: From 2005-2007, an average of 90 Washington youth ages 10-19 died in motor vehicle crashes per year for a death rate of 10 per 100,000.¹⁴

United States Incidence: Nationally, the motor vehicle crash death rate from 2004-2006 for youth ages 10-19 was about 14 per 100,000.²⁰

¹⁸ Youth Risk Behavioral Surveillance- 2007, MMWR, May 21, 2004/ Vol 53/ No SS-2. Accessed July 2009 from: <http://www.cdc.gov/mmwr/preview/mmwrhtml/ss5704a1.htm>

¹⁹ Based on a synthetic high school estimate generated from Washington State Healthy Youth Survey, 2008, grades 8,10,12

²⁰ National Center for Injury Prevention and Control, WISQARS Injury Mortality Reports, 1999-2006. http://webappa.cdc.gov/sasweb/ncipc/mortrate10_sy.html

Suicide ***Critical Health Objective***

Youth Suicide Deaths Ages 10-19, WA (2005-2007) and US (2004-2006)²¹			
Characteristic	WA Number	WA Rate per 100,000 (± margin of error)	U.S. Rate²² per 100,000 (± margin of error)
Age			
Ages 10-14	9	0.7 (± 0.6)	1.2 (± 0.1)
Ages 15-19	120	8.7 (± 1.7)	7.7 (± 0.2)
Ages 10-19	129	4.8 (± 0.9)	4.5 (± 0.1)
Gender*			
Male	111	8.0 (± 1.6)	6.9 (± 0.2)*
Female	18	1.4 (± 0.8)	1.9 (± 0.1)
Race/ Ethnicity²³			
White, Non-Hispanic	104	5.1 (± 1.2)	5.1 (± 0.2)
Black, Non-Hispanic	**	**	2.9 (± 0.2)
American Indian, Non-Hispanic	**	**	16.1 (± 2.1)
Asian/ Pacific Islander, Non-Hispanic	**	**	3.1 (± 0.5)
Hispanic	**	**	3.3 (± 0.2)
Rural-Urban Residence²⁴			
Urban	105	4.7 (± 0.5)	-
Rural	24	5.1 (± 1)	-

Significant difference based on significance testing at $p < 0.05$

**Numbers too small to present data

Source: Washington State Department of Health Death Certificates

Disparities:

In 2005-2007, suicide deaths were 6 times higher among Washington 10-19 year old males compared to females. The numbers are too small to make comparisons by race in Washington. Nationally, youth suicide rates are highest among Non-Hispanic American Indians/ Alaska Natives and Whites.

Additional Data:

- Youth suicide is one of the **21 National Critical Health objectives** for adolescents and young adults, and is the second leading cause of death for Washington youth ages 15-19.²⁵
- Nationally, suicide attempts are significantly higher among lesbian, gay or bisexual adolescents compared to heterosexual adolescents.²⁶
- The most common youth suicide methods in Washington in 2007 were firearms (38 percent) and hanging (38 percent) while the most common methods used in nonfatal suicide-attempt hospitalizations were poisoning (83 percent) and cuts (11 percent).²⁷

²¹ Washington Death Certificate Data; Estimates generated from VISTAPHW: Years 2005-2007 combined.

²² CDC Wisqars Data Website. Available at: <http://www.cdc.gov/injury/wisqars/index.html>

²³ Because of the small numbers of suicides by race and ethnicity, youth suicide rates by race for Washington are not presented here.

²⁴ Note- Caution should be used in interpreting these due to small numbers.

²⁵ Department of Health and Human Services (US). Healthy People 2010: Understanding and Improving Health. 2nd edition. Washington, DC: US Government Printing Office; November 2000.

²⁶ Kitts R. Gay adolescents and suicide: Understanding the association. *Adolescence* 2005; 40: 621-628.

²⁷ Washington State Injury Tables, 2007. Accessed August 6, 2009 from: http://www.doh.wa.gov/hsqa/emstrauma/injury/data_tables/

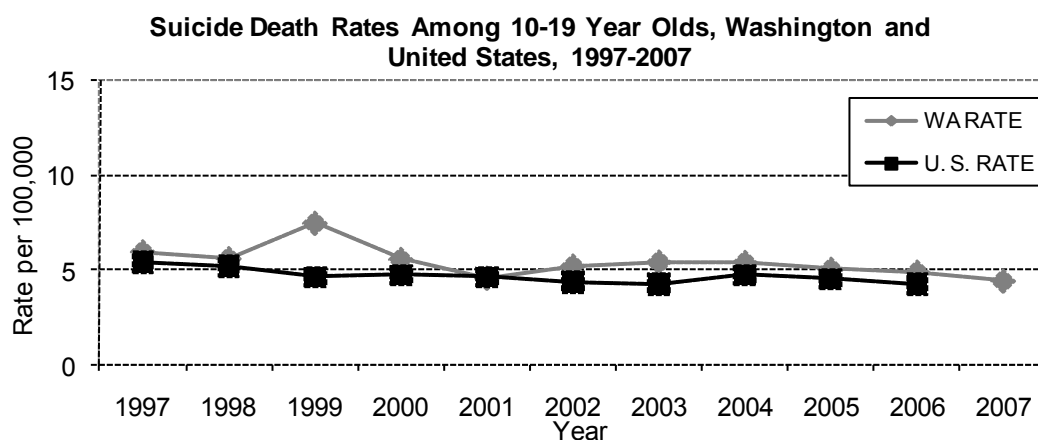
- Based on suicide deaths reviewed by Washington Child Death Review teams, about 42 percent of youth suicides occurred during after school and early evening hours and 72 percent occurred in the child’s home. About 91 percent of youth displayed at least one known warning sign and half displayed three or more.²⁸
- In 2008, among Washington 10th graders, females were more likely to have seriously considered attempting suicide (about 21 percent), made a suicide plan (about 15 percent) and to have attempted suicide at least once in the past year (about 10 percent) compared to males.²⁹

Suicide-Related Behaviors			
	Grade 8	Grade 10	Grade 12
Seriously Considered Attempting Suicide in Past Year	14% (±1)	17% (±1)	15% (±1)
Made a Suicide Plan in Past Year	11% (±1)	13% (±1)	11% (±1)
Attempted Suicide At Least Once in Past Year	8% (±1)	9% (±1)	7% (±1)
Suicide Attempt in Past Year Requiring Medical Assistance * Critical Health Objective	3 (±1)	3 (±1)	3 (±1)

*HYS 2004 data

Source: Washington Healthy Youth Survey 2008, unless otherwise noted

Sixth graders: In 2008, about 16 percent of 6th graders reported they had ever thought about killing themselves and 5 percent reported they had ever tried to commit suicide.



Source: Death Certificates and CDC WISQARS

Trends: Suicides among Washington 10-19 year olds decreased significantly from 1997-2007.

Washington Incidence: From 2005-2007, an average of 43 Washington youth 10-19 committed suicide per year for a rate of 4.8 per 100,000. In that same time period, an average of 478 Washington youth 10-19 were hospitalized each year for nonfatal suicide attempts.³⁰

United States Incidence: Nationally, the suicide rate from 2004-2006 for youth 10-19 was 4.5 per 100,000.²²

²⁸ Washington State Department of Health, Data from the Child Death Review database.

²⁹ Healthy Youth Survey 2008

³⁰ Washington State Injury Tables, 2007. Accessed August 6, 2009 from: http://www.doh.wa.gov/hsqa/emstrauma/injury/data_tables/

Interpersonal Violence

Child abuse and neglect:

- Only a portion of child abuse is reported to Child Protective Services (CPS). In 2008, there were 10,144 confirmed victims of child abuse and neglect ages 12-17 reported to Washington CPS.³¹ In 2008, 12-17 year old CPS referral rates in Washington were highest for females, Black and Multi-Race adolescents.²⁸
- In 2007, at least 50 percent of the families of victims of child abuse contained an adult with substance abuse problems.³² In 2007, 115,763 children of all ages in Washington State received preventive services, for a rate of 75.3 per 1,000.³³

Physical and Sexual Abuse:

- Females are about three times more likely than males to report a history of childhood sexual abuse. The most recent data available is from 2002, when about 18 percent of Washington women (ages 18 and over) and 6 percent of men reported a history of sexual abuse as a child. About 11 percent of women and 11 percent of men reported physical abuse as a child.³⁴
- In 2006, about 16 percent of Washington youth in the 8th grade and about 22 percent of youth in grades 10 and 12 reported being physically abused by an adult at some point in their lives. Females were more likely than males to report they had been physically abused by an adult.³⁵
- Homeless youth: In a 2002 study of 372 homeless youth in King County, about half of the youth (ages 12-21) reported a history of physical abuse and almost a third reported sexual abuse before they were on their own. Sexual abuse was more common among females, and sexual minority youth reported higher rates of physical and sexual abuse. Parents were cited as the primary source of physical abuse and non family members were cited as the primary source of sexual abuse.³⁶

Dating Violence:

- Adolescents who experience dating violence are at increased risk for injury and more likely to engage in risky sexual behavior, unhealthy dieting behaviors, substance use, and suicidal ideation or attempts.³⁷
- In 2008, an estimated 10 percent of Washington high school students reported a boyfriend or girlfriend had ever limited their activities, threatened or made them feel unsafe. About 10 percent said their boyfriend or girlfriend had caused physical injuries, such as bruises, cuts, black eyes or broken bones in the past year. Males were more likely to report being injured than females.³⁸
- In 2008, among 10th graders, Hispanic and Black students were more likely to report their boyfriend or girlfriend had physically injured them in the past year compared to Non-

³¹ Data provided by Lee Doran, Washington Department of Social and Health Services Children's Administration

³² Washington State 2007 Juvenile Justice Report, Section 9: Child Abuse. Accessed July 30, 2009 from: <http://www.dshs.wa.gov/pdf/OJJ/DataAnalysis-9-ChildAbuse.pdf>

³³ U.S. Department of Health & Human Services Administration of Children and Families. *Child Maltreatment 2007*. Accessed July 20, 2009 from: <http://www.acf.hhs.gov/programs/cb/pubs/cm07/index.htm>

³⁴ Behavioral Risk Factor Surveillance System (BRFSS), Washington State Department of Health, 2002.

³⁵ Washington Healthy Youth Survey 2006

³⁶ Tyler KA et al. Child Abuse and Negl. 2002 Dec;26 (12):1261-74

³⁷ Centers for Disease Control and Prevention. Physical dating violence among high school students—United States, 2003. *MMWR* 2006;55: 532-535. Accessed August 2009 from: <http://www.cdc.gov/mmwr/PDF/wk/mm5519>

³⁸ Washington Healthy Youth Survey 2008, Synthetic High School Estimate

Hispanic White students. Youth with disabilities and youth making lower grades (mostly Cs, Ds and Fs) were more likely to report being physically injured by a boyfriend or girlfriend in the past year.³⁹

Interpersonal Injury Related Behaviors By Grade			
	Grade 8	Grade 10	Grade 12
Boyfriend or girlfriend ever limited activities, threatened or made you feel unsafe in past year	7% (±1)	11% (±1)	12% (±2)
Had any injuries such as bruises, cuts, black eyes, or broken bones as a result of being hurt by a boyfriend or girlfriend in the past year	10% (± 1)	11% (± 1)	9% (± 1)

Source: WA Healthy Youth Survey 2008

Rape:

- Nationally, in 2007 about 8 percent of students in grades 9-12 reported they had ever been physically forced to have sexual intercourse when they did not want to. The prevalence of having been forced to have sexual intercourse was higher among female (11 percent) than male (5 percent) students, and highest among black females (13 percent).⁴⁰
- In 2008, about 8 percent of Oregon 11th graders reported they had been forced to have sexual intercourse when they did not want to. Females (11 percent) were more likely to report this than males (4 percent).⁴¹ Washington State data are not available for this question.
- In 2008 there were 2,578 forcible rape charges in Washington State, and 782 arrests. Of those arrests, 204 (26 percent) occurred among 10-19 year olds.⁴² Most instances of rape are never reported to authorities or prosecuted.

Prostitution:

- Among those arrested for prostitution in Washington in 2008, 24 percent (55) of females and 1 percent (7) of males were under age 18.⁴³ Since 2000, the majority of statewide arrests for youth prostitution have occurred within King County. Youth prostitution arrests in Washington have declined with increased awareness that youth prostitutes are often victims of sexual exploitation, rather than offenders.⁴⁴
- The City of Seattle identified 238 youth 18 years and younger involved in prostitution in 2007, 84 percent of whom were female, 14 percent of whom were male and 2 percent of whom were transgender. This is a likely underestimate of total youth involvement in prostitution. There are currently an estimated 300-500 youth ages 18 and under involved in prostitution throughout Seattle and greater King County. Most female youth involved in prostitution in King County are estimated to have begun their involvement at age 13.⁴²

³⁹ Healthy Youth Survey 2008

⁴⁰ Youth Risk Behavioral Surveillance- 2007, MMWR, May 21, 2004/ Vol 53/ No SS-2. Accessed July 2009 from: <http://www.cdc.gov/mmwr/preview/mmwrhtml/ss5704a1.htm>

⁴¹ Violence Related Behaviors. Oregon Healthy Teens 2008—11th grade: State Summary Results. Accessed July 22, 2009 from: <http://www.dhs.state.or.us/dhs/ph/chs/youthsurvey/ohteens/2008/11/violence11.pdf>

⁴² Washington Association of Sheriffs and Police Chiefs. The Crime in Washington State: 2008 Annual Report

⁴³ Crime in Washington, 2008 annual report from WASPC. Accessed at: <http://www.waspc.org/index.php?c=Crime%20Statistics>

⁴⁴ Boyer, D. and City of Seattle Human Services Department, Domestic Violence and Sexual Assault Prevention Division. Who Pays the Price? Assessment of Youth Involvement in Prostitution in Seattle. June 2008. Accessed July 30, 2009 from: http://www.seattle.gov/humanservices/domesticviolence/Report_YouthInProstitution.pdf

Homicide *Critical Health Objective*

Table 34. Youth Homicide Ages 10-19, WA (2005-2007) and US (2004-2006)⁴⁵			
Characteristic	WA Number	WA Rate per 100,000 (± margin of error)	U.S. Rate per 100,000⁴⁶ (± margin of error)
Age			
Ages 10-14	7	0.5 (±0.6)	1.1 (± 0.1)
Ages 15-19	58	4.2 (±1.2)	10 (± 0.2)
Ages 10-19	65	2.4 (±0.7)	5.6 (± 0.1)
Gender*			
Male	47	3.4 (±1.1)	9.1 (±0.2)
Female	18	1.4 (±0.8)	1.8 (± 0.1)
Race/Ethnicity ⁴⁷			
White, Non-Hispanic	29	1.4 (±0.6)	1.6 (± 0.1)
Black, Non-Hispanic	8	**	19 (± 0.6)
American Indian, Non-Hispanic	**	**	6.5 (± 1.4)
Asian/Pacific Islander, Non-Hispanic	10	**	3.1 (± 0.5)
Hispanic	15	5.3 (±3.1)	8.0 (± 0.4)

* Significant difference based on significance testing at $p < 0.05$

Source: Washington State Death Certificates

**numbers too small to present rates

Disparities:

In 2005-2007, for Washington 10-19 year olds, homicides were twice as likely among males. Nationally, youth homicide rates are highest among Non-Hispanic Black and Hispanic youths. Washington race and Hispanic comparisons are not available for these years due to small numbers.

Additional Data:

- Youth homicide is one of the **21 National Critical Health objectives** for adolescents and young adults.
- In 2007, homicide was the 3rd leading cause of death for Washington youth ages 5-14 and the 4th leading cause of death for Washington youth ages 15-19.⁴⁸
- National research indicates a strong link between exposure to violent television program content in childhood to violent behavior in children and later in life as adults. Multiple studies also link playing violent video games to physical aggression in adolescents.⁴⁹

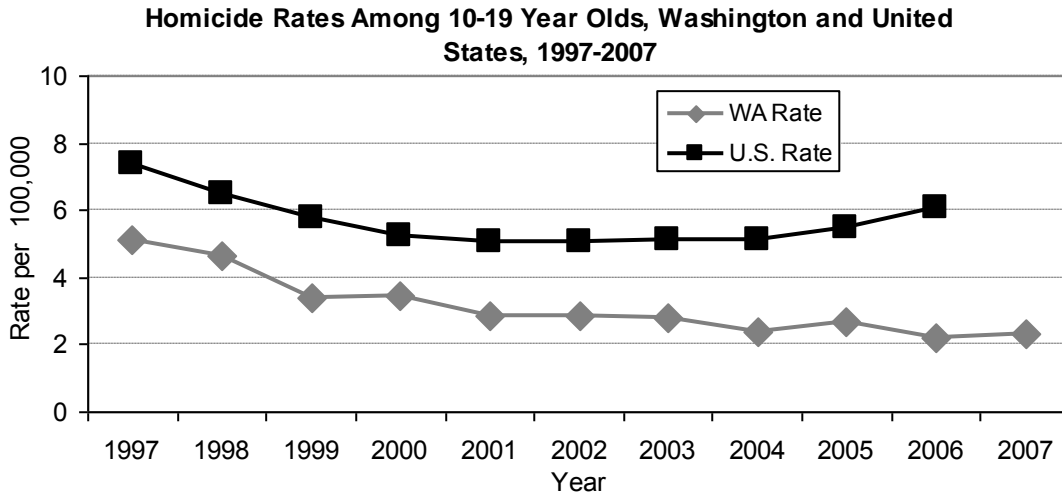
⁴⁵ Washington Death Certificate Data; Estimates generated from VISTAPHW: Years 2005-2007 combined. EPE Unit, Public Health - Seattle & King County, June 2003.

⁴⁶ CDC Wisqars Data Website. Accessed August 2009 from: <http://www.cdc.gov/injury/wisqars/index.html>

⁴⁷ Because of the small numbers of homicides by race and ethnicity, rates by race for Washington are not presented here

⁴⁸ Washington State Department of Health. Death Certificate data Accessed November 2009 at: <http://www.doh.wa.gov/ehsphl/chs/chs-data/death/htmltables/c3.htm>

⁴⁹ Brown B, Marin P. Adolescents and electronic media: Growing up plugged in. Child Trends Research Brief, May 2009. Publication #2009-29. Accessed August 2009 from: http://www.childtrends.org/Files/Child_Trends-2009_05_26_RB_AdolElecMedia.pdf



Source: Death Certificates

Trends: Homicides among Washington youth ages 10-19 significantly decreased from 1997-2007.

Washington Incidence: From 2005-2007, an average of 22 Washington youth ages 10-19 were murdered per year for a total rate of 2.4 per 100,000.⁵⁰

United States Incidence: Nationally, the homicide rate from 2004-2006 for youth ages 10-19 was 6.1 per 100,000.⁵¹

⁵⁰ Washington Death Certificate Data; Estimates generated from VISTAPhW: Years 2005-2007 combined. EPE Unit, Public Health - Seattle & King County, June 2003.

⁵¹ CDC Wisqars Data Website. Accessed August 2009 from: <http://www.cdc.gov/injury/wisqars/index.html>

Bullying

Percent Bullied in Past 30 Days	
	WA % (\pm margin of error)
Grade	
Grade 6	30% (\pm 1.4)
Grade 8	29% (\pm 1.6)
Grade 10	23% (\pm 1.2)
Grade 12	16% (\pm 1.4)
Gender (10th grade)	
Male	22% (\pm 1.5)
Female	23% (\pm 1.5)
Race/ Ethnicity (10th grade)	
White/ Non-Hispanic	23% (\pm 1.6)
Black/ Non-Hispanic	26% (\pm 4.0)
American Indian/ Non-Hispanic**	29% (\pm 4.0)
Asian/ Non-Hispanic	21% (\pm 5.9)
Hawaiian, Pacific Islander/ Non-Hispanic	27% (\pm 6.6)
Hispanic	20% (\pm 2.8)
Disability Status (10th grade)*	
Disability	35% (\pm 3.1)
No disability	19% (\pm 1.7)
Rural- Urban Residence (10th grade)	
Urban	23% (\pm 1.2)
Rural	25% (\pm 2.6)
Socioeconomic Status (10th grade)	
Lower	22% (\pm 1.5)
Higher	23% (\pm 1.9)

* Significant difference based on chi-square at $p < 0.05$ Source: Washington Healthy Youth Survey 2008

** Significant difference compared to non-Hispanic Whites based on significance testing with $p < 0.05$

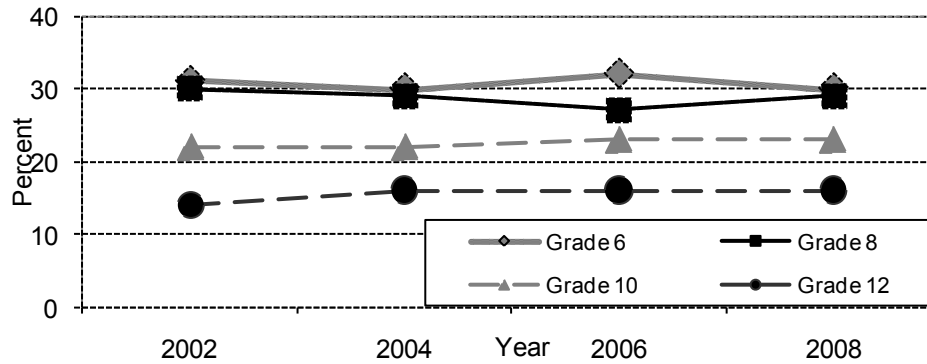
Disparities:

For Washington 10th graders in 2008, students with disabilities were significantly **more** likely to report having been bullied in the past 30 days than students without disabilities.

Additional Data:

- Bullying is defined here as a student or group of students saying or doing nasty or unpleasant things to another student; which includes teasing a student repeatedly in a way he or she does not like. This can occur when more than one student takes on a single student or when a larger or older student targets a smaller or younger student. It does not include two students of about the same strength quarreling or fighting.

Bullied in the Past 30 Days, Washington 6th, 8th, 10th and 12th Grade Students, 2002-2008



Source: Washington Healthy Youth Surveys

Changes Between 2006 and 2008: The percent of students bullied in the past 30 days did not change significantly from 2006 to 2008.

Washington Prevalence: In 2008, about 22 percent of high school students reported they were bullied in the past 30 days.^{52,53}

⁵² Synthetic high school estimate generated from Washington Healthy Youth Survey 2008 grades 8,10,and 12.

⁵³ United States incidence data not available for this question

Harassment

- In Washington in 2008, about 8 percent of 8th graders and 11 percent of 10th and 12th graders reported someone had used a computer or cell phone to bully, harass or intimidate them in the past 30 days. About 15 percent of 8th graders, 12 percent of 10th graders and 7 percent of 12th graders said they had been bullied in the past 30 days based on their perceived sexual orientation.⁵⁴ The data presented below are from Healthy Youth Survey 2006 when a full range of harassment questions were asked.

Bullying or Harassment at School or On Way To or From School in Past 30 Days			
Because of:	Grade 8	Grade 10	Grade 12
... your race, ethnicity, or national origin or what someone thought it was	15% (± 1.7)	15% (± 1)	11% (± 1.4)
... your gender, including sexual jokes, gestures, or comments that make you feel uncomfortable	20% (± 1.7)	21% (± 1.7)	19% (± 1.4)
... someone thought you were gay, lesbian or bisexual (whether you are or are not)	14% (± 1.3)	13% (± 1.5)	10% (± 1.4)
... you have a health problem or a physical or mental disability, or someone thought you did	10% (± 1.1)	10% (± 1.1)	8% (± 1)
... your religion or what someone thought it was	11% (± 1.1)	14% (± 1.3)	11% (± 1.3)
.. any other reason	27% (± 1.8)	25% (± 1.7)	18% (± 1.5)
In the past 30 days, has someone used the computer or a cell phone to bully, harass or intimidate you	10% (± 1.1)	12% (± 0.8)	11% (± 0.8)

Source: Washington Healthy Youth Survey 2006

National Harassment Data

- Nationally, in 2005, one study found that 9 percent of 10-17 year olds reported they had been a victim of online harassment at least once in the past year. The same study found that 13 percent of respondents experienced unwanted online sexual solicitations, and 4 percent had experienced aggressive solicitation, where the solicitor attempted to make contact offline.⁵⁵
- In one national survey in 2007, about 86 percent of lesbian, gay, bisexual or transgender identified middle and high school students reported being verbally harassed due to their sexual identity. About 44 percent of lesbian, gay, bisexual or transgender youth reported physical harassment due to their sexual identity, and about 22 percent reported they had been physically assaulted due to their sexual identity.⁵⁶
- In the same survey, about 89 percent of transgender identified youth ages 13-20 reported they had been verbally harassed at school due to their sexual identity and/or gender expression. About 55 percent had been physically harassed (e.g. pushed, shoved) due to their sexual identity and/or gender expression.⁵⁷

⁵⁴ Washington Healthy Youth Survey 2008

⁵⁵ Brown B, Marin P. Adolescents and electronic media: Growing up plugged in. Child Trends Research Brief, May 2009. Publication #2009-29. Accessed August 2009 from: http://www.childtrends.org/Files/Child_Trends-2009_05_26_RB_AdolElecMedia.pdf

⁵⁶ Kosciw, J. G., Diaz, E. M., and Greytak, E. A. (2008). 2007 National School Climate Survey: The experiences of lesbian, gay, bisexual and transgender youth in our nation's schools. New York: GLSEN. Accessed July 30, 2009 from: http://www.glsen.org/binary-data/GLSEN_ATTACHMENTS/file/000/001/1290-1.pdf

⁵⁷ Greytak, E. A., Kosciw, J.G., and Diaz, E. M. (2009). Harsh Realities: The Experiences of Transgender Youth in Our Nation's Schools. New York: GLSEN. Accessed July 30, 2009 from: http://www.glsen.org/binary-data/GLSEN_ATTACHMENTS/file/000/001/1375-1.pdf

Physical Fighting ***Critical Health Objective***

At Least One Physical Fight In Past 12 Months	
	WA % (± margin of error)
Grade	
Grade 6	31% (±2)
Grade 8	37% (±2)
Grade 10	32% (±2)
Grade 12	24% (±2)
Gender (10th grade)*	
Male	40% (±2)
Female	24% (±2)
Race/ Ethnicity (10th grade)	
White, Non-Hispanic	28% (±2)
Black, Non-Hispanic**	41% (±8)
American Indian, Non-Hispanic**	47% (±7)
Asian, Non-Hispanic**	23% (±4)
Hawaiian/ Pacific Islander, Non-Hispanic**	37% (±7)
Hispanic**	38% (±3)
Disability Status (10th grade)*	
Disability	44% (±4)
No disability	28% (±3)
Rural Urban Residence (10th grade)	
Urban	32% (±2)
Rural	32% (±5)
Socioeconomic Status (10th grade)*	
Lower	37% (±2)
Higher	27% (±2)

* Significant difference based on chi-square at $p < 0.05$ Source: Washington Healthy Youth Survey 2008

**Significant difference from Non-Hispanic Whites based on significance testing at $p < 0.05$

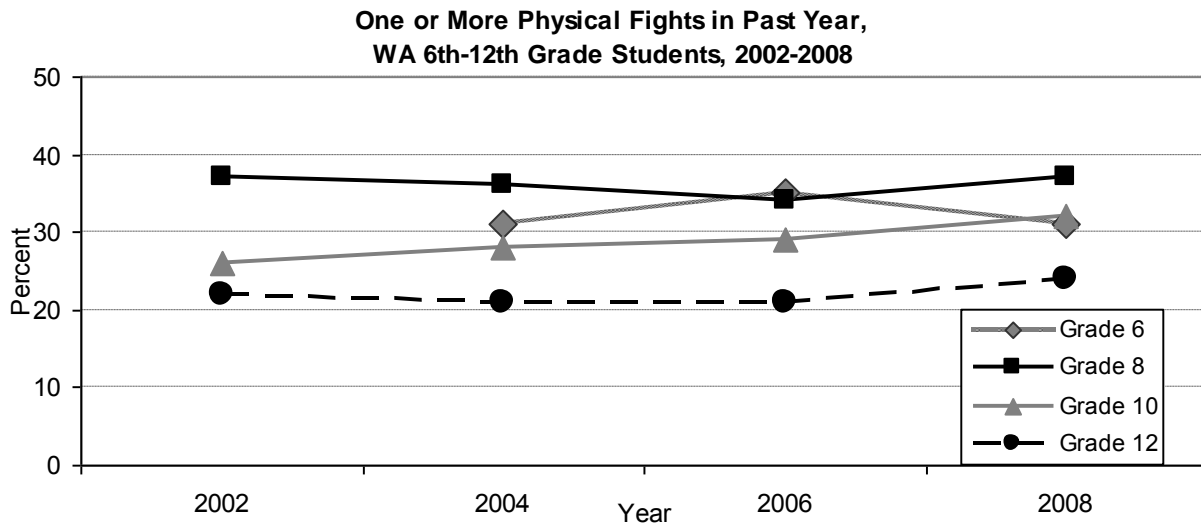
Disparities:

For Washington 10th graders in 2008, physical fights in the past year were **more** common among males, students with disabilities and students of lower socioeconomic status. All racial and ethnic groups were **more** likely to have been in a physical fight in the past year than Non-Hispanic White students, except for Non-Hispanic Asian students who were **less** likely than White students to have been in a physical fight in the past year.⁵⁸

⁵⁸ Washington State Healthy Youth Survey 2008

Additional Data:

- Reducing physical fighting among adolescents is one of the **21 National Critical Health** objectives for adolescents and young adults.
- In 2008 in Washington, about 3 percent of 6th graders, 6 percent of 8th graders, and 8 percent of 10th and 12th graders reported they carried a weapon like a gun or knife on school property in the past 30 days.⁵⁹
- Academic Achievement: About 46 percent of 10th graders who had been in a fight in the past year got lower grades (Cs, Ds and Fs) compared to 25 percent of those who had not been in a fight.³⁹



Source: Washington Healthy Youth Surveys

Changes Between 2006 and 2008: The percent of 10th graders who were in a physical fight in the past year did not change significantly from 2006 to 2008.

Washington Prevalence: In 2008, an estimated 30 percent of high school students reported that they were in at least one physical fight in the past year.⁶⁰

United States Prevalence: In 2007, about 36 percent of high school students nationally reported they had been in at least one physical fight in the past year.⁶¹

⁵⁹ Washington State Healthy Youth Survey, 2008

⁶⁰ Synthetic high school estimate generated from Washington Healthy Youth Survey 2008 grades 8, 10, and 12.

⁶¹ Youth Risk Behavioral Surveillance- 2007, MMWR, May 21, 2004/ Vol 53/ No SS-2 Accessed July 2009 from: <http://www.cdc.gov/mmwr/preview/mmwrhtml/ss5704a1.htm>

Youth Gang Involvement

Been a Gang Member in Past Year ⁶²	
	Member of a Gang in the Past Year WA % (± margin of error)
Grade	
8 th	9% (± 1)
10 th	8% (± 1)
12 th	7% (± 1)
Gender (10th grade)	
Male*	11% (± 2)
Female	5% (± 1)
Race/Ethnicity (10th grade)	
White, Non-Hispanic	6% (± 1)
Black, Non-Hispanic **	20% (± 5)
American Indian, Non-Hispanic**	15% (± 5)
Asian, Non-Hispanic	6% (± 2)
Hawaiian/Pacific Islander, Non-Hispanic	8% (± 4)
Hispanic**	12% (± 1)
Disability Status (10th grade)*	
Disability	11% (± 2)
No disability	7% (± 1)
Rural/Urban Residence (10th grade)	
Urban	8% (± 1)
Rural	7% (± 3)
Socioeconomic Status (10th grade)*	
Higher	6% (± 1)
Lower	10% (± 1)

* Significant difference based on chi-square at $p < 0.05$ Source: Washington Healthy Youth Survey 2008

**Significant difference from Non-Hispanic Whites based on significance testing at $p < 0.05$

Disparities: For Washington 10th graders in 2008, gang membership in the past year was **more** common among students with a disability, students with lower socioeconomic status, and Hispanic, and Non-Hispanic Black and American Indian students compared to Non-Hispanic White students.

Additional Data:

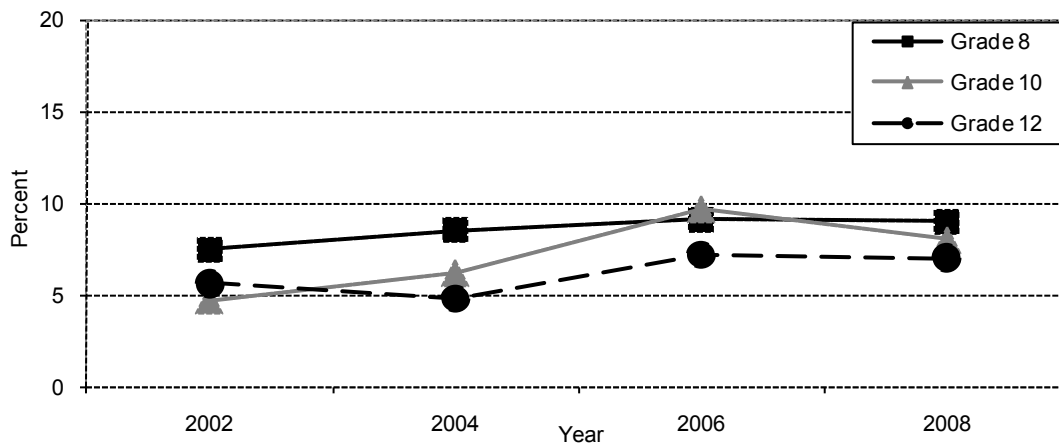
- Gang activity in Washington has increased in recent years in communities and schools. Current youth gang membership is estimated to be around 20,000 statewide, with another

⁶² Washington State Healthy Youth Survey, 2008. Based on the question "During the past 12 months, have you been a member of a gang?" Since only current students complete the Healthy Youth Survey, this is a likely underestimate of gang involvement, because many gang-affiliated youth drop out of school, become incarcerated, or die.

20,000 youth estimated to be gang “associates.” Several groups that operate like gangs but do not officially call themselves gangs have also been identified in the state.⁶³ Nationwide, gangs are migrating from urban areas to more suburban and rural areas, which may be one explanation for the recent increase in gang activity.⁶⁴

- Within the Northwest Region (Washington, Oregon, Idaho, Montana, Wyoming and Alaska), gang activity occurs predominantly in Washington and Oregon. Currently there are an estimated 2,093 gangs with more than 36,650 members of all ages within the Northwest Region. In 2008, King County reported over 3,500 gang members, the highest number in the region.⁶¹
- In 2008 in Washington State, there were 18 gang-related homicides, 8 of those were juvenile gang killings. This was the highest number of gang-related homicides in the past ten years.⁶⁵
- Nationally, gang membership has increased significantly since 2001, and was estimated to be 788,000 among all ages, including an estimated 262,667 youth under age 18, in 2007.⁶⁶
- Academic Achievement: About 53 percent of 10th graders who were in a gang in the past year reported making mostly lower grades (Cs, Ds and Fs), compared to 29 percent of 10th graders who were not in a gang.⁶⁷

**Member of a Gang in the Past Year,
WA 8th, 10th and 12th Graders, 2002-2008**



Source: Washington State Healthy Youth Surveys

Changes Between 2006 and 2008: The percent of 8th, 10th or 12th graders who reported being members of a gang in the past year did not change significantly from 2006 to 2008.

Washington Prevalence: In 2008, about 8 percent of Washington high school students reported that they were a member of a gang in the past year.^{68, 69}

⁶³ Information from Tyson Vogeler, Program Supervisor, Washington State School Safety Center

⁶⁴ National Gang Intelligence Center, Federal Bureau of Investigations. National Gang Threat Assessment 2009. Accessed July 31, 2009 from <http://www.fbi.gov/publications/ngta2009.pdf>

⁶⁵ Washington Association of Sheriffs and Police Chiefs. The Crime in Washington State: 2008 Annual Report <http://www.waspc.org/index.php?c=Crime%20Statistics>

⁶⁶ National Youth Gang Center (2009). *National Youth Gang Survey Analysis*. Retrieved August 5, 2009 from <http://www.iir.com/nygc/nygsa/>

⁶⁷ Washington State Healthy Youth Survey 2008

⁶⁸ Synthetic high school estimate generated from Washington Healthy Youth Survey 2008 grades 8,10,and 12.

⁶⁹ United States incidence not available for this question

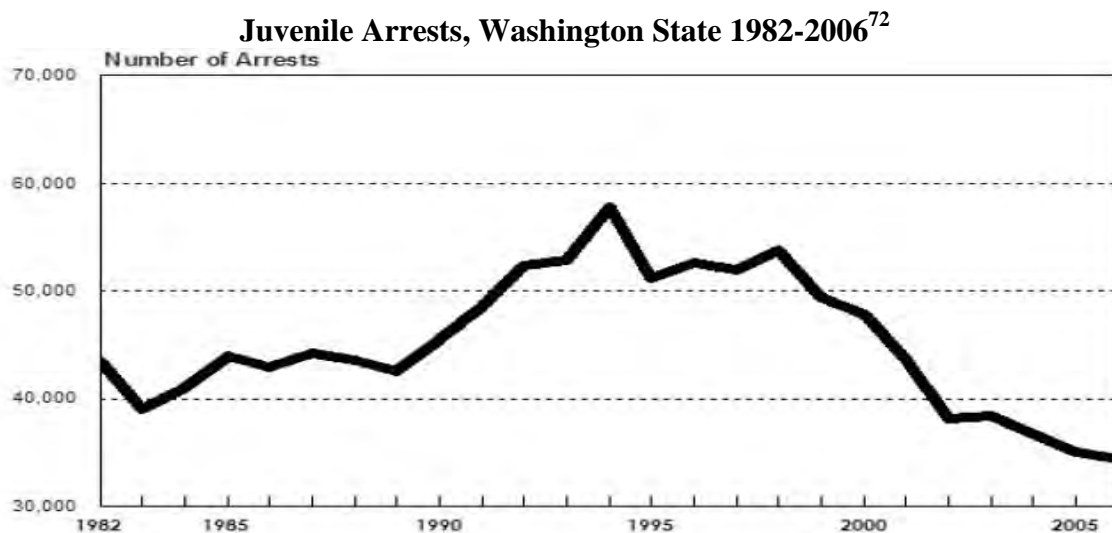
Crime Offender Data ⁷⁰

Juvenile arrests ⁷¹

- In 2008 in Washington, there were 35,394 juvenile arrests, for an arrest rate of 49.4 per 1,000 youth age 10-17, and 24,167 arrests among 18-19 year old adolescents, for an arrest rate of 127.4 per 1,000 youth ages 18-19. Juvenile arrests have been decreasing since 1997.
- Violent Crime: In 2008, about 4 percent of juvenile arrests (1,522) were for violent crimes.
- About 30 percent of the 2008 arrests were for property crimes, 22 percent for drugs and alcohol, and less than 1 percent of the arrests were for sex offenses.
- Females accounted for about 32 percent of all 2008 juvenile arrests, compared to 26 percent of all arrests in 1997. Youth of color accounted for about 16 percent of all 2008 juvenile arrests. The percent of Black youth and American Indian youth arrested in Washington has increased since 2002.

Juvenile Court Offense Referrals and Results

- In 2004, the most recent year from which data are available, there were 54,856 juvenile court offense referrals, representing a 31 percent decrease since 1995. About 38 percent were referred to diversion, 38 percent had charges filed, and no action was taken on 20 percent. ⁶³
- In 2008, the average monthly Juvenile Institutional Rehabilitation population in Washington was 779, the lowest number since 1990. ⁶¹ In 2004, less than 6 percent of cases where a youth was found to be guilty were sentenced to Juvenile Rehabilitation. ⁶³
- Court referrals were more common for males, as females were more likely to be referred to diversion. Court referrals for youth of color have increased 22 percent since 2000. ⁶³



⁷⁰ Washington State Office of Financial Management, Washington Trends. Available at: <http://www.ofm.wa.gov/trends/index.htm>

⁷¹ Washington Association of Sheriffs and Police Chiefs. Crime in Washington State: 2008 Annual Report Available at <http://www.waspc.org/index.php?c=Crime%20Statistics>

⁷² Washington State Governor's Juvenile Justice Advisory Committee, 2007 Annual Report. Accessed August 2009 from: <http://www.dshs.wa.gov/ojj/annualRPT.shtml>