

Rule Making at the State Board of Health

The state Board of Health adopts rules according to its statutory authority and consistent with the state's Administrative Procedures Act for many of the programs and operations both within our state's public health system and within the community at large.

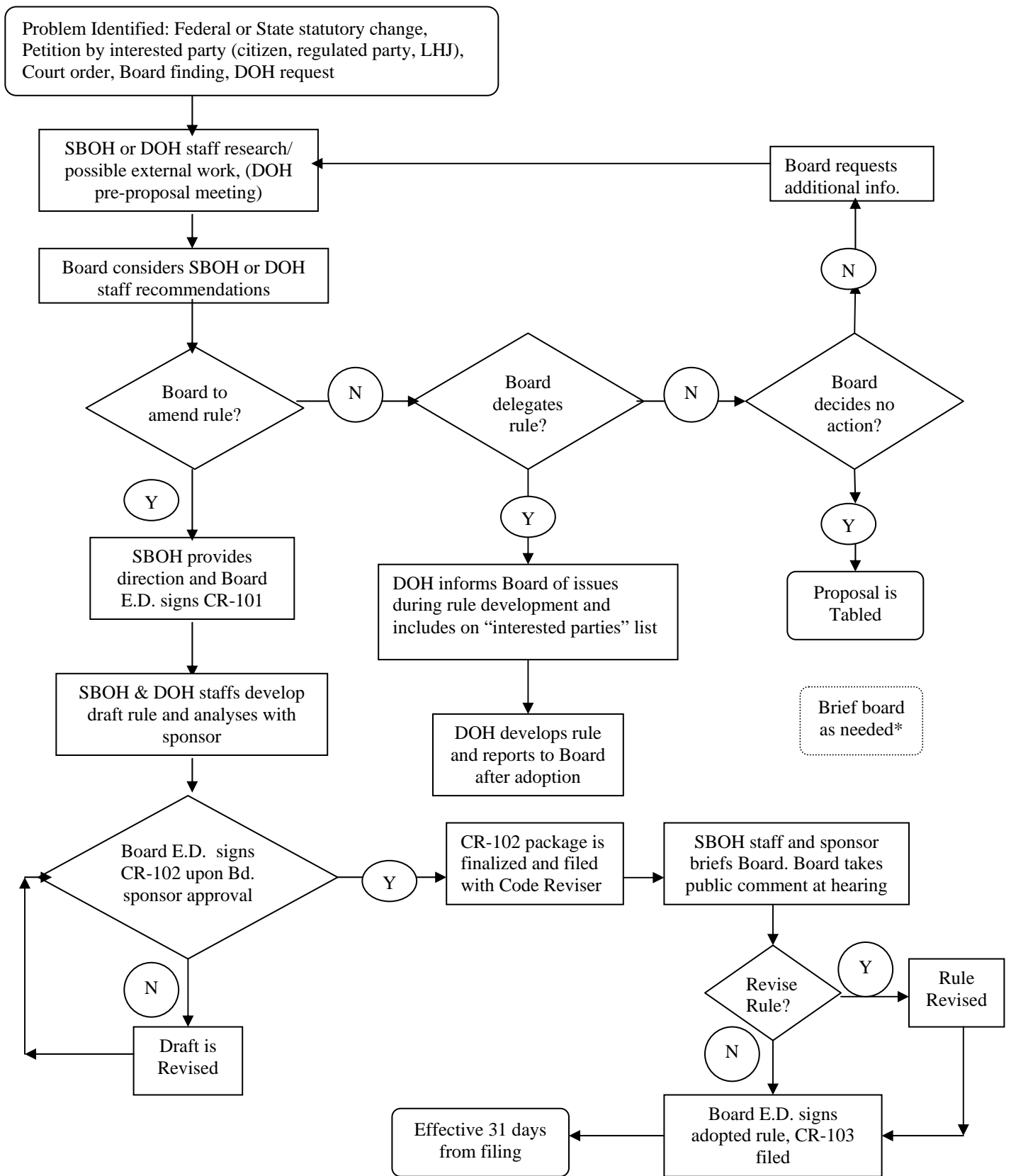
These rules govern many operations at the state Department of Health and within local health jurisdictions. Some Board rules also govern certain practices among private health care providers, health facilities, schools, day care centers, and some businesses such as restaurants and hotels. Board rules govern important aspects of our state's public health efforts in immunization, safe drinking water, sewage disposal, control of infectious and non-infectious diseases, and in assuring safe and healthful conditions in our environment with special emphasis on schools, eating establishments, and recreation sites.

For a complete listing and summary of the Board's rule making authority please refer to the Summary of Board Authority under this section on our website.

The flow chart on the following page outlines the roles and processes under which the Board normally works with the state Department of Health to develop and approve these rules.

If you have any questions about this process, please contact Craig McLaughlin at (360) 236-4106 or by e-mail at craig.mclaughlin@doh.wa.gov.

State Board of Health Rules Process



* The board should be briefed on emerging issues or as requested by the board staff or sponsor assigned to the rule.

Approved by SBOH 12/99