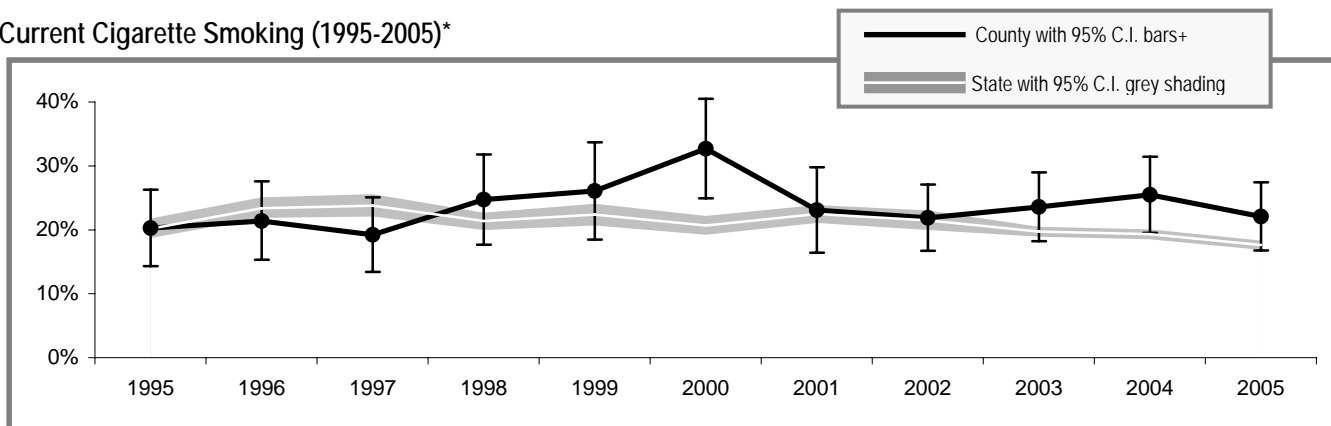


Cowlitz County

Cowlitz County

Adult Tobacco Use

Current Cigarette Smoking (1995-2005)*



* Smoking prevalence trend is based on English language surveys only. (Spanish language surveys began in 2003.)
 + County prevalence is a 3-year rolling average through 2002; starting in 2003 smoking prevalence is based on single-year data.

Current Smoking (2005)**

	<u>All adults</u>
Cowlitz County	23.4% (± 6.1%)
Washington State	17.5% (± 0.7%)

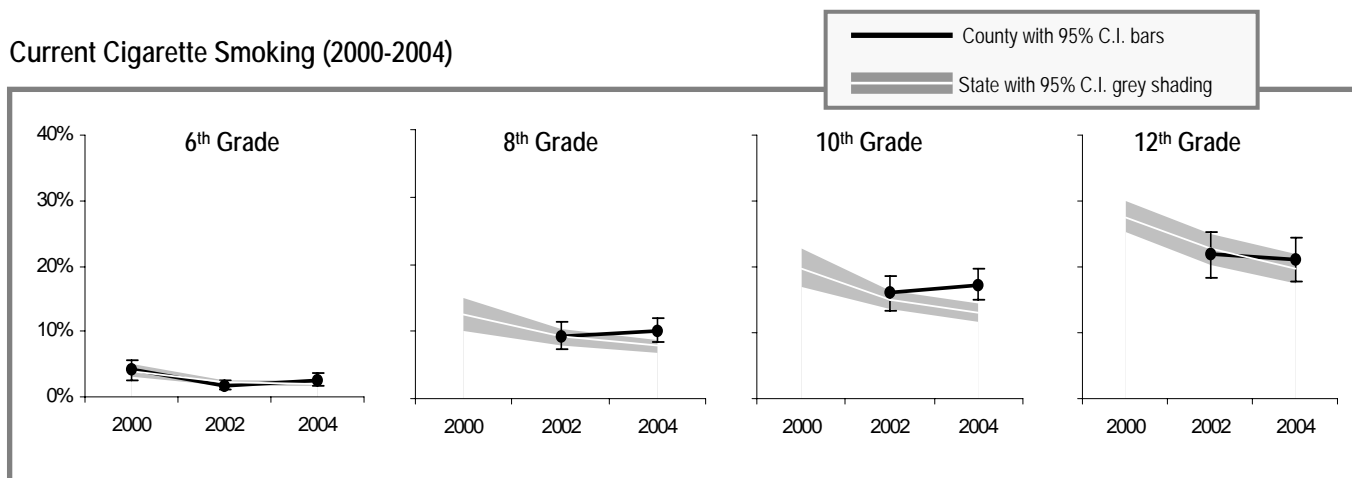
Current Smokeless Tobacco Use (2003-2005)**

	<u>All adults</u>	<u>Males only</u>
Cowlitz County	4.3% (± 2.2%)	9.1% (± 4.5%)
Washington State	3.0% (± 0.3%)	5.8% (± 0.6%)

** Current smoking and smokeless prevalence include both English and Spanish language surveys.

Youth Tobacco Use

Current Cigarette Smoking (2000-2004)



Current Smoking (2004)

	<u>All 10th Graders</u>
Cowlitz County	17.3% (± 2.4%)
Region**	15.2% (± 1.0%)
Washington State	13.0% (± 1.4%)

Current Smokeless Tobacco Use (2004)

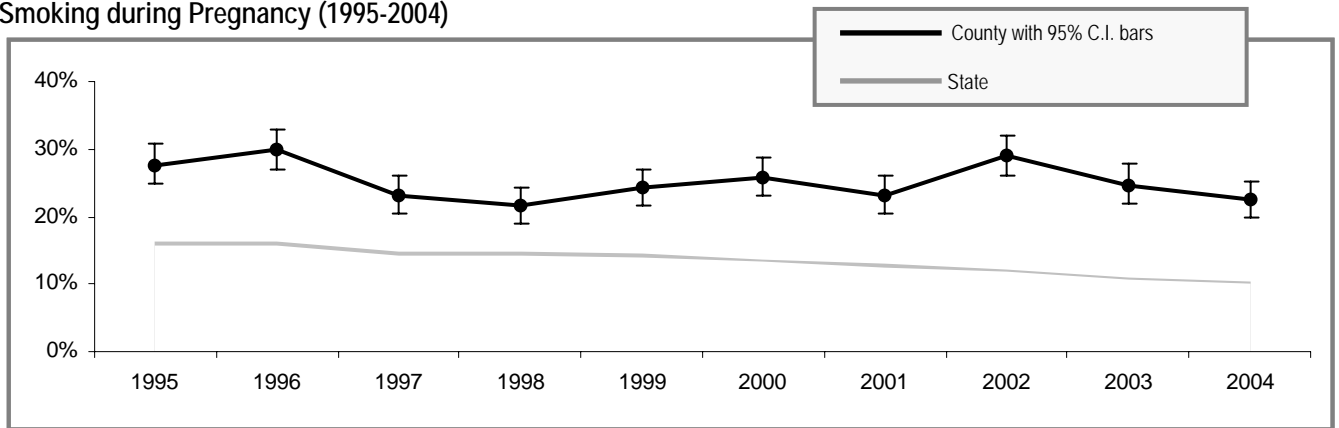
	<u>All 10th Graders</u>	<u>10th Grade Males only</u>
Cowlitz County	10.5% (± 2.0%)	18.2% (± 3.5%)
Region**	3.9% (± 0.2%)	9.7% (± 1.2%)
Washington State	4.9% (± 0.6%)	8.0% (± 1.2%)

** Region includes school districts in Clark, Cowlitz, Klickitat, Pacific Skamania, and Wahkiakum counties.

DATA SOURCES: ADULT TOBACCO USE – WA. DEPT OF HEALTH, BEHAVIORAL RISK FACTOR SURVEILLANCE SYSTEM (BRFSS); YOUTH TOBACCO USE – WA STATE HEALTHY YOUTH SURVEY (HYS); POPULATION ESTIMATES – OFFICE OF FINANCIAL MGMT(OFM), YEAR 2000 CENSUS; MATERNAL SMOKING DURING PREGNANCY – WA BIRTH CERT SYSTEM; TOBACCO-RELATED CANCER – WA STATE CANCER REGISTRY; ESTIMATED TOTAL DEATHS – WA DEATH CERT SYSTEM.

Tobacco Use by Pregnant Women

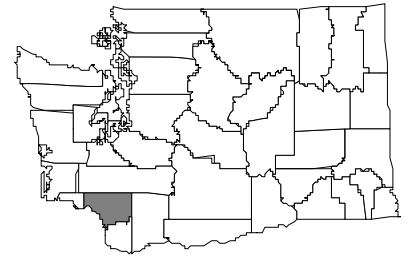
Smoking during Pregnancy (1995-2004)



People Affected in Cowlitz County

2000 population: 92,948

- 15,900 adults smoke
- 2,900 adults use smokeless tobacco
- 300 infants are born annually to mothers who smoke during pregnancy
- 1,200 youth smoke
- 600 youth use smokeless tobacco
- 17,000 adults are exposed to secondhand smoke
- 3,700 youth are exposed to secondhand smoke
- 100 cancers diagnosed each year are smoking-related
- 200 adults die annually from smoking-related causes



Community Indicators for Cowlitz County

- All restaurants and bars are now completely smokefree
- 81% of households have a ban on smoking (95% C.I. \pm 4%)
- 14% of retailers sold tobacco products to minors
- 44% of 10th graders say tobacco is "hard to get" (95% C.I. \pm 4%)
- 3 tobacco industry sampling event occurred in the past year – 13 samples were distributed
- 482 people called the Quit line in the past year
- 58% of smokers tried to quit in the past year (95% C.I. \pm 8%)
- 59% of tobacco users who had a healthcare visit in the past year were advised to quit by a healthcare professional (95% C.I. \pm 10%)
- 32% of tobacco users did not have a healthcare visit in the past year (95% C.I. \pm 10%)
- 24% of smokers who have health insurance say that their insurance covers help in quitting smoking, such as counseling or nicotine patches (95% C.I. \pm 9%)
- 40% of smokers with health insurance do not know if it covers help in quitting smoking (95% C.I. \pm 10%)

Priorities for Tobacco Prevention and Control

- Preventing Youth from Initiating Tobacco Use
- Increasing Tobacco Cessation
- Eliminating Exposure to Secondhand Smoke
- Identifying and Eliminating Tobacco-Related Disparities in High Risk Groups

Local Contact Information:

Shannon Gourley
phone: (360) 501-1228
email: GourleyS@co.cowlitz.wa.us

Cowlitz County Health Department

1952 9th Avenue

Longview, WA 98362

website: http://www.co.cowlitz.wa.us/health/HealthEducation/tobacco_home.htm