



WASHINGTON STATE HIV SURVEILLANCE REPORT 4th QUARTER 2008

Office of Infectious Disease and Reproductive Health Assessment Unit (360) 236-3455 www.doh.wa.gov/cfh/hiv.htm

What's in this report?

HIV in Washington state: an overview.....	1
Developments:	
Revised surveillance case definition for HIV infection among adults and adolescents.....	2
How HIV/AIDS surveillance works.....	3
Definitions.....	4
Disease statistics.....	4
Acknowledgements and contact information.....	10

Publication Schedule: This report reflects events occurring through December 31, 2007 and reported by December 31, 2008, unless otherwise stated. Quarterly reports are published four times a year.

To receive a copy of this report, send an email request to: HIV_surv@doh.wa.gov

HIV IN WASHINGTON STATE: AN OVERVIEW

- In Washington state, the first case of acquired immune deficiency syndrome (AIDS) was diagnosed in 1982.
- Since the beginning of the epidemic, over 16,700 people have been diagnosed with HIV infection in Washington.
- In recent years, HIV incidence has been stable. During 2002-2006, new HIV diagnoses averaged 561 per year.
- Since highly active antiretroviral therapy (HAART) became widely available in 1996, both AIDS diagnoses and AIDS deaths have declined significantly.
- The total number of people living with HIV or AIDS in Washington state increases about 5% each year.

Figure 1. Average HIV rates by county, 2002-2006

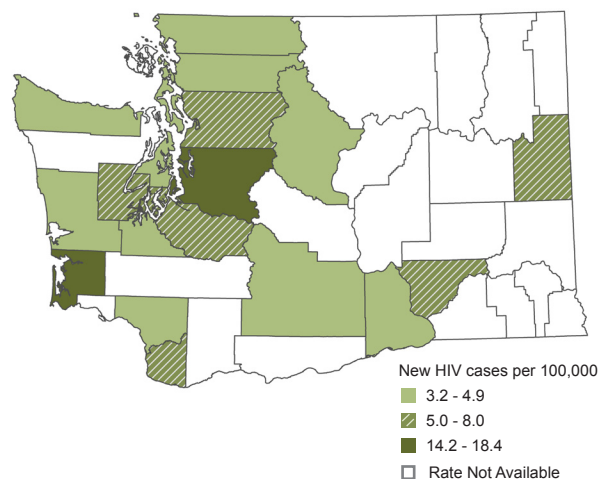


Figure 2. New HIV diagnoses, AIDS diagnoses, and deaths from AIDS in Washington state, 1997-2006

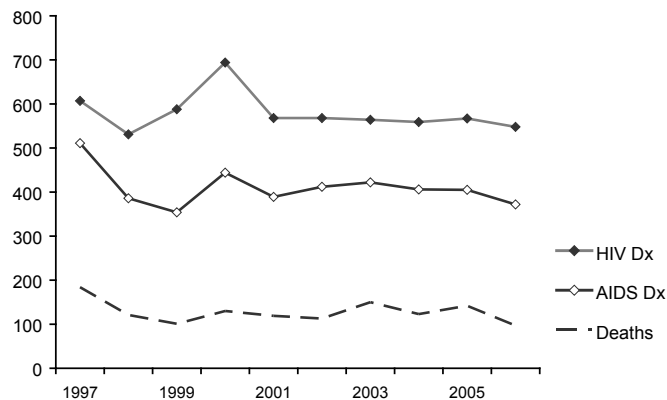
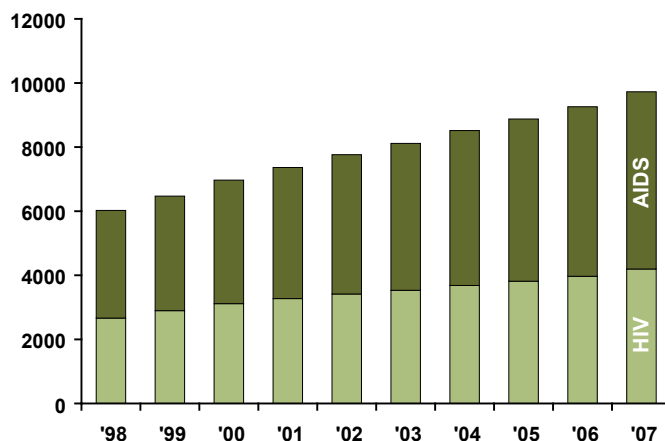


Figure 3. Prevalence of HIV and AIDS in Washington state, 1998-2007



DEVELOPMENTS

Revised Surveillance Case Definition for HIV Infection Among Adults and Adolescents

In December, the U.S. Centers for Disease Control and Prevention (CDC) published revised case definitions for HIV infection in adults, adolescents, and children in the *Morbidity and Mortality Weekly (MMWR, December 5, 2008/57(RR10):1-8)*. For adults and adolescents, the HIV classification system and the surveillance case definitions for HIV and AIDS were revised and combined into a single case definition, and these changes are the focus of this update.

Over time, tracking of HIV disease has evolved with the development of diagnostic technologies and treatment of disease. When the first case of AIDS was diagnosed in 1981, the antibody test for HIV was not yet available and case finding and reporting was dependent on diagnosis of characteristic infections and malignant diseases. The HIV test was introduced in 1984, and since then the case definitions for both HIV infection and AIDS have undergone several revisions that reflect diagnostic and therapeutic advances.

Even with these changes, the case definition for AIDS continued to include a subset of adults and adolescents

without laboratory-confirmed evidence of HIV infection whose illness still met the surveillance definition for AIDS, based primarily on the presence of AIDS-defining clinical conditions. The revised case definition for HIV, which includes AIDS, has been streamlined and has less emphasis on clinical conditions while retaining the 26 AIDS-defining conditions. The new definition requires that all individuals reported with HIV, including those with AIDS who have one of the AIDS-defining clinical conditions, have laboratory confirmation of HIV infection.

Additionally, the role of CD4+ T-lymphocyte counts and percentages has been clarified. Three CD4+ T-lymphocyte count categories have been renamed for HIV infection, with increasing severity from stage 1 through stage 3 (AIDS; see table below). An unknown stage is also included for cases reported without this information. Once cases are classified into a surveillance severity stage, they cannot be reclassified into a less severe stage. Surveillance staff are encouraged to gather information about CD4+ T-lymphocyte count (or percentage) or on the presence of AIDS-defining conditions at the time diagnosis.

For more information , go to: http://www.cdc.gov/mmwr/preview/mmwrhtml/rr5710a1.htm?s_cid=rr5710a1_e

Table. Surveillance case definition for HIV infection among adults and adolescents (aged 13 years or older at HIV diagnosis) - United States, 2008

Stage	Laboratory evidence*	Clinical evidence
Stage 1	Laboratory confirmation of HIV infection <i>and</i> CD4+ T-lymphocyte count of ≥ 500 cells/ μ L <i>or</i> CD4+ T-lymphocyte percentage of $\geq 29\%$	None required (but no AIDS-defining condition)
Stage 2	Laboratory confirmation of HIV infection <i>and</i> CD4+ T-lymphocyte count of 200-499 cells/ μ L <i>or</i> CD4+ T-lymphocyte percentage of 14% - 28%	None required (but no AIDS-defining condition)
Stage 3 (AIDS)	Laboratory confirmation of HIV infection <i>and</i> CD4+ T-lymphocyte count of < 200 cells/ μ L <i>or</i> CD4+ T-lymphocyte percentage of $< 14\%$ †	<i>or</i> documentation of an AIDS-defining condition (with laboratory confirmation of HIV infection) †
Stage Unknown §	Laboratory confirmation of HIV infection <i>and</i> no information on CD4+ T-lymphocyte count or percentage	<i>and</i> no information of presence of AIDS-defining conditions

* The CD4+ T lymphocyte percentage is the percentage of total lymphocytes. If the CD4+ T-lymphocyte count and percentage do not correspond to the same HIV infection stage, select the more severe stage.

† Documentation of an AIDS-defining condition supersedes a CD4+ T-lymphocyte count of ≥ 200 cells/ μ L and a CD4+ T-lymphocyte percentage of total lymphocytes of $\geq 14\%$. Definitive diagnosis methods for these conditions are available in Appendix C of the 1993 revised HIV classification system and the expanded AIDS case definition (CDC. 1993 Revised classification system for HIV infection and expanded surveillance case definition for AIDS among adolescents and adults. *MMWR* 1992; 41[No. RR-17]) and from the National Notifiable Diseases Surveillance System (available at <http://www.cdc.gov/ncphi/diss/nndss/phs/infdis2009.htm>).

§ Although cases with no information on CD4+ T-lymphocyte count or percentage or on the presence of AIDS-defining conditions can be classified as stage unknown, every effort should be made to report CD4+ T-lymphocyte counts or percentages and the presence of AIDS-defining conditions at the time of diagnosis. Additional CD4+ T-lymphocyte counts or percentages and any identified AIDS-defining conditions can be reported as recommended. (Council of State and Territorial Epidemiologists. Laboratory reporting of clinical test results indicative of HIV infection: new standards for a new era of surveillance and prevention [Position Statement 04-ID-07]; 2004. Available at <http://cste.org/ps/2004pdf/04-ID-07-final.pdf>).

HOW HIV/AIDS SURVEILLANCE WORKS IN WASHINGTON STATE

Health care providers and facilities, laboratories and local health departments are required by law to report HIV- and AIDS-related information to local health departments or the State Department of Health according to the requirements listed below. Identifying and reporting on new cases of HIV infection allows for the reduction of the spread of the virus; it assures that newly infected persons receive care as early as possible, and that partners who have been exposed to HIV receive partner counseling and referral services. State and federal funding for HIV/AIDS disease control and care of infected persons is based on case numbers, which means that our state receives resources to slow the spread of the virus and to pay for needed HIV/AIDS care services when HIV/AIDS surveillance is complete, accurate and timely. Copies of the case report form can be found at the Department of Health website: <http://www.doh.wa.gov/notify/forms/>.

For federal funding purposes, all states and territories count HIV/AIDS cases in the same manner: an individual gets counted as an HIV case in the county in which he/she is residing at the time of his/her initial HIV diagnosis (not including a diagnosis made from an anonymous test). Once that person progresses to AIDS, he/she will then get counted as an AIDS case in the county

in which he/she is residing at the time of his/her AIDS diagnosis and will no longer be counted as an HIV case. This means that a county's HIV case count can actually go down over time if their HIV cases progress to AIDS in other counties. Additionally, states are continually working with each other to ensure that individuals are counted in only one state, so the case count for any individual county in Washington State could go down if we learn from another state that an individual from the county had an earlier diagnosis in the other state.

For epidemiologic and community planning purposes, it is often helpful to evaluate all cases of HIV and AIDS as being a part of one combined group: people who have been diagnosed with HIV disease. Hence, for most of this report, the assignment of newly diagnosed (or incident) HIV cases (including concurrent diagnoses of HIV and AIDS) to a specific geographic region is based on residence of the patient at the time of his/her initial HIV diagnosis. The assignment of prevalent cases to a specific geographic region is based on residence of the patient at the time of his/her most recent HIV or AIDS diagnosis.

HIV/AIDS Reporting Requirements:

REPORTING	ITEM TO REPORT	TIMELINE	TO WHOM
Health care providers	HIV or AIDS diagnosis	3 working days	Local health department
Health care facilities	HIV or AIDS diagnosis	3 working days	HIV to local health department AIDS to state health department
Laboratories	Positive Western blot	2 working days	State health department (PHSKC inside King County)
Laboratories	All CD4 count results (absolute and %); All HIV viral load results	Monthly	State health department (PHSKC inside King County)
Local health departments	HIV and AIDS	Within 7 days of completion or 21 days of notification	State health department

DEFINITIONS

Case: A reported instance of HIV infection or AIDS in which the individual who received a confidential HIV or AIDS diagnosis resided in Washington state at the time of diagnosis. HIV cases do not include individuals with a current HIV diagnosis who were originally reported with HIV in another U.S. state or territory. AIDS cases include all individuals who resided in Washington state at the time of AIDS diagnosis, regardless of where an earlier HIV diagnosis might have taken place. For surveillance purposes, HIV+ individuals who have not been tested or whose only test for HIV infection was performed anonymously are not considered 'cases'.

Confidence interval (CI): A range of values for a measure that is believed to contain the true value at a specified level of statistical certainty (e.g., 95%). On the bar charts in this report, vertical lines with short horizontal lines at either end represent the 95% confidence interval for the point estimate represented by the bar.

Cumulative HIV/AIDS diagnoses: The number of cases of a disease reported or diagnosed in a specified time, regardless of current vital status. Cumulative cases include those who have already died.

Disease rate: A standardized proportion often used to represent the actual risk for disease within a given population. A rate is usually calculated by dividing the number of cases (disease frequency) by the number of persons at risk for the disease (population estimate). Usually, the general population, rather than the population potentially exposed to HIV infection by various high-risk behaviors, is used as the denominator since the latter is unknown. In this report, all rates are reported as cases per 100,000 residents.

Exposure category: Cases of HIV disease are counted only once in a hierarchy of modes of transmission. Persons with more than one reported mode of transmission are classified in the transmission mode first in the hierarchy. The exception is men who have sex with men and inject drugs, which has its own

category. Persons whose mode of transmission is classified as high-risk heterosexual contact are persons who report heterosexual contact with a person with, or at increased risk for, HIV infection (e.g., an injection drug user). Undetermined risk (No Identified Risk, or NIR) represents persons for whom transmission history is incomplete.

HIV diagnosis date: The earliest date (month and year) associated with a verifiable report of HIV infection. Verifiable reports include positive antibody tests, detectable viral loads, positive antigens or cultures, or physician diagnoses, but not self-reported diagnosis dates, positive lab results from anonymous testing, or diagnosis dates from other states that remain unverified.

Incidence: The number of new cases of a disease that occur in a population during a certain time period, usually a year. For the purposes of HIV surveillance, "HIV incidence" refers to the number of newly diagnosed cases of HIV.

Late HIV diagnosis: Refers to anyone who is diagnosed with AIDS within 12 months of their initial HIV diagnosis. In this report, at least 50 cases must exist in order for a late HIV diagnosis statistic to be reported.

New HIV diagnosis: Refers to anyone who is diagnosed with HIV in a given time period, regardless of disease status.

Prevalence: The total number of persons with a specific disease or condition at a given time. HIV prevalence data are generally presented as "persons living with HIV disease."

Reporting delay: The time interval between the date a case is diagnosed and the date the case is reported to the health department. Reporting delays can result in recent surveillance data being less complete. However, in Washington, most new HIV cases (>95%) are reported within six months of diagnosis.

DISEASE STATISTICS

Figure 4. HIV Rates by Year of HIV Diagnosis, Washington State, 1998-2006

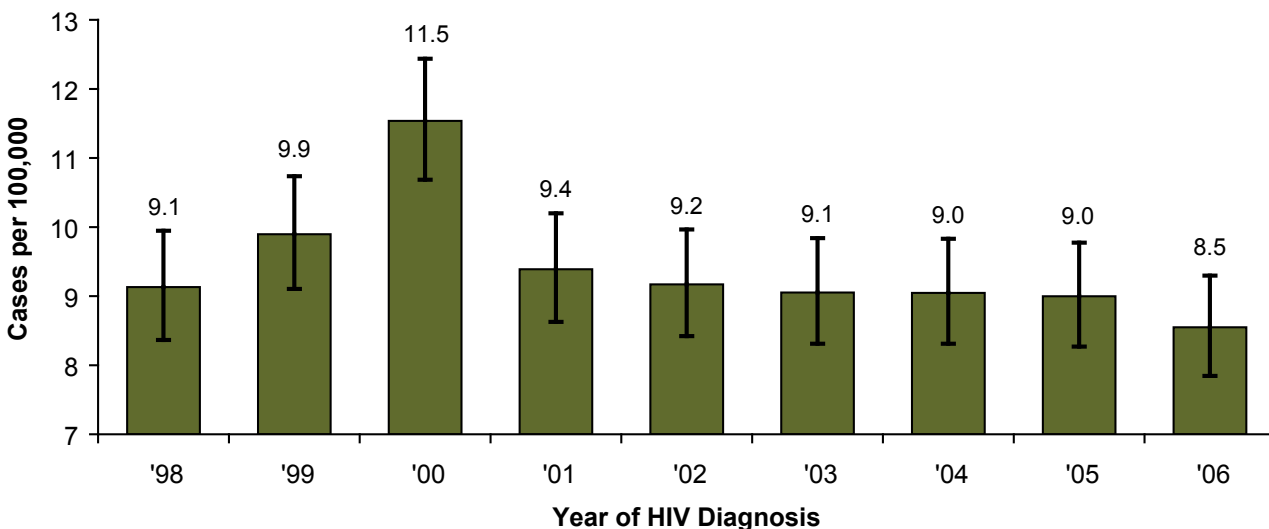


Table 1. HIV Diagnoses

Year of HIV diagnosis:	Newly Diagnosed Cases of HIV Disease						Late HIV Diagnoses		2002-2006	
	2002 No.	2003 No.	2004 No.	2005 No.	2006 No.	2007 No.	2002-2006 No.	%	Rate	%
Total	568	564	559	567	548	614	2,806	100%	9.0	32%
Gender										
Male	481	476	468	486	463	512	2,374	85%	15.2	32%
Female	87	88	91	81	85	102	432	15%	2.7	32%
Age at HIV Diagnosis										
< 20	6	7	4	7	10	23	34	1%	0.4	---
20 - 29	131	112	132	122	141	161	638	23%	14.9	18%
30 - 39	235	232	187	203	176	180	1,033	37%	22.9	32%
40 - 49	138	152	174	164	146	155	774	28%	15.6	37%
50 - 59	43	46	55	56	60	70	260	9%	6.4	45%
60+	15	15	7	15	15	25	67	2%	1.4	55%
Race and Hispanic Origin										
White, non-Hispanic	356	359	348	349	354	364	1,766	63%	7.1	29%
Black, non-Hispanic	113	102	100	107	83	120	505	18%	44.0	36%
Hispanic (All Races)	57	65	61	72	66	91	321	11%	12.2	38%
Asian	21	15	19	20	26	24	114	4%	5.5	45%
Hawaiian/Pacific Islander	4	4	1	3	5	3	20	---	---	---
Amer. Indian /Alaska Native	12	14	16	9	6	6	57	2%	12.1	39%
Multi-race / Unknown	9	5	14	7	8	6	43	2%	---	---
Exposure category										
Male/Male Sex (MSM)	325	334	312	297	311	342	1,579	56%	---	28%
Injecting Drug Use (IDU)	58	44	52	43	41	31	238	8%	---	35%
MSM and IDU	52	37	39	53	38	44	219	8%	---	19%
HR Heterosexual Contact	83	79	68	68	56	48	354	13%	---	40%
Pediatric	0	1	1	0	2	2	4	0%	---	---
Transfusion / hemophiliac	1	1	5	5	0	1	12	0%	---	---
No Identified Risk/ Other	49	68	82	101	100	146	400	14%	---	47%

Figure 5. New HIV Diagnoses by Gender and Age at Diagnosis, Washington State, 2002-2006

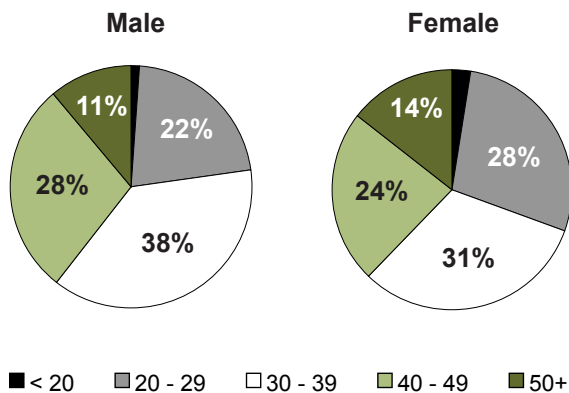


Figure 6. New HIV Diagnosis Rates by Race/Ethnicity and Gender, Washington State, 2002-2006

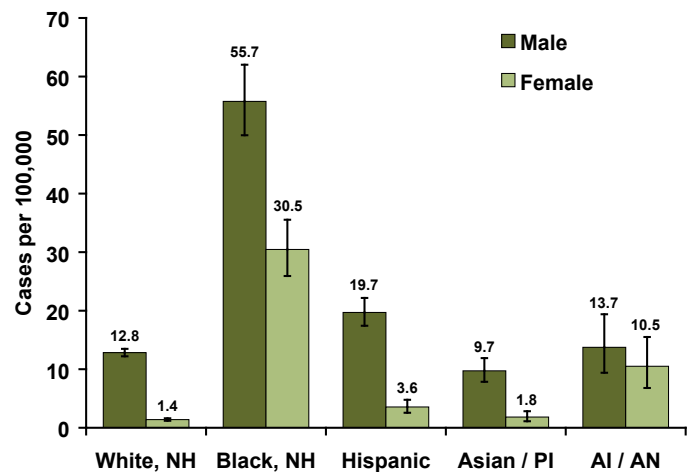


Table 2. People Living with HIV Disease as of December 31, 2007

	HIV (not AIDS)			AIDS			All Cases of HIV Disease		
	No.	%	Rate	No.	%	Rate	No.	%	Rate
Total	4,196	100%	64.7	5,529	100%	85.2	9,725	100%	149.9
Gender									
Male	3,567	85%	110.3	4,843	88%	149.7	8,410	86%	260.0
Female	629	15%	19.3	686	12%	21.1	1,315	14%	40.4
Current age									
< 20	52	1%	3.0	22	0%	1.2	74	1%	4.2
20 - 29	500	12%	54.4	185	3%	20.1	685	7%	74.5
30 - 39	1,218	29%	138.1	1,110	20%	125.9	2,328	24%	264.0
40 - 49	1,558	37%	159.7	2,405	43%	246.5	3,963	41%	406.1
50 - 59	684	16%	76.4	1,384	25%	154.5	2,068	21%	230.9
60+	184	4%	17.3	423	8%	39.8	607	6%	57.1
Race and Hispanic Origin									
White, non-Hispanic	2,965	71%	57.2	3,832	69%	73.9	6,797	70%	131.1
Black, non-Hispanic	626	15%	265.2	805	15%	341.0	1,431	15%	606.3
Hispanic (All Races)	378	9%	70.2	581	11%	107.8	959	10%	178.0
Asian / Pacific Islander	122	3%	28.3	161	3%	37.4	283	3%	65.8
Amer. Indian /Alaska Native	59	1%	60.2	104	2%	106.0	163	2%	166.2
Multi-race / Unknown	46	1%	---	46	1%	---	92	1%	---
Exposure category									
Male/Male Sex (MSM)	2,676	64%	---	3,340	60%	---	6,016	62%	---
Injecting Drug Use (IDU)	303	7%	---	503	9%	---	806	8%	---
MSM and IDU	310	7%	---	507	9%	---	817	8%	---
HR Heterosexual Contact	431	10%	---	593	11%	---	1,024	11%	---
Pediatric	34	1%	---	15	0%	---	49	1%	---
Transfusion / hemophiliac	21	1%	---	58	1%	---	79	1%	---
No Identified Risk/ Other	421	10%	---	513	9%	---	934	10%	---

Figure 7. HIV Prevalence Rates by Race/Ethnicity and Gender, Washington State, End of 2007

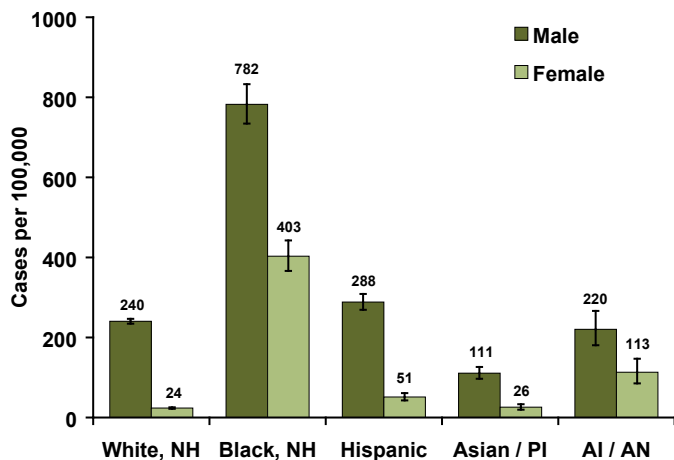
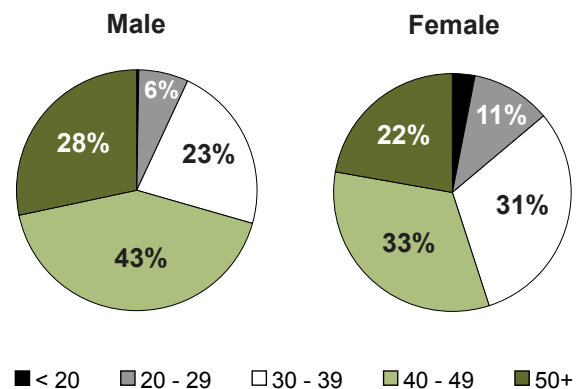


Figure 8. People Living with HIV Disease by Gender and Current Age, Washington State, End of 2007



**Table 3. People Living with HIV Disease as of December 31, 2007:
Exposure Category by Gender and Race/Ethnicity**

Exposure category	NH White		NH Black		Hispanic		Asian / Pacific Islander		American Indian/Alaska Native	
	No.	%	No.	%	No.	%	No.	%	No.	%
Males:										
Male/Male Sex (MSM)	4,724	76%	474	48%	548	66%	162	72%	55	51%
Injecting Drug Use (IDU)	340	6%	106	11%	63	8%	7	3%	15	14%
MSM and IDU	656	11%	60	6%	55	7%	6	3%	25	23%
HR Heterosexual Contact	129	2%	153	15%	55	7%	13	6%	7	7%
Pediatric	7	0%	9	1%	2	0%	2	1%	1	1%
Transfusion / hemophiliac	43	1%	3	0%	7	1%	1	0%	0	0%
No Identified Risk/ Other	279	5%	184	19%	100	12%	33	15%	4	4%
Total Males*	6,178	100%	989	100%	830	100%	224	100%	107	100%
Females:										
Injecting Drug Use (IDU)	165	27%	61	14%	13	10%	4	7%	26	46%
HR Heterosexual Contact	322	52%	206	47%	82	64%	30	51%	21	38%
Pediatric	10	2%	11	2%	5	4%	2	3%	0	0%
Transfusion / hemophiliac	7	1%	12	3%	3	2%	3	5%	0	0%
No Identified Risk/ Other	115	19%	152	34%	26	20%	20	34%	9	16%
Total Females*	619	100%	442	100%	129	100%	59	100%	56	100%

* 66 cases (57 male) were reported as belonging to more than one racial/ethnic group; race/ethnicity remains unknown for 26 cases (25 male)

Figure 9. People Living with HIV Disease by AIDSNet Region and Race/Ethnicity Washington State, End of 2007

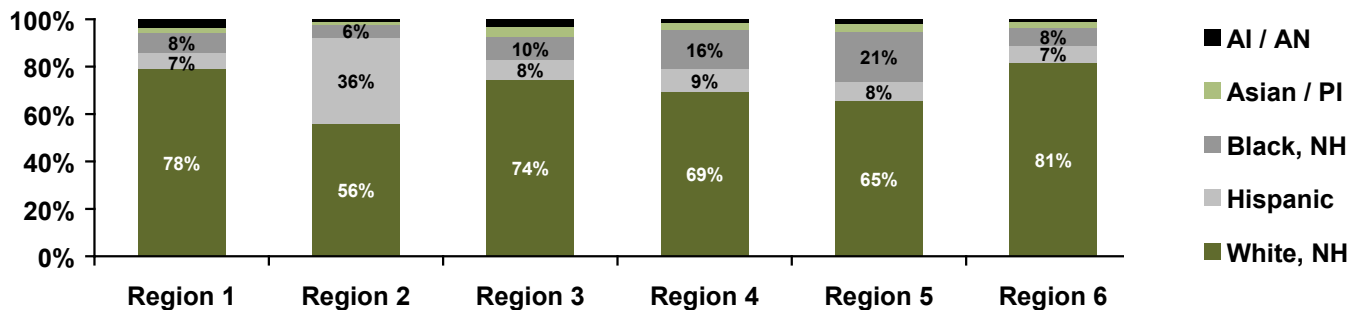


Figure 10. People Living with HIV Disease by AIDSNet Region and Exposure Category Washington State, End of 2007

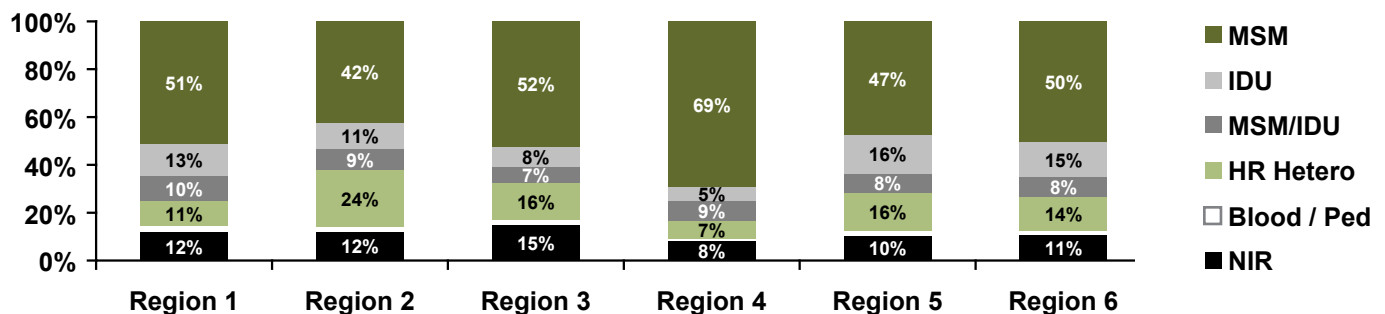


Table 4. HIV Diagnoses by AIDSNet Region and County

Year of HIV diagnosis:	Newly Diagnosed Cases of HIV Disease							Cumulative HIV Diagnoses			
	2002 No.	2003 No.	2004 No.	2005 No.	2006 No.	2007 No.	2002-2006 No. %	Rate	No.	%	
AIDSNet Region 1	29	28	36	27	30	41	150	5%	4.6	888	5%
Adams Co.	1	0	0	0	0	0	1	0%	---	6	0%
Asotin Co.	2	0	2	1	1	0	6	0%	---	20	0%
Columbia Co.	0	1	0	0	0	2	1	0%	---	7	0%
Ferry Co.	0	0	0	0	0	1	0	0%	---	8	0%
Garfield Co.	0	0	0	0	0	0	0	0%	---	1	0%
Lincoln Co.	0	0	1	0	0	0	1	0%	---	4	0%
Okanogan Co.	0	1	5	0	0	1	6	0%	---	34	0%
Pend Oreille Co.	0	0	0	0	1	0	1	0%	---	9	0%
Spokane Co.	22	23	27	22	25	37	119	4%	5.4	692	4%
Stevens Co.	2	2	1	1	1	0	7	0%	---	27	0%
Walla Walla Co.	1	1	0	1	1	0	4	0%	---	62	0%
Whitman Co.	1	0	0	2	1	0	4	0%	---	18	0%
AIDSNet Region 2	25	22	21	27	30	30	125	4%	3.8	581	3%
Benton Co.	8	2	0	2	8	5	20	1%	3.2	115	1%
Chelan Co.	2	2	3	5	4	3	16	1%	4.7	65	0%
Douglas Co.	0	0	0	0	0	2	0	0%	---	6	0%
Franklin Co.	5	5	5	6	2	3	23	1%	8.0	71	0%
Grant Co.	1	2	4	1	3	3	11	0%	---	46	0%
Kittitas Co.	1	1	1	3	3	0	9	0%	---	25	0%
Klickitat Co.	2	2	0	0	2	1	6	0%	---	16	0%
Yakima Co.	6	8	8	10	8	13	40	1%	3.5	237	1%
AIDSNet Region 3	41	49	54	66	58	62	268	10%	5.3	1,372	8%
Island Co.	3	6	2	0	2	2	13	0%	4.3	77	0%
San Juan Co.	0	0	1	0	1	1	2	0%	---	26	0%
Skagit Co.	2	4	6	6	5	3	23	1%	4.0	94	1%
Snohomish Co.	29	33	38	53	42	46	195	7%	6.0	956	6%
Whatcom Co.	7	6	7	7	8	10	35	1%	3.8	219	1%
AIDSNet Region 4 (King Co.)	361	358	342	321	309	328	1,691	60%	18.4	10,636	64%
AIDSNet Region 5	55	60	51	70	72	76	308	11%	6.4	1,796	11%
Kitsap Co.	9	10	10	9	13	9	51	2%	4.3	302	2%
Pierce Co.	46	50	41	61	59	67	257	9%	6.8	1,494	9%
AIDSNet Region 6	57	47	55	56	49	77	264	9%	5.5	1,425	9%
Clallam Co.	3	2	2	4	1	1	12	0%	3.6	74	0%
Clark Co.	32	25	25	27	20	43	129	5%	6.6	635	4%
Cowlitz Co.	7	3	4	2	6	5	22	1%	4.6	137	1%
Grays Harbor Co.	3	2	4	6	2	2	17	1%	4.9	81	0%
Jefferson Co.	0	0	1	0	3	1	4	0%	---	37	0%
Lewis Co.	0	1	1	0	4	1	6	0%	---	57	0%
Mason Co.	4	5	2	4	1	7	16	1%	6.3	101	1%
Pacific Co.	4	3	0	3	3	2	13	0%	14.2	31	0%
Skamania Co.	0	0	0	0	0	0	0	0%	---	7	0%
Thurston Co.	4	6	16	10	9	15	45	2%	4.0	262	2%
Wahkiakum Co.	0	0	0	0	0	0	0	0%	---	3	0%
STATEWIDE TOTAL	568	564	559	567	548	614	2,806	100%	9.0	16,698	100%

Table 5. People Living with HIV Disease by AIDSNet Region and County as of December 31, 2007

	HIV (not AIDS)			AIDS			All Cases of HIV Disease		
	No.	%	Rate	No.	%	Rate	No.	%	Rate
AIDSNet Region 1	188	4%	26.4	298	5%	41.9	486	5%	68.4
Adams Co.	1	0%	---	4	0%	---	5	0%	---
Asotin Co.	2	0%	---	10	0%	---	12	0%	56.3
Columbia Co.	1	0%	---	2	0%	---	3	0%	---
Ferry Co.	0	0%	---	1	0%	---	1	0%	---
Garfield Co.	1	0%	---	0	0%	---	1	0%	---
Lincoln Co.	0	0%	---	2	0%	---	2	0%	---
Okanogan Co.	7	0%	---	17	0%	42.7	24	0%	60.3
Pend Oreille Co.	0	0%	---	3	0%	---	3	0%	---
Spokane Co.	161	4%	35.7	219	4%	48.5	380	4%	84.2
Stevens Co.	6	0%	---	5	0%	---	11	0%	---
Walla Walla Co.	6	0%	---	24	0%	41.2	30	0%	51.5
Whitman Co.	3	0%	---	11	0%	---	14	0%	32.8
AIDSNet Region 2	145	3%	20.3	233	4%	32.7	378	4%	53.0
Benton Co.	31	1%	19.0	52	1%	31.9	83	1%	51.0
Chelan Co.	17	0%	23.9	20	0%	28.1	37	0%	52.0
Douglas Co.	2	0%	---	1	0%	---	3	0%	---
Franklin Co.	21	1%	31.2	31	1%	46.0	52	1%	77.2
Grant Co.	9	0%	---	17	0%	20.6	26	0%	31.5
Kittitas Co.	4	0%	---	10	0%	---	14	0%	36.6
Klickitat Co.	7	0%	---	3	0%	---	10	0%	---
Yakima Co.	54	1%	23.1	99	2%	42.3	153	2%	65.3
AIDSNet Region 3	337	8%	31.1	505	9%	46.6	842	9%	77.7
Island Co.	15	0%	19.1	28	1%	35.7	43	0%	54.8
San Juan Co.	6	0%	---	7	0%	---	13	0%	81.8
Skagit Co.	23	1%	19.9	29	1%	25.2	52	1%	45.1
Snohomish Co.	238	6%	34.7	365	7%	53.2	603	6%	87.9
Whatcom Co.	55	1%	29.2	76	1%	40.4	131	1%	69.6
AIDSNet Region 4 (King Co.)	2684	64%	144.2	3424	62%	184.0	6,108	63%	328.2
AIDSNet Region 5	473	11%	45.7	562	10%	54.3	1,035	11%	100.0
Kitsap Co.	73	2%	29.8	104	2%	42.5	177	2%	72.3
Pierce Co.	400	10%	50.6	458	8%	57.9	858	9%	108.5
AIDSNet Region 6	369	9%	34.1	507	9%	46.8	876	9%	80.8
Clallam Co.	19	0%	27.7	22	0%	32.1	41	0%	59.9
Clark Co.	182	4%	43.9	216	4%	52.0	398	4%	95.9
Cowlitz Co.	39	1%	39.9	42	1%	42.9	81	1%	82.8
Grays Harbor Co.	15	0%	21.2	29	1%	41.0	44	0%	62.1
Jefferson Co.	11	0%	---	9	0%	---	20	0%	69.9
Lewis Co.	7	0%	---	17	0%	22.9	24	0%	32.4
Mason Co.	24	1%	44.0	54	1%	98.9	78	1%	142.9
Pacific Co.	11	0%	---	7	0%	---	18	0%	83.3
Skamania Co.	0	0%	---	2	0%	---	2	0%	---
Thurston Co.	60	1%	25.2	107	2%	45.0	167	2%	70.2
Wahkiakum Co.	1	0%	---	2	0%	---	3	0%	---
STATEWIDE TOTAL	4,196	100%	64.7	5,529	100%	85.2	9,725	100%	149.9

Table 6. AIDS Diagnoses and Deaths Attributed to HIV Disease

Year of HIV diagnosis:	Recent AIDS Diagnoses 2002-2006			Cumulative AIDS Diagnoses 1982-2007		Cumulative HIV Deaths 1982-2007	
	No.	%	Rate	No.	%	No.	%
Total	2,017	100%	6.5	12,099	100%	5,302	100%
Gender							
Male	1,701	84%	11.0	10,972	91%	4,963	94%
Female	316	16%	2.0	1,127	9%	339	6%
Age at AIDS diagnosis						Age at death	
< 20	11	1%	---	87	1%	57	1%
20 - 29	241	12%	5.7	1,998	17%	476	9%
30 - 39	776	38%	17.5	5,389	45%	2,194	41%
40 - 49	681	34%	13.9	3,288	27%	1,732	33%
50 - 59	244	12%	6.0	1,021	8%	638	12%
60+	64	3%	1.3	316	3%	205	4%
Race and Hispanic Origin							
White, non-Hispanic	1,287	64%	5.2	9,190	76%	4,369	82%
Black, non-Hispanic	351	17%	30.9	1,426	12%	470	9%
Hispanic (All Races)	218	11%	8.4	924	8%	262	5%
Asian / Pacific Islander	88	4%	4.3	263	2%	83	2%
Amer. Indian /Alaska Native	49	2%	10.4	224	2%	94	2%
Multi-race / Unknown	24	1%	---	72	1%	24	0%
Exposure category							
Male/Male Sex (MSM)	1,061	53%	---	7,874	65%	3,732	70%
Injecting Drug Use (IDU)	219	11%	---	1,103	9%	453	9%
MSM and IDU	193	10%	---	1,215	10%	563	11%
HR Heterosexual Contact	269	13%	---	877	7%	214	4%
Pediatric	1	0%	---	31	0%	14	0%
Transfusion / hemophiliac	12	1%	---	219	2%	124	2%
No Identified Risk/ Other	262	13%	---	780	6%	202	4%

ACKNOWLEDGEMENTS AND CONTACT INFORMATION

Our thanks to the medical providers who care for people with HIV/AIDS, to our local health jurisdiction partners, and to state and regional public health laboratories - all of whom work diligently to ensure the timely and complete reporting of cases. These data are used to support the allocation of HIV prevention and care resources, to conduct program planning and evaluation, and to educate a broad range of individuals about the HIV epidemic in Washington.

For more information, please contact:

**Washington State Department of Health
Infectious Disease and Reproductive Health Assessment Unit
P.O. Box 47838, Olympia, WA 98504-7838
Phone: 360-236-3455
Email: HIV_surv@doh.wa.gov**