



# WASHINGTON STATE HIV SURVEILLANCE REPORT 1st QUARTER 2008

Office of Infectious Disease and Reproductive Health Assessment Unit (360) 236-3455 www.doh.wa.gov/cfh/hiv

## What's in this report?

HIV in Washington State: An Overview..... 1

Developments:

- Federal HIV Prevention Plan Extended..... 2
- New Statewide HIV Prevalence Estimates ..... 2

How HIV/AIDS surveillance works..... 3

Definitions..... 4

Disease statistics..... 4

Acknowledgements and contact information.....10

**Publication Schedule:** This report reflects events occurring through December 31, 2007 and reported by March 31, 2008, unless otherwise stated. Quarterly reports are published four times a year.

**To receive this report via email, send a request to:**  
HIV\_surv@doh.wa.gov

### HIV IN WASHINGTON STATE: AN OVERVIEW

- In Washington State, the first case of acquired immune deficiency syndrome (AIDS) was diagnosed in 1982.
- Since the beginning of the epidemic, over 16,000 people have been diagnosed with HIV infection in Washington.
- In recent years, HIV incidence has been stable. During 2002-2006, new HIV diagnoses averaged 574 per year.
- Since highly active antiretroviral therapy (HAART) became widely available in 1996, both AIDS diagnoses and AIDS deaths have declined significantly.
- The total number of people living with HIV or AIDS in Washington State increases about 5% each year.

Figure 1. Average HIV Rates by County, 2002-2006

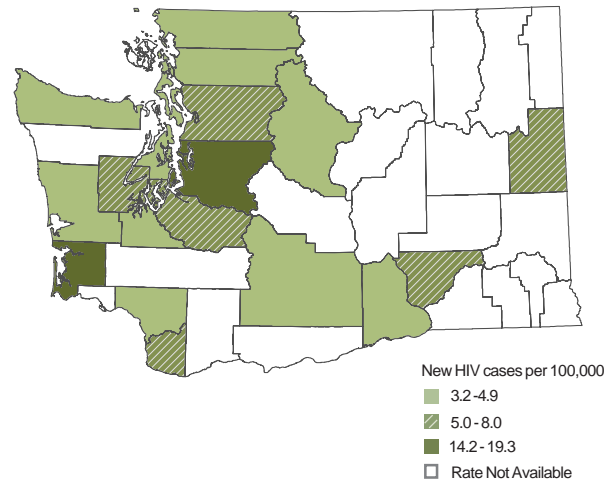


Figure 2. New HIV diagnoses, AIDS diagnoses, and deaths from AIDS in Washington State, 1997-2006

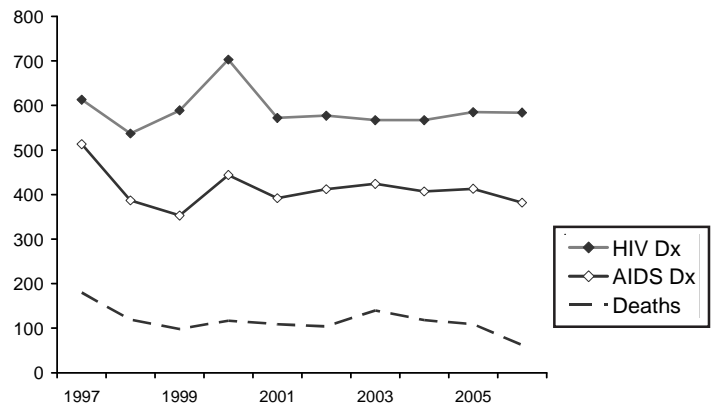
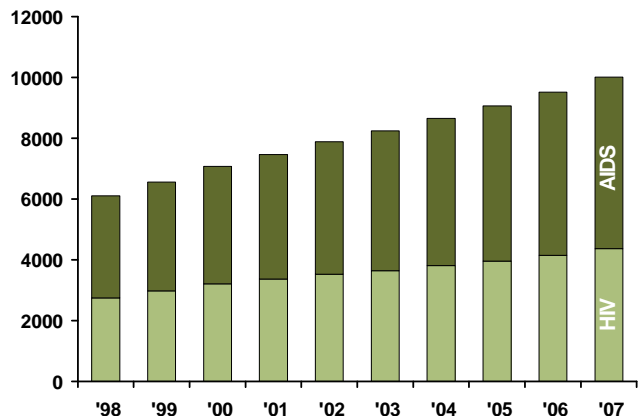


Figure 3. Prevalence of HIV and AIDS in Washington State, 1997-2006



## DEVELOPMENTS

### Federal HIV Prevention Strategic Plan Extended Through 2010

In late December 2007, the Centers for Disease Control and Prevention (CDC) extended its HIV prevention strategic plan. Entitled *HIV Prevention Strategic Plan: Extended Through 2010 (Extended Plan)*, the plan will guide CDC's HIV prevention activities. It includes an expanded set of objectives and performance indicators that make priorities more explicit and ensure that key issues are effectively addressed. Twelve new objectives have been added, 20 existing objectives have been modified. The *Extended Plan* also incorporates 17 additional performance indicators.

The *Extended Plan* includes four major milestones that maintain the focus on core prevention priorities:

**Short-Term Milestone 1:** By 2010, decrease by at least 10% the number of persons in the United States at high risk for acquiring or transmitting HIV infection by delivering targeted, sustained and evidence-based HIV prevention interventions.

**Short-term Milestone 2:** By 2010, through voluntary testing, increase from the current estimated 75% to

80% the proportion of HIV-infected people in the United States who know they are infected.

**Short-term Milestone 3:** By 2010, increase from the current estimated 50% to 65% the proportion of newly diagnosed HIV-infected people in the United States, who are linked to appropriate prevention, care and treatment services.

**Short-term Milestone 4:** By 2010, strengthen the capacity nationwide to monitor the epidemic, develop and implement effective HIV prevention interventions and evaluate prevention programs.

The CDC requires states to use HIV prevention community planning groups as a prerequisite to receiving federal HIV prevention funding. Washington's Statewide HIV Prevention Planning Group, as well as our six Regional HIV Prevention Planning Groups, will review the *Extended Plan* to determine how best to incorporate its priorities into their planning processes.

The complete *Extended Plan* can be found at the CDC's website: <http://www.cdc.gov/hiv/resources/reports/psp/index.htm>

---

### New Statewide HIV Prevalence Estimates

The Washington State Department of Health estimates that the number of people living with HIV disease inside the state is currently (during January-March 2008) between 11,000 and 12,000. As of December 31, 2007, there were 10,016 people reported to have HIV or AIDS in Washington. This number does not reflect those who received anonymous tests for HIV and have not entered care. It also does not represent those who are HIV-positive but have never been tested. Anonymous testers who do not enter care are thought to make up a very small proportion (1-2%) of all people who have HIV. The proportion of individuals who are HIV-positive and who do not know their status is estimated to be 10%-20%.

Because cases reported to the state's HIV/AIDS surveillance system do not represent all people living with HIV, estimates must be developed in order to guide the allocation of public funds towards HIV prevention and care services. To reach reasonable estimates, the Department of

Health depends on four main types of information: the state's HIV/AIDS Reporting System (HARS), behavioral surveys, seroprevalence surveys, and population estimates provided by the Washington State Office of Financial Management. Every attempt is made to gather the best available information describing the size and behavioral characteristics of at-risk populations. Health department staff also collaborate with experts in statistics and mathematical modeling in order to ensure the methods being used to estimate HIV prevalence are valid and reliable.

HIV prevalence has risen steadily in recent years. Health department staff will continue to look closely at surveillance system data and other sources to monitor the accuracy of estimates and make adjustments as needed.

More information about HIV estimates can be found in the *HIV/AIDS Epidemiology Report, 1st Half 2007, pg. 9-10:* <http://www.metrokc.gov/health/apu/epi/epireports.htm>

## HOW HIV/AIDS SURVEILLANCE WORKS IN WASHINGTON STATE

Health care providers and facilities, laboratories and local health departments are required by law to report HIV- and AIDS-related information to local health departments or the State Department of Health according to the requirements listed below. Identifying and reporting on new cases of HIV infection allows for the reduction of the spread of the virus; it assures that newly infected persons receive care as early as possible, and that partners who have been exposed to HIV receive partner counseling and referral services. State and federal funding for HIV/AIDS disease control and care of infected persons is based on case numbers, which means that our state receives resources to slow the spread of the virus and to pay for needed HIV/AIDS care services when HIV/AIDS surveillance is complete, accurate and timely. Copies of the case report form can be found at the Department of Health website: <http://www.doh.wa.gov/notify/forms/>.

For federal funding purposes, all states and territories count HIV/AIDS cases in the same manner: an individual gets counted as an HIV case in the county in which he/she is residing at the time of his/her initial HIV diagnosis (not including a diagnosis made from an anonymous test). Once that person progresses to AIDS,

he/she will then get counted as an AIDS case in the county in which he/she is residing at the time of his/her AIDS diagnosis and will no longer be counted as an HIV case. This means that a county's HIV case count can actually go down over time if their HIV cases progress to AIDS in other counties. Additionally, states are continually working with each other to ensure that individuals are counted in only one state, so the case count for any individual county in Washington State could go down if we learn from another state that an individual from the county had an earlier diagnosis in the other state.

For epidemiologic and community planning purposes, it is often helpful to evaluate all cases of HIV and AIDS as being a part of one combined group: people who have been diagnosed with HIV disease. Hence, for most of this report, the assignment of newly diagnosed (or incident) HIV cases (including concurrent diagnoses of HIV and AIDS) to a specific geographic region is based on residence of the patient at the time of his/her initial HIV diagnosis. The assignment of prevalent cases to a specific geographic region is based on residence of the patient at the time of his/her most recent HIV or AIDS diagnosis.

### HIV/AIDS Reporting Requirements:

REPORTING ENTITY	ITEM TO REPORT	TIMELINE	TO WHOM
Health care providers	HIV or AIDS diagnosis	3 working days	Local health department
Health care facilities	HIV or AIDS diagnosis	3 working days	HIV to local health department AIDS to state health department
Laboratories	Positive Western blot	2 working days	State health department (PHSKC inside King County)
Laboratories	All CD4 count results (absolute and %); All HIV viral load results	Monthly	State health department (PHSKC inside King County)
Local health departments	HIV and AIDS	Within 7 days of completion or 21 days of notification	State health department

## DEFINITIONS

**Confidence interval (CI):** A range of values for a measure that is believed to contain the true value at a specified level of statistical certainty (e.g., 95%). On the bar charts in this report, vertical lines with short horizontal lines at either end represent the 95% confidence interval for the point estimate represented by the bar.

**Cumulative HIV/AIDS diagnoses:** The number of cases of a disease reported or diagnosed in a specified time, regardless of current vital status. Cumulative cases include those who have already died.

**Disease rate:** A measure of the frequency of a disease compared to the number of persons at risk for the disease. Usually, the general population, rather than the population potentially exposed to HIV infection by various high-risk behaviors, is used as the denominator since the latter is unknown.

**Exposure category:** Cases of HIV disease are counted only once in a hierarchy of modes of transmission. Persons with more than one reported mode of transmission are classified in the transmission mode first in the hierarchy. The exception is men who have sex with men and inject drugs, which has its own category. Persons whose mode of transmission is classified as high-risk heterosexual contact are persons who report heterosexual contact with a person with, or at increased risk for, HIV infection (e.g., an injection drug user). Undetermined risk (No Identified Risk, or NIR) represents persons for whom transmission history is incomplete.

**HIV diagnosis date:** The earliest date (month and year) associated with a verifiable report of HIV infection. Verifiable reports include positive antibody tests, detectable viral loads, positive antigens or cultures, or physician diagnoses, but not self-reported diagnosis dates, positive lab results from anonymous testing, or diagnosis dates from other states that remain unverified.

**Incidence:** The number of new cases of a disease that occur in a population during a certain time period, usually a year. For the purposes of HIV surveillance, "HIV incidence" refers to the number of newly diagnosed cases of HIV.

**Late HIV diagnosis:** Refers to anyone who is diagnosed with AIDS within 12 months of their initial HIV diagnosis.

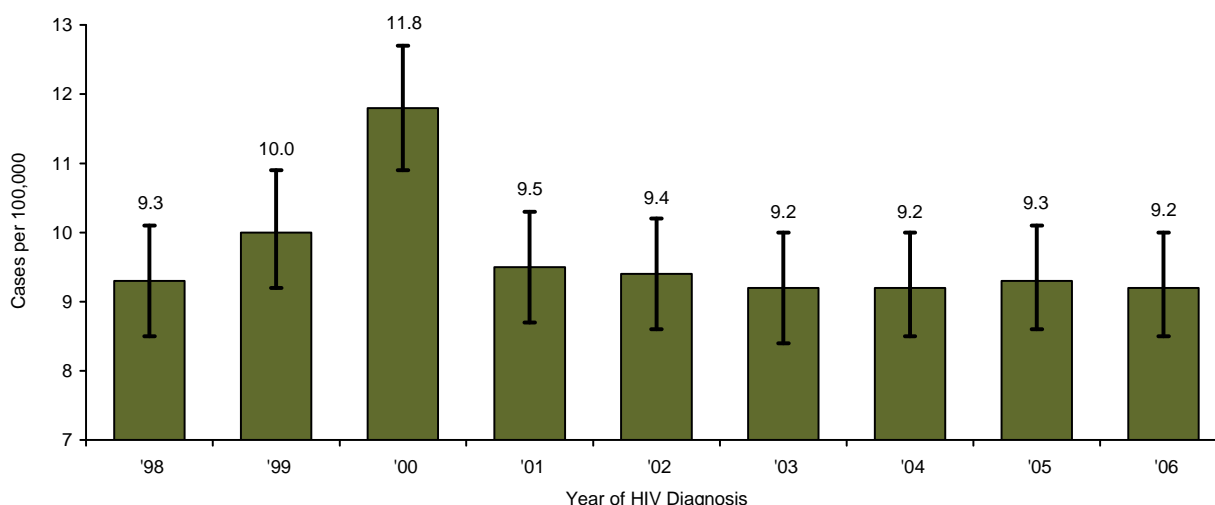
**New HIV diagnosis:** Refers to anyone who is diagnosed with HIV in a given time period, regardless of disease status.

**Prevalence:** The total number of persons with a specific disease or condition at a given time. HIV prevalence data are generally presented as "persons living with HIV disease."

**Reporting delay:** The time interval between the date a case is diagnosed and the date the case is reported to the health department. Reporting delay has the most impact on the most recent year of diagnosis, since case reporting for this year is likely to be incomplete. For that reason, presentations of new HIV diagnoses include cases through 2006. Since additional case reporting will likely have little impact on the number or distribution of prevalent cases, presentations of these data include cases diagnosed through 2007.

## DISEASE STATISTICS

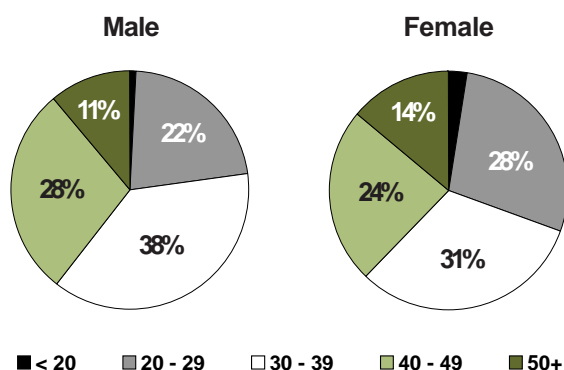
Figure 4. HIV Rates by Year of HIV Diagnosis, Washington State, 1998-2006



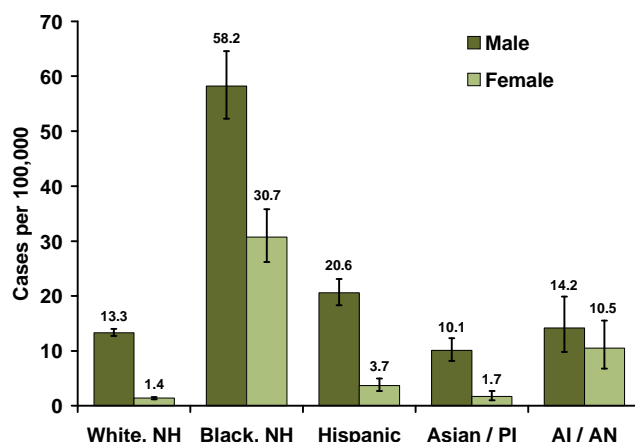
**Table 1. HIV Diagnoses**

Year of HIV diagnosis:	Newly Diagnosed Cases of HIV Disease						Late HIV Diagnoses			
	2002 No.	2003 No.	2004 No.	2005 No.	2006 No.	2007 No.	2002-2006 No.	%	Rate	2002-2006 %
<b>Total</b>	577	567	567	585	584	593	3,473	100%	9.3	31%
<b>Gender</b>										
Male	490	479	477	504	496	493	2,939	85%	15.8	31%
Female	87	88	90	81	88	100	534	15%	2.8	32%
<b>Age at HIV Diagnosis</b>										
< 20	6	7	4	7	10	21	55	2%	0.4	15%
20 - 29	134	114	136	125	146	157	812	23%	15.5	17%
30 - 39	240	232	188	210	189	173	1,232	35%	23.7	32%
40 - 49	139	153	177	170	159	150	948	27%	16.2	37%
50 - 59	43	46	55	57	63	69	333	10%	6.5	44%
60+	15	15	7	16	17	23	93	3%	1.5	54%
<b>Race and Hispanic Origin</b>										
White, non-Hispanic	362	358	352	363	376	348	2,159	62%	7.3	29%
Black, non-Hispanic	116	104	102	109	91	119	641	18%	45.4	35%
Hispanic (All Races)	58	67	65	72	68	87	417	12%	12.7	37%
Asian	21	15	18	22	28	23	143	4%	5.7	43%
Hawaiian/Pacific Islander	4	4	1	3	5	3	23	1%	1.5	1%
Amer. Indian /Alaska Native	12	14	16	9	7	6	64	2%	12.3	40%
Multi-race / Unknown	8	5	13	7	9	6	48	1%	---	24%
<b>Exposure category</b>										
Male/Male Sex (MSM)	332	337	320	308	334	327	1,958	56%	---	27%
Injecting Drug Use (IDU)	59	43	54	44	45	29	274	8%	---	35%
MSM and IDU	52	37	39	55	39	42	264	8%	---	18%
HR Heterosexual Contact	83	80	68	66	58	39	394	11%	---	39%
Pediatric	0	1	1	0	1	2	5	0%	---	0%
Transfusion / hemophiliac	1	1	5	5	0	1	13	0%	---	50%
No Identified Risk/ Other	50	68	80	107	107	153	565	16%	---	46%

**Figure 5. New HIV Diagnoses by Gender and Age at Diagnosis, Washington State, 2002-2006**



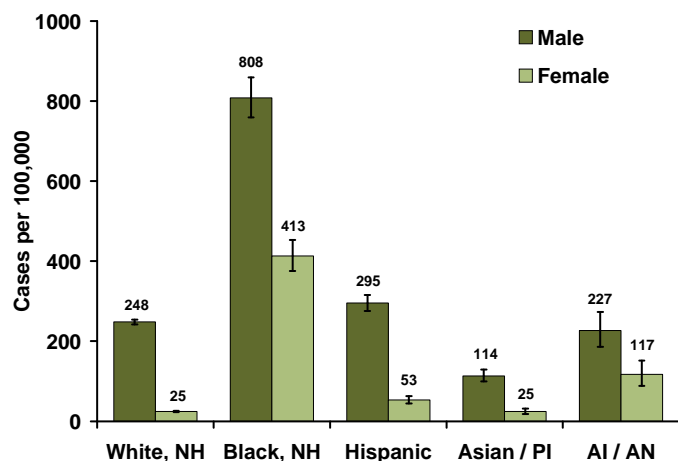
**Figure 6. New HIV Diagnosis Rates by Race/Ethnicity and Gender, Washington State, 2002-2006**



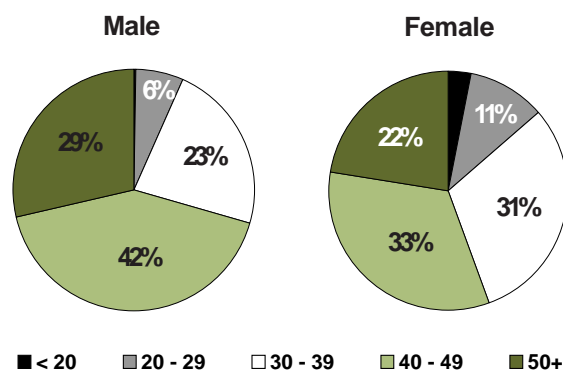
**Table 2. People Living with HIV Disease as of December 31, 2007**

	HIV (not AIDS)			AIDS			All Cases of HIV Disease		
	No.	%	Rate	No.	%	Rate	No.	%	Rate
<b>Total</b>	4,366	100%	67.3	5,650	100%	87.1	10,016	100%	154.4
<b>Gender</b>									
Male	3,717	85%	114.9	4,948	88%	153.0	8,665	87%	267.9
Female	649	15%	20.0	702	12%	21.6	1,351	13%	41.5
<b>Current age</b>									
< 20	49	1%	2.8	21	0%	1.2	70	1%	4.0
20 - 29	511	12%	55.5	186	3%	20.2	697	7%	75.7
30 - 39	1,269	29%	143.8	1,116	20%	126.5	2,385	24%	270.3
40 - 49	1,629	37%	166.9	2,462	44%	252.2	4,091	41%	419.1
50 - 59	717	16%	80.1	1,423	25%	158.9	2,140	21%	238.9
60+	191	4%	18.0	442	8%	41.6	633	6%	59.6
<b>Race and Hispanic Origin</b>									
White, non-Hispanic	3,084	71%	59.5	3,929	70%	75.8	7,013	70%	135.3
Black, non-Hispanic	654	15%	276.9	821	15%	347.6	1,475	15%	624.4
Hispanic (All Races)	400	9%	74.2	583	10%	108.2	983	10%	182.4
Asian / Pacific Islander	125	3%	29.0	161	3%	37.4	286	3%	66.4
Amer. Indian /Alaska Native	58	1%	59.1	110	2%	112.2	168	2%	171.3
Multi-race / Unknown	45	1%	---	45	1%	---	90	1%	---
<b>Exposure category</b>									
Male/Male Sex (MSM)	2,782	64%	---	3,401	60%	---	6,183	62%	---
Injecting Drug Use (IDU)	326	7%	---	531	9%	---	857	9%	---
MSM and IDU	334	8%	---	514	9%	---	848	8%	---
HR Heterosexual Contact	430	10%	---	606	11%	---	1,036	10%	---
Pediatric	34	1%	---	15	0%	---	49	0%	---
Transfusion / hemophiliac	20	0%	---	58	1%	---	78	1%	---
No Identified Risk/ Other	440	10%	---	525	9%	---	965	10%	---

**Figure 7. HIV Prevalence Rates by Race/Ethnicity and Gender, Washington State, End of 2007**



**Figure 8. People Living with HIV Disease by Gender and Current Age, Washington State, End of 2007**

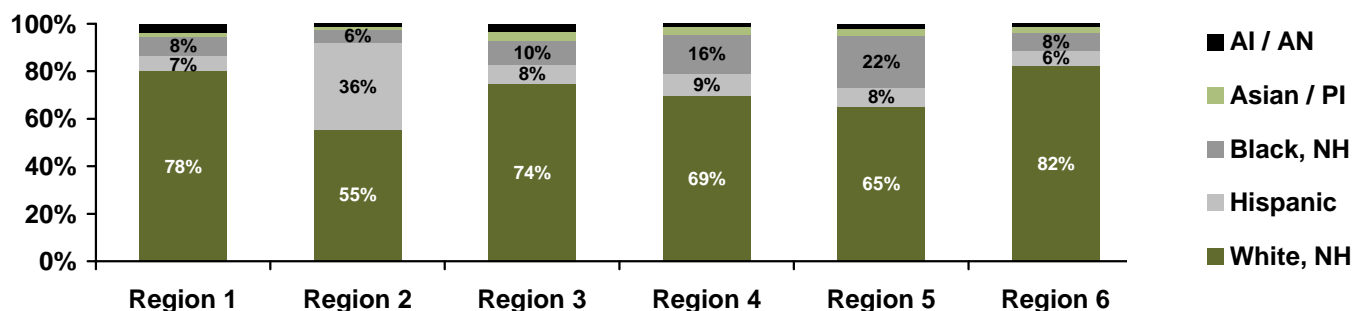


**Table 3. People Living with HIV Disease as of December 31, 2007:  
Exposure Category by Gender and Race/Ethnicity**

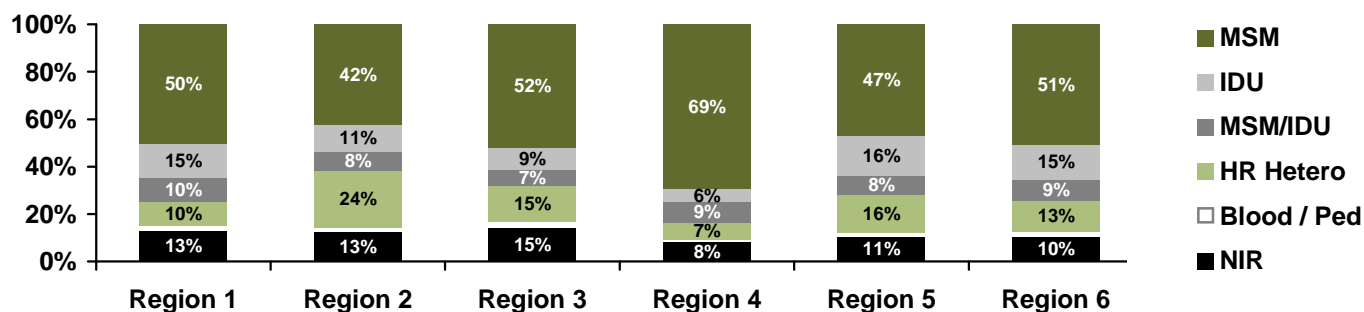
Exposure category	NH White		NH Black		Hispanic		Asian / Pacific Islander		American Indian/Alaska Native	
	No.	%	No.	%	No.	%	No.	%	No.	%
<b>Males:</b>										
Male/Male Sex (MSM)	4,856	76%	496	49%	554	65%	167	73%	55	50%
Injecting Drug Use (IDU)	368	6%	109	11%	65	8%	7	3%	16	15%
MSM and IDU	681	11%	60	6%	59	7%	7	3%	26	24%
HR Heterosexual Contact	131	2%	151	15%	57	7%	14	6%	7	6%
Pediatric	7	0%	9	1%	2	0%	2	1%	1	1%
Transfusion / hemophiliac	42	1%	3	0%	7	1%	1	0%	0	0%
No Identified Risk/ Other	285	4%	194	19%	106	12%	32	14%	5	5%
<b>Total Males*</b>	<b>6,370</b>	<b>100%</b>	<b>1,022</b>	<b>100%</b>	<b>850</b>	<b>100%</b>	<b>230</b>	<b>100%</b>	<b>110</b>	<b>100%</b>
<b>Females:</b>										
Injecting Drug Use (IDU)	177	28%	68	15%	12	9%	4	7%	27	47%
HR Heterosexual Contact	329	51%	207	46%	84	63%	28	50%	23	40%
Pediatric	10	2%	11	2%	5	4%	2	4%	0	0%
Transfusion / hemophiliac	7	1%	12	3%	3	2%	3	5%	0	0%
No Identified Risk/ Other	120	19%	155	34%	29	22%	19	34%	8	14%
<b>Total Females</b>	<b>643</b>	<b>100%</b>	<b>453</b>	<b>100%</b>	<b>133</b>	<b>100%</b>	<b>56</b>	<b>100%</b>	<b>58</b>	<b>100%</b>

\* 63 cases (56 male) were reported as belonging to more than one racial/ethnic group; race/ethnicity remains unknown for 38 cases (37 male)

**Figure 9. People Living with HIV Disease by AIDSNet Region and Race/Ethnicity Washington State, End of 2007**



**Figure 10. People Living with HIV Disease by AIDSNet Region and Exposure Category Washington State, End of 2007**



**Table 4. HIV Diagnoses by AIDSNet Region and County**

Year of HIV diagnosis:	Newly Diagnosed Cases of HIV Disease									Cumulative HIV Diagnoses	
	2002 No.	2003 No.	2004 No.	2005 No.	2006 No.	2007 No.	2002-2006 No.	%	Rate	No.	%
<b>AIDSNet Region 1</b>	<b>30</b>	<b>28</b>	<b>36</b>	<b>28</b>	<b>33</b>	<b>35</b>	<b>155</b>	<b>5%</b>	<b>4.5</b>	<b>890</b>	<b>5%</b>
Adams Co.	1	0	0	0	0	0	1	0%	---	6	0%
Asotin Co.	2	0	2	1	1	0	6	0%	---	20	0%
Columbia Co.	0	1	0	0	0	2	1	0%	---	7	0%
Ferry Co.	0	0	0	0	0	1	0	0%	---	8	0%
Garfield Co.	0	0	0	0	0	0	0	0%	---	1	0%
Lincoln Co.	0	0	1	0	0	0	1	0%	---	4	0%
Okanogan Co.	0	1	5	0	1	1	7	0%	---	35	0%
Pend Oreille Co.	0	0	0	0	1	0	1	0%	---	9	0%
Spokane Co.	23	23	27	23	27	31	123	4%	5.6	693	4%
Stevens Co.	2	2	1	1	1	0	7	0%	---	27	0%
Walla Walla Co.	1	1	0	1	1	0	4	0%	---	62	0%
Whitman Co.	1	0	0	2	1	0	4	0%	---	18	0%
<b>AIDSNet Region 2</b>	<b>25</b>	<b>22</b>	<b>22</b>	<b>27</b>	<b>30</b>	<b>29</b>	<b>126</b>	<b>4%</b>	<b>3.8</b>	<b>581</b>	<b>3%</b>
Benton Co.	8	2	0	2	8	5	20	1%	3.2	116	1%
Chelan Co.	2	2	3	5	4	3	16	1%	4.7	65	0%
Douglas Co.	0	0	0	0	0	2	0	0%	---	6	0%
Franklin Co.	5	5	5	6	2	3	23	1%	8.0	71	0%
Grant Co.	1	2	4	1	3	3	11	0%	---	46	0%
Kittitas Co.	1	1	1	3	3	0	9	0%	---	25	0%
Klickitat Co.	2	2	0	0	2	1	6	0%	---	16	0%
Yakima Co.	6	8	9	10	8	12	41	1%	3.6	236	1%
<b>AIDSNet Region 3</b>	<b>40</b>	<b>49</b>	<b>54</b>	<b>68</b>	<b>60</b>	<b>62</b>	<b>271</b>	<b>9%</b>	<b>5.3</b>	<b>1,371</b>	<b>8%</b>
Island Co.	3	6	2	0	2	2	13	0%	4.4	77	0%
San Juan Co.	0	0	1	0	1	1	2	0%	---	26	0%
Skagit Co.	2	4	7	6	5	3	24	1%	4.4	95	1%
Snohomish Co.	29	33	37	54	44	46	197	7%	6.1	956	6%
Whatcom Co.	6	6	7	8	8	10	35	1%	3.9	217	1%
<b>AIDSNet Region 4 (King Co.)</b>	<b>369</b>	<b>361</b>	<b>348</b>	<b>333</b>	<b>333</b>	<b>317</b>	<b>1,744</b>	<b>61%</b>	<b>19.3</b>	<b>10,726</b>	<b>64%</b>
<b>AIDSNet Region 5</b>	<b>56</b>	<b>60</b>	<b>50</b>	<b>72</b>	<b>76</b>	<b>74</b>	<b>314</b>	<b>11%</b>	<b>6.3</b>	<b>1,808</b>	<b>11%</b>
Kitsap Co.	9	10	10	9	14	9	52	2%	4.4	303	2%
Pierce Co.	47	50	40	63	62	65	262	9%	6.9	1,505	9%
<b>AIDSNet Region 6</b>	<b>57</b>	<b>47</b>	<b>57</b>	<b>57</b>	<b>52</b>	<b>76</b>	<b>270</b>	<b>9%</b>	<b>5.3</b>	<b>1,429</b>	<b>9%</b>
Clallam Co.	3	2	2	4	2	1	13	0%	3.9	75	0%
Clark Co.	32	25	26	28	22	43	133	5%	6.9	635	4%
Cowlitz Co.	7	3	4	2	6	5	22	1%	4.6	136	1%
Grays Harbor Co.	3	2	4	6	2	2	17	1%	4.9	82	0%
Jefferson Co.	0	0	1	0	3	1	4	0%	---	38	0%
Lewis Co.	0	1	1	0	4	1	6	0%	---	58	0%
Mason Co.	4	5	2	4	1	7	16	1%	6.3	101	1%
Pacific Co.	4	3	0	3	3	2	13	0%	14.2	31	0%
Skamania Co.	0	0	0	0	0	0	0	0%	---	7	0%
Thurston Co.	4	6	17	10	9	14	46	2%	4.1	263	2%
Wahkiakum Co.	0	0	0	0	0	0	0	0%	---	3	0%
<b>STATEWIDE TOTAL</b>	<b>577</b>	<b>567</b>	<b>567</b>	<b>585</b>	<b>584</b>	<b>593</b>	<b>2,880</b>	<b>100%</b>	<b>9.3</b>	<b>16,805</b>	<b>100%</b>

**Table 5. People Living with HIV Disease by AIDSNet Region and County**

	HIV (not AIDS)			AIDS			All Cases of HIV Disease		
	No.	%	Rate	No.	%	Rate	No.	%	Rate
<b>AIDSNet Region 1</b>	<b>192</b>	<b>4%</b>	<b>27.0</b>	<b>311</b>	<b>6%</b>	<b>43.8</b>	<b>503</b>	<b>5%</b>	<b>70.8</b>
Adams Co.	1	0%	---	4	0%	---	5	0%	---
Asotin Co.	3	0%	---	11	0%	---	14	0%	65.7
Columbia Co.	1	0%	---	2	0%	---	3	0%	---
Ferry Co.	1	0%	---	1	0%	---	2	0%	---
Garfield Co.	1	0%	---	0	0%	---	1	0%	---
Lincoln Co.	0	0%	---	2	0%	---	2	0%	---
Okanogan Co.	8	0%	---	17	0%	42.7	25	0%	62.8
Pend Oreille Co.	0	0%	---	3	0%	---	3	0%	---
Spokane Co.*	161	4%	35.7	229	4%	50.8	390	4%	86.4
Stevens Co.	7	0%	---	6	0%	---	13	0%	30.2
Walla Walla Co.	6	0%	---	25	0%	42.9	31	0%	53.2
Whitman Co.	3	0%	---	11	0%	---	14	0%	32.8
<b>AIDSNet Region 2</b>	<b>150</b>	<b>3%</b>	<b>21.1</b>	<b>234</b>	<b>4%</b>	<b>32.8</b>	<b>384</b>	<b>4%</b>	<b>53.9</b>
Benton Co.	33	1%	20.3	51	1%	31.3	84	1%	51.6
Chelan Co.	17	0%	23.9	21	0%	29.5	38	0%	53.4
Douglas Co.	2	0%	---	1	0%	---	3	0%	---
Franklin Co.	21	0%	31.2	33	1%	49.0	54	1%	80.1
Grant Co.	9	0%	---	17	0%	20.6	26	0%	31.5
Kittitas Co.	4	0%	---	10	0%	---	14	0%	36.6
Klickitat Co.	7	0%	---	3	0%	---	10	0%	---
Yakima Co.	57	1%	24.3	98	2%	41.8	155	2%	66.2
<b>AIDSNet Region 3</b>	<b>350</b>	<b>8%</b>	<b>32.3</b>	<b>525</b>	<b>9%</b>	<b>48.4</b>	<b>875</b>	<b>9%</b>	<b>80.7</b>
Island Co.	16	0%	20.4	28	0%	35.7	44	0%	56.1
San Juan Co.	7	0%	---	8	0%	---	15	0%	94.3
Skagit Co.	24	1%	---	30	1%	26.0	54	1%	46.8
Snohomish Co.	246	6%	35.8	380	7%	55.4	626	6%	91.2
Whatcom Co.	57	1%	30.3	79	1%	42.0	136	1%	72.2
<b>AIDSNet Region 4 (King Co.)</b>	<b>2796</b>	<b>64%</b>	<b>150.2</b>	<b>3464</b>	<b>61%</b>	<b>186.1</b>	<b>6,260</b>	<b>63%</b>	<b>336.3</b>
<b>AIDSNet Region 5</b>	<b>496</b>	<b>11%</b>	<b>47.9</b>	<b>584</b>	<b>10%</b>	<b>56.4</b>	<b>1,080</b>	<b>11%</b>	<b>104.3</b>
Kitsap Co.	79	2%	32.3	104	2%	42.5	183	2%	74.8
Pierce Co.	417	10%	52.8	480	8%	60.7	897	9%	113.5
<b>AIDSNet Region 6</b>	<b>382</b>	<b>9%</b>	<b>35.3</b>	<b>532</b>	<b>9%</b>	<b>49.1</b>	<b>914</b>	<b>9%</b>	<b>84.3</b>
Clallam Co.	21	0%	30.7	24	0%	35.0	45	0%	65.7
Clark Co.	189	4%	45.5	227	4%	54.7	416	4%	100.2
Cowlitz Co.	39	1%	39.9	44	1%	45.0	83	1%	84.9
Grays Harbor Co.	15	0%	21.2	31	1%	43.8	46	0%	65.0
Jefferson Co.	12	0%	42.0	9	0%	---	21	0%	73.4
Lewis Co.	10	0%	---	18	0%	24.3	28	0%	37.8
Mason Co.	23	1%	42.1	58	1%	106.2	81	1%	148.4
Pacific Co.	12	0%	55.6	7	0%	---	19	0%	88.0
Skamania Co.	0	0%	---	2	0%	---	2	0%	---
Thurston Co.	60	1%	25.2	110	2%	46.2	170	2%	71.4
Wahkiakum Co.	1	0%	---	2	0%	---	3	0%	---
<b>STATEWIDE TOTAL</b>	<b>4,366</b>	<b>100%</b>	<b>67.3</b>	<b>5,650</b>	<b>100%</b>	<b>87.1</b>	<b>10,016</b>	<b>100%</b>	<b>154.4</b>

**Table 6. AIDS Diagnoses and Deaths Attributed to HIV Disease**

	Recent AIDS Diagnoses 2002-2006			Cumulative AIDS Diagnoses 1982-2007		Cumulative HIV Deaths 1982-2007	
	No.	%	Rate	No.	%	No.	%
<b>Total</b>	2,038	100%	6.6	12,117	100%	5,274	100%
<b>Gender</b>							
Male	1,722	84%	11.2	10,991	91%	4,942	94%
Female	316	16%	2.0	1,126	9%	332	6%
<b>Age at AIDS diagnosis</b>						<b>Age at death</b>	
< 20	11	1%	---	87	1%	57	1%
20 - 29	242	12%	5.7	1,997	16%	476	9%
30 - 39	782	38%	17.6	5,394	45%	2,190	42%
40 - 49	690	34%	14.1	3,298	27%	1,719	33%
50 - 59	248	12%	6.1	1,024	8%	629	12%
60+	65	3%	1.4	317	3%	203	4%
<b>Race and Hispanic Origin</b>							
White, non-Hispanic	1,305	64%	5.3	9,208	76%	4,348	82%
Black, non-Hispanic	353	17%	31.1	1,426	12%	465	9%
Hispanic (All Races)	219	11%	8.4	924	8%	261	5%
Asian / Pacific Islander	88	4%	4.3	263	2%	83	2%
Amer. Indian /Alaska Native	49	2%	10.4	224	2%	93	2%
Multi-race / Unknown	24	1%	---	72	1%	24	0%
<b>Exposure category</b>							
Male/Male Sex (MSM)	1,076	53%	---	7,890	65%	3,722	71%
Injecting Drug Use (IDU)	220	11%	---	1,106	9%	449	9%
MSM and IDU	192	9%	---	1,207	10%	559	11%
HR Heterosexual Contact	271	13%	---	878	7%	207	4%
Pediatric	1	0%	---	31	0%	14	0%
Transfusion / hemophiliac	12	1%	---	219	2%	124	2%
No Identified Risk/ Other	266	13%	---	786	6%	199	4%

**ACKNOWLEDGEMENTS AND CONTACT INFORMATION**

Our thanks to the medical providers who care for people with HIV/AIDS, and to the local health jurisdiction partners and laboratories who work to ensure the timely and complete reporting of cases. These data are used to support the allocation of HIV prevention and care resources, program planning and evaluation, and education of a broad range of individuals about the state of the HIV epidemic in Washington.

For more information, please contact:

**Washington State Department of Health  
Infectious Disease and Reproductive Health Assessment Unit  
P.O. Box 47838, Olympia, WA 98504-7838  
Phone: 360-236-3455  
Email: HIV\_surv@doh.wa.gov**