

Island County

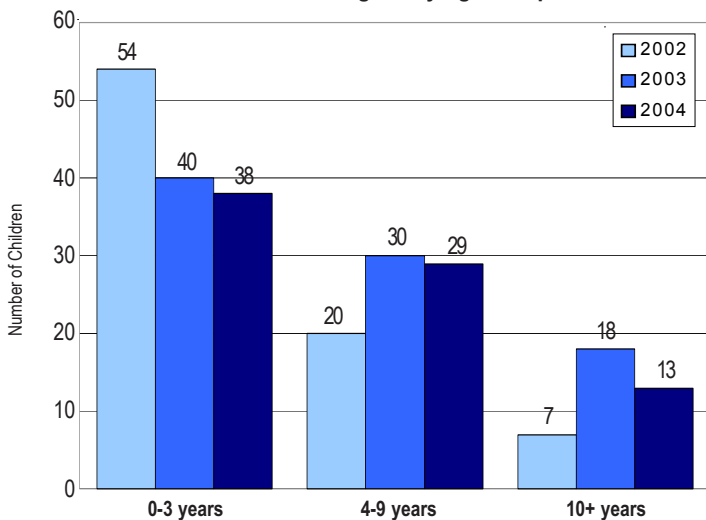
Profile of Children and Youth with Special Health Care Needs

Population of Children 0-19 Years by Age Group and Year

Age Group	1990	2000	2003	2004
0-4 years	5,001	4,781	4,818	4,830
5-9 years	4,679	5,179	4,969	4,957
10-14 years	3,854	5,259	5,381	5,356
15-19 years	3,500	4,734	4,842	4,871
Total	17,034	19,953	20,010	20,014

Source: Intercensal/Postcensal Population Estimates, Office of Financial Management

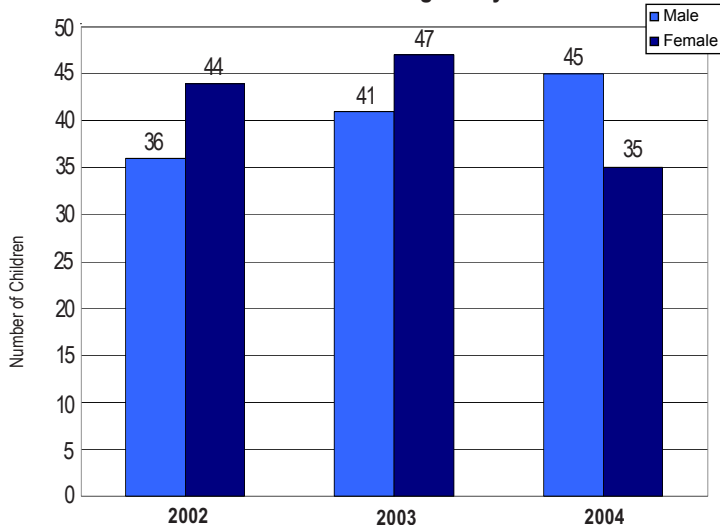
Number* of Children Served by Children with Special Health Care Needs Program by Age Group and Year



*Total number of children served: 2002=82, 2003=88, 2004=80. The number of children served by age and gender may not equal the total number of children served due to non-reporting of gender or age for some cases.

Source: Child Health Intake Forms, Children with Special Health Care Needs Program, Washington State Department of Health

Number* of Children Served by Children with Special Health Care Needs Program by Gender

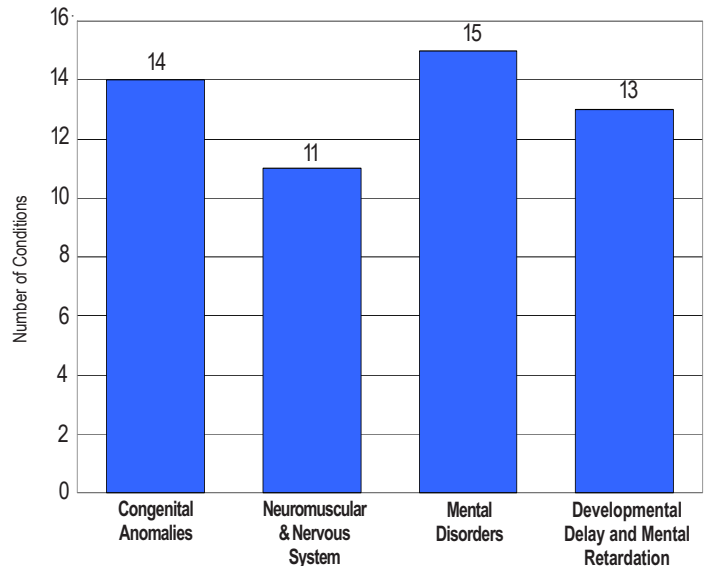


Source: Child Health Intake Forms, Children with Special Health Care Needs Program, Washington State Department of Health

“Children with special health care needs are children who have, or are at increased risk for, chronic physical, developmental, behavioral, or emotional conditions and who also require health and related services of a type or amount beyond that required by children generally.”

(Maternal and Child Health Bureau)

Leading Four Diagnostic Categories* among Children Served by the Children with Special Health Care Needs Program: 2004



*Based upon the number of conditions recorded for each child.

Source: Child Health Intake Forms, Children with Special Health Care Needs Program, Washington State Department of Health

Number of Children in Special Education Services under the Individuals with Disabilities Education Act (IDEA) Part B, as of December 1, 2004

Diagnostic Category	Number
Developmental Delay-Preschool	162
Serious Behavioral Disability	66
Orthopedic Impairment	9
Health Impairment	123
Specific Learning Disability	303
Mental Retardation	40
Multiple Disabilities	17
Deaf	*
Hearing Impairment	7
Visually Impaired	*
Deaf-Blindness	*
Communication Disorder	198
Autism	63
Traumatic Brain Injury	*
Total**	997

*Fewer than five or no cases reported.

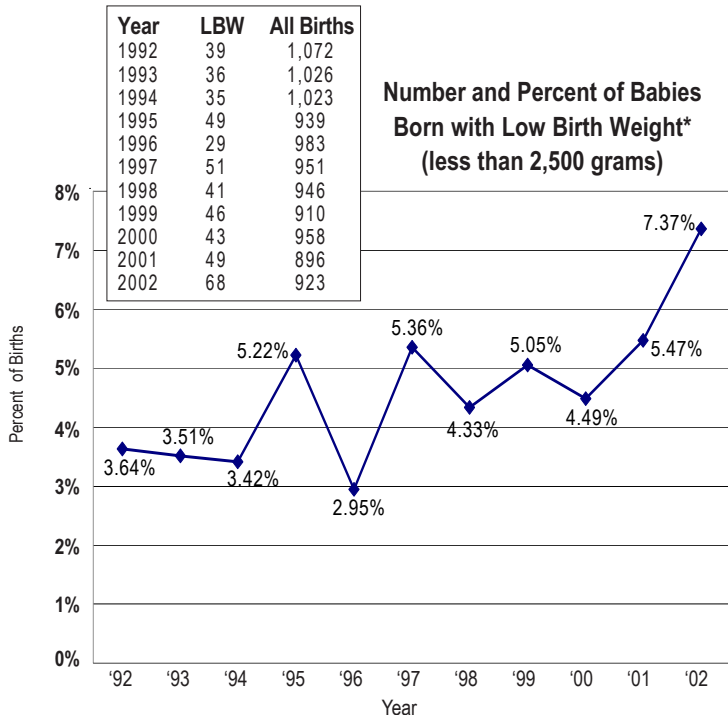
**Total includes categories containing fewer than five cases.

Source: Office of Superintendent of Public Instruction Special Education Operations IDEA Part B Child Count Report

Number of Children Age 0-35 Months with an Individualized Family Service Plan Who Received Early Intervention Services

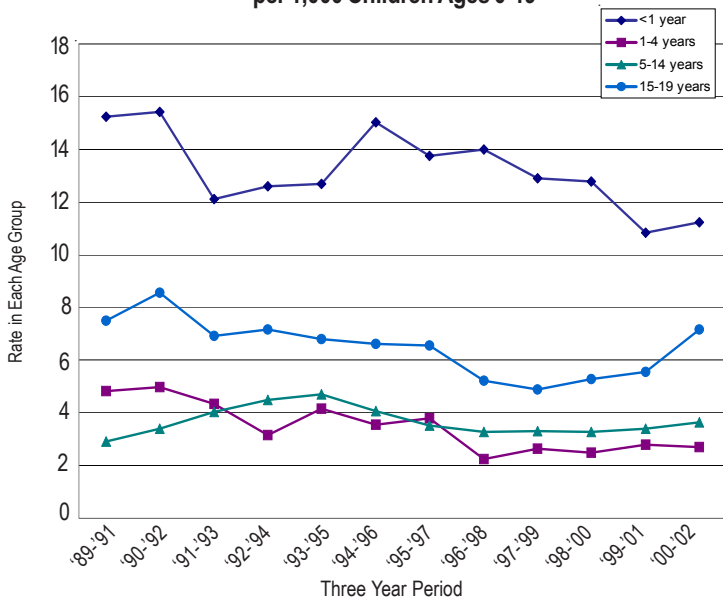
Oct. 2002-Sept. 2003	134
Oct. 2003-Sept. 2004	144

Source: Infant Toddler Early Intervention Program, Division of Developmental Disabilities, Department of Social and Health Services



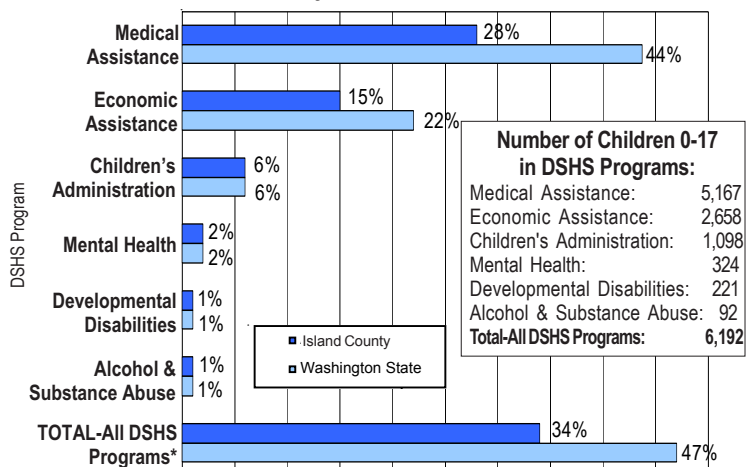
*Percent of births for which the birthweight is known.
Source: VistaPHw 5.0

Age-Specific Hospitalization Rate* for Chronic Conditions per 1,000 Children Ages 0-19



*Number of hospitalizations per 1,000 population of children in each age group calculated as three-year rolling averages.
Source: VistaPHw 5.0

Percent of Children Age 0-17 in Programs of the Department of Social and Health Services: July 2002 - June 2003

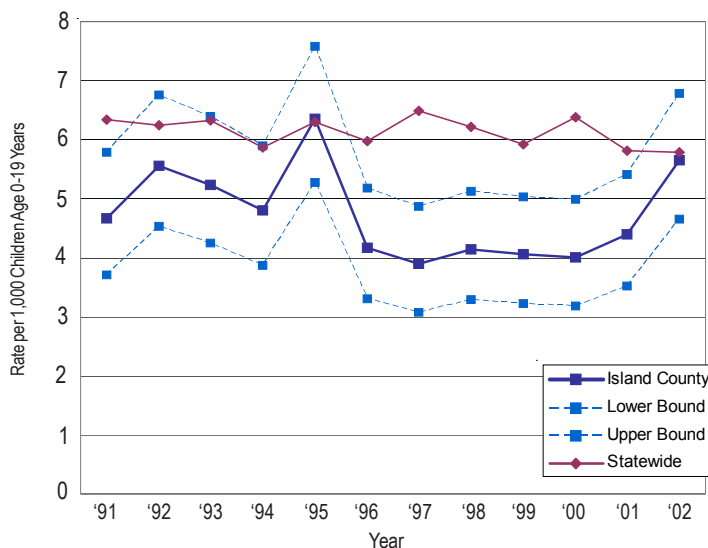


Number of Children 0-17 in DSHS Programs:

Medical Assistance:	5,167
Economic Assistance:	2,658
Children's Administration:	1,098
Mental Health:	324
Developmental Disabilities:	221
Alcohol & Substance Abuse:	92
Total-All DSHS Programs:	6,192

* Based upon unduplicated count of children within each service category.
Source: Client Services Database, Research and Data Analysis Division, Department of Social and Health Services

Hospitalization Rate* for Chronic Conditions per 1,000 Children Age 0-19 Years: County Rate Compared to State Rate



*Number of hospitalizations per 1,000 population of children 0-19.
Source: VistaPHw 5.0
Upper and lower bounds refer to the upper and lower range of the 95% confidence interval within which the actual rate lies.

This county profile is part of the Children and Youth with Special Health Care Needs: Washington State Report. For more information, contact the Children with Special Health Care Needs Program at (360) 236-3571, or <http://www.doh.wa.gov/cfh/mch/cshcnhome2.htm>