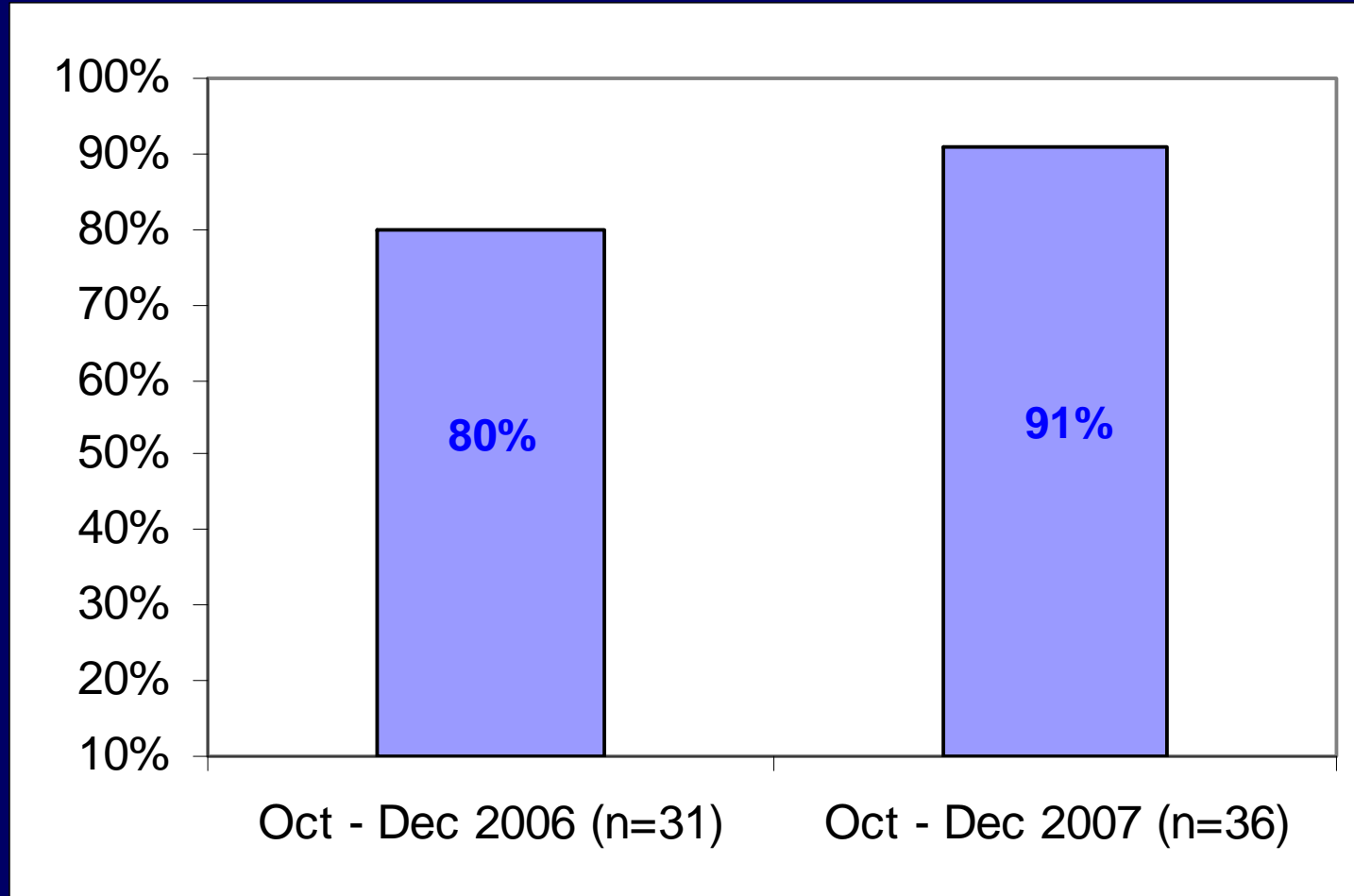


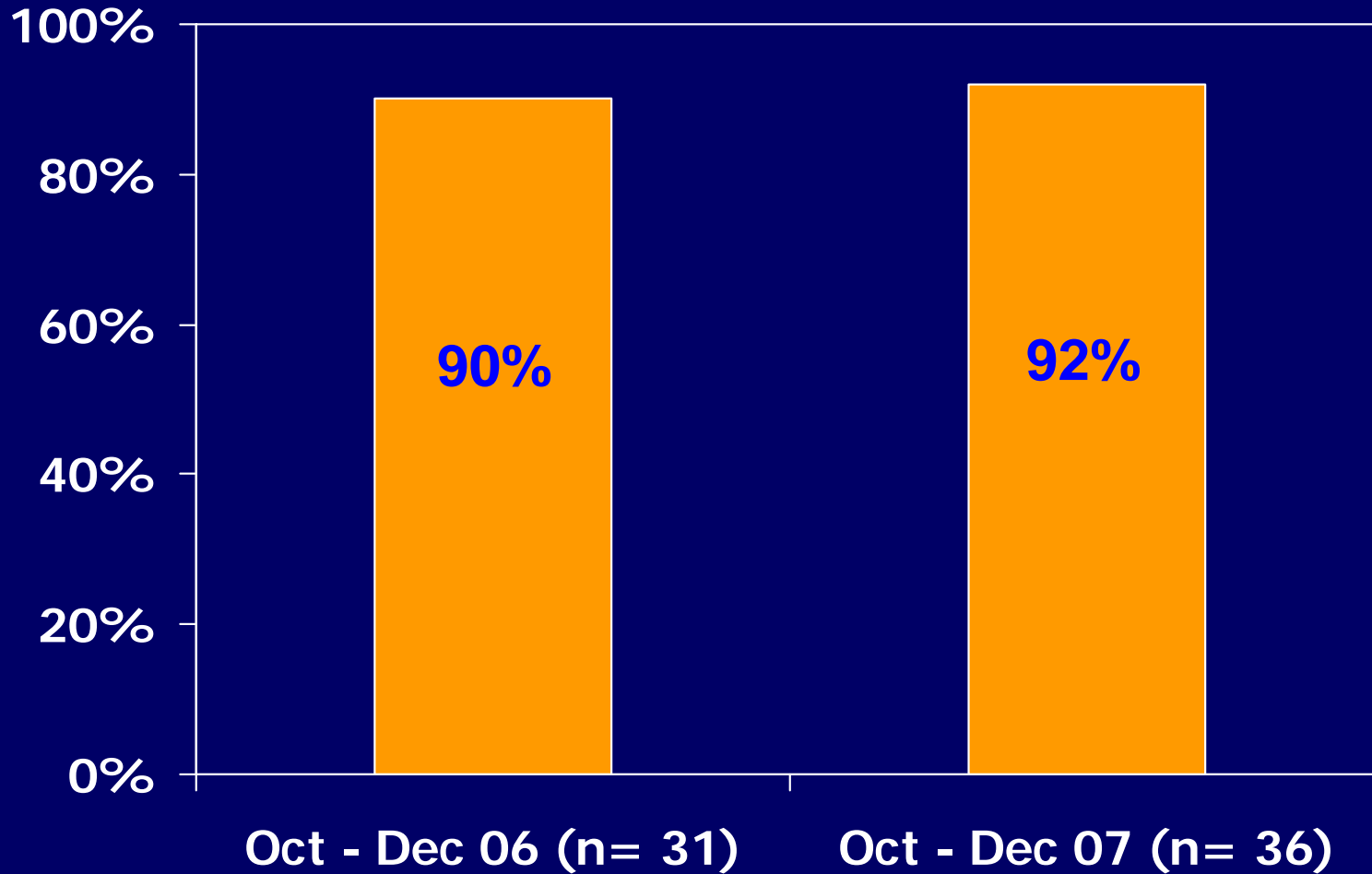
Washington State Cohort Review 2007: Fourth Quarter

Presented by: Kim Field, RN, MSN
Washington State Department of Health
January 14, 2009

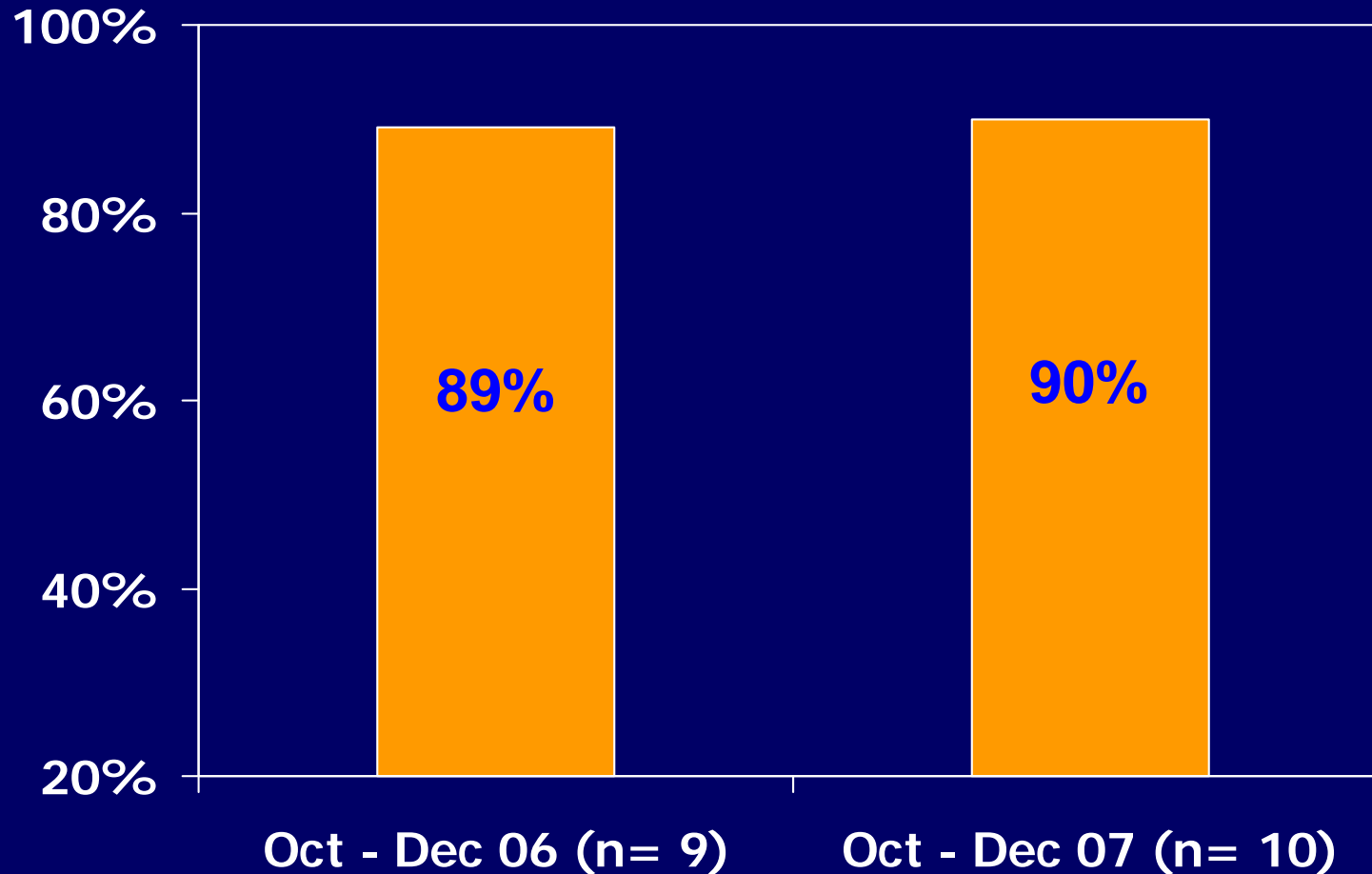
Percentage of cases on directly observed therapy (DOT), North/South regions



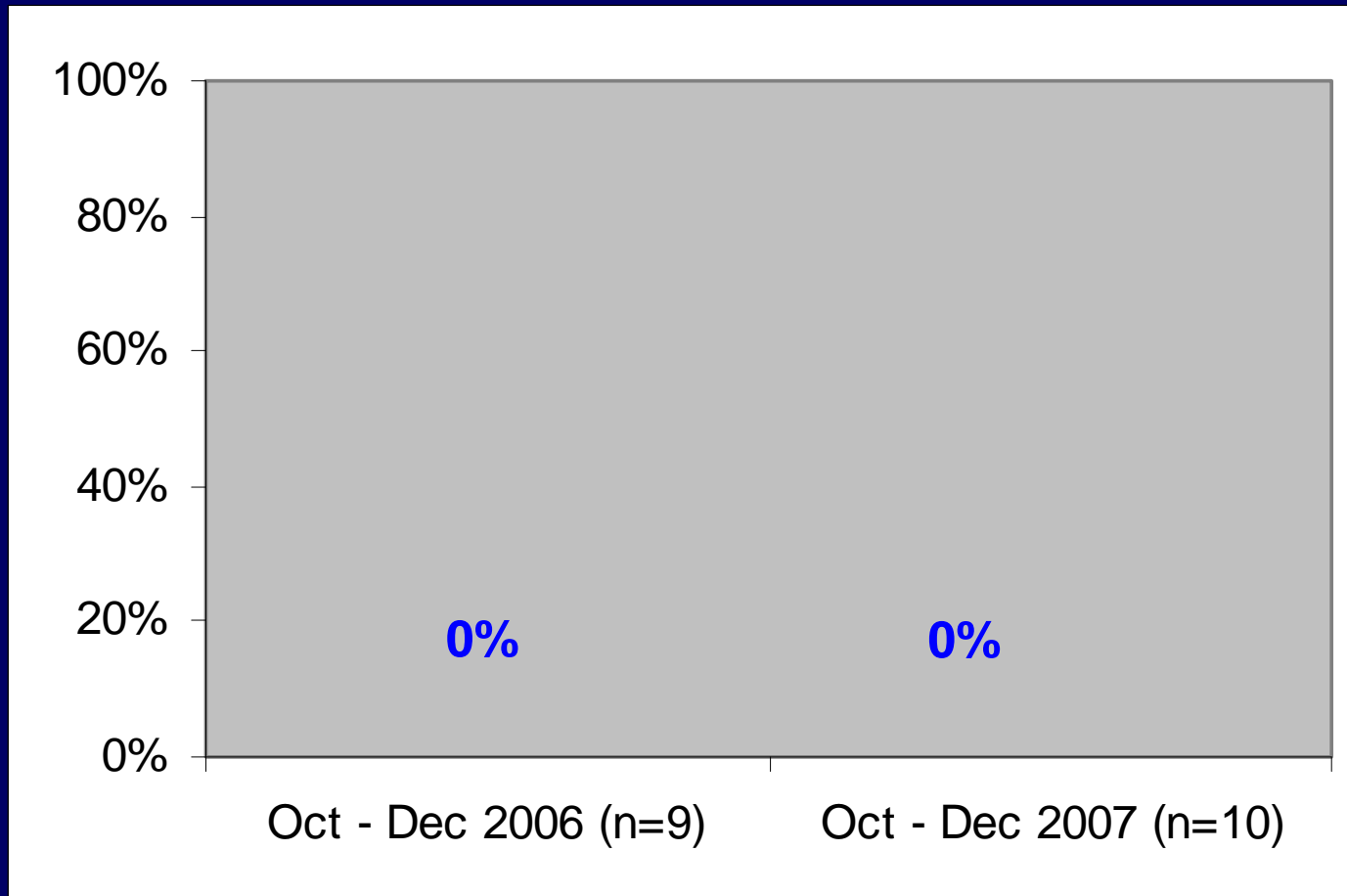
Percentage of cases offered an HIV test at time of TB screening, North/South regions



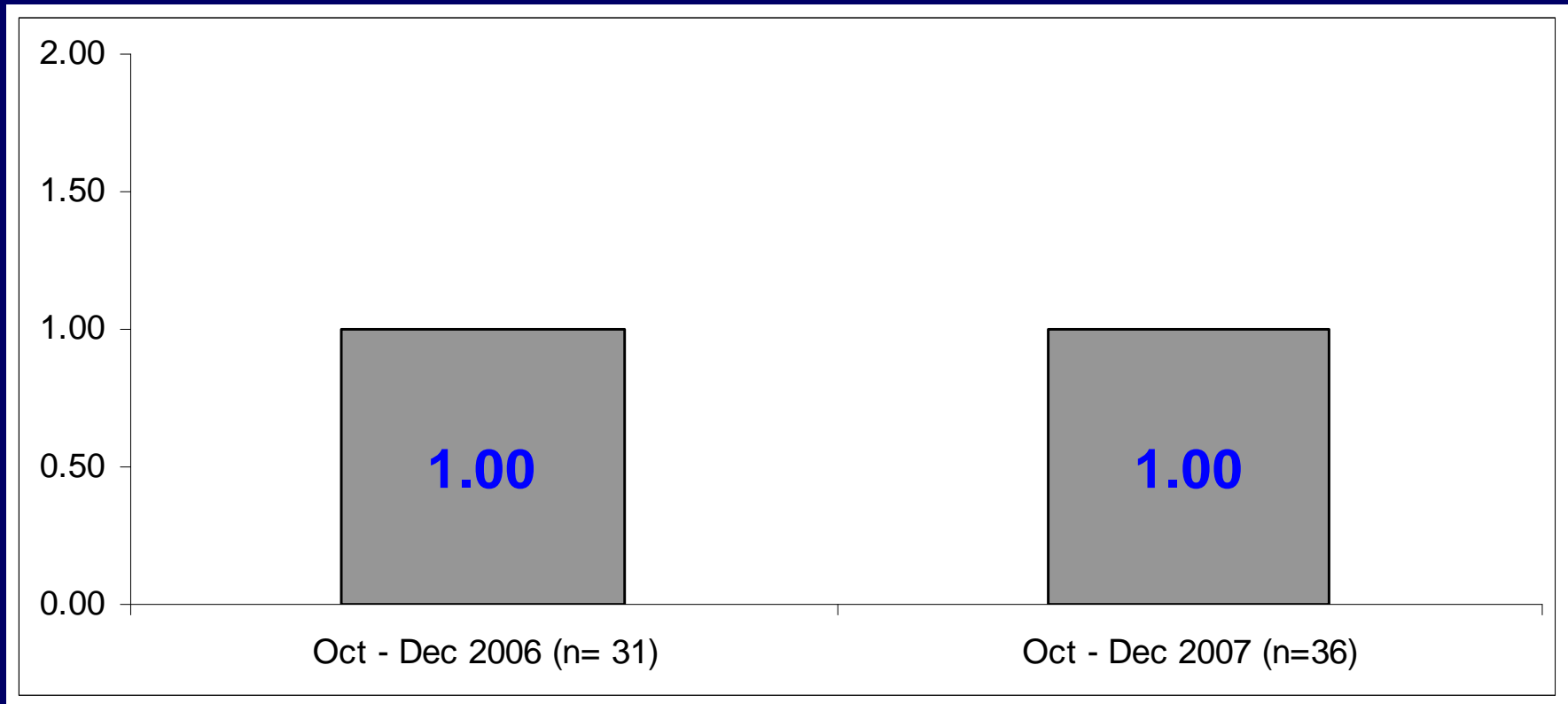
Percentage of infectious cases (smear +) "likely to complete" medications, North/South regions



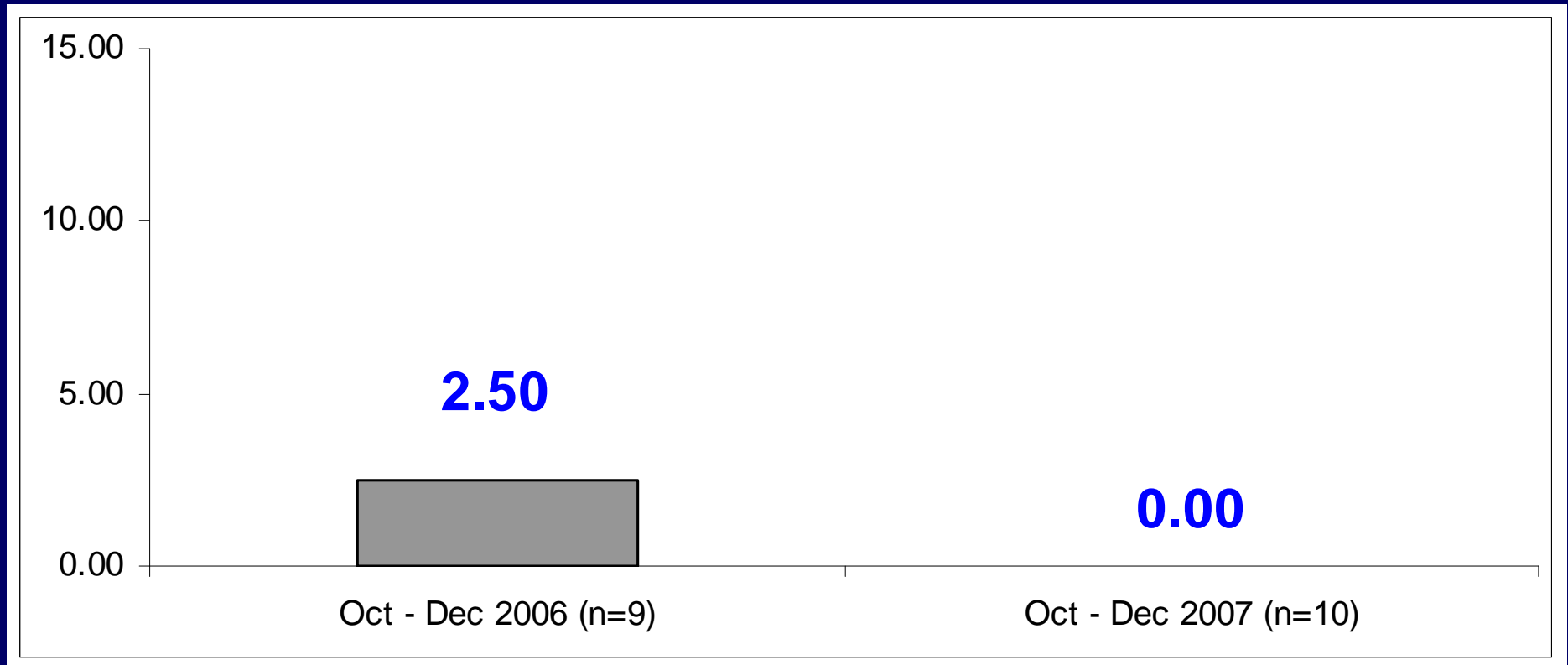
Percentage of infectious cases lost to follow-up or refused to continue treatment after starting, North/South regions



Median number of days between sputum collection and receipt at a lab, North/South regions



Median number of days between the smear + date and LHJ report of case to DOH, North/South regions



Cases: October - December 2007

North/South regions

- 80% of cases completed treatment; 89% expected to complete
 - 11% moved or died
 - 3% lost
- 91% were on DOT (100% for smear+)
- 8% not offered an HIV test
- 17% had medical adherence issues
- 9% had personal adherence issues
- 6% provider interrupted therapy

Cases: Oct - Dec 2007

North/South regions, cont'd

Median Number of Days: Timeliness Measures

- 3 cases had an MTD test
 - Of those that didn't (n=4 smear-culture+ cases)
 - Median of 10 days between date sputum was collected and date they started meds
- Lab Sputum Collection: 1 day
- Culture Testing: 17.5 days
- Susceptibility: 21 days

Contacts: October – December 2007

North/South regions

- 139 contacts identified to 36 cases; ~8 per case, median of 5.5
- 80% of smear + cases identified contacts (2 case didn't)
- 10 smear + cases identified 86 contacts
- 82% tested
 - 57% evaluated for TB
 - 21% infected
 - 21% infection rate (diseased + infected)
- **17% were infected by didn't start treatment**
- 83% of infected started treatment and of those...
 - 20% completed (4 contacts)
 - 55% currently on or not closed out in our database
 - 20% Provider discontinued meds (contacts to pediatric cases) (4 contacts)
 - 5% Moved (1 contact)