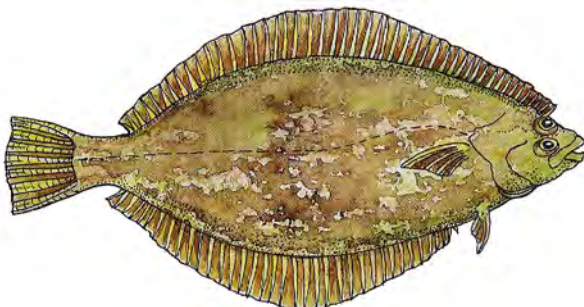
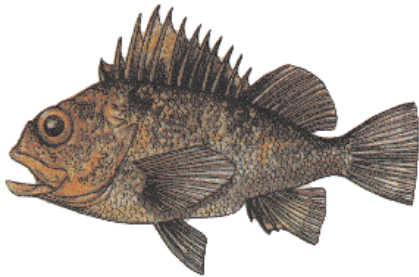


# Txwv txhob noj qaj nruab dleg

*Tug dlej Duwamish kws nyob huv nroog Seattle xeev Washington*

Tug dlej kws hu ua Duwamish muaj cov tshuaj Toxic Chemical nyob rua huv mas qas heev hab yuav ua rua mej muaj mob, tshwjxeeb heev rua cov mivnyuas mog kws tseem nyob huv leej nam lub plaab hab leej nam noj cov nqaj ntseg kws nyob rua huv tug dlej Duwamish nuav. Cov quaspuj kws suab tub los cov kws tseem yuav muaj mivnyuas rua yaav peg suab tsimnyog saib qhov txwv nuav ua ib qhov tseemceeb.

- Txhob noj cov ntseg kws zoo le nuav kws nyob rua huv tug dlej Duwamish ntau tshaaj ib hlis ib zag:



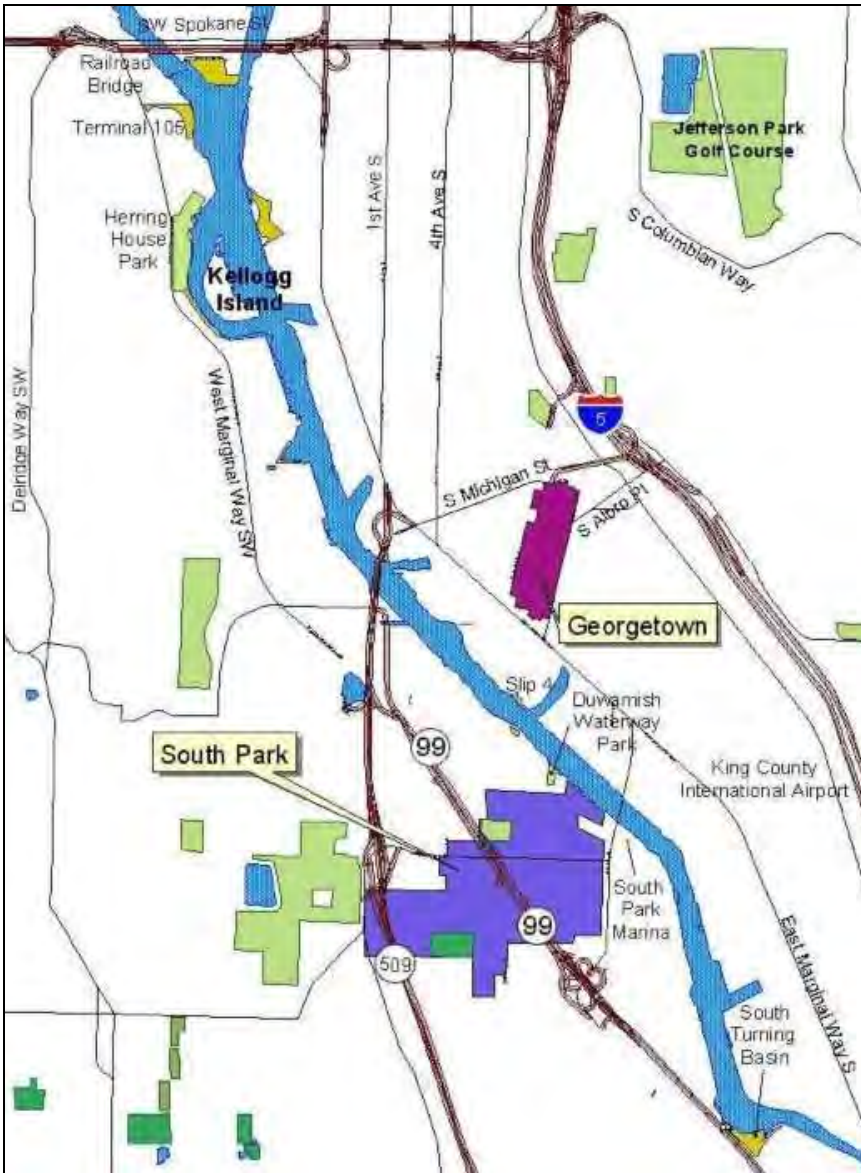
- Txhob noj cov Raubris los Plagdleg kws nuv tau huv dlej Duwamish nuav.



- Txhob noj cov nyuas kws zoo le quavntswg kws nyob rua huv tug Raubris lub cev (cov dluab kws pum Nyob rua huv dlaim dluab huv qaab Nuav) los txhob noj cov ntseg kws nuv tau huv tug dlej Duwamish nuav Tej sab ntsws



**Tug dlej  
Duwamish, Nroog  
Seattle, Xeev  
Washington**



Washington State Department of Health  
P.O. Box 47846  
Olympia, WA 98504-7846

DOH 333-084 July 2005

Hmong