

# Washington State Department of Health Office of Shellfish and Water Protection

## Annual Growing Area Review

**PREPARED BY:** Clyde Bill  
**AREA:** Bay Center  
**YEAR ENDING:** December 31, 2011  
**CLASSIFICATION:** Approved, Prohibited

### Activities in the Growing Area in 2011

Bay Center was sampled six times using the Systematic Random Sampling method. No major activities have been identified during the last year for the Bay Center growing area.

### Analytical Results of Water Samples

Table 1 summarizes the 30 most recent samples collected from the growing area. This summary shows that all stations pass NSSP standards for an Approved growing area. Stations 112 and 113, located along the Palix River channel, have had an increase in the 90<sup>th</sup> percentile values that places those stations in the program's Concerned status.

### Change in Actual Pollution Sources that Impact the Growing Area

We currently have no information indicating that the growing area has new sources of pollution.

### Classification Status

- Well within the classification standards
- Meets standards, but some concerns
- Meets standards, but threatened with downgrade in classification
- Fails to meet current classification standards

### Remarks and Recommendations

Table 1 show that all stations in the Bay Center growing area meet NSSP water quality standards for an Approved classification and the area is correctly classified.

**TABLE 1**  
**SUMMARY OF MARINE WATER DATA (SRS)**  
 Growing Area: **BAY CENTER**  
 Classification: **Approved, Prohibited, Unclassified**  
 From **10/18/2006** To **12/13/2011**  
**FECAL COLIFORM ORGANISMS/100 ML**

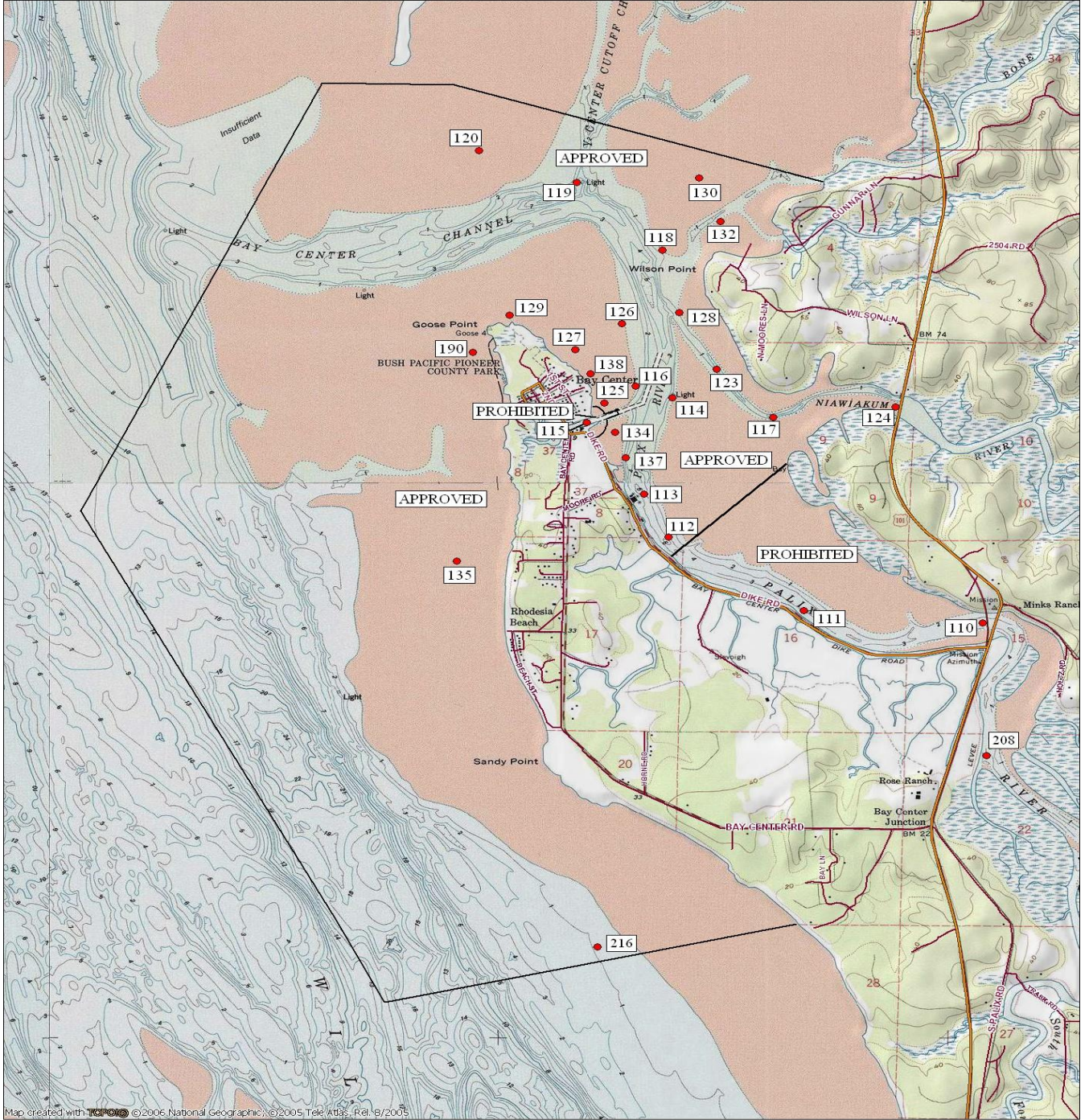
<b>Station Number</b>	<b>Classification</b>	<b>Number of Samples</b>	<b>Range</b>	<b>Geometric Mean</b>	<b>Est. 90th Percentile</b>	<b>Meets Std.</b>
112	Approved	31	1.7 - 220.0	4.2	23.0	Yes
113	Approved	30	1.7 - 110.0	4.2	23.0	Yes
114	Approved	31	1.7 - 13.0	2.3	4.0	Yes
116	Approved	31	1.7 - 49.0	2.3	5.0	Yes
117	Approved	31	1.7 - 33.0	2.8	8.0	Yes
118	Approved	30	1.7 - 11.0	2.0	3.0	Yes
119	Approved	31	1.7 - 33.0	2.3	6.0	Yes
120	Approved	31	1.7 - 17.0	2.0	4.0	Yes
123	Approved	31	1.7 - 23.0	2.4	5.0	Yes
124	Approved	31	1.7 - 110.0	4.0	19.0	Yes
125	Approved	31	1.7 - 110.0	3.2	12.0	Yes
126	Approved	31	1.7 - 17.0	2.3	5.0	Yes
127	Approved	31	1.7 - 49.0	3.0	9.0	Yes
128	Approved	31	1.7 - 17.0	2.0	4.0	Yes
129	Approved	31	1.7 - 4.5	1.8	2.0	Yes
130	Approved	32	1.7 - 11.0	2.2	4.0	Yes
132	Approved	31	1.7 - 26.0	2.2	4.0	Yes
134	Approved	31	1.7 - 170.0	3.6	16.0	Yes
135	Approved	31	1.7 - 11.0	2.1	4.0	Yes
137	Approved	31	1.7 - 79.0	4.3	17.0	Yes
138	Approved	31	1.7 - 130.0	3.0	11.0	Yes
190	Approved	30	1.7 - 17.0	2.1	4.0	Yes
216	Approved	7	1.7 - 7.8	2.1	4.0	*N/A
110	Prohibited	31	1.7 - 350.0	8.8	49.0	No
111	Prohibited	31	1.7 - 240.0	7.2	39.0	Yes
115	Prohibited	31	1.7 - 350.0	9.2	55.0	No
208	Unclassified	18	1.7 - 350.0	14.1	98.0	*N/A

All tides information is presented

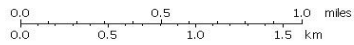
The standard for approved shellfish growing waters is fecal coliform geometric mean not greater than 14 organisms/100 ml and an estimate of the 90th percentile not greater than 43 organisms/100 ml. The above table shows bacteriological results in relation to program standards.

\* N/A - SRS criteria require a minimum of 30 samples from each station. \*

† All samples have been verified.



Map created with ©2006 National Geographic. ©2005 Tele Atlas. Rel. 8/2005



TN 17Y<sub>2</sub>  
09/17/10