

# Washington State Department of Health Office of Shellfish and Water Protection

## Annual Growing Area Review

**PREPARED BY:** Ann Harvey  
**AREA:** Bruceport  
**YEAR ENDING:** December 31, 2011  
**CLASSIFICATION:** Approved, Prohibited

### Activities In The Growing Area In Current Year

Samples were collected from the growing area six times during the year using the Systematic Random Sampling method. A shoreline survey was completed for the growing area. No direct or indirect impacts were identified. The cities of Raymond and South Bend continue to work towards a regional wastewater treatment plant. The proposed outfall will be located near the current Raymond WWTP, approximately six miles upstream.

### Analytical Results Of Water Samples

Table 1 summarizes the results of all samples collected from the area. This summary shows that all stations in the Approved area pass the NSSP water quality standard.

### Change In Actual Pollution Sources That Impact The Growing Area

We currently have no information indicating that the area has new sources of pollution.

### Classification Status

- Well within the classification standards
- Meets standards, but some concerns
- Meets standards, but threatened with downgrade in classification
- Fails to meet current classification standards

### Remarks About Classification Status

Table 1 shows that all stations classified as Approved meet the NSSP water quality standards for an Approved classification and the area is correctly classified.

### Recommendations

The area is correctly classified and should remain classified as **Approved**.

TABLE 1

**SUMMARY OF MARINE WATER DATA (SRS)**

Growing Area: **BRUCEPORT**

Classification: **Approved,Prohibited**

From **12/20/2006** To **12/31/2011**

**FECAL COLIFORM ORGANISMS/100 ML**

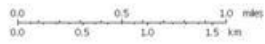
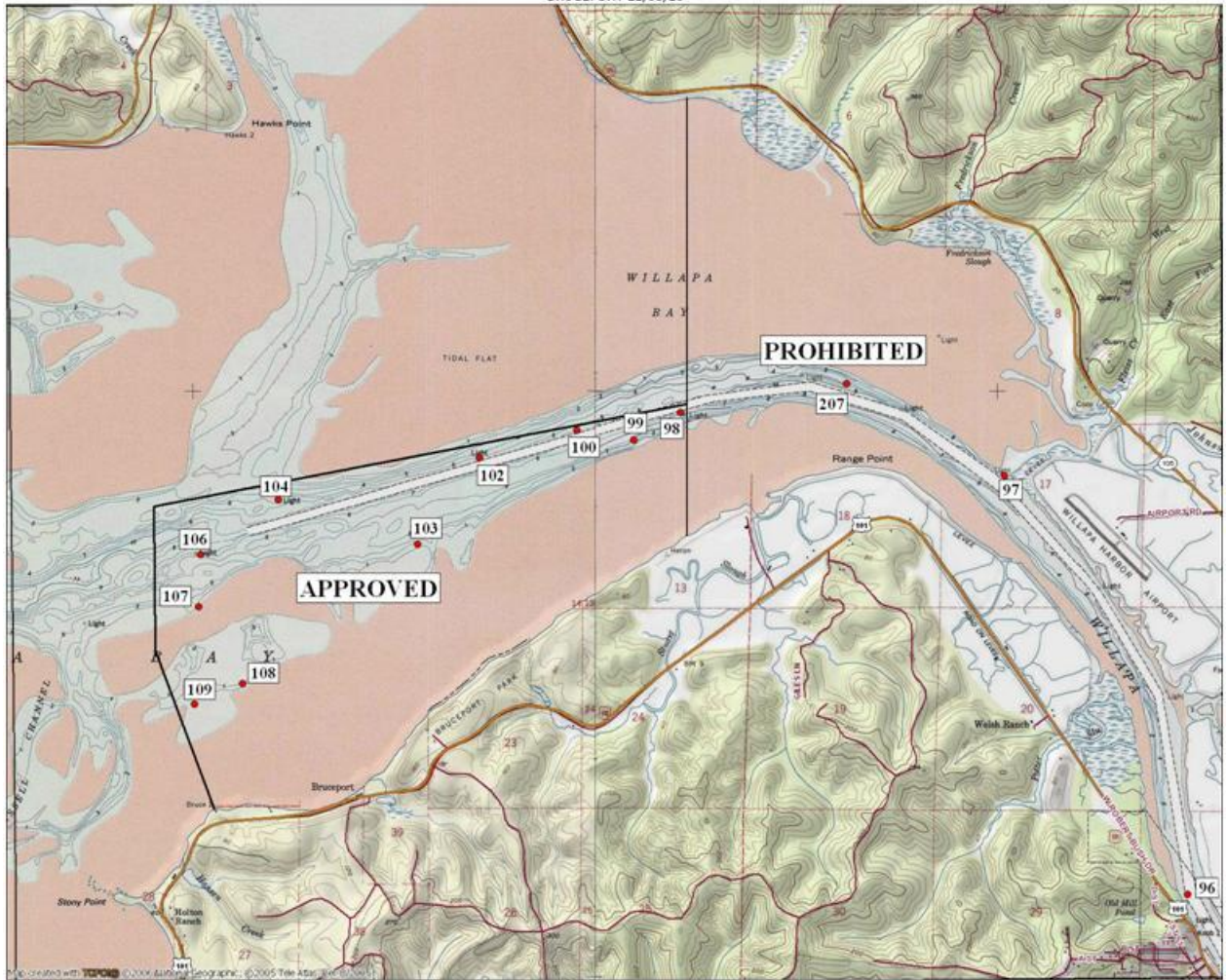
<b>Station Number</b>	<b>Classification</b>	<b>Number of Samples</b>	<b>Range</b>	<b>Geometric Mean</b>	<b>Est. 90th Percentile</b>	<b>Meets Std.</b>
98	Approved	31	1.7 - 70.0	4.8	19.0	Yes
99	Approved	31	1.7 - 33.0	3.6	12.0	Yes
100	Approved	31	1.7 - 33.0	2.9	8.0	Yes
102	Approved	31	1.7 - 33.0	3.2	10.0	Yes
103	Approved	31	1.7 - 17.0	2.4	5.0	Yes
104	Approved	31	1.7 - 14.0	2.4	5.0	Yes
106	Approved	31	1.7 - 7.8	2.1	4.0	Yes
107	Approved	31	1.7 - 7.8	2.1	3.0	Yes
108	Approved	31	1.7 - 13.0	2.5	5.0	Yes
109	Approved	30	1.7 - 23.0	2.3	5.0	Yes
96	Prohibited	31	2.0 - 70.0	16.9	51.0	No
97	Prohibited	31	1.7 - 79.0	9.7	43.0	No
207	Prohibited	26	1.7 - 110.0	7.0	36.0	*N/A

All tides information is presented

The standard for approved shellfish growing waters is fecal coliform geometric mean not greater than 14 organisms/100 ml and an estimate of the 90th percentile not greater than 43 organisms/100 ml. The above table shows bacteriological results in relation to program standards.

\* N/A - SRS criteria require a minimum of 30 samples from each station. \*

† All samples have been verified.



11/08/10