

Washington State Department of Health Office of Shellfish and Water Protection

Annual Growing Area Review

PREPARED BY: Clyde Bill
AREA: Colvos Passage
YEAR ENDING: December 31, 2011
CLASSIFICATION: Approved, Prohibited, Unclassified

Activities In The Growing Area in 2011

Samples were collected six times from Colvos passage during the year using the Systematic Random Sampling method.

Analytical Results Of Water Samples

Table 1 summarizes the results of all the samples collected from Colvos Passage. This summary shows that all stations in the Approved portion of the growing area pass the NSSP water quality standard.

Change In Actual Pollution Sources That Impact The Growing Area

We currently have no information indicating that the area has new sources of pollution.

Classification Status

- Well within the classification standards
- Meets standards, but some concerns
- Meets standards, but threatened with downgrade in classification
- Fails to meet current classification standards

Remarks and Recommendations

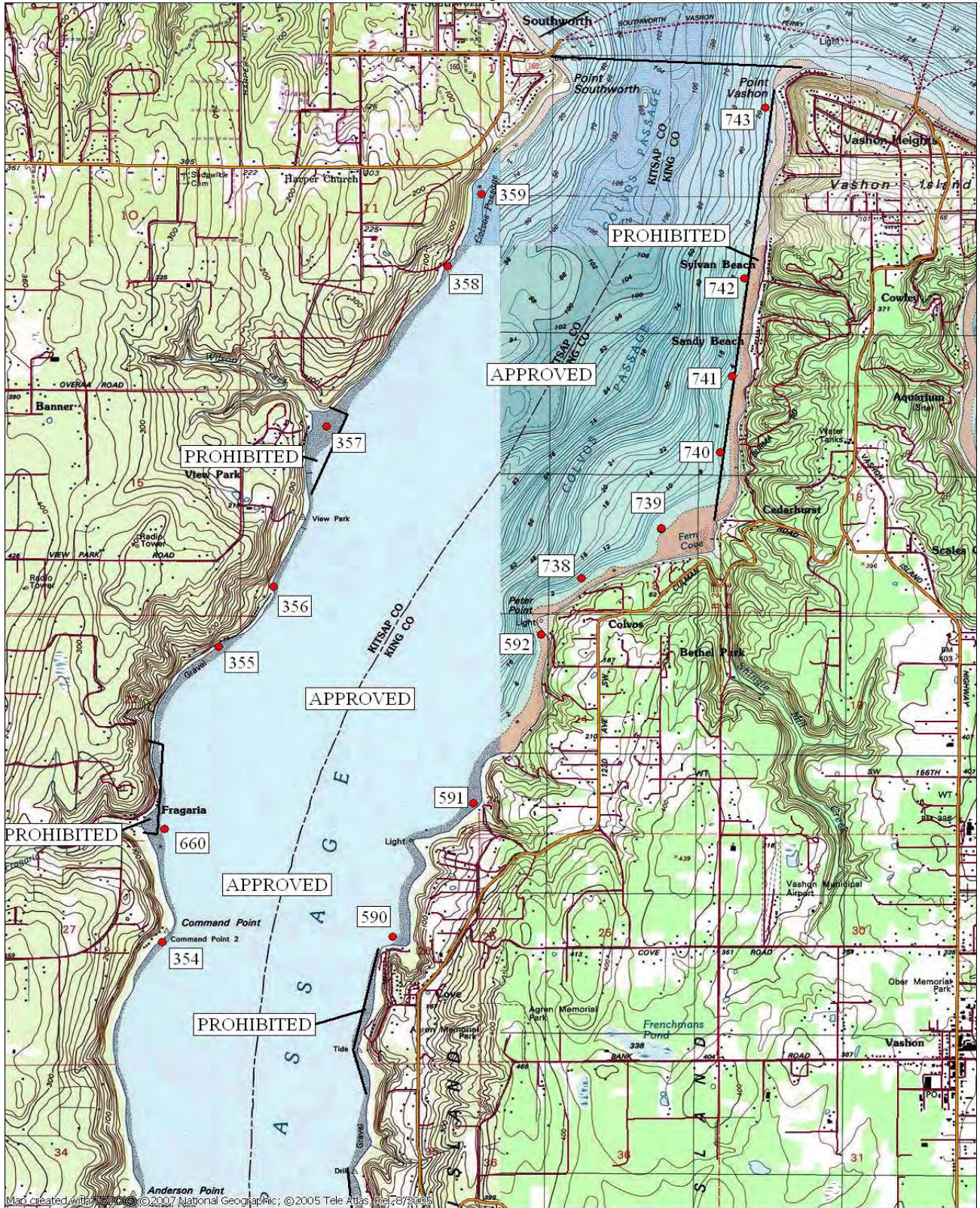
Table 1 show that all stations meet NSSP water quality standards for an Approved classification and the area is correctly classified. Portions of the growing area continue to be impacted by failing on-site sewage systems.

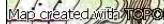
TABLE 1

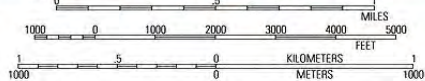
**Summary of Marine Water Data (SRS)
 Growing Area: Colvos Passage
 Classification: Approved, Prohibited, Unclassified**

Fecal Coliform Organisms/100 ml							
Station	Sample Date Range	Classification	Number of Samples	Range	Geometric Mean	Est. 90th Percentile	Meets Std.
353	10/16/2006 – 12/1/2011	Approved	30	<1.8 – 140	2.1	6.0	Yes
354	1/24/2007 – 12/1/2011	Approved	30	<1.8 – 2	<1.8	1.0	Yes
355	1/24/2007 – 12/1/2011	Approved	30	<1.8 – 2	<1.8	1.0	Yes
356	1/24/2007 – 12/1/2011	Approved	30	<1.8 – 17	1.8	3.0	Yes
357	1/24/2007 – 12/1/2011	Prohibited	30	<1.8 – 6.8	<1.8	2.0	Yes
358	1/24/2007 – 12/1/2011	Approved	30	<1.8 – 2	<1.8	1.0	Yes
359	10/16/2006 – 12/1/2011	Approved	30	<1.8 – 4.5	1.8	2.0	Yes
563	5/1/2008 – 12/1/2011	Unclassified	30	<1.8 - 22	2.1	4.0	Yes
587	1/24/2007 – 12/1/2011	Approved	30	<1.8 – 4.5	1.8	2.0	Yes
588	1/24/2007 – 12/1/2011	Approved	30	<1.8 – 7.8	1.9	3.0	Yes
589	1/24/2007 – 12/1/2011	Prohibited	30	<1.8 - 13	2.0	3.0	Yes
590	1/24/2007 – 12/1/2011	Approved	30	<1.8 – 4.5	<1.8	2.0	Yes
592	1/24/2007 – 12/1/2011	Approved	30	<1.8 – 4.5	1.8	2.0	Yes
659	1/24/2007 – 12/1/2011	Unclassified	30	<1.8 – 33	2.5	6.0	Yes
660	1/24/2007 – 12/1/2011	Approved	30	<1.8 - 33	2.3	5.0	Yes
725	5/1/2008 – 12/1/2011	Unclassified	30	<1.8 – 33	2.3	6.0	Yes
726	5/1/2008 – 12/1/2011	Unclassified	30	<1.8 – 11	1.9	3.0	Yes
727	5/1/2008 – 12/1/2011	Unclassified	30	<1.8 – 17	1.8	3.0	Yes
728	5/1/2008 – 12/1/2011	Unclassified	30	<1.8 – 11	1.9	3.0	Yes
729	5/1/2008 – 12/1/2011	Unclassified	30	<1.8 – 4.5	1.9	2.0	Yes
730	5/1/2008 – 12/1/2011	Unclassified	30	<1.8 – 46	2.3	5.0	Yes
731	5/1/2008 – 12/1/2011	Unclassified	30	<1.8 – 7.8	1.8	2.0	Yes
732	5/1/2008 – 12/1/2011	Unclassified	30	<1.8 – 11	1.9	3.0	Yes
733	5/1/2008 – 12/1/2011	Unclassified	30	<1.8 – 4.5	1.8	2.0	Yes
734	5/1/2008 – 12/1/2011	Unclassified	30	<1.8 – 4.5	<1.8	2.0	Yes
735	5/1/2008 – 12/1/2011	Unclassified	30	<1.8 – 170	2.0	6.0	Yes
736	5/1/2008 – 12/1/2011	Unclassified	30	<1.8 – 2	<1.8	1.0	Yes
737	5/1/2008 – 12/1/2011	Unclassified	30	<1.8 – 4	<1.8	2.0	Yes
738	5/1/2008 – 12/1/2011	Approved	30	<1.8 – 11	2.0	3.0	Yes
739	5/1/2008 – 12/1/2011	Approved	30	<1.8 – 4.5	1.8	2.0	Yes
740	5/1/2008 – 12/1/2011	Approved	30	<1.8 – 4.5	1.9	2.0	Yes
741	5/1/2008 – 12/1/2011	Approved	30	<1.8 – 6.8	1.8	2.0	Yes
742	5/1/2008 – 12/1/2011	Approved	30	<1.8 – 2	<1.8	1.0	Yes
743	4/16/2008 – 12/1/2011	Approved	30	<1.8 – 7.8	1.8	2.0	Yes

The standard for approved shellfish growing waters is fecal coliform geometric mean not greater than 14 organisms/100 ml and an estimate of the 90th percentile not greater than 43 organisms/100 ml. The above table shows bacteriological results in relation to program standards.

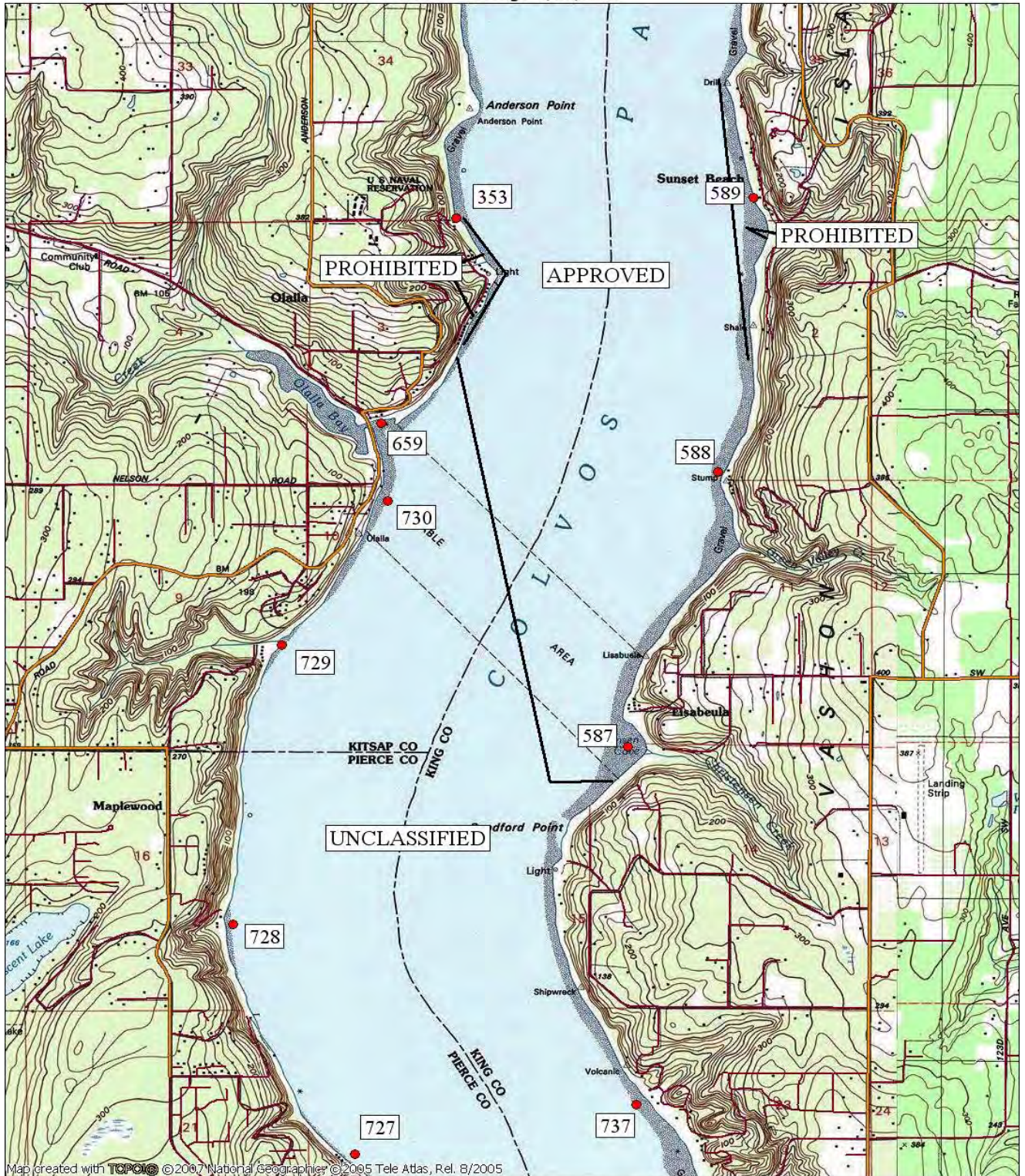


Map created with  © 2007 National Geographic, © 2005 Tele Atlas, R12672005

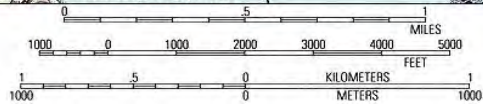


TN MN 17°

01/29/10



Map created with TOPOIC © 2007 National Geographic © 2005 Tele Atlas, Rel. 8/2005



TN MN
17°
01/29/10



Map created with **TOPOLIC** © 2008 National Geographic

