

Washington State Department of Health Office of Shellfish and Water Protection

Annual Growing Area Review

PREPARED BY: Jule Schultz
AREA: Dungeness Bay
YEAR ENDING: December 31, 2011
CLASSIFICATION: Conditionally Approved, Approved, Prohibited

Activities in the Growing Area in 2011

The Dungeness Bay growing area was sampled 12 times in 2011 using the Systematic Random Sampling method. Improvements in water quality resulted in the classification upgrade, from Prohibited to Conditionally Approved, of 424 acres at Stations 104, 105, 113, and 114. The Conditionally Approved portion of the growing area was closed from November 1st to January 31st. The Dungeness Clean Water Work Group continues to meet quarterly.

Analytical Results Of Water Samples

Table 1 shows the results of stations in the Conditionally Approved portion of the growing area while in Open status. All Conditionally Approved stations meet NSSP standard, although Station 114 is Concerned. Table 2 shows the results of all Conditionally Approved stations while in Closed status and all Approved stations.

Change In Actual Pollution Sources That Impact The Growing Area

We currently have no information indicating that the area has new sources of pollution.

Classification Status

- Well within the classification standards
- Meets standards, but some concerns
- Meets standards, but threatened with downgrade in classification
- Fails to meet current classification standards

Remarks and Recommendations

All stations meet the water quality standards for the existing classifications. Matriotti Creek and Lotzgezell Creek are tributaries to the Dungeness River and on the 303d list for fecal coliform.

**Washington State Department of Health
Office of Shellfish and Water Protection**

Annual Growing Area Review

Management Plan Evaluation:

1. Have all parties involved complied with the conditions of the management plan..... Yes
2. Has reporting been adequate to manage the conditional area Yes
3. Does the area consistently meet approved area criteria when it is open for harvest..... Yes
4. Has a field inspection of critical pollution sources been conducted Yes

TABLE 1

Data Summary of Conditional Approved Stations in Open Status

SUMMARY OF MARINE WATER DATA (SRS)Growing Area: **DUNGENESS BAY**Classification: **Conditionally Approved**From **03/17/2008** To **10/18/2011****FECAL COLIFORM ORGANISMS/100 ML**

Station Number	Classification	Number of Samples	Range	Geometric Mean	Est. 90th Percentile	Meets Std.
104	Conditionally Approved	31	1.7 - 49.0	4.3	15.0	Yes
105	Conditionally Approved	30	1.7 - 49.0	4.6	16.0	Yes
106	Conditionally Approved	31	1.7 - 49.0	3.5	13.0	Yes
107	Conditionally Approved	31	1.7 - 49.0	3.5	12.0	Yes
108	Conditionally Approved	31	1.7 - 33.0	4.3	15.0	Yes
109	Conditionally Approved	31	1.7 - 79.0	2.5	7.0	Yes
110	Conditionally Approved	31	1.7 - 31.0	2.6	7.0	Yes
111	Conditionally Approved	31	1.7 - 49.0	3.0	9.0	Yes
112	Conditionally Approved	31	1.7 - 130.0	2.8	11.0	Yes
113	Conditionally Approved	31	1.7 - 49.0	3.8	14.0	Yes
114	Conditionally Approved	31	1.7 - 540.0	4.0	22.0	Yes

All tides information is presented

The standard for approved shellfish growing waters is fecal coliform geometric mean not greater than 14 organisms/100 ml and an estimate of the 90th percentile not greater than 43 organisms/100 ml. The above table shows bacteriological results in relation to program standards.

† All samples have been verified.

TABLE 2

Data Summary of Conditionally Approved Stations in Closed Status

SUMMARY OF MARINE WATER DATA (SRS)Growing Area: **DUNGENESS BAY**Classification: **Conditionally Approved**From **01/01/2008** To **12/31/2011****FECAL COLIFORM ORGANISMS/100 ML**

Station Number	Classification	Number of Samples	Range	Geometric Mean	Est. 90th Percentile	Meets Std.
104	Conditionally Approved	10	4.5 - 79.0	18.1	82.0	*N/A
105	Conditionally Approved	11	2.0 - 130.0	18.6	108.0	*N/A
106	Conditionally Approved	11	4.5 - 79.0	19.0	54.0	*N/A
107	Conditionally Approved	11	1.7 - 79.0	14.9	78.0	*N/A
108	Conditionally Approved	11	1.7 - 110.0	24.3	101.0	*N/A
109	Conditionally Approved	11	2.0 - 49.0	12.0	38.0	*N/A
110	Conditionally Approved	11	1.7 - 540.0	17.5	164.0	*N/A
111	Conditionally Approved	11	2.0 - 170.0	19.3	112.0	*N/A
112	Conditionally Approved	11	1.7 - 110.0	13.9	72.0	*N/A
113	Conditionally Approved	11	1.7 - 79.0	10.6	52.0	*N/A
114	Conditionally Approved	11	1.7 - 13.0	3.7	10.0	*N/A

All tides information is presented

The standard for approved shellfish growing waters is fecal coliform geometric mean not greater than 14 organisms/100 ml and an estimate of the 90th percentile not greater than 43 organisms/100 ml. The above table shows bacteriological results in relation to program standards.

* N/A - SRS criteria require a minimum of 30 samples from each station. *

† All samples have been verified.

TABLE 3

Data Summary of Approved Stations

SUMMARY OF MARINE WATER DATA (SRS)

Growing Area: **DUNGENESS BAY**

Classification: **Approved**

From **01/21/2009** To **11/07/2011**

FECAL COLIFORM ORGANISMS/100 ML

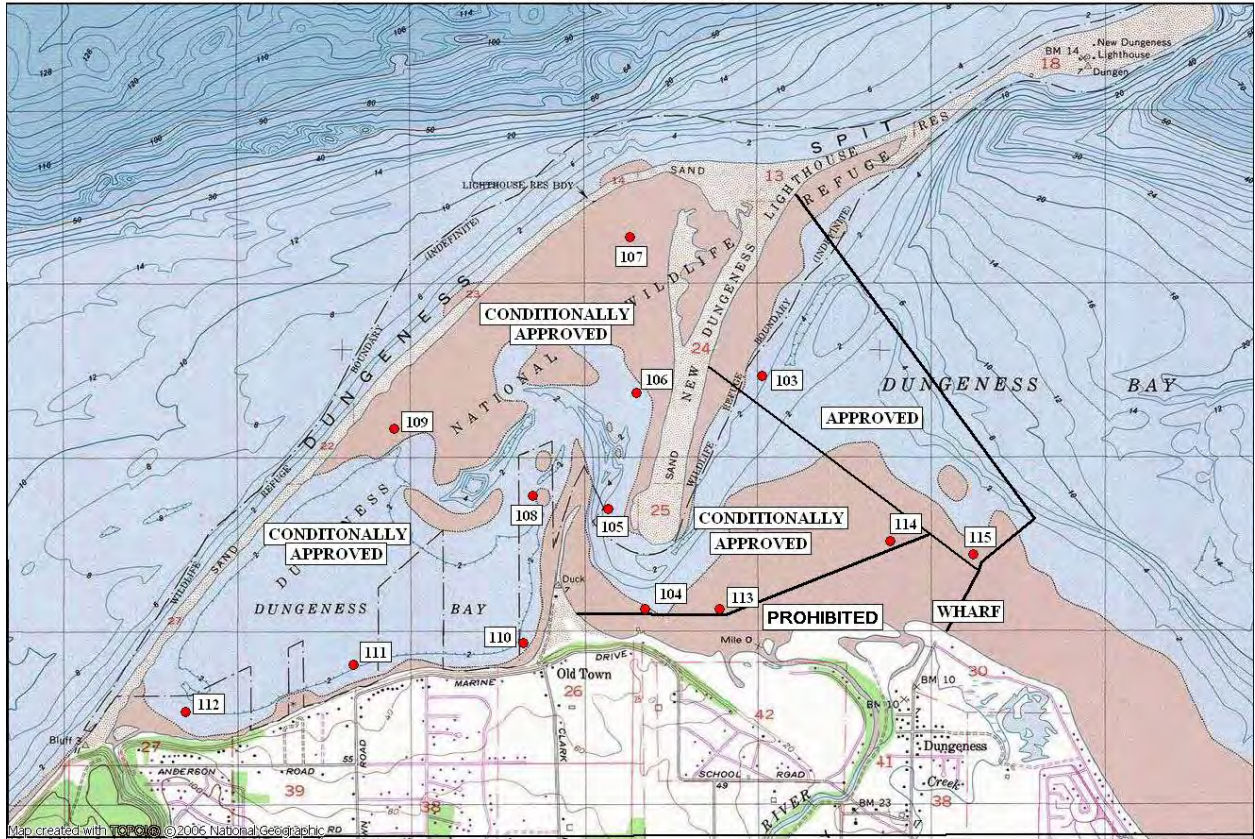
Station Number	Classification	Number of Samples	Range	Geometric Mean	Est. 90th Percentile	Meets Std.
103	Approved	32	1.7 - 23.0	3.5	10.0	Yes
115	Approved	30	1.7 - 27.0	3.6	13.0	Yes

All tides information is presented

The standard for approved shellfish growing waters is fecal coliform geometric mean not greater than 14 organisms/100 ml and an estimate of the 90th percentile not greater than 43 organisms/100 ml. The above table shows bacteriological results in relation to program standards.

MAP 1

DUNGENESS BAY 05/04/11



Map created with 10000 © 2006 National Geographic



0.0 0.5 1.0 miles
0.0 0.5 1.0 1.5 km

TIN MIN
17 1/2
05/04/11