

**WASHINGTON STATE DEPARTMENT OF HEALTH
OFFICE OF SHELLFISH AND WATER PROTECTION**

ANNUAL GROWING AREA REVIEW

PREPARED BY: Jerry Lukes, Environmental Specialist

AREA: Hood Canal #1

YEAR ENDING: December 31, 2008

CLASSIFICATION: Approved, Prohibited

ACTIVITIES IN THE GROWING AREA IN 2008:

Samples were collected 6 times from the growing area during the year using the systematic random sampling method. Two failing on-site systems were repaired within the growing area boundaries. Squamish and Coon Bay marinas were evaluated during 2008. A re-evaluation of the Port Gamble WWTP resulted in a slight reduction of the shellfish closure zone radius around the outfall. OSWP has been in consultation with WDOT on design of dock improvements at Lofall to accommodate passenger ferry service during a six week closure of the Hood Canal Bridge in 2009.

ANALYTICAL RESULTS OF WATER SAMPLES:

Table #1 summarizes the results of all samples collected from the area. This summary shows that all stations in the area pass the NSSP water quality standard.

CHANGE IN ACTUAL POLLUTION SOURCES THAT IMPACT THE GROWING AREA:

We currently have no information indicating that the area has new sources of pollution.

CLASSIFICATION STATUS:

- Well within the classification standards
- Meets standards but some concerns
- Meets standards but threatened with a downgrade in classification
- Fails to meet classification standards

REMARKS AND RECOMMENDATIONS:

Table #1 shows that all stations meet the NSSP water quality standards for approved classification and the area is correctly classified. An unnamed stream near station #38 is on the 303D list for fecal coliform.

TABLE 1**SUMMARY OF MARINE WATER DATA (SRS)**Growing Area: **HOOD CANAL #1**Classification: **Approved,Prohibited,Unclassified**From **12/08/2003** To **11/17/2008****FECAL COLIFORM ORGANISMS/100 ML**

Station Number	Classification	Number of Samples	Range	Geometric Mean	Est. 90th Percentile	Meets Std.
16	Approved	31	1.7 - 4.5	1.7	2.0	Yes
17	Approved	30	1.7 - 13.0	1.8	2.0	Yes
18	Approved	31	1.7 - 4.5	1.7	2.0	Yes
19	Approved	31	1.7 - 1.7	1.7	1.0	Yes
20	Approved	30	1.7 - 2.0	1.7	1.0	Yes
21	Approved	31	1.7 - 13.0	2.0	3.0	Yes
22	Approved	31	1.7 - 46.0	1.9	4.0	Yes
23	Approved	31	1.7 - 2.0	1.7	1.0	Yes
25	Approved	31	1.7 - 7.8	1.8	2.0	Yes
26	Approved	31	1.7 - 4.5	1.8	2.0	Yes
27	Approved	31	1.7 - 2.0	1.7	1.0	Yes
28	Approved	31	1.7 - 17.0	2.0	4.0	Yes
29	Approved	31	1.7 - 17.0	1.8	3.0	Yes
30	Approved	31	1.7 - 4.5	1.7	2.0	Yes
31	Approved	31	1.7 - 2.0	1.7	1.0	Yes
32	Approved	31	1.7 - 1.7	1.7	1.0	Yes
33	Approved	31	1.7 - 4.5	1.7	2.0	Yes
34	Approved	31	1.7 - 11.0	1.8	3.0	Yes
35	Approved	31	1.7 - 4.5	1.7	2.0	Yes
36	Approved	31	1.7 - 4.5	1.8	2.0	Yes
37	Approved	31	1.7 - 7.8	2.0	3.0	Yes
38	Approved	31	1.7 - 2.0	1.7	1.0	Yes
39	Approved	31	1.7 - 4.5	1.8	2.0	Yes
40	Approved	31	1.7 - 2.0	1.7	1.0	Yes
41	Approved	31	1.7 - 79.0	2.0	4.0	Yes
43	Approved	31	1.7 - 4.5	1.7	2.0	Yes
44	Approved	31	1.7 - 4.5	1.7	2.0	Yes
45	Approved	31	1.7 - 4.5	1.8	2.0	Yes
46	Approved	31	1.7 - 2.0	1.7	1.0	Yes
47	Approved	31	1.7 - 2.0	1.7	1.0	Yes
48	Approved	31	1.7 - 23.0	1.9	3.0	Yes
49	Approved	31	1.7 - 4.5	1.7	2.0	Yes
50	Approved	31	1.7 - 4.5	1.7	2.0	Yes
52	Approved	31	1.7 - 2.0	1.7	1.0	Yes
53	Approved	31	1.7 - 4.5	1.8	2.0	Yes
54	Approved	31	1.7 - 4.5	1.8	2.0	Yes

TABLE 1 Continued

24	Prohibited	31	1.7 - 17.0	1.9	3.0	Yes
51	Unclassified	31	1.7 - 2.0	1.7	1.0	Yes
288	Approved	31	1.7 - 6.8	1.8	2.0	Yes
304	Approved	31	1.7 - 4.0	1.8	2.0	Yes
305	Approved	30	1.7 - 11.0	1.9	3.0	Yes
306	Approved	31	1.7 - 7.8	1.9	2.0	Yes

All tides information is presented

The standard for approved shellfish growing waters is fecal coliform geometric mean not greater than 14 organisms/100 ml and an estimate of the 90th percentile not greater than 43 organisms/100 ml. The above table shows bacteriological results in relation to program standards.

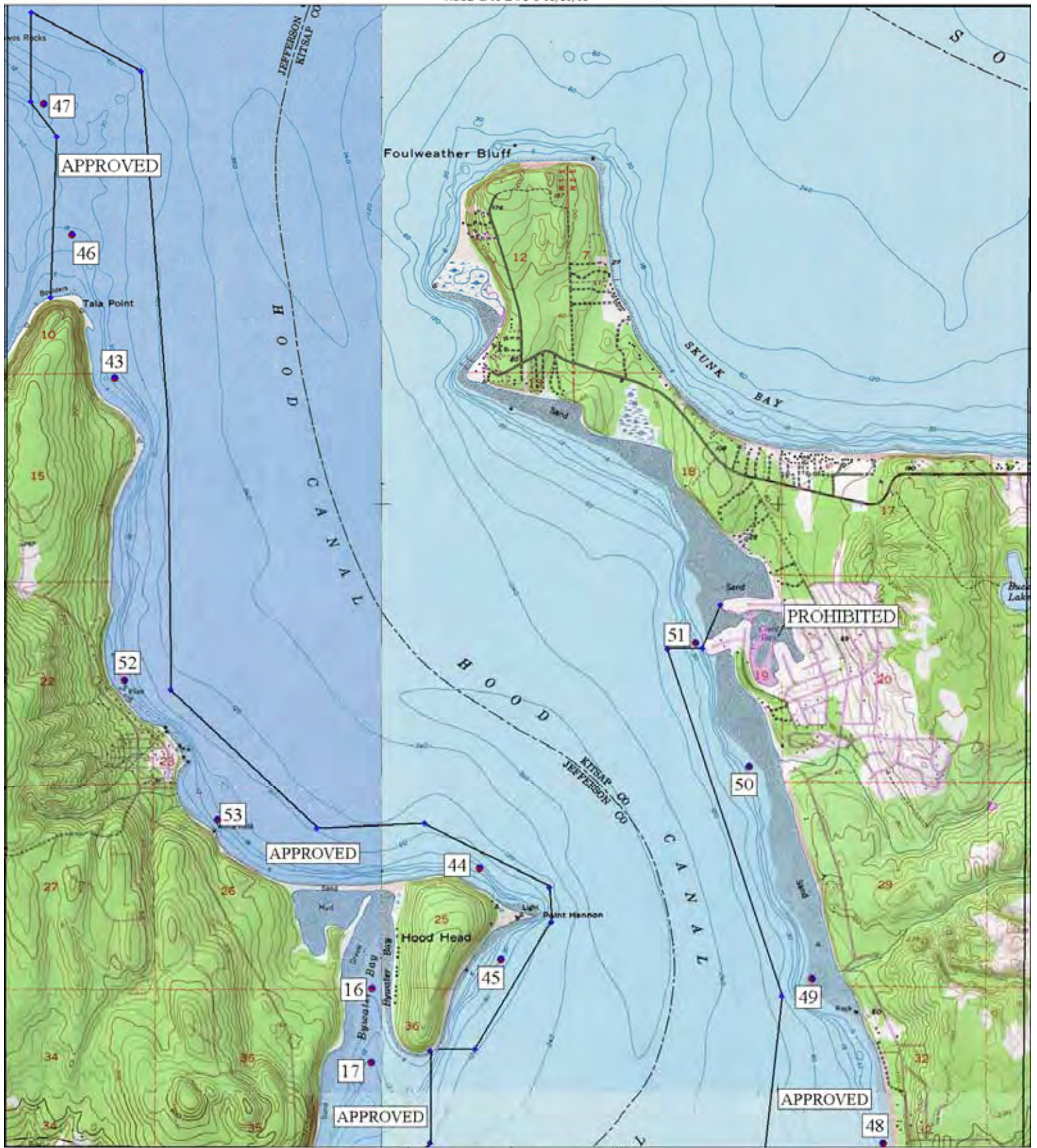
† All samples have been verified.



71° 10'



Printed from TOPYO ©2000 National Oceanic & Atmospheric Administration



TH 1/4" = 1 MI

1000 FEET 500 1000 METERS
Printed from TOPOI ©2000 National Geographic Holdings (www.topo.com)