

**WASHINGTON STATE DEPARTMENT OF HEALTH  
OFFICE OF SHELLFISH AND WATER PROTECTION**

**ANNUAL GROWING AREA REVIEW**

**PREPARED BY:** Jerry Lukes, Environmental Specialist

**AREA:** Jamestown

**YEAR ENDING:** December 31, 2008

**CLASSIFICATION:** Approved, Unclassified

**ACTIVITIES IN THE GROWING AREA IN 2008:**

Samples were collected from the growing area 8 times during the year using the systematic random sampling method. Following the 2007 shoreline survey, additional tributary samples were taken from Cassalery Creek and Golden Slough in 2008 to determine their impact on the growing area. Closure zones were created around both discharges.

**ANALYTICAL RESULTS OF WATER SAMPLES:**

Table #1 summarizes the results of all samples collected from the area. This summary shows that the approved stations in the area pass the NSSP water quality standard. Stations 102 and 182 have estimated 90<sup>th</sup> percentiles of 21 and 29 respectively. The information from station 182 is based on 38 samples. Table 2, which shows the last 30 samples has a 90<sup>th</sup> percentile of 33.

**CHANGE IN ACTUAL POLLUTION SOURCES THAT IMPACT THE GROWING AREA:**

We have established two small closures around the discharges of Cassalery Creek and Golden Slough.

**CLASSIFICATION STATUS:**

- Well within the classification standards
- Meets standards but some concerns
- Meets standards but threatened with a downgrade in classification
- Fails to meet classification standards

**REMARKS AND RECOMMENDATIONS:**

Table #1 shows that the approved stations meet the NSSP water quality standards for an approved classification and the area is correctly classified. Golden Sands Slough, Cassalery Creek, and Copper Creek are on the 303D list for fecal coliform. Station #193 was added and one sample has been collected at that station.

## TABLE 1

### SUMMARY OF MARINE WATER DATA (SRS)

Growing Area: JAMESTOWN

Classification: **Approved,Unclassified**

From **02/19/2004** To **11/03/2008**

**FECAL COLIFORM ORGANISMS/100 ML**

---

| Station Number | Classification | Number of Samples | Range      | Geometric Mean | Est. 90th Percentile | Meets Std. |
|----------------|----------------|-------------------|------------|----------------|----------------------|------------|
| 99             | Approved       | 30                | 1.7 - 23.0 | 2.5            | 6.0                  | Yes        |
| 100            | Approved       | 30                | 1.7 - 33.0 | 2.6            | 6.0                  | Yes        |
| 101            | Approved       | 30                | 1.7 - 79.0 | 4.2            | 19.0                 | Yes        |
| 102            | Approved       | 30                | 1.7 - 49.0 | 5.0            | 21.0                 | Yes        |

---

All tides information is presented

The standard for approved shellfish growing waters is fecal coliform geometric mean not greater than 14 organisms/100 ml and an estimate of the 90th percentile not greater than 43 organisms/100 ml. The above table shows bacteriological results in relation to program standards.

## TABLE 2

### SUMMARY OF MARINE WATER DATA (SRS)

Growing Area: JAMESTOWN

Classification:

From 10/12/2005 To 11/18/2008

### FECAL COLIFORM ORGANISMS/100 ML

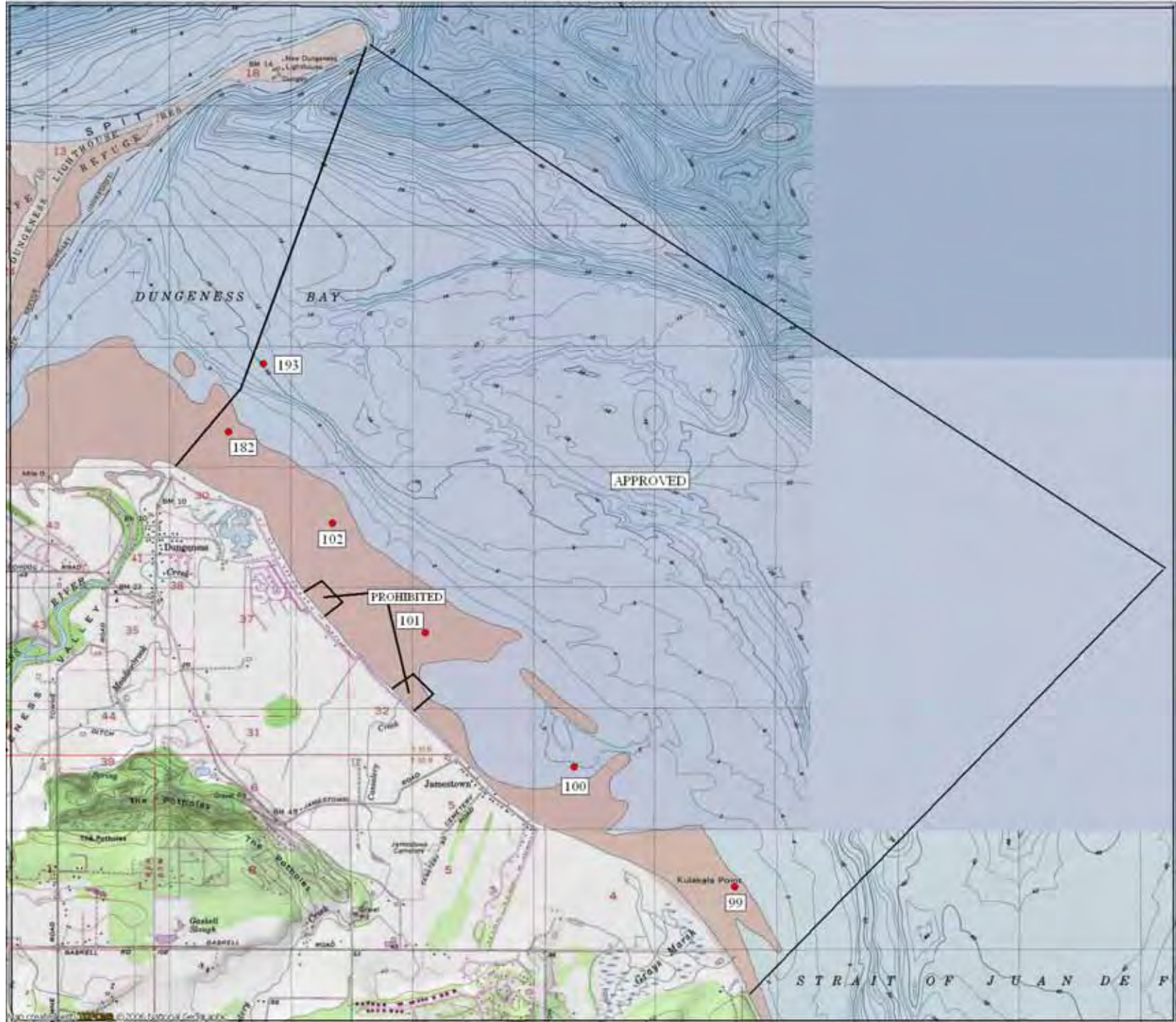
---

| Station Number | Classification | Number of Samples | Range       | Geometric Mean | Est. 90th Percentile | Meets Std. |
|----------------|----------------|-------------------|-------------|----------------|----------------------|------------|
| 182            | Approved       | 30                | 1.7 - 240.0 | 5.3            | 33.0                 | Yes        |

---

All tides information is presented

The standard for approved shellfish growing waters is fecal coliform geometric mean not greater than 14 organisms/100 ml and an estimate of the 90th percentile not greater than 43 organisms/100 ml. The above table shows bacteriological results in relation to program standards.



# Station 182 Jamestown

