

Washington State Department of Health Office of Shellfish and Water Protection

Annual Growing Area Review

PREPARED BY: Jule Schultz
AREA: Lummi Bay
YEAR ENDING: December 31, 2011
CLASSIFICATION: Approved

Activities In The Growing Area in 2011

The Lummi Bay growing area was sampled six times in 2011 using the Systematic Random Sampling method. The northern portion of Lummi Bay was closed once for two days due to flooding along the Nooksack River.

Analytical Results Of Water Samples

Table 1 summarizes a minimum of the most recent 30 samples from the Lummi Bay growing area. All stations meet NSSP criteria for an Approved classification.

Change In Actual Pollution Sources That Impact The Growing Area

We have no new information about pollution sources in the Lummi Bay growing area.

Classification Status

- Well within the classification standards
- Meets standards, but some concerns
- Meets standards, but threatened with downgrade in classification
- Fails to meet current classification standards

Remarks and Recommendations

Lummi Bay is correctly classified.

TABLE 1

SUMMARY OF MARINE WATER DATA (SRS)

Growing Area: **LUMMI BAY**

Classification: **Approved**

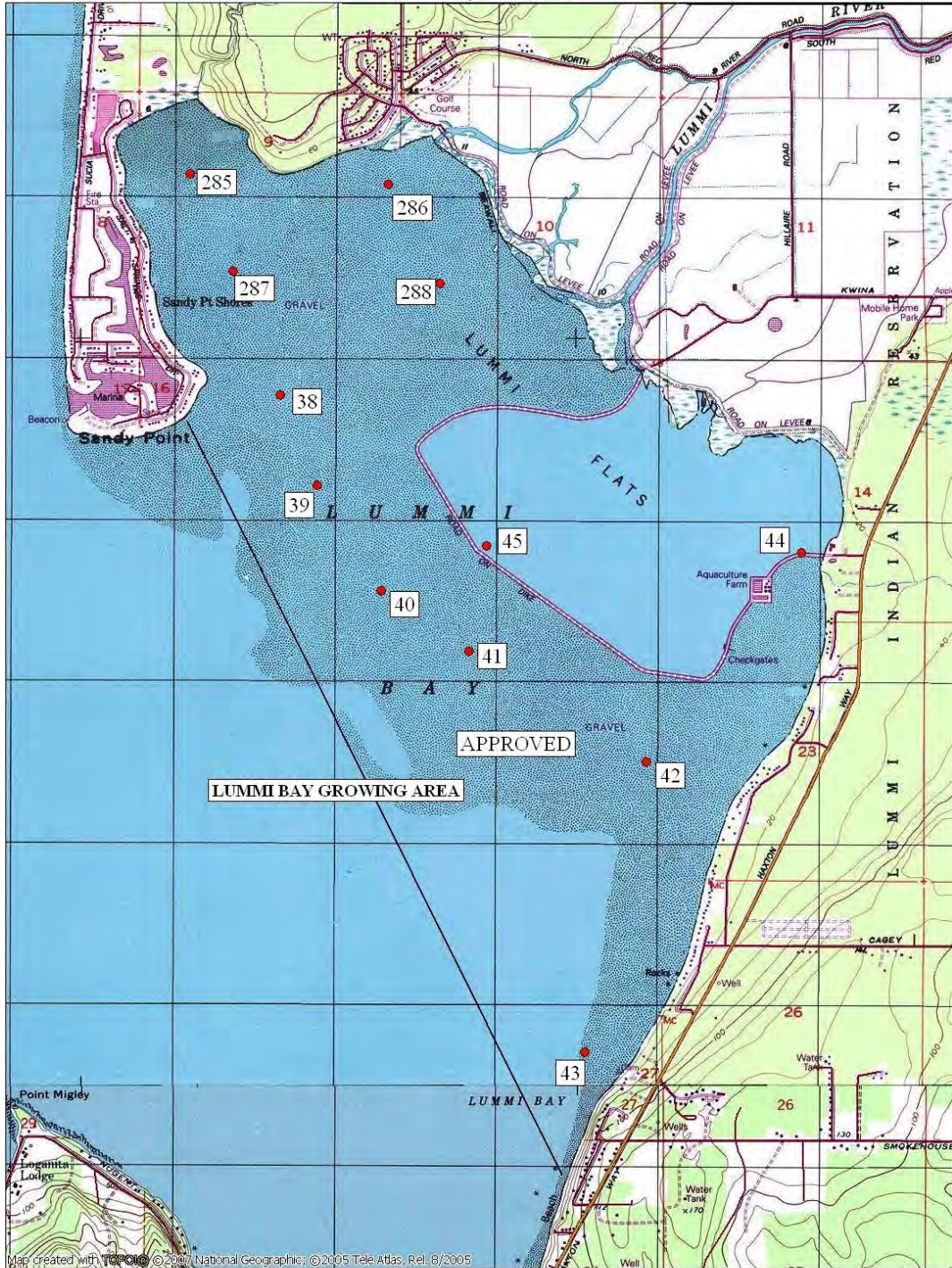
From **10/11/2006** To **12/31/2011**

FECAL COLIFORM ORGANISMS/100 ML

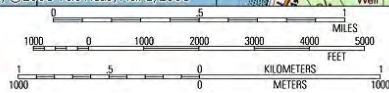
Station Number	Classification	Number of Samples	Range	Geometric Mean	Est. 90th Percentile	Meets Std.
38	Approved	31	1.7 - 33.0	2.4	6.0	Yes
39	Approved	31	1.7 - 33.0	2.3	6.0	Yes
40	Approved	31	1.7 - 7.8	2.1	3.0	Yes
41	Approved	30	1.7 - 11.0	2.3	4.0	Yes
42	Approved	31	1.7 - 33.0	2.6	7.0	Yes
43	Approved	30	1.7 - 11.0	2.2	4.0	Yes
44	Approved	31	1.7 - 79.0	3.2	15.0	Yes
45	Approved	31	1.7 - 2,400.0	2.5	15.0	Yes
285	Approved	31	1.7 - 49.0	2.7	8.0	Yes
286	Approved	31	1.7 - 46.0	3.6	12.0	Yes
287	Approved	31	1.7 - 49.0	2.4	7.0	Yes
288	Approved	31	1.7 - 79.0	2.7	9.0	Yes

All tides information is presented

The standard for approved shellfish growing waters is fecal coliform geometric mean not greater than 14 organisms/100 ml and an estimate of the 90th percentile not greater than 43 organisms/100 ml. The above table shows bacteriological results in relation to program standards.



Map created with TOPOIG © 2007 National Geographic, © 2005 Tele Atlas, Rel. B/2005



TN MN
17 1/2
01/29/10