

# Washington State Department of Health Office of Shellfish and Water Protection

## Annual Growing Area Review

**PREPARED BY:** Clyde Bill  
**AREA:** Nahcotta  
**YEAR ENDING:** December 31, 2011  
**CLASSIFICATION:** Approved, Prohibited

### Activities in the Growing Area in 2011

The Nahcotta growing area was sampled six times using the Systematic Random Sampling method.

### Analytical Results of Water Samples

Table 1 summarizes the results of the 30 most recent water samples collected from Nahcotta. This summary shows that all stations in the area pass NSSP water quality standards.

### Change in Actual Pollution Sources that Impact the Growing Area

We currently have no information indicating that the Nahcotta growing area has new sources of pollution.

### Classification Status

- Well within the classification standards
- Meets standards, but some concerns
- Meets standards, but threatened with downgrade in classification
- Fails to meet current classification standards

### Remarks and Recommendations

Table 1 show that all stations in the Nahcotta growing area meet NSSP water quality standards for an Approved classification and that the area is correctly classified.

TABLE 1

**SUMMARY OF MARINE WATER DATA (SRS)**

Growing Area: **NAHCOTTA**

Classification: **Approved**

From **08/09/2006** To **12/13/2011**

**FECAL COLIFORM ORGANISMS/100 ML**

<b>Station Number</b>	<b>Classification</b>	<b>Number of Samples</b>	<b>Range</b>	<b>Geometric Mean</b>	<b>Est. 90th Percentile</b>	<b>Meets Std.</b>
163	Approved	31	1.7 - 7.8	2.0	3.0	Yes
164	Approved	31	1.7 - 7.8	1.8	2.0	Yes
165	Approved	30	1.7 - 4.5	1.8	2.0	Yes
166	Approved	31	1.7 - 4.0	1.7	2.0	Yes
167	Approved	31	1.7 - 4.5	1.9	2.0	Yes
168	Approved	30	1.7 - 7.8	1.9	3.0	Yes
169	Approved	31	1.7 - 7.8	1.9	3.0	Yes
170	Approved	31	1.7 - 6.8	2.1	3.0	Yes
171	Approved	31	1.7 - 23.0	2.3	5.0	Yes
172	Approved	31	1.7 - 7.8	1.9	2.0	Yes
173	Approved	32	1.7 - 7.8	1.8	2.0	Yes
174	Approved	32	1.7 - 4.5	1.7	2.0	Yes
175	Approved	32	1.7 - 4.5	1.9	2.0	Yes
176	Approved	32	1.7 - 4.5	1.7	2.0	Yes
177	Approved	32	1.7 - 7.8	1.9	2.0	Yes
178	Approved	32	1.7 - 7.8	2.0	3.0	Yes
179	Approved	32	1.7 - 4.5	1.8	2.0	Yes
180	Approved	32	1.7 - 4.5	1.8	2.0	Yes
181	Approved	31	1.7 - 2.0	1.7	1.0	Yes
182	Approved	32	1.7 - 4.5	1.9	2.0	Yes
183	Approved	34	1.7 - 7.8	1.9	2.0	Yes
184	Approved	31	1.7 - 11.0	2.0	3.0	Yes
185	Approved	31	1.7 - 13.0	1.9	3.0	Yes
186	Approved	31	1.7 - 7.8	1.8	2.0	Yes
200	Approved	32	1.7 - 13.0	2.7	6.0	Yes
201	Approved	32	1.7 - 7.8	2.3	4.0	Yes

TABLE 1 (continued)

Station Number	Classification	Number of Samples	Range	Geometric Mean	Est. 90th Percentile	Meets Std.
212	Approved	12	1.7 - 13.0	2.9	7.0	*N/A
213	Approved	12	1.7 - 11.0	2.5	5.0	*N/A
217	Approved	5	1.7 - 4.5	2.1	3.0	*N/A

All tides information is presented

The standard for approved shellfish growing waters is fecal coliform geometric mean not greater than 14 organisms/100 ml and an estimate of the 90th percentile not greater than 43 organisms/100 ml. The above table shows bacteriological results in relation to program standards.

\* N/A - SRS criteria require a minimum of 30 samples from each station. \*

† All samples have been verified.



Map created with TIGER/Line® 2002. All rights reserved. © 2005 Tele Atlas, Inc. All rights reserved. 01/29/10

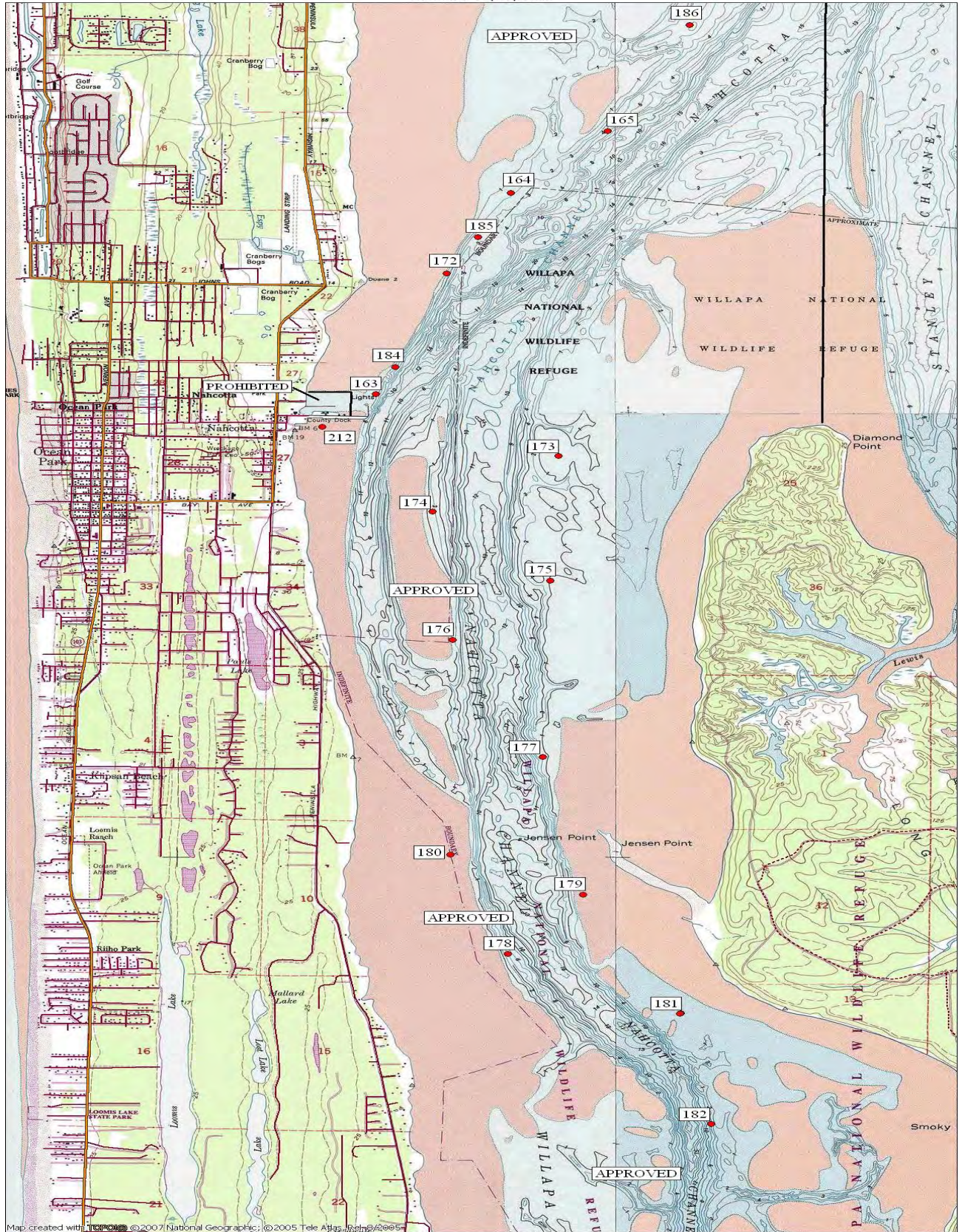
NATIONAL GEOGRAPHIC

0 1000 2000 3000 4000 5000  
METERS

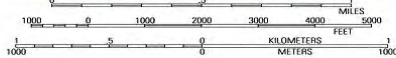
0 1000 2000 3000 4000 5000  
FEET

17°

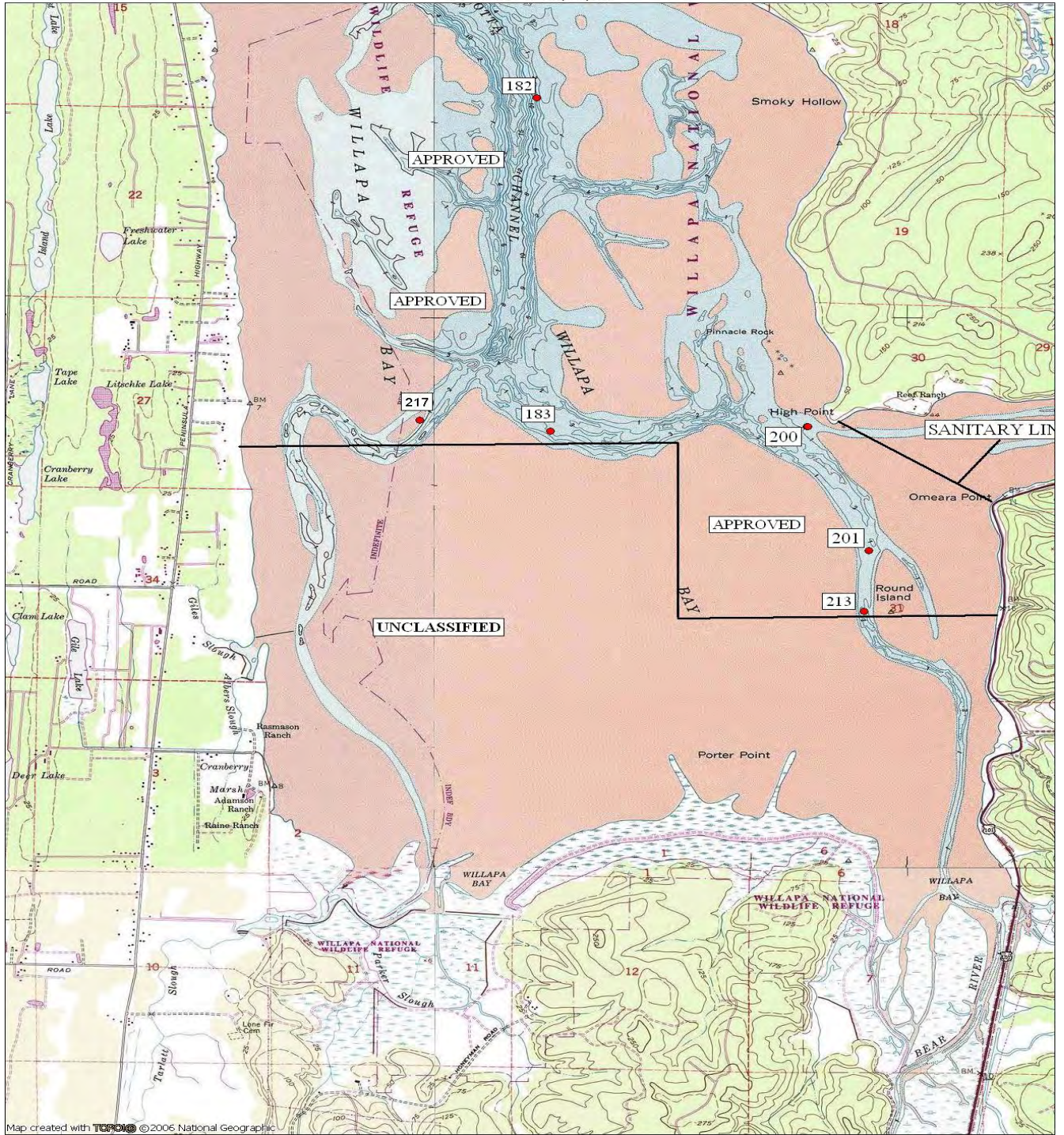
01/29/10



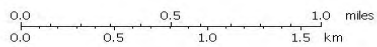
Map created with TOPOGRAPHIC ©2007 National Geographic, ©2005 Tele Atlas, Rel. 02/2005



TN MN  
17°  
01/29/10



Map created with TOPO! © 2006 National Geographic



TN MN  
17 1/2  
03/03/11