

Washington State Department of Health Office of Shellfish and Water Protection

Annual Growing Area Review

PREPARED BY: Jule Schultz
AREA: Naselle River
YEAR ENDING: December 31, 2011
CLASSIFICATION: Approved, Unclassified

Activities In The Growing Area in 2011

The Naselle River growing area was sampled six times using the Systematic Random Sampling Method.

Analytical Results Of Water Samples

Table 1 summarizes the most recent 30 samples in the growing area. All stations in the Approved section of the growing area meet NSSP standards for an Approved classification. Stations 152, 156, 157, 160, 161, and 162 are Concerned. Station 187 is Threatened. Table 2 shows the 30 most recent individual samples at Station 187.

Change In Actual Pollution Sources That Impact The Growing Area

We have no new information regarding pollution sources in the Naselle River growing area.

Classification Status

- Well within the classification standards
- Meets standards, but some concerns
- Meets standards, but threatened with downgrade in classification
- Fails to meet current classification standards

Remarks and Recommendations

Stations 154 and 155 meet NSSP standards for an Approved classification and can be classified as Approved.

TABLE 1

SUMMARY OF MARINE WATER DATA (SRS)

Growing Area: **NASELLE RIVER**

Classification: **Approved,Unclassified**

From **08/09/2006** To **12/31/2011**

FECAL COLIFORM ORGANISMS/100 ML

Station Number	Classification	Number of Samples	Range	Geometric Mean	Est. 90th Percentile	Meets Std.
147	Approved	31	1.7 - 17.0	2.1	4.0	Yes
148	Approved	31	1.7 - 23.0	2.1	4.0	Yes
149	Approved	31	1.7 - 23.0	3.1	8.0	Yes
150	Approved	31	1.7 - 22.0	2.5	6.0	Yes
151	Approved	31	1.7 - 7.8	2.0	3.0	Yes
152	Approved	31	1.7 - 49.0	4.6	20.0	Yes
153	Approved	30	1.7 - 49.0	3.8	14.0	Yes
154	Unclassified	30	1.7 - 170.0	6.6	38.0	Yes
155	Unclassified	31	1.7 - 49.0	5.2	21.0	Yes
156	Approved	31	1.7 - 79.0	4.9	22.0	Yes
157	Approved	31	1.7 - 49.0	5.7	24.0	Yes
158	Approved	31	1.7 - 49.0	4.4	17.0	Yes
159	Approved	31	1.7 - 33.0	4.6	18.0	Yes
160	Approved	31	1.7 - 79.0	4.9	23.0	Yes
161	Approved	31	1.7 - 49.0	5.8	29.0	Yes
162	Approved	31	1.7 - 49.0	6.6	28.0	Yes
187	Approved	31	1.7 - 79.0	6.7	32.0	Yes

All tides information is presented

The standard for approved shellfish growing waters is fecal coliform geometric mean not greater than 14 organisms/100 ml and an estimate of the 90th percentile not greater than 43 organisms/100 ml. The above table shows bacteriological results in relation to program standards.

† All samples have been verified.

TABLE 2
Summary of Threatened Stations

**SUMMARY OF SHELLFISH GROWING AREAS
WATER QUALITY STUDY RESULTS**

Growing Area: **NASELLE RIVER**

Sampling Station Number: **187**

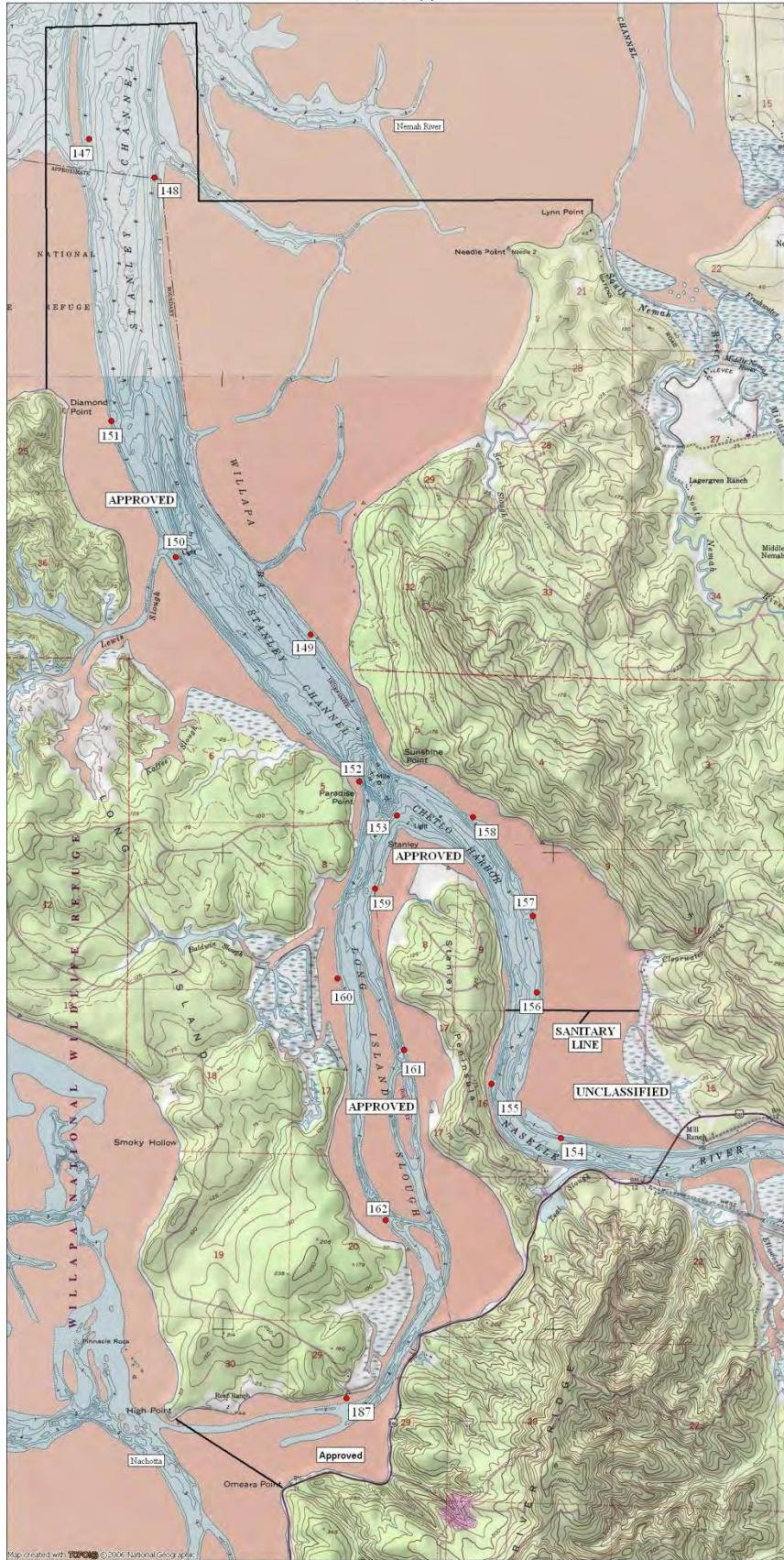
Classification: **Approved**

Sample Date	Sample Time	Tide	Fcoli/100ml	Temperature	Salinity
08/09/2006	14:01	Flood	33	18	28
10/19/2006	10:59	Flood	22	12	25
02/15/2007	11:18	Flood	2	8	15
04/26/2007	10:37	Flood	2	11	12
06/13/2007	14:06	Ebb	49	17	22
08/15/2007	13:48	Flood	4.5	20	25
09/27/2007	13:03	Flood	6.8	15	25
10/30/2007	08:41	Ebb	22	12	15
01/24/2008	13:36	Flood	7.8	4	15
03/19/2008	13:48	Flood	1.7	9	10
05/21/2008	15:49	Flood	22	17	15
07/30/2008	14:10	Flood	23	19	20
09/16/2008	15:11	Flood	1.7	20	25
10/15/2008	14:52	Flood	4.5	14	20
04/07/2009	13:12	Flood	1.7	12	12
06/03/2009	12:35	Ebb	11	19	18
08/20/2009	15:37	Ebb	22	19	25
10/07/2009	12:40	Flood	1.7	15	30
12/15/2009	11:14	Flood	33	4	16
02/10/2010	11:32	Ebb	1.7	10	14
04/13/2010	13:05	Flood	4.5	12	12
06/24/2010	12:50	Flood	7.8	19	15
08/25/2010	13:44	Flood	4.5	21	25
10/05/2010	12:55	Flood	2	17	19
12/21/2010	12:13	Flood	23	6	12
02/02/2011	12:12	Flood	1.7	8	9
04/14/2011	12:22	Ebb	1.7	11	10
06/15/2011	13:26	Flood	79	16	14
08/24/2011	12:28	Ebb	4.5	21	17
10/12/2011	12:31	Flood	23	15	22
12/13/2011	12:35	Flood	1.7	5	19

Number of Samples: 31
Geometric Mean: 6.7

Range: 1.7 - 79
Estimated 90th Percentile: 32

† All samples have been verified.



Map created with TOPO 2.0 © 2006 National Geographic



0.0 0.5 1.0 miles
0.0 0.5 1.0 1.5 km

TN 1776
05/10/10