

# Washington State Department of Health Office of Shellfish and Water Protection

## Annual Growing Area Review

**PREPARED BY:** Jule Schultz  
**AREA:** Nemah River  
**YEAR ENDING:** December 31, 2011  
**CLASSIFICATION:** Approved, Unclassified

### Activities In The Growing Area in 2011

The Nemah River growing area was sampled six times using the Systematic Random Sampling method.

### Analytical Results Of Water Samples

Table 1 summarizes the most 30 recent marine water sampling results at each station in the Nemah River growing area. All Approved stations meet NSSP criteria for an Approved classification.

### Change In Actual Pollution Sources That Impact The Growing Area

We have no new information regarding pollution sources in the Nemah River growing area.

### Classification Status

- Well within the classification standards
- Meets standards, but some concerns
- Meets standards, but threatened with downgrade in classification
- Fails to meet current classification standards

### Remarks and Recommendations

The area is correctly classified.

TABLE 1

**SUMMARY OF MARINE WATER DATA (SRS)**

Growing Area: **NEMAH RIVER**

Classification: **Approved,Unclassified**

From **08/09/2006** To **12/31/2011**

**FECAL COLIFORM ORGANISMS/100 ML**

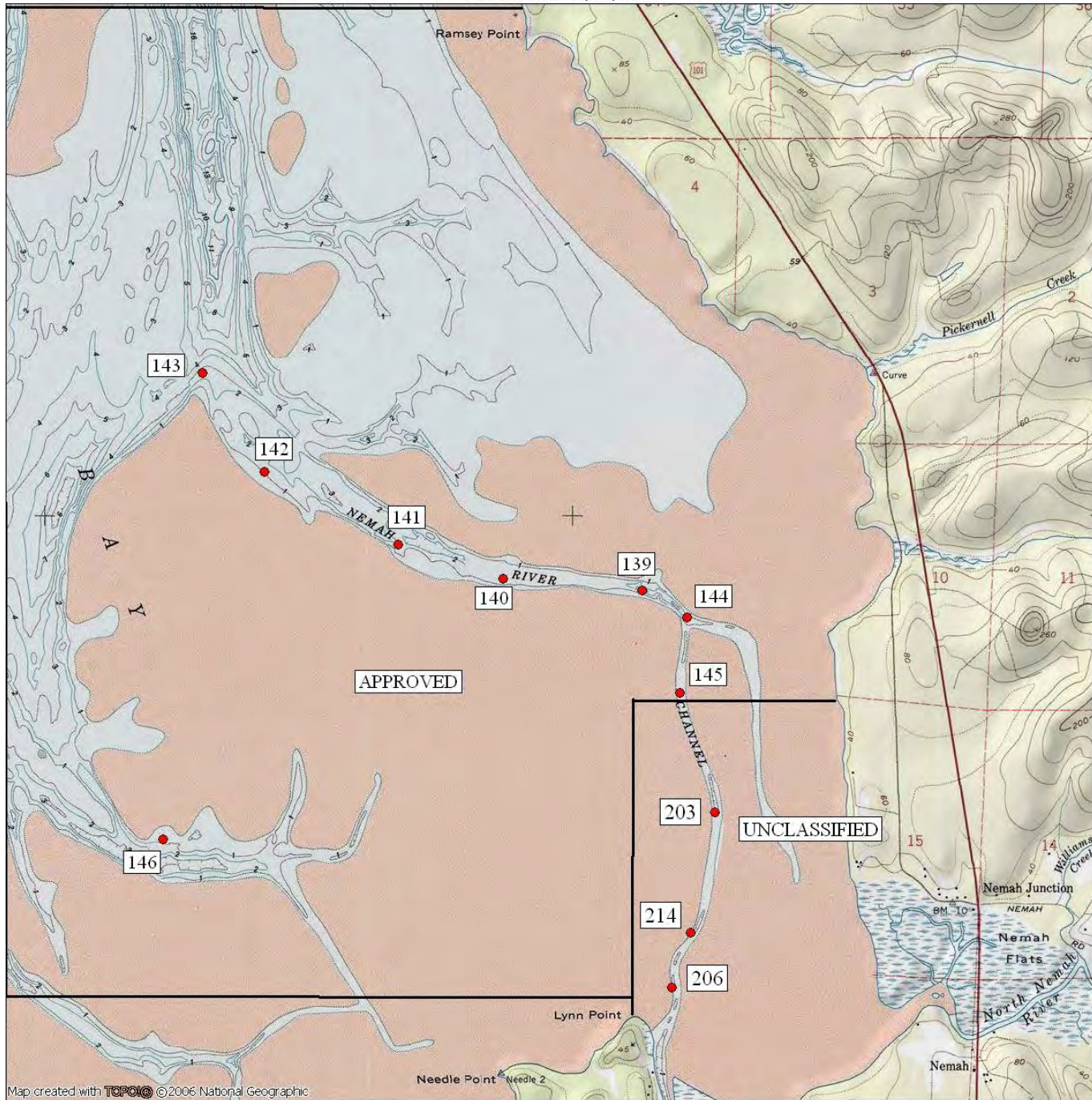
<b>Station Number</b>	<b>Classification</b>	<b>Number of Samples</b>	<b>Range</b>	<b>Geometric Mean</b>	<b>Est. 90th Percentile</b>	<b>Meets Std.</b>
139	Approved	31	1.7 - 33.0	3.0	8.0	Yes
140	Approved	31	1.7 - 14.0	2.3	4.0	Yes
141	Approved	31	1.7 - 4.5	1.8	2.0	Yes
142	Approved	31	1.7 - 13.0	2.0	3.0	Yes
143	Approved	31	1.7 - 7.8	1.9	2.0	Yes
144	Approved	31	1.7 - 49.0	3.9	14.0	Yes
145	Approved	30	1.7 - 33.0	3.2	9.0	Yes
146	Approved	30	1.7 - 6.8	2.1	3.0	Yes
203	Unclassified	28	1.7 - 49.0	5.0	16.0	*N/A
206	Unclassified	26	1.7 - 170.0	8.6	62.0	*N/A
214	Unclassified	7	1.7 - 31.0	5.1	23.0	*N/A

All tides information is presented

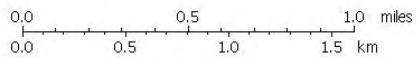
The standard for approved shellfish growing waters is fecal coliform geometric mean not greater than 14 organisms/100 ml and an estimate of the 90th percentile not greater than 43 organisms/100 ml. The above table shows bacteriological results in relation to program standards.

\* N/A - SRS criteria require a minimum of 30 samples from each station. \*

Nemah River 6/18/10



Map created with ©2006 National Geographic



TN MN  
17 1/2  
06/18/10