

Washington State Department of Health Office of Shellfish and Water Protection

Annual Growing Area Review

PREPARED BY: Jule Schultz
AREA: Point Partridge
YEAR ENDING: December 31, 2011
CLASSIFICATION: Approved, Unclassified

Activities In The Growing Area in 2011

The Point Partridge growing area was sampled 11 times using the Systematic Random Sampling method.

Analytical Results Of Water Samples

Table 1 summarizes the most recent 30 samples at stations in the Point Partridge growing area. All stations meet NSSP standards for an Approved classification. Stations 326 and 114 are Concerned.

Change In Actual Pollution Sources That Impact The Growing Area

We have no new information regarding pollution in the growing area.

Classification Status

- Well within the classification standards
- Meets standards, but some concerns
- Meets standards, but threatened with downgrade in classification
- Fails to meet current classification standards

Remarks and Recommendations

Continue to attempt to sample the new stations (336-338) to more accurately evaluate water quality near the harvest sites.

TABLE 1

SUMMARY OF MARINE WATER DATA (SRS)

Growing Area: **POINT PARTRIDGE**

Classification: **Approved,Unclassified**

From **02/04/2008** To **12/31/2011**

FECAL COLIFORM ORGANISMS/100 ML

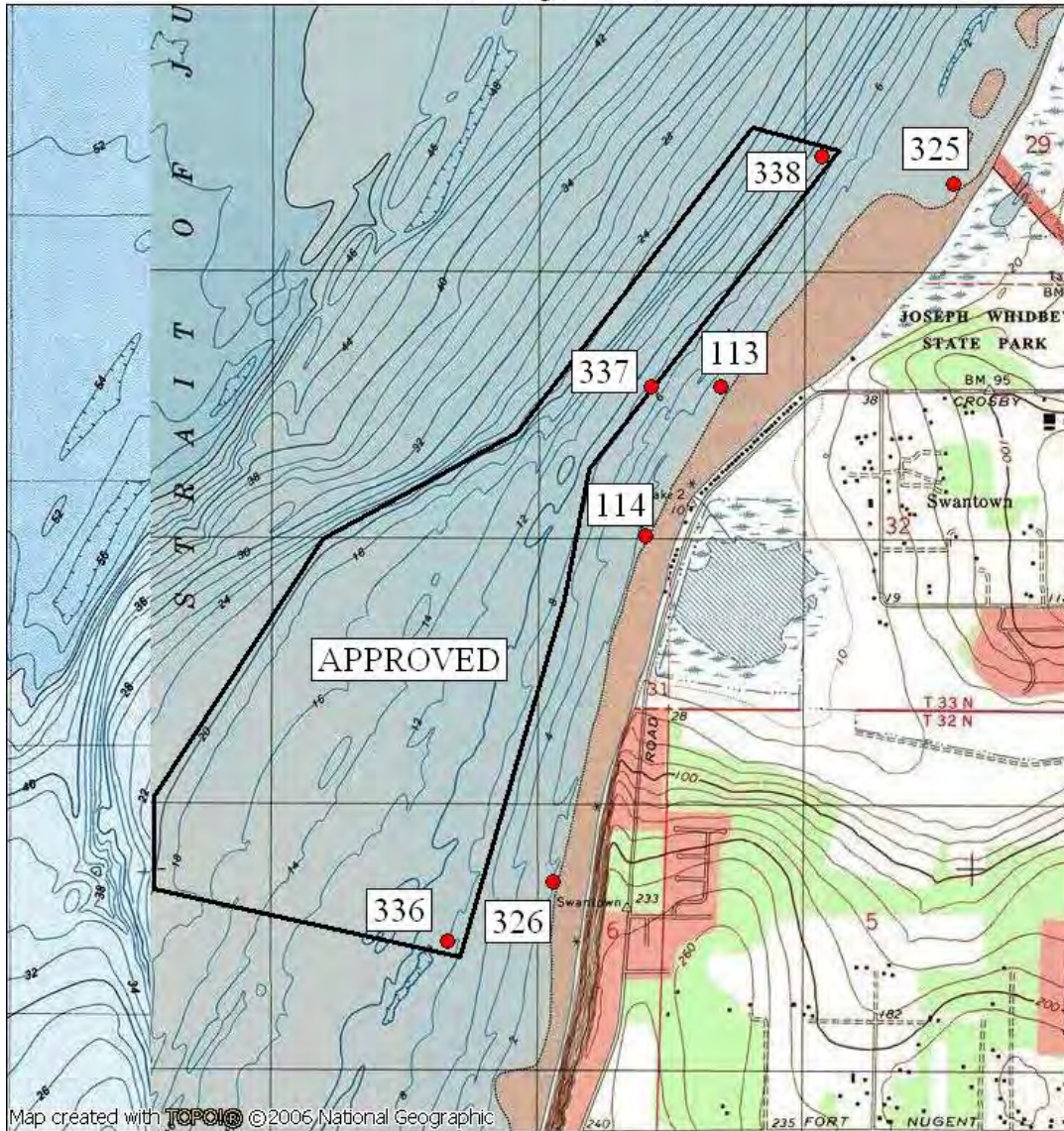
Station Number	Classification	Number of Samples	Range	Geometric Mean	Est. 90th Percentile	Meets Std.
113	Unclassified	35	1.7 - 49.0	3.4	10.0	Yes
114	Unclassified	34	1.7 - 170.0	4.3	20.0	Yes
325	Unclassified	35	1.7 - 79.0	2.4	7.0	Yes
326	Unclassified	30	1.7 - 920.0	3.6	21.0	Yes
336	Approved	2	1.7 - 1.7	1.7	1.0	*N/A
337	Approved	3	1.7 - 1.7	1.7	1.0	*N/A
338	Approved	3	1.7 - 4.0	2.3	4.0	*N/A

All tides information is presented

The standard for approved shellfish growing waters is fecal coliform geometric mean not greater than 14 organisms/100 ml and an estimate of the 90th percentile not greater than 43 organisms/100 ml. The above table shows bacteriological results in relation to program standards.

* N/A - SRS criteria require a minimum of 30 samples from each station. *

Point Partridge 02/29/12



0.0 0.5 1.0 miles
0.0 0.5 1.0 1.5 km

TN 17 1/2
02/29/12