

Washington State Department of Health Office of Shellfish and Water Protection

Annual Growing Area Review

PREPARED BY: Clyde Bill
AREA: SW Whidbey
YEAR ENDING: December 31, 2011
CLASSIFICATION: Approved, Inactive, Prohibited and Unclassified

Activities in the Growing Area in 2011

A portion of SW Whidbey is Inactive until 2014; Stations 248, 249, 250, 254, 256, 257 and 258 were sampled two times in 2011 as per policy for Inactive growing areas. All other stations in the SW Whidbey growing area were sampled six times using the Systematic Random Sampling method.

Analytical Results of Water Samples

Table 1 summarizes the results of all samples collected from the SW Whidbey growing area. This summary shows that all stations in the SW Whidbey growing area pass NSSP water quality standards.

Change in Actual Pollution Sources that Impact the Growing Area

We currently have no information indicating that the SW Whidbey growing area has new sources of pollution.

Classification Status

- Well within the classification standards
- Meets standards, but some concerns
- Meets standards, but threatened with downgrade in classification
- Fails to meet current classification standards

Remarks and Recommendations

Table 1 shows that all stations in the SW Whidbey growing area meet NSSP water quality standards for an Approved classification and that the area is correctly classified.

TABLE 1

SUMMARY OF MARINE WATER DATA (SRS)

Growing Area: **SOUTH WEST WHIDBEY**

Classification: **Approved**

From **12/05/2001** To **10/25/2011**

FECAL COLIFORM ORGANISMS/100 ML

Station Number	Classification	Number of Samples	Range	Geometric Mean	Est. 90th Percentile	Meets Std.
248	Approved	31	1.7 - 4.0	1.8	2.0	Yes
249	Approved	32	1.7 - 13.0	1.9	3.0	Yes
250	Approved	32	1.7 - 49.0	2.0	4.0	Yes

From **07/05/2005** To **12/21/2011**

FECAL COLIFORM ORGANISMS/100 ML

Station Number	Classification	Number of Samples	Range	Geometric Mean	Est. 90th Percentile	Meets Std.
259	Approved	30	1.7 - 4.5	1.8	2.0	Yes
260	Approved	31	1.7 - 13.0	2.0	3.0	Yes

From **04/16/2003** To **10/25/2011**

FECAL COLIFORM ORGANISMS/100 ML

Station Number	Classification	Number of Samples	Range	Geometric Mean	Est. 90th Percentile	Meets Std.
254	Approved	31	1.7 - 49.0	2.2	6.0	Yes
256	Approved	30	1.7 - 2.0	1.7	1.0	Yes
257	Approved	31	1.7 - 2.0	1.7	1.0	Yes
258	Approved	30	1.7 - 13.0	2.0	3.0	Yes

Classification: Unclassified, Prohibited

From 12/21/2004 To 12/21/2011
FECAL COLIFORM ORGANISMS/100 ML

Station Number	Classification	Number of Samples	Range	Geometric Mean	Est. 90th Percentile	Meets Std.
246	Unclassified	33	1.7 - 49.0	2.7	8.0	Yes
247	Unclassified	34	1.7 - 78.0	2.3	6.0	Yes
309	Unclassified	33	1.7 - 540.0	3.4	16.0	Yes
255	Prohibited	30	1.7 - 23.0	1.9	3.0	Yes
284	Prohibited	30	1.7 - 11.0	1.9	3.0	Yes

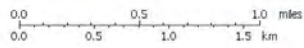
All tides information is presented

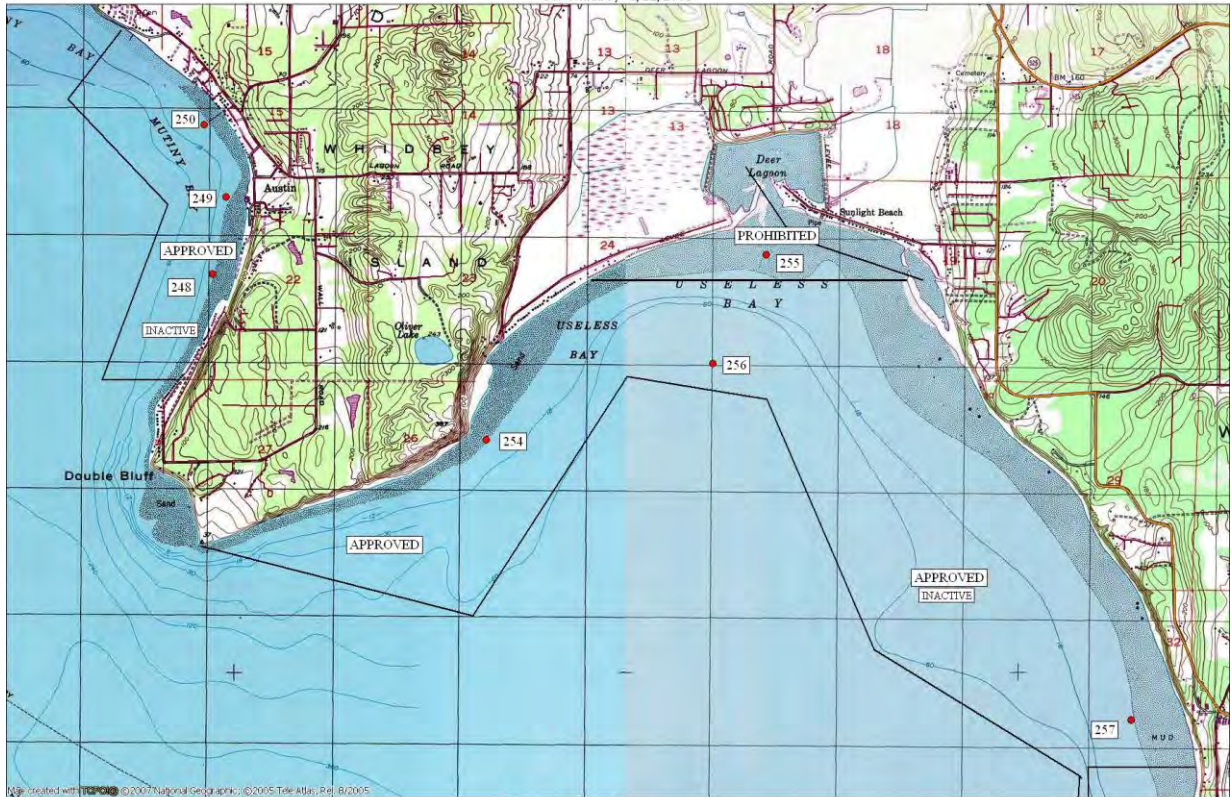
The standard for approved shellfish growing waters is fecal coliform geometric mean not greater than 14 organisms/100 ml and an estimate of the 90th percentile not greater than 43 organisms/100 ml. The above table shows bacteriological results in relation to program standards.

† All samples have been verified.

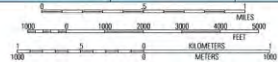


Map created with  ©2006 National Geographic





Map created with ©2007 National Geographic. ©2005 Tele Atlas, Rel. B/2005



TN 174
17°
02/03/10