



PETER BROWNING, DIRECTOR
HOWARD LEIBRAND, M.D., HEALTH OFFICER

700 South 2nd Street Room #301, PO Box 91071, Mount Vernon, WA 98273
Telephone (360) 336-9380, Toll free 877-336-9380; Fax (360) 336-9401
Internet: www.skagitcounty.net/health

TO: Lynn Schneider
Laura Homan
Shellfish and Water Protection
Washington State Department of Health

FROM: Steve Olsen, On-site Sewage Program Lead

DATE: January 15, 2009

RE: Fourth Quarter 2008 Report for Skagit County
Wastewater Program Management Program & Database Development

This is to report on the deliverables for the Wastewater Program Management and Database Enhancement contract for Skagit County.

Task 1: OSS Database Development

The database continues to be upgraded. Three new versions have been implemented in the fourth quarter alone! On site staff has provided input during meetings and in the course of day-to-day work identifying ways to improve data entry, formatting of data fields, and enhancement to query mechanics and tools. These new developments have helped to achieve the goals listed in the contract. Included in this quarter's developments are the following:

Septic Manager Version 2.5 changes made on October 20, 2008:

- The name of the current logged-in user displays in the status bar at the bottom of the window.
- The error reporting mechanism has been totally rewritten, so application developer (contractor) will be automatically notified when the application crashes or an error occurs.
- When the application starts, the system checks the version of the application against the version number of the back-end database, and will notify the user if they aren't running an up-to-date version.
- On the GIS Parcel List screen, there is a new checkbox that lets you limit the results to show only active septic systems. (The default is all septic systems – including inactive or decommissioned systems – are shown.)
- New system evaluations (inspections and pump reports) only show tabs for active system components. (Existing evaluations will show tabs for all components that were originally reported.)
- You can now change the component type of a septic system component, as long as you are changing it to another component type within the same class. (In other words, you can change a septic tank to another type of tank, but not to a drainfield.)
- On the system component list, inactive/decommissioned components are grayed out and automatically show at the bottom of the list. (The ordering buttons are now working properly as well.)

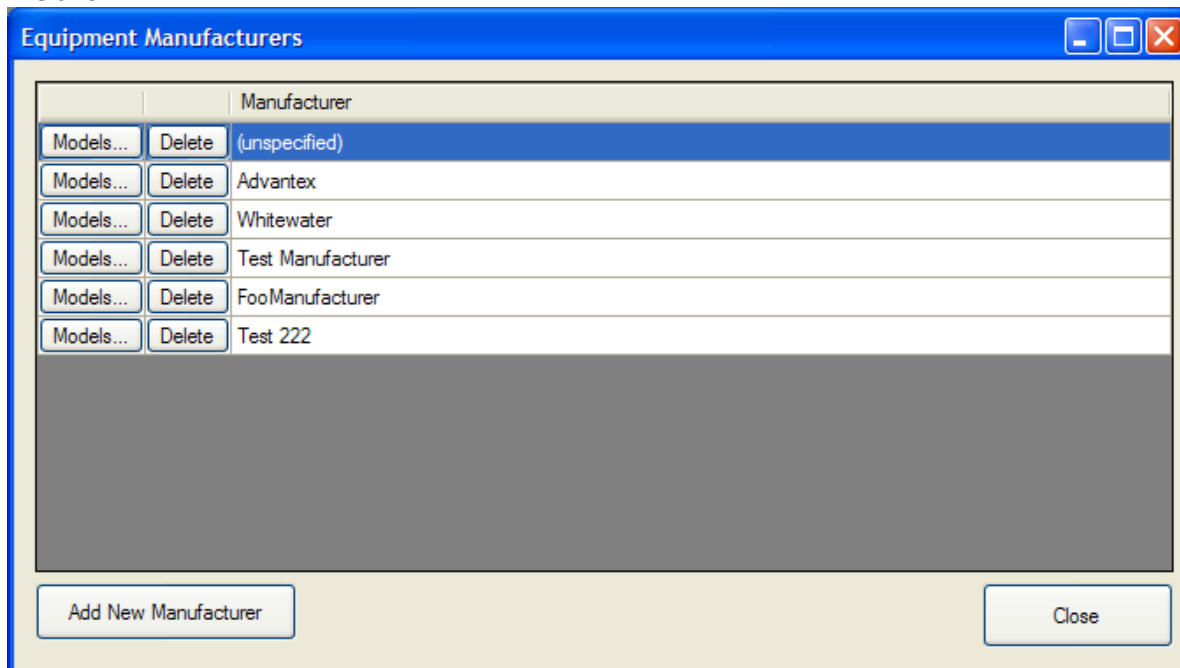
- The GIS parcel list now shows the next inspection due date.
- On linked parcels, “approval date” has been renamed to “status date.”

Septic Manger Version 2.6 changes made on December 11, 2008:

- There were several “bug” fixes.
- “Unit Number” is now being pulled from the Assessor’s database for addresses.
- The Permits tab for septic systems has been moved ahead of the Components, Evaluations and Pump Records tabs.
- Rather than have the system make an (usually incorrect) guess of the septic system type, it can now be manually set.
- There is now a read-only system evaluation view. Just select “Open Evaluation” from the toolbar on the evaluations list. (This has not been turned on for pump records, but will be in the next release.)
- Parcels and septic systems can now be searched by permit number. Just type in the permit number into either the parcel or septic search box, and it’ll pull up the parcel/septic system associated with the permit.
- System evaluations and pump records can now be set up to take questions that allow for text and decimal answer values, not just integer and yes/no values.
- Integer and decimal answer fields on evaluations/pump records will not allow entry of non-appropriate characters (you can’t type in letters, for example).
- On the “evaluation edit” screen, the username of the person who entered the report is displayed. (This will be added to the “read-only” view in the next release.)

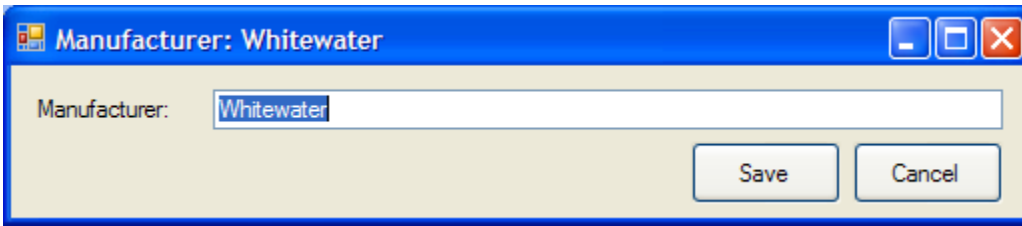
Septic Manager Version 2.7 contained some major changes as well as corrections to the program. These were available for download on December 31, 2008:

- Most of the maintenance screens (to maintain lookup lists like manufacturers, system models, component types, etc.) now are split into two screens – a list and a details screen. The list looks like this:

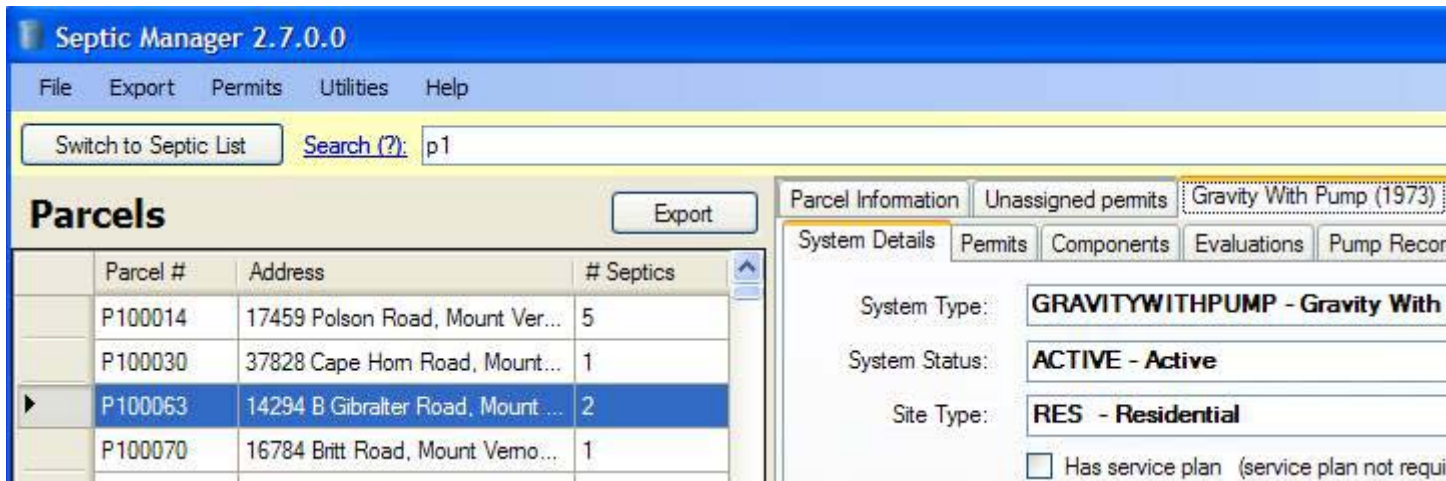


This makes it much easier to figure out what you’re looking at. To edit a particular entry, simply double-click it. To add a new one, click the “add new” button. To view subentries (like component models for a given manufacturer); just click the appropriate button on the row.

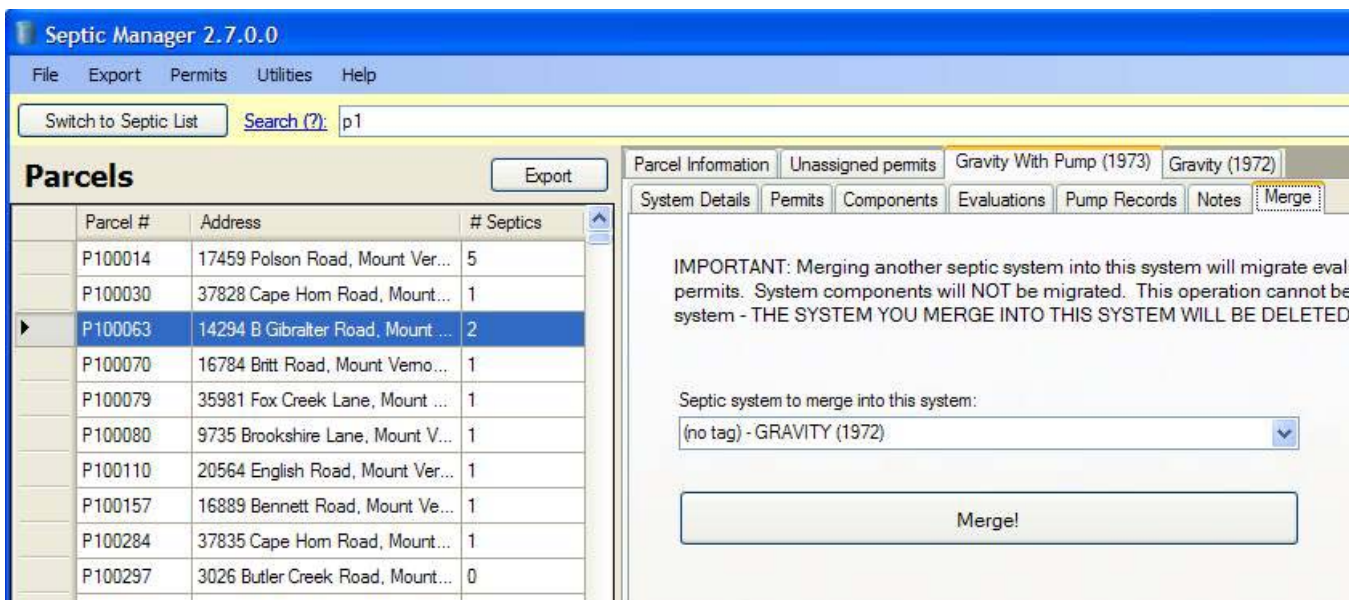
The details view looks like this:



- For parcels with a large number of septic systems (like trailer parks), rather than have the tabs scroll off the screen to the right (which was confusing), the tabs will now form rows as needed so all the tabs will be visible at once.
- Similarly, evaluations with a large number of components will have their tabs form up into multiple rows rather than scroll off the right side of the screen.
- The “All Unassigned Permits” screen now has the option to export the list to Excel.
- You can now merge two septic systems on the same parcel into a single septic system in the event O&M data has been split for a system. This feature enables the data to be merged to accurately reflect which system it is associated with.

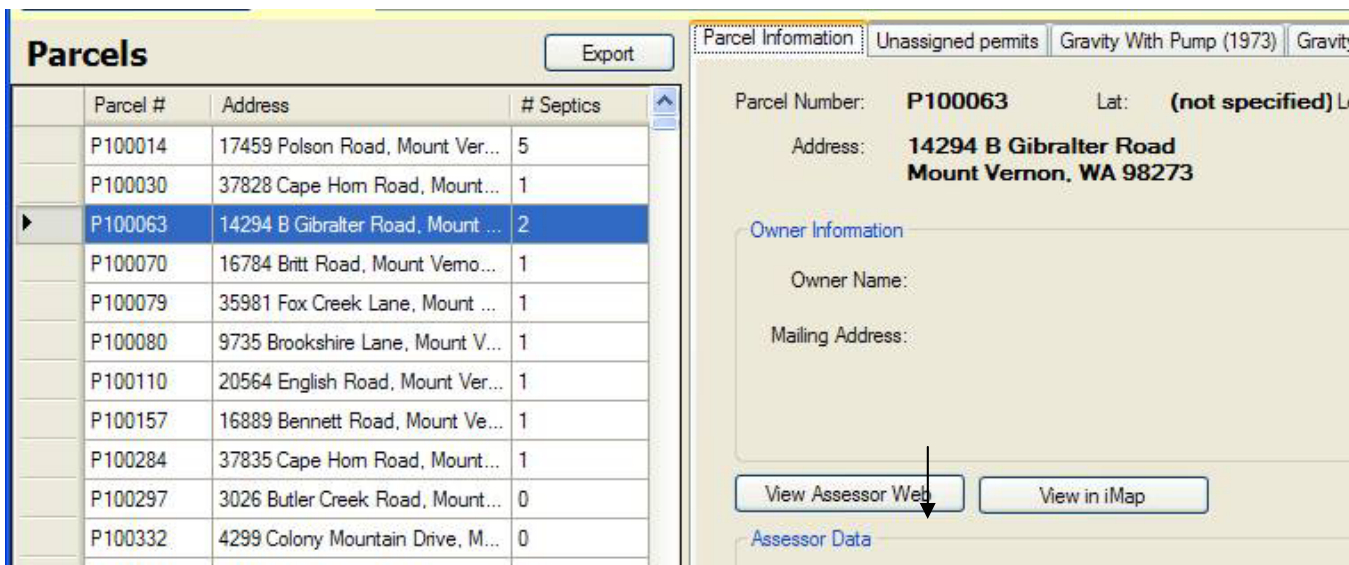


Let's say that the “Gravity with Pump (1973)” is the right one, but some evaluations and permits have been entered onto the other system. To fix this, we use the “Merge tab” on the SYSTEM WE WANT TO KEEP.



Since there are only two systems on this parcel (or so the system currently thinks), the other system is automatically selected in the dropdown box. When you press the “Merge” button, the GRAVITY system’s evaluations, pump records, notes, and attached permits will all be moved to the GRAVITY WITH PUMP system, and then the GRAVITY system will be deleted, completing the merge. Please note; a merge cannot be reversed.

- The Parcel info tab now has a button that opens up the Assessor’s web page for that parcel. The tab linking directly to Skagit County iMap remains.



Several interdepartmental meetings were held this quarter to address O&M database issues. These meeting dates were October 2, November 6, December 4 and 10, 2008. Departments involved included Planning and Development Services, Information Services, Assessors Office and GIS Department.

Task 2: Raise public awareness of MRA's to accomplish designation of MRA's by Skagit County Board of Health

Septics 101 were provided during this quarter with emphasis in the Marine Recovery Areas established in September 2008. Four Septics 101 clinics were provided in this contract period (October 5, October 29, November 19, and December 5, 2008), at which time the status of operations and maintenance of systems in the Marine Recovery Areas were presented via maps. Advertising of the Septics 101 Clinics has also included the message concerning the O&M inspection requirement (**Attachment F** contains the series of ads run this quarter).

A report was provided to the Samish River Watershed Technical Advisory Committee on December 8, 2008 of the established Marine Recovery Areas and Sensitive Areas.

Bay View State Park Sewer Feasibility Study. As reported last quarter, Washington State Parks is still pursuing their preferred choice of extending a sewer line to Bay View. A meeting was facilitated by Skagit County Public Health on October 6 with a representative of the environmental group, Friends of Skagit County (FOSC), State Parks, State Parks' consultant, representatives from Bay View and Skagit County Planning & Development Services. Though the meeting was cordial enough, we received a copy of a letter the next week from the president of FOSC. The letter was addressed to State Parks, dated the same day of our meeting, stating their opposition to such a project.

Also, during this time the State Parks' consultant prepared a draft scope of work to roughly estimate the cost of connecting the town of Bay View to the sewer line. The County pursued securing \$20,000 to complete this portion of the feasibility study; however, potential funding sources were quickly drying up, particularly in light of the economic crisis. It is difficult for Skagit County to justify efforts in facilitating a discussion amongst all parties with vanishing resources, and in the light of clear opposition.

Skagit County Health sent the attached letter (attachment A) dated October 28, 2008 to all Bay View residents encouraging them to not delay evaluating their on-site sewage disposal system even though rumors of a sewer line are still circulating.

Task 3: Notification to property owners in MRA's and sensitive areas.

Approximately 1,500 letters were sent to property owners within four established Marine Recovery Areas during this contract period. The purposes of the letters were to inform property owners of the recent MRA designation, the O&M requirements and announcement of the scheduled Septics 101 Clinics (which provided more detailed information about the MRAs and the O&M requirements). Dates and number of letters sent are summarized as follows:

1. Bay View rural village, October 28, 2008 - 90 letters (attachment A)
2. Samish Island, November 10, 2008 - 412 letters (attachment B)
3. Yokeko Point, Dewey Beach, Quiet Cover, November 12, 2008 - 300 letters (attachment C)
4. Similk Beach, November 13, 2008 – 90 letters (attachment D)
5. Bay View Watershed, November 17, 2008 – 553 letters (attachment E)

Three different letters were sent to the area residents depending on O&M status. Examples are attached (see attachments A, B, C and E).

The Septics 101s offered during these dates were very well attended:

1. October 15, 2008 – 27 attendees
2. October 29, 2008 (for Watershed Master training) – 25 attendees
3. November 19, 2008 – 121 attendees
4. December 5, 2008 – 88 attendees

Maps were made illustrating the O&M status for these meetings as well:

1. Bay View Watershed OSS status November 2008 – attachment G.
2. Similk Beach OSS status November 2008 – attachment H.

On-site Sewage System Enumeration

The current numbers reflecting assumed, known and unknown on-site sewage systems for Skagit County is represented in Table 1:

Skagit County On Site Sewage System Inventory December 2008		
Category	Source	Number
Assumed	Assessors (approximate)	20,000
Known	Septic Manager database	12,154
Unknown	Assessors minus Septic Manager	7,846

Table 1

This shows an increase in the number of known systems of 282 from July 2008 as represented in Table 2:

Skagit County On Site Sewage System Inventory July 2008		
Category	Source	Number
Assumed	Assessors (approximate)	20,000
Known	Septic Manager database	11,500
Unknown	Assessors minus Septic Manager	8,500

Table 2

In addition to the statistics above a summary of Skagit County on site sewage system O&M history, OSS permit history, New vs. Repairs history, and failures found by means of O&M inspections is included in this report as an attachment (attachment I).

Costs Accrued in Fourth Quarter 2008.

We spent up to our contract amount for 2008, which was \$4,418.38. All of this money was spent on Task 1, Database Enhancement.