



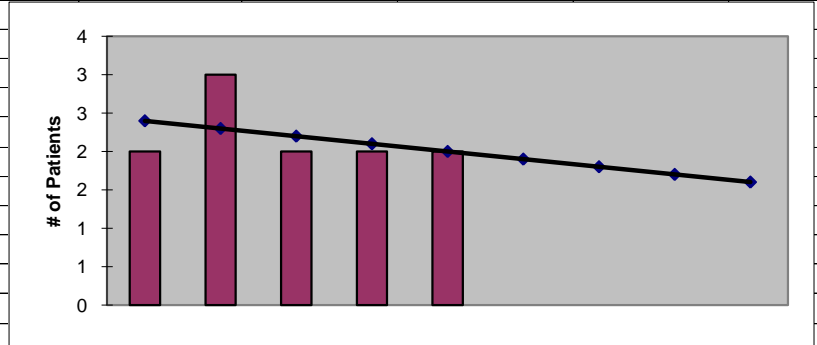
**2011  
Ferry County  
ESRD Need Projection Methodology**

Planning Area		6 Year Utilization Data - Resident Incenter Patients					
Ferry	2005	2006	2007	2008	2009	2010	
Ferry County	2	2	2	2	2	2	
<b>TOTALS</b>	<b>2</b>	<b>2</b>	<b>2</b>	<b>2</b>	<b>2</b>	<b>2</b>	
<b>246-310-284(4)(a)</b>	Rate of Change		0.00%	0.00%	0.00%	0.00%	0.00%
	6% Growth or Greater?		FALSE	FALSE	FALSE	FALSE	FALSE
	Regression Method:	Linear					
<b>246-310-284(4)(c)</b>			Year 1	Year 2	Year 3	Year 4	
			2011	2012	2013	2014	
Projected Resident Incenter Patients	from 246-310-284(4)(b)		1.90	1.80	1.70	1.60	
Station Need for Patients	Divide Resident Incenter Patients by 3.2		0.5937	0.5625	0.5312	0.5000	
	Rounded to next whole number		1	1	1	1	
<b>246-310-284(4)(d)</b>	subtract (4)(c) from approved stations						
Existing CN Approved Stations			0	0	0	0	
Results of (4)(c) above		-	1	1	1	1	
Net Station Need			-1	-1	-1	-1	
Negative number indicates need for stations							
<b>246-310-284(5)</b>							
Name of Center	# of Stations	Patients	Utilization (Patients per Station)				
None	0	0					
<b>Total</b>	<b>0</b>	<b>0</b>					
Source: Northwest Renal Network data 2005-2010							
Most recent year-end data: 2010 year-end data as of 02/16/2011							
Most recent quarterly data as of the 1st day of application submission period: 4th quarter 2010 as of 02/16/2010							

x	y	Linear
2006	2	2
2007	3	2
2008	2	2
2009	2	2
2010	2	2
2011		<b>1.900</b>
2012		<b>1.800</b>
2013		<b>1.700</b>
2014		<b>1.600</b>

**SUMMARY OUTPUT**

<i>Regression Statistics</i>	
Multiple R	0.353553391
R Square	0.125
Adjusted R Square	-0.166666667
Standard Error	0.483045892
Observations	5



<b>ANOVA</b>					
	<i>df</i>	<i>SS</i>	<i>MS</i>	<i>F</i>	<i>Significance F</i>
Regression	1	0.1	0.1	0.428571429	0.559404344
Residual	3	0.7	0.233333333		
Total	4	0.8			

	<i>Coefficients</i>	<i>Standard Error</i>	<i>t Stat</i>	<i>P-value</i>	<i>Lower 95%</i>	<i>Upper 95%</i>	<i>Lower 95.0%</i>	<i>Upper 95.0%</i>
Intercept	203	306.7271426	0.661826007	0.555378713	-773.1426615	1179.142662	-773.1426615	1179.142662
X Variable 1	-0.1	0.152752523	-0.654653671	0.559404344	-0.586126703	0.386126703	-0.586126703	0.386126703

**RESIDUAL OUTPUT**

<i>Observation</i>	<i>Predicted Y</i>	<i>Residuals</i>
1	2.4	-0.4
2	2.3	0.7
3	2.2	-0.2
4	2.1	-0.1
5	2	0