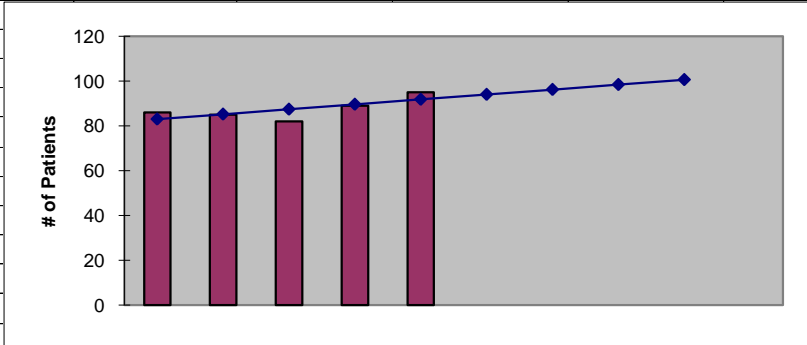




**2011  
King County 11  
ESRD Need Projection Methodology**

Planning Area		6 Year Utilization Data - Resident Incenter Patients					
King Eleven (11)		2005	2006	2007	2008	2009	2010
	98001	17	22	24	26	23	21
	98002	29	30	29	30	37	42
	98010	2	2	2	1	2	2
	98047	3	6	4	8	10	8
	98092	25	26	26	17	17	22
	<b>TOTALS</b>	<b>76</b>	<b>86</b>	<b>85</b>	<b>82</b>	<b>89</b>	<b>95</b>
<b>246-310-284(4)(a)</b>	Rate of Change		13.16%	-1.16%	-3.53%	8.54%	6.74%
	6% Growth or Greater?		TRUE	FALSE	FALSE	TRUE	TRUE
	Regression Method:	Linear					
<b>246-310-284(4)(c)</b>				Year 1 2011	Year 2 2012	Year 3 2013	Year 4 2014
Projected Resident Incenter Patients	from 246-310-284(4)(b)			94.00	96.20	98.40	<b>100.60</b>
Station Need for Patients	Divide Resident Incenter Patients by 4.8			19.5833	20.0417	20.5000	<b>20.9583</b>
	Rounded to next whole number			<b>20</b>	<b>21</b>	<b>21</b>	<b>21</b>
<b>246-310-284(4)(d)</b>	subtract (4)(c) from approved stations						
Existing CN Approved Stations				24	24	24	<b>24</b>
Results of (4)(c) above			-	20	21	21	<b>21</b>
Net Station Need				4	3	3	<b>3</b>
Negative number indicates need for stations							
<b>246-310-284(5)</b>							
Name of Center	# of Stations	Patients	Utilization (Patients per Station)				
NKC - Auburn	24	125	5.21				
<b>Total</b>	<b>24</b>	<b>125</b>					
Source: Northwest Renal Network data 2005-2010							
Most recent year-end data: 2010 year-end data as of 02/16/2011							
Most recent quarterly data as of the 1st day of application submission period: 4th quarter 2010 as of 02/16/2010							

x	y	Linear
2006	86	83
2007	85	85
2008	82	87
2009	89	90
2010	95	92
2011		94.00
2012		96.20
2013		98.40
2014		100.60



SUMMARY OUTPUT

Regression Statistics	
Multiple R	0.705650329
R Square	0.497942387
Adjusted R Square	0.330589849
Standard Error	4.03319559
Observations	5

ANOVA					
	df	SS	MS	F	Significance F
Regression	1	48.4	48.4	2.975409836	0.18300273
Residual	3	48.8	16.26666667		
Total	4	97.2			

	Coefficients	Standard Error	t Stat	P-value	Lower 95%	Upper 95%	Lower 95.0%	Upper 95.0%
Intercept	-4330.2	2561.020765	-1.690810187	0.189452511	-12480.51107	3820.111071	-12480.51107	3820.111071
X Variable 1	2.2	1.275408431	1.724937633	0.18300273	-1.858918849	6.258918849	-1.858918849	6.258918849

RESIDUAL OUTPUT

Observation	Predicted Y	Residuals
1	83	3
2	85.2	-0.2
3	87.4	-5.4
4	89.6	-0.6
5	91.8	3.2