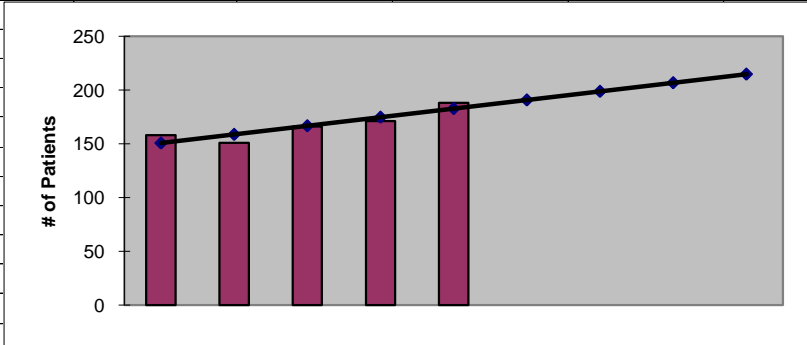




**2011
Kitsap County
ESRD Need Projection Methodology**

Planning Area		6 Year Utilization Data - Resident Incenter Patients					
Kitsap		2005	2006	2007	2008	2009	2010
Kitsap County		152	158	151	166	171	188
TOTALS		152	158	151	166	171	188
246-310-284(4)(a)	Rate of Change		3.95%	-4.43%	9.93%	3.01%	9.94%
	6% Growth or Greater?		FALSE	FALSE	TRUE	FALSE	TRUE
	Regression Method:	Linear					
246-310-284(4)(c)				Year 1	Year 2	Year 3	Year 4
				2011	2012	2013	2014
Projected Resident Incenter Patients	from 246-310-284(4)(b)			190.80	198.80	206.80	214.80
Station Need for Patients	Divide Resident Incenter Patients by 4.8			39.7500	41.4167	43.0833	44.7500
	Rounded to next whole number			40	42	44	45
246-310-284(4)(d)	subtract (4)(c) from approved stations						
Existing CN Approved Stations				38	38	38	38
Results of (4)(c) above			-	40	42	44	45
Net Station Need				-2	-4	-6	-7
Negative number indicates need for stations							
246-310-284(5)							
Name of Center	# of Stations	Patients	Utilization (Patients per Station)				
OPKC	19	97	5.11				
OPKC South Kitsap	11	49	4.45				
OPKC North	8	36	4.50				
Total	38	182					
Source: Northwest Renal Network data 2005-2010							
Most recent year-end data: 2010 year-end data as of 02/16/2011							
Most recent quarterly data as of the 1st day of application submission period: 4th quarter 2010 as of 02/16/2010							

x	y	Linear
2006	158	151
2007	151	159
2008	166	167
2009	171	175
2010	188	183
2011		190.800
2012		198.800
2013		206.800
2014		214.800



SUMMARY OUTPUT

<i>Regression Statistics</i>	
Multiple R	0.897348328
R Square	0.805234021
Adjusted R Square	0.740312028
Standard Error	7.183313998
Observations	5

ANOVA					
	<i>df</i>	<i>SS</i>	<i>MS</i>	<i>F</i>	<i>Significance F</i>
Regression	1	640	640	12.40310078	0.038866926
Residual	3	154.8	51.6		
Total	4	794.8			

	<i>Coefficients</i>	<i>Standard Error</i>	<i>t Stat</i>	<i>P-value</i>	<i>Lower 95%</i>	<i>Upper 95%</i>	<i>Lower 95.0%</i>	<i>Upper 95.0%</i>
Intercept	-15897.2	4561.300315	-3.485234232	0.039903957	-30413.29333	-1381.10667	-30413.29333	-1381.10667
X Variable 1	8	2.271563338	3.521803625	0.038866926	0.770871648	15.22912835	0.770871648	15.22912835

RESIDUAL OUTPUT

<i>Observation</i>	<i>Predicted Y</i>	<i>Residuals</i>
1	150.8	7.2
2	158.8	-7.8
3	166.8	-0.8
4	174.8	-3.8
5	182.8	5.2