



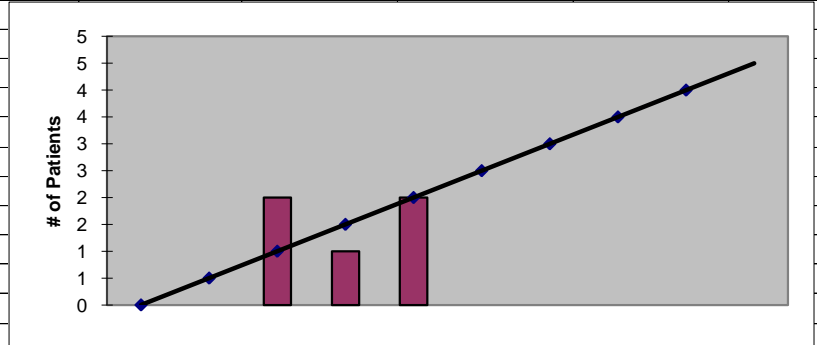
2011
San Juan County
ESRD Need Projection Methodology

Planning Area		6 Year Utilization Data - Resident Incenter Patients					
San Juan		2005	2006	2007	2008	2009	2010
San Juan		0	0	0	2	1	2
TOTALS		0	0	0	2	1	2
246-310-284(4)(a)	Rate of Change		#DIV/0!	#DIV/0!	#DIV/0!	-50.00%	100.00%
	6% Growth or Greater?		#DIV/0!	#DIV/0!	#DIV/0!	FALSE	TRUE
	Regression Method:	Linear					
246-310-284(4)(c)				Year 1 2011	Year 2 2012	Year 3 2013	Year 4 2014
Projected Resident Incenter Patients	from 246-310-284(4)(b)			2.500	3.000	3.500	4.000
Station Need for Patients	Divide Resident Incenter Patients by 3.2			0.7813	0.9375	1.0938	1.2500
	Rounded to next whole number			1	1	2	2
246-310-284(4)(d)	subtract (4)(c) from approved stations						
Existing CN Approved Stations				0	0	0	0
Results of (4)(c) above			-	1	1	2	2
Net Station Need				-1	-1	-2	-2
Negative number indicates need for stations							
246-310-284(5)							
Name of Center	# of Stations	Patients	Utilization (Patients per Station)				
None	0	0	0.00				
Total	0	0					
Source: Northwest Renal Network data 2005-2010							
Most recent year-end data: 2010 year-end data as of 02/16/2011							
Most recent quarterly data as of the 1st day of application submission period: 4th quarter 2010 as of 02/16/2010							

x	y	Linear
2006	0	0
2007	0	1
2008	2	1
2009	1	2
2010	2	2
2011		2.500
2012		3.000
2013		3.500
2014		4.000

SUMMARY OUTPUT

Regression Statistics	
Multiple R	0.790569415
R Square	0.625
Adjusted R Square	0.5
Standard Error	0.707106781
Observations	5



ANOVA					
	df	SS	MS	F	Significance F
Regression	1	2.5	2.5	5	0.111367155
Residual	3	1.5	0.5		
Total	4	4			

	Coefficients	Standard Error	t Stat	P-value	Lower 95%	Upper 95%	Lower 95.0%	Upper 95.0%
Intercept	-1003	449.0025612	-2.233840264	0.11159773	-2431.926542	425.9265419	-2431.926542	425.9265419
X Variable 1	0.5	0.223606798	2.236067977	0.111367155	-0.211616627	1.211616627	-0.211616627	1.211616627

RESIDUAL OUTPUT

Observation	Predicted Y	Residuals
1	0	0
2	0.5	-0.5
3	1	1
4	1.5	-0.5
5	2	0