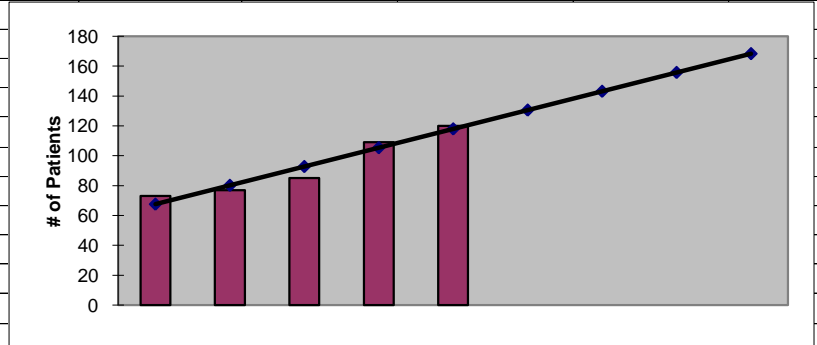




2011
Skagit County
ESRD Need Projection Methodology

Planning Area		6 Year Utilization Data - Resident Incenter Patients					
Skagit		2005	2006	2007	2008	2009	2010
Skagit		81	73	77	85	109	120
TOTALS		81	73	77	85	109	120
246-310-284(4)(a)	Rate of Change		-9.88%	5.48%	10.39%	28.24%	10.09%
	6% Growth or Greater?		FALSE	FALSE	TRUE	TRUE	TRUE
	Regression Method:	Linear					
246-310-284(4)(c)				Year 1	Year 2	Year 3	Year 4
				2011	2012	2013	2014
Projected Resident Incenter Patients	from 246-310-284(4)(b)			130.60	143.20	155.80	168.40
Station Need for Patients	Divide Resident Incenter Patients by 4.8			27.2083	29.8333	32.4583	35.0833
	Rounded to next whole number			28	30	33	36
246-310-284(4)(d)	subtract (4)(c) from approved stations						
Existing CN Approved Stations				27	27	27	27
Results of (4)(c) above			-	28	30	33	36
Net Station Need				-1	-3	-6	-9
Negative number indicates need for stations							
246-310-284(5)							
Name of Center	# of Stations	Patients	Utilization (Patients per Station)				
Skagit Valley	27	127	4.70				
Total	27	127					
Source: Northwest Renal Network data 2005-2010							
Most recent year-end data: 2010 year-end data as of 02/16/2011							
Most recent quarterly data as of the 1st day of application submission period: 4th quarter 2010 as of 02/16/2010							

x	y	Linear
2006	73	68
2007	77	80
2008	85	93
2009	109	105
2010	120	118
2011		130.600
2012		143.200
2013		155.800
2014		168.400



SUMMARY OUTPUT

<i>Regression Statistics</i>	
Multiple R	0.965014473
R Square	0.931252933
Adjusted R Square	0.908337244
Standard Error	6.250333324
Observations	5

ANOVA					
	<i>df</i>	<i>SS</i>	<i>MS</i>	<i>F</i>	<i>Significance F</i>
Regression	1	1587.6	1587.6	40.63822526	0.007814014
Residual	3	117.2	39.06666667		
Total	4	1704.8			

	<i>Coefficients</i>	<i>Standard Error</i>	<i>t Stat</i>	<i>P-value</i>	<i>Lower 95%</i>	<i>Upper 95%</i>	<i>Lower 95.0%</i>	<i>Upper 95.0%</i>
Intercept	-25208	3968.871104	-6.351428237	0.007895812	-37838.71918	-12577.2808	-37838.71918	-12577.2808
X Variable 1	12.6	1.976528944	6.374811782	0.007814014	6.309802766	18.89019723	6.309802766	18.89019723

RESIDUAL OUTPUT

<i>Observation</i>	<i>Predicted Y</i>	<i>Residuals</i>
1	67.6	5.4
2	80.2	-3.2
3	92.8	-7.8
4	105.4	3.6
5	118	2