



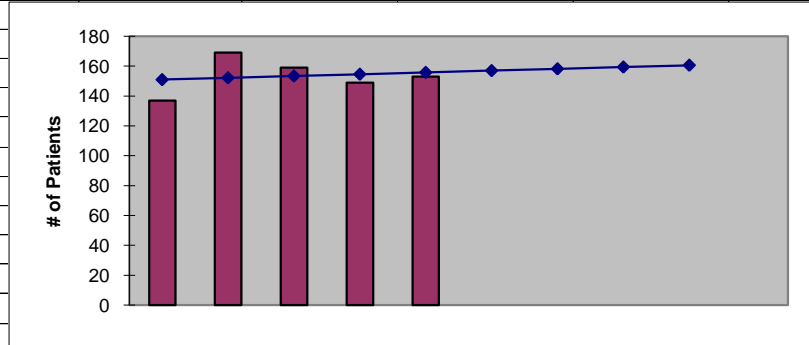
2011
Snohomish County 3
ESRD Need Projection Methodology

Planning Area		6 Year Utilization Data - Resident Incenter Patients						
Snohomish Three (3)		2005	2006	2007	2008	2009	2010	
98012		11	16	21	19	16	20	
98020		11	11	12	13	17	15	
98021		6	5	7	6	7	9	
98026		21	26	29	26	22	18	
98036		29	28	30	21	21	20	
98037		34	28	37	34	30	29	
98043		12	10	12	14	11	19	
98087		0	3	9	14	14	14	
98296		13	10	12	12	11	9	
TOTALS		137	137	169	159	149	153	
246-310-284(4)(a)		Rate of Change		0.00%	23.36%	-5.92%	-6.29%	2.68%
		6% Growth or Greater?		FALSE	TRUE	FALSE	FALSE	FALSE
		Regression Method:	Linear					
246-310-284(4)(c)				Year 1	Year 2	Year 3	Year 4	
				2011	2012	2013	2014	
Projected Resident Incenter Patients		from 246-310-284(4)(b)		157.00	158.20	159.40	160.60	
Station Need for Patients		Divide Resident Incenter Patients by 4.8		32.7083	32.9583	33.2083	33.4583	
		Rounded to next whole number		33	33	34	34	
246-310-284(4)(d)		subtract (4)(c) from approved stations						
Existing CN Approved Stations				36	36	36	36	
Results of (4)(c) above				- 33	33	34	34	
Net Station Need				3	3	2	2	
Negative number indicates need for stations								
246-310-284(5)								
Name of Center	# of Stations	Patients	Utilization (Patients per Station)					
PS Kidney Ctr - South	27	142	5.26					
DaVita Mill Creek	9	16	1.78					
Total	36	158						
Source: Northwest Renal Network data 2005-2010								
Most recent year-end data: 2010 year-end data as of 02/16/2011								
Most recent quarterly data as of the 1st day of application submission period: 4th quarter 2010 as of 02/16/2010								

x	y	Linear
2006	137	151
2007	169	152
2008	159	153
2009	149	155
2010	153	156
2011		157.00
2012		158.20
2013		159.40
2014		160.60

SUMMARY OUTPUT

Regression Statistics	
Multiple R	0.159900537
R Square	0.025568182
Adjusted R Square	-0.299242424
Standard Error	13.52528496
Observations	5



ANOVA					
	df	SS	MS	F	Significance F
Regression	1	14.4	14.4	0.078717201	0.797279249
Residual	3	548.8	182.9333333		
Total	4	563.2			

	Coefficients	Standard Error	t Stat	P-value	Lower 95%	Upper 95%	Lower 95.0%	Upper 95.0%
Intercept	-2256.2	8588.359992	-0.262704405	0.809786309	-29588.19452	25075.79452	-29588.19452	25075.79452
X Variable 1	1.2	4.277070649	0.280565859	0.797279249	-12.41154768	14.81154768	-12.41154768	14.81154768

RESIDUAL OUTPUT

Observation	Predicted Y	Residuals
1	151	-14
2	152.2	16.8
3	153.4	5.6
4	154.6	-5.6
5	155.8	-2.8