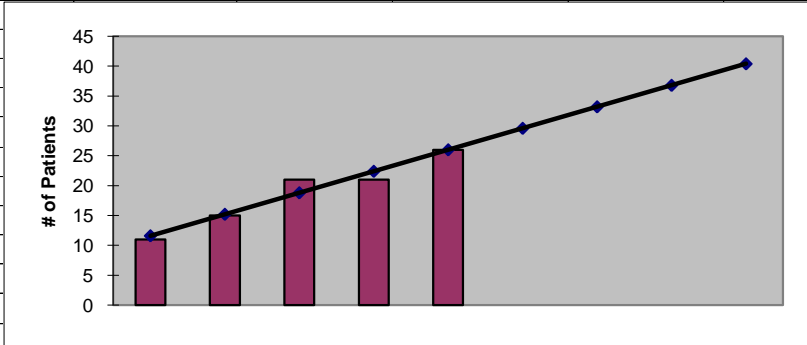




**2011
Stevens County
ESRD Need Projection Methodology**

Planning Area		6 Year Utilization Data - Resident Incenter Patients					
Stevens		2005	2006	2007	2008	2009	2010
Stevens		18	11	15	21	21	26
TOTALS		18	11	15	21	21	26
246-310-284(4)(a)	Rate of Change		-38.89%	36.36%	40.00%	0.00%	23.81%
	6% Growth or Greater?		FALSE	TRUE	TRUE	FALSE	TRUE
	Regression Method:	Linear					
246-310-284(4)(c)				Year 1	Year 2	Year 3	Year 4
				2011	2012	2013	2014
Projected Resident Incenter Patients	from 246-310-284(4)(b)			29.60	33.20	36.80	40.40
Station Need for Patients	Divide Resident Incenter Patients by 3.2			9.2500	10.3750	11.5000	12.6250
	Rounded to next whole number			10	11	12	13
246-310-284(4)(d)	subtract (4)(c) from approved stations						
Existing CN Approved Stations				6	6	6	6
Results of (4)(c) above			-	10	11	12	13
Net Station Need				-4	-5	-6	-7
Negative number indicates need for stations							
246-310-284(5)							
Name of Center	# of Stations	Patients	Utilization (Patients per Station)				
RCG-NW Colville	6	22	3.67				
Total	6	22					
Source: Northwest Renal Network data 2005-2010							
Most recent year-end data: 2010 year-end data as of 02/16/2011							
Most recent quarterly data as of the 1st day of application submission period: 4th quarter 2010 as of 02/16/2010							

x	y	Linear
2006	11	12
2007	15	15
2008	21	19
2009	21	22
2010	26	26
2011		29.600
2012		33.200
2013		36.800
2014		40.400



SUMMARY OUTPUT

<i>Regression Statistics</i>	
Multiple R	0.973328527
R Square	0.947368421
Adjusted R Square	0.929824561
Standard Error	1.549193338
Observations	5

ANOVA					
	<i>df</i>	<i>SS</i>	<i>MS</i>	<i>F</i>	<i>Significance F</i>
Regression	1	129.6	129.6	54	0.005207859
Residual	3	7.2	2.4		
Total	4	136.8			

	<i>Coefficients</i>	<i>Standard Error</i>	<i>t Stat</i>	<i>P-value</i>	<i>Lower 95%</i>	<i>Upper 95%</i>	<i>Lower 95.0%</i>	<i>Upper 95.0%</i>
Intercept	-7210	983.7153247	-7.329356186	0.005246971	-10340.6212	-4079.3788	-10340.6212	-4079.3788
X Variable 1	3.6	0.489897949	7.348469228	0.005207859	2.040926084	5.159073916	2.040926084	5.159073916

RESIDUAL OUTPUT

<i>Observation</i>	<i>Predicted Y</i>	<i>Residuals</i>
1	11.6	-0.6
2	15.2	-0.2
3	18.8	2.2
4	22.4	-1.4
5	26	0