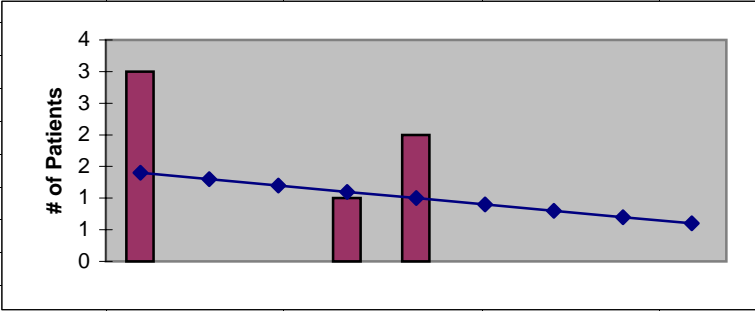


Columbia County							
ESRD Need Projection Methodology							
	Planning Area	6 Year Utilization Data - Resident Incenter Patients					
	Columbia	2001	2002	2003	2004	2005	2006
	Columbia County	1	3	0	0	1	2
	TOTALS	1	3	0	0	1	2
246-310-284(4)(a)	Rate of Change		200.00%	-100.00%	#DIV/0!	#DIV/0!	100.00%
	6% Growth or Greater?		TRUE	FALSE	#DIV/0!	#DIV/0!	TRUE
	Regression Method:	#DIV/0!					
246-310-284(4)(c)				Year 1	Year 2	Year 3	Year 4
				2007	2008	2009	2010
Projected Resident Incenter Patients	from 246-310-284(4)(b)			0.9	0.8	0.7	0.6
Station Need for Patients	Divide Resident Incenter Patients by 3.2			0.281	0.250	0.219	0.188
	Rounded to next whole number			1	1	1	1
246-310-284(4)(d)	subtract (4)(c) from approved stations						
Existing CN Approved Stations				0	0	0	0
Results of (4)(c) above			-	1	1	1	1
Net Station Need				-1	-1	-1	-1
Negative number indicates need for stations							
246-310-284(5)							
Name of Center	# of Stations	# of Patient	Utilization (Patients per Station)				
None	0	0	#DIV/0!				
	0	0	#DIV/0!				
	0	0	#DIV/0!				
	0	0	#DIV/0!				
Total	0	0					
Source: Northwest Renal Network data 2001-2006							
Most recent year-end data: 2006 year-end data as of 01/20/2007							
Most recent quarterly data as of the 1st day of application submission period: 2nd quarter 2007 as of 08/01/07							

Columbia County
ESRD Need Projection Methodology

x	y	Linear
2002	3	1
2003	0	1
2004	0	1
2005	1	1
2006	2	1
2007		1
2008		1
2009		1
2010		1



SUMMARY OUTPUT

Regression Statistics

Multiple R	0.121267813
R Square	0.014705882
Adjusted R Square	-0.31372549
Standard Error	1.494434118
Observations	5

ANOVA

	df	SS	MS	F	Significance F
Regression	1	0.1	0.1	0.044776119	0.845976303
Residual	3	6.7	2.233333333		
Total	4	6.8			

	Coefficients	Standard Error	t Stat	P-value	Lower 95%	Upper 95%	Lower 95.0%	Upper 95.0%
Intercept	201.6	947.0536873	0.21287072	0.845072252	-2812.347508	3215.547508	-2812.347508	3215.547508
X Variable 1	-0.1	0.472581563	-0.211603685	0.845976303	-1.603965448	1.403965448	-1.603965448	1.403965448

RESIDUAL OUTPUT

Observation	Predicted Y	Residuals
1	771.4	-1.399999998
2	844.1	4.900000001
3	916.8	1.2
4	989.5	-11.5
5	1062.2	6.799999998