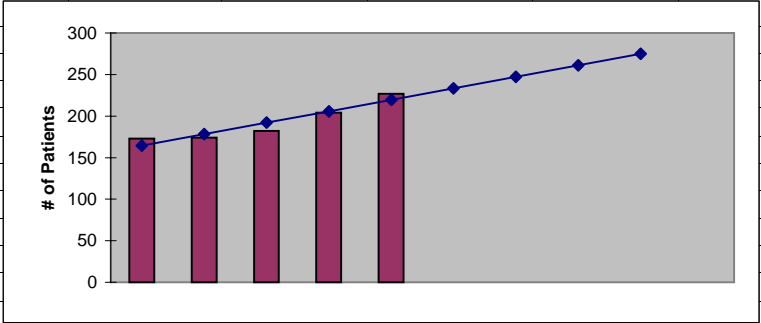


Snohomish County Planning Area Two
ESRD Need Projection Methodology

Planning Area		6 Year Utilization Data - Resident Incenter Patients					
Snohomish Two (2)		2001	2002	2003	2004	2005	2006
98201		25	31	27	25	26	32
98203		19	26	20	20	22	26
98204		17	14	19	17	28	29
98205		4	6	7	5	6	7
98208		27	33	41	35	31	32
98224		0	0	0	0	0	0
98251		3	3	3	3	1	3
98258		6	8	8	9	9	12
98270		17	22	21	29	33	37
98272		9	9	11	13	14	16
98275		2	6	6	6	8	9
98288		0	1	1	1	0	0
98290		9	10	8	14	22	22
98294		2	4	2	5	4	2
TOTALS		140	173	174	182	204	227
246-310-284(4)(a)	Rate of Change		23.57%	0.58%	4.60%	12.09%	11.27%
	6% Growth or Greater?		TRUE	FALSE	FALSE	TRUE	TRUE
	Regression Method:	Linear					
246-310-284(4)(c)				Year 1 2007	Year 2 2008	Year 3 2009	Year 4 2010
Projected Resident Incenter Patients	from 246-310-284(4)(b)			233.4	247.2	261	274.8
Station Need for Patients	Divide Resident Incenter Patients by 4.8			48.6250	51.5000	54.3750	57.2500
	Rounded to next whole number			49	52	55	58
246-310-284(4)(d)	subtract (4)(c) from approved stations						
Existing CN Approved Stations				37	37	37	37
Results of (4)(c) above			-	49	52	55	58
Net Station Need				-12	-15	-18	-21
Negative number indicates need for stations							
246-310-284(5)							
Name of Center	# of Stations	# of Patients	Utilization (Patients per Station)				
Pug Snd Kidney Center	37	183	4.95				
Total	37	183					
Source: Northwest Renal Network data 2001-2006							
Most recent year-end data: 2006 year-end data as of 01/20/2007							
Most recent quarterly data as of the 1st day of application submission period: 3rd quarter 2007 as of 11/01/2007							

Snohomish County Planning Area Two
ESRD Need Projection Methodology

x	y	Linear
2002	173	164
2003	174	178
2004	182	192
2005	204	206
2006	227	220
2007		233.40
2008		247.20
2009		261.00
2010		274.80



SUMMARY OUTPUT

Regression Statistics	
Multiple R	0.940277918
R Square	0.884122563
Adjusted R Square	0.84549675
Standard Error	9.121403401
Observations	5

ANOVA

	df	SS	MS	F	Significance F
Regression	1	1904.4	1904.4	22.88942308	0.01736229
Residual	3	249.6	83.2		
Total	4	2154			

	Coefficients	Standard Error	t Stat	P-value	Lower 95%	Upper 95%	Lower 95.0%	Upper 95.0%
Intercept	-27463.2	5780.421244	-4.751072429	0.017694228	-45859.08023	-9067.31977	-45859.08023	-9067.319771
X Variable 1	13.8	2.88444102	4.784289192	0.01736229	4.620421333	22.97957867	4.620421333	22.97957867

RESIDUAL OUTPUT

Observation	Predicted Y	Residuals
1	771.4	-1.399999998
2	844.1	4.900000001
3	916.8	1.2
4	989.5	-11.5
5	1062.2	6.799999998