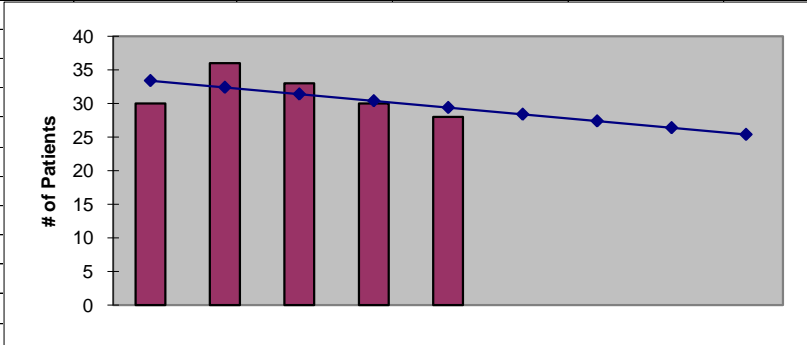




**2011
Douglas County
ESRD Need Projection Methodology**

Planning Area		6 Year Utilization Data - Resident Incenter Patients					
Adams		2005	2006	2007	2008	2009	2010
Adams		26	30	36	33	30	28
TOTALS		26	30	36	33	30	28
246-310-284(4)(a)	Rate of Change		15.38%	20.00%	-8.33%	-9.09%	-6.67%
	6% Growth or Greater?		TRUE	TRUE	FALSE	FALSE	FALSE
	Regression Method:	Linear					
246-310-284(4)(c)				Year 1	Year 2	Year 3	Year 4
				2011	2012	2013	2014
Projected Resident Incenter Patients	from 246-310-284(4)(b)			28.40	27.40	26.40	25.40
Station Need for Patients	Divide Resident Incenter Patients by 3.2			8.8750	8.5625	8.2500	7.9375
	Rounded to next whole number			9	9	9	8
246-310-284(4)(d)	subtract (4)(c) from approved stations						
Existing CN Approved Stations				8	8	8	8
Results of (4)(c)above			-	9	9	9	8
Net Station Need				-1	-1	-1	0
Negative number indicates need for stations							
246-310-284(5)							
Name of Center	# of Stations	Patients	Utilization (Patients per Station)				
Central Washington	8	0	0.00				
DaVita	8						
Total	8	0					
Source: Northwest Renal Network data 2005-2010							
Most recent year-end data: 2010 year-end data as of 02/16/2011							
Most recent quarterly data as of the 1st day of application submission period: 4th quarter 2010 as of 02/16/2010							

x	y	Linear
2006	30	33
2007	36	32
2008	33	31
2009	30	30
2010	28	29
2011		28.400
2012		27.400
2013		26.400
2014		25.400



SUMMARY OUTPUT

<i>Regression Statistics</i>	
Multiple R	0.505076272
R Square	0.255102041
Adjusted R Square	0.006802721
Standard Error	3.119829055
Observations	5

ANOVA					
	<i>df</i>	<i>SS</i>	<i>MS</i>	<i>F</i>	<i>Significance F</i>
Regression	1	10	10	1.02739726	0.385414341
Residual	3	29.2	9.733333333		
Total	4	39.2			

	<i>Coefficients</i>	<i>Standard Error</i>	<i>t Stat</i>	<i>P-value</i>	<i>Lower 95%</i>	<i>Upper 95%</i>	<i>Lower 95.0%</i>	<i>Upper 95.0%</i>
Intercept	2039.4	1981.046249	1.029456027	0.379000736	-4265.173314	8343.973314	-4265.173314	8343.973314
X Variable 1	-1	0.986576572	-1.013606068	0.385414341	-4.139726968	2.139726968	-4.139726968	2.139726968

RESIDUAL OUTPUT

<i>Observation</i>	<i>Predicted Y</i>	<i>Residuals</i>
1	33.4	-3.4
2	32.4	3.6
3	31.4	1.6
4	30.4	-0.4
5	29.4	-1.4