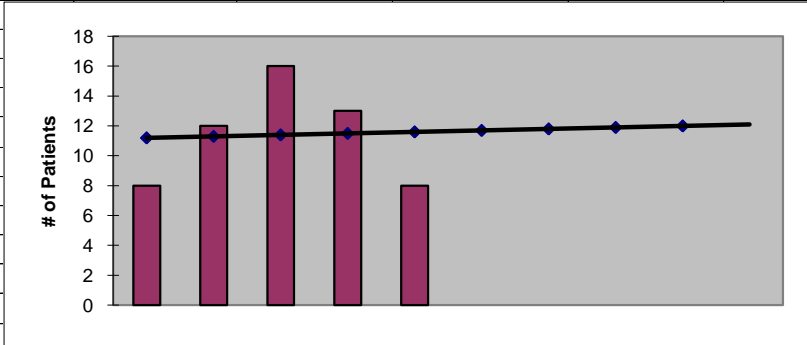




**2011**  
**Pend Oreille County**  
**ESRD Need Projection Methodology**

Planning Area		6 Year Utilization Data - Resident Incenter Patients					
		2005	2006	2007	2008	2009	2010
Pend Oreille		12	13	18	21	17	10
Less 99009 to Spok1		-4	-5	-6	-5	-4	-2
<b>TOTALS</b>		<b>8</b>	<b>8</b>	<b>12</b>	<b>16</b>	<b>13</b>	<b>8</b>
<b>246-310-284(4)(a)</b>	Rate of Change		0.00%	50.00%	33.33%	-18.75%	-38.46%
	6% Growth or Greater?		FALSE	TRUE	TRUE	FALSE	FALSE
	Regression Method:	Linear					
<b>246-310-284(4)(c)</b>				Year 1	Year 2	Year 3	Year 4
				2011	2012	2013	2014
Projected Resident Incenter Patients	from 246-310-284(4)(b)			11.70	11.80	11.90	12.00
Station Need for Patients	Divide Resident Incenter Patients by 3.2			3.6563	3.6875	3.7188	3.7500
	Rounded to next whole number			4	4	4	4
<b>246-310-284(4)(d)</b>	subtract (4)(c) from approved stations						
Existing CN Approved Stations				6	6	6	6
Results of (4)(c) above				-4	-4	-4	-4
Net Station Need				2	2	2	2
Negative number indicates need for stations							
<b>246-310-284(5)</b>							
Name of Center	# of Stations	Patients	Utilization (Patients per Station)				
FMC Pend Oreille	6	0	0.00				
<b>Total</b>	<b>6</b>	<b>0</b>					
Source: Northwest Renal Network data 2005-2010							
Most recent year-end data: 2010 year-end data as of 02/16/2011							
Most recent quarterly data as of the 1st day of application submission period: 4th quarter 2010 as of 02/16/2010							

x	y	Linear
2006	8	11
2007	12	11
2008	16	11
2009	13	12
2010	8	12
2011		11.700
2012		11.800
2013		11.900
2014		12.000



**SUMMARY OUTPUT**

<i>Regression Statistics</i>	
Multiple R	0.046028731
R Square	0.002118644
Adjusted R Square	-0.330508475
Standard Error	3.962322551
Observations	5

<b>ANOVA</b>					
	<i>df</i>	<i>SS</i>	<i>MS</i>	<i>F</i>	<i>Significance F</i>
Regression	1	0.1	0.1	0.006369427	0.9414151
Residual	3	47.1	15.7		
Total	4	47.2			

	<i>Coefficients</i>	<i>Standard Error</i>	<i>t Stat</i>	<i>P-value</i>	<i>Lower 95%</i>	<i>Upper 95%</i>	<i>Lower 95.0%</i>	<i>Upper 95.0%</i>
Intercept	-189.4	2516.017412	-0.075277698	0.944732539	-8196.490317	7817.690317	-8196.490317	7817.690317
X Variable 1	0.1	1.252996409	0.079808688	0.9414151	-3.887593791	4.087593791	-3.887593791	4.087593791

**RESIDUAL OUTPUT**

<i>Observation</i>	<i>Predicted Y</i>	<i>Residuals</i>
1	11.2	-3.2
2	11.3	0.7
3	11.4	4.6
4	11.5	1.5
5	11.6	-3.6