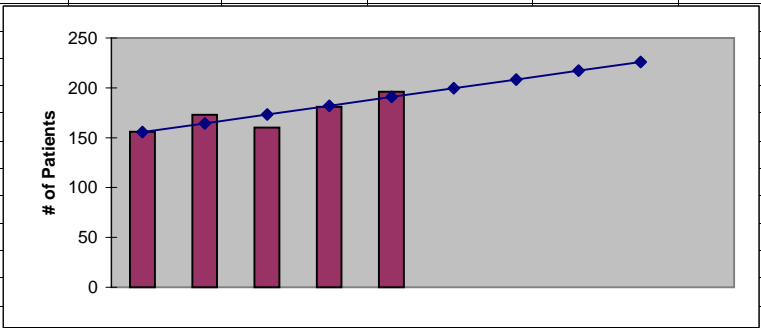


Spokane County Planning Area One							
ESRD Need Projection Methodology							
	Planning Area	6 Year Utilization Data - Resident Incenter Patients					
	Spokane (1)	2002	2003	2004	2005	2006	2007
	99001	2	3	3	3	3	10
	99004	5	6	8	9	10	11
	99011	0	0	1	0	0	0
	99012	1	0	0	0	0	0
	99016	4	8	5	5	4	4
	99018	0	0	0	0	0	0
	99019	2	2	2	1	4	3
	99022	5	4	6	6	6	8
	99023	0	0	0	0	0	0
	99030	1	1	1	1	2	0
	99031	0	0	0	0	0	0
	99036	0	0	0	0	0	0
	99037	4	7	6	5	6	6
	99201	15	19	18	16	16	21
	99202	20	24	31	22	21	25
	99203	10	4	9	8	9	14
	99204	14	10	9	11	10	9
	99206	27	28	33	34	40	33
	99212	11	9	9	5	12	13
	99216	14	14	19	17	20	19
	99223	9	13	11	11	16	14
	99224	6	4	2	6	2	6
	TOTALS	150	156	173	160	181	196
246-310-284(4)(a)	Rate of Change		4.00%	10.90%	-7.51%	13.13%	8.29%
	6% Growth or Greater?		FALSE	TRUE	FALSE	TRUE	TRUE
	Regression Method:	Linear					
246-310-284(4)(c)				Year 1	Year 2	Year 3	Year 4
				2008	2009	2010	2011
Projected Resident Incenter Patients	from 246-310-284(4)(b)			199.60	208.40	217.20	226.00
Station Need for Patients	Divide Resident Incenter Patients by 4.8			41.5833	43.4167	45.2500	47.0833
	Rounded to next whole number			42	44	46	48
246-310-284(4)(d)	subtract (4)(c) from approved stations						
Existing CN Approved Stations				69	69	69	69
Results of (4)(c) above			-	42	44	46	48
Net Station Need				27	25	23	21
Negative number indicates need for stations							
246-310-284(5)							
Name of Center	# of Stations	# of Patients		Utilization (Patients per Station)			
NRI Downtown Spokane	12	47	3.92				
NRI Spokane Valley	10	38	3.80				
Spokane Kidney Center	27	89	3.30				
Valley Dialysis Unit	20	73	3.65				
Total	69	247					
Source: Northwest Renal Network data 2002-2007							
Most recent year-end data: 2007 year-end data as of 01/21/2008							
Most recent quarterly data as of the 1st day of application submission period: 4th quarter 2007 as of 01/21/2008							

Spokane County Planning Area One
ESRD Need Projection Methodology

x	y	Linear
2003	156	156
2004	173	164
2005	160	173
2006	181	182
2007	196	191
2008		199.60
2009		208.40
2010		217.20
2011		226.00



SUMMARY OUTPUT

Regression Statistics	
Multiple R	0.858465092
R Square	0.736962314
Adjusted R Square	0.649283086
Standard Error	9.598611011
Observations	5

ANOVA

	df	SS	MS	F	Significance F
Regression	1	774.4	774.4	8.405209841	0.062544236
Residual	3	276.4	92.13333333		
Total	4	1050.8			

	Coefficients	Standard Error	t Stat	P-value	Lower 95%	Upper 95%	Lower 95.0%	Upper 95.0%
Intercept	-17470.8	6085.872884	-2.870713919	0.064012926	-36838.76367	1897.163672	-36838.76367	1897.163672
X Variable 1	8.8	3.035347317	2.899173993	0.062544236	-0.859829852	18.45982985	-0.859829852	18.45982985

RESIDUAL OUTPUT

Observation	Predicted Y	Residuals
1	155.6	0.4
2	164.4	8.6
3	173.2	-13.2
4	182	-1
5	190.8	5.2