

East King Acute Care Bed Need  
 Swedish Population and Service Area  
 Appendix 1

<b>1996-2002 HSA TOTAL NUMBER OF PATIENT DAYS</b>									
	<b>1996</b>	<b>1997</b>	<b>1998</b>	<b>1999</b>	<b>2000</b>	<b>2001</b>	<b>2002</b>	<b>2003</b>	<b>8-YEAR TOTAL</b>
<b>HSA #1</b>	1,185,296	1,216,945	1,231,384	1,260,919	1,309,677	1,361,082	1,370,268	1,385,250	<b>10,320,821</b>
<b>East King</b>	93,798	100,448	105,117	107,374	117,204	117,601	114,787	119,269	<b>875,598</b>
<b>STATEWIDE TOTAL</b>	<b>1,851,706</b>	<b>1,895,198</b>	<b>1,891,585</b>	<b>1,954,098</b>	<b>2,034,921</b>	<b>2,120,316</b>	<b>2,121,795</b>	<b>2,147,636</b>	<b>16,017,255</b>

East King Acute Care Bed Need  
Swedish Population and Service Area  
Appendix 2

<b>1996-2002 HSA TOTAL NUMBER OF PATIENT DAYS</b>									
	<b>1996</b>	<b>1997</b>	<b>1998</b>	<b>1999</b>	<b>2000</b>	<b>2001</b>	<b>2002</b>	<b>2003</b>	<b>8-YEAR TOTAL</b>
<b>HSA #1</b>	1,185,296	1,216,945	1,231,384	1,260,919	1,309,677	1,361,082	1,370,268	1,385,250	<b>10,320,821</b>
<b>East King</b>	93,798	100,448	105,117	107,374	117,204	117,601	114,787	119,269	<b>875,598</b>
<b>STATEWIDE TOTAL</b>	<b>1,851,706</b>	<b>1,895,198</b>	<b>1,891,585</b>	<b>1,954,098</b>	<b>2,034,921</b>	<b>2,120,316</b>	<b>2,121,795</b>	<b>2,147,636</b>	<b>16,017,255</b>
<b>1996-2002 HSA TOTAL NUMBER OF PSYCHIATRIC PATIENT DAYS</b>									
	<b>1996</b>	<b>1997</b>	<b>1998</b>	<b>1999</b>	<b>2000</b>	<b>2001</b>	<b>2002</b>	<b>2003</b>	<b>8-YEAR TOTAL</b>
<b>HSA #1</b>	91	81	568	485	412	578	553	810	<b>3,578</b>
<b>East King</b>	91	81	183	221	119	146	117	119	<b>1,077</b>
<b>STATEWIDE TOTAL</b>	<b>132</b>	<b>107</b>	<b>688</b>	<b>543</b>	<b>456</b>	<b>610</b>	<b>589</b>	<b>985</b>	<b>4,110</b>
<b>HSA #1 Hospitals include: BHC Fairfax in Kirkland, West Seattle Psych Hospital in Seattle, and Puget Sound Behavioral Health in Tacoma</b>									
<b>1996-2002 HSA TOTAL NUMBER OF PATIENT DAYS MINUS PSYCH DAYS</b>									
	<b>1996</b>	<b>1997</b>	<b>1998</b>	<b>1999</b>	<b>2000</b>	<b>2001</b>	<b>2002</b>	<b>2003</b>	<b>8-YEAR TOTAL</b>
<b>HSA #1</b>	1,185,205	1,216,864	1,230,816	1,260,434	1,309,265	1,360,504	1,369,715	1,384,440	<b>10,317,243</b>
<b>East King</b>	93,707	100,367	104,934	107,153	117,085	117,455	114,670	119,150	<b>874,521</b>
<b>STATEWIDE TOTAL</b>	<b>1,851,574</b>	<b>1,895,091</b>	<b>1,890,897</b>	<b>1,953,555</b>	<b>2,034,465</b>	<b>2,119,706</b>	<b>2,121,206</b>	<b>2,146,651</b>	<b>16,013,145</b>

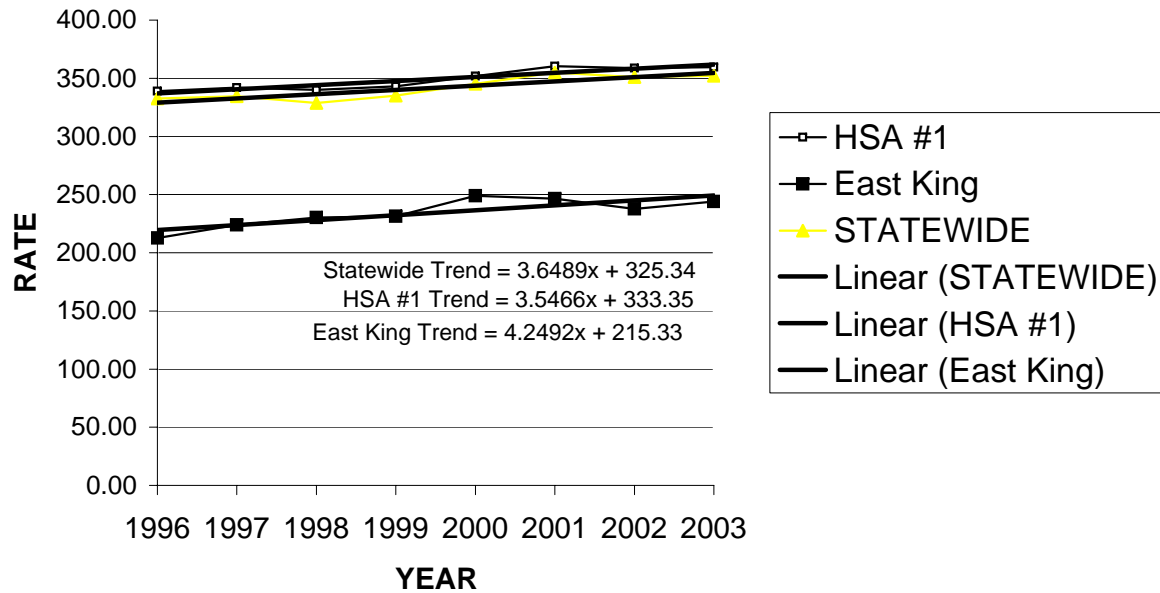
East King Acute Care Bed Need  
Swedish Population and Service Area  
Appendix 3

<b>1996-2002 HSA TOTAL NUMBER OF PATIENT DAYS MINUS PSYCH DAYS</b>									
	<b>1996</b>	<b>1997</b>	<b>1998</b>	<b>1999</b>	<b>2000</b>	<b>2001</b>	<b>2002</b>	<b>2003</b>	<b>8-YEAR TOTAL</b>
<b>HSA #1</b>	1,185,205	1,216,864	1,230,816	1,260,434	1,309,265	1,360,504	1,369,715	1,384,440	<b>10,317,243</b>
<b>East King</b>	93,707	100,367	104,934	107,153	117,085	117,455	114,670	119,150	<b>874,521</b>
<b>STATEWIDE TOTAL</b>	<b>1,851,574</b>	<b>1,895,091</b>	<b>1,890,897</b>	<b>1,953,555</b>	<b>2,034,465</b>	<b>2,119,706</b>	<b>2,121,206</b>	<b>2,146,651</b>	<b>16,013,145</b>
<b>TOTAL POPULATIONS BY HSA</b>									
	<b>1996</b>	<b>1997</b>	<b>1998</b>	<b>1999</b>	<b>2000</b>	<b>2001</b>	<b>2002</b>	<b>2003</b>	<b>8-YEAR TOTAL</b>
<b>HSA #1</b>	3,496,634	3,558,002	3,620,228	3,673,734	3,721,753	3,776,100	3,818,500	3,849,500	<b>29,514,451</b>
<b>East King</b>	440,857	448,245	455,633	463,021	470,409	476,292	482,175	488,058	<b>3,724,690</b>
<b>STATEWIDE TOTAL</b>	<b>5,567,764</b>	<b>5,663,763</b>	<b>5,750,033</b>	<b>5,830,835</b>	<b>5,894,121</b>	<b>5,974,900</b>	<b>6,041,710</b>	<b>6,098,400</b>	<b>46,821,526</b>
<b>USE RATE PER 1,000 BY HSA</b>									
	<b>1996</b>	<b>1997</b>	<b>1998</b>	<b>1999</b>	<b>2000</b>	<b>2001</b>	<b>2002</b>	<b>2003</b>	<b>7-YEAR TOTAL</b>
<b>HSA #1</b>	338.96	342.01	339.98	343.09	351.79	360.29	358.70	359.64	<b>2,794.47</b>
<b>East King</b>	212.56	223.91	230.30	231.42	248.90	246.60	237.82	244.13	<b>1,875.65</b>
<b>STATEWIDE</b>	<b>332.55</b>	<b>334.60</b>	<b>328.85</b>	<b>335.04</b>	<b>345.17</b>	<b>354.77</b>	<b>351.09</b>	<b>352.00</b>	<b>2,734.07</b>

East King Acute Care Bed Need  
 Swedish Population and Service Area  
 Appendix 4

USE RATE PER 1,000 BY HSA									
	1996	1997	1998	1999	2000	2001	2002	2003	7-YEAR TOTAL
<b>HSA #1</b>	338.96	342.01	339.98	343.09	351.79	360.29	358.70	359.64	<b>2,794.47</b>
<b>East King</b>	212.56	223.91	230.30	231.42	248.90	246.60	237.82	244.13	<b>1,875.65</b>
<b>STATEWIDE</b>	332.55	334.60	328.85	335.04	345.17	354.77	351.09	352.00	<b>2,734.07</b>

**USE RATES FOR HSA #1  
 AND EAST KING PLANNING AREA**



East King Acute Care Bed Need  
 Swedish Population and Service Area  
 Appendices 5 & 6

STEP #5						
2003 DATA						
	# of Pat days	Less OOS	TOTAL LESS OOS			
<b>East King Hospitals</b>				%		
0-64	70,667	697	<b>69,970</b>	0.99%		
65+	48,483	1,091	<b>47,392</b>	2.25%		
<b>TOTAL</b>	<b>119,150</b>	<b>1,788</b>	<b>117,362</b>			
<b>WA - EK</b>						
0-64	1,189,170	68,763	<b>1,120,407</b>	5.78%		
65+	839,316	40,632	<b>798,684</b>	4.84%		
<b>TOTAL</b>	<b>2,028,486</b>	<b>109,395</b>	<b>1,919,091</b>			
	<b>TO East King</b>	<b>TO WA - EK</b>		<b>TOTAL # OF DAYS FOR RESIDENTS BY HSA (LESS PATS FROM OOS)</b>	<b>ADD DAYS PROVIDED IN OREGON</b>	<b>TOTAL # OF DAYS FOR RESIDENTS BY HSA</b>
<b>FROM East King</b>						
0-64	41,899	35,588		77,487	191	77,678
65+	34,462	15,848		50,310	134	50,444
<b>TOTAL</b>	<b>76,361</b>	<b>51,436</b>		<b>127,797</b>	<b>325</b>	<b>128,122</b>
<b>FROM WA - EK</b>						
0-64	28,071	1,084,819		1,112,890	41,054	1,153,944
65+	12,930	782,836		795,766	15,957	811,723
<b>TOTAL</b>	<b>41,001</b>	<b>1,867,655</b>		<b>1,908,656</b>	<b>57,011</b>	<b>1,965,667</b>
	<b>117,362</b>	<b>1,919,091</b>				
<b>MARKET SHARE</b>						
<b>PERCENTAGE OF PATIENT DAYS</b>						
	<b>TO East King</b>	<b>TO WA - EK</b>	<b>TO OREGON</b>			
<b>% OF East King RESIDENTS</b>						
0-64	53.94%	45.81%	0.25%			
65+	68.32%	31.42%	0.27%			
<b>TOTAL</b>						
<b>% OF WA - EK RESIDENTS</b>						
0-64	2.43%	94.01%	3.56%			
65+	1.59%	96.44%	1.97%			
<b>TOTAL</b>						
<b>2003 POPULATIONS BY PLANNING AREA</b>						
	<b>East King</b>	<b>WA - EK</b>				
0-64	438,175	4,971,170				
65+	49,883	638,423				
<b>TOTAL</b>	<b>488,058</b>	<b>5,609,593</b>				
<b>STEP #6</b>						
<b>USE RATE BY PLANNING AREA</b>						
	<b>East King</b>	<b>WA - EK</b>				
<b>USE RATES</b>						
0-64	177.28	232.13				
65+	1,011.25	1,271.45				

East King Acute Care Bed Need  
 Swedish Population and Service Area  
 Appendix 7A

USE RATE BY PLANNING AREA FROM STEP 6					
	<b>East King</b>				
YEAR 2003 USE RATES					
0-64	177.28				
65+	1,011.25				
PROJECTED POPULATION	Using Revised East King Projections				
YEAR 2010	<b>East King</b>				
0-64	463,248				
65+	60,624				
<b>TOTALS</b>	<b>523,872</b>				
PROJECTED 2010 USE RATE					
	<b>East King</b>				
USE RATES*					
0-64 using Area Trend	207.02				
0-64 using Statewide Trend	<b>202.82</b>				
65+ using Area Trend	1,040.99				
65+ using Statewide Trend	<b>1,036.79</b>				
*Projected by applying either HSA trend or Statewide trend, whichever trend would result in the smaller adjustment					
<b>Bold Print</b> indicates use rate closest to current value					

East King Acute Care Bed Need  
 Swedish Population and Service Area  
 Appendix 8

USE RATE BY HSA FROM STEP 7A	
	<b>East King</b>
USE RATES	
0-64	202.82
65+	1,036.79
PROJECTED POPULATION	
YEAR 2010	<b>East King</b>
0-64	463,248
65+	60,624
<b>TOTALS</b>	<b>523,872</b>
PROJECTED # OF PATIENT DAYS	
YEAR 2010	<b>East King</b>
0-64	93,955
65+	62,854
<b>TOTALS</b>	<b>156,810</b>

East King Acute Care Bed Need  
Swedish Population and Service Area  
Appendix 9

PROJECTED # OF PATIENT DAYS				
YEAR 2010	<b>East King</b>	<b>WA - EK</b>	<b>TOTAL</b>	
0-64	93,955	1,374,949	1,468,904	
65+	62,854	963,040	1,025,894	
<b>TOTALS</b>	<b>156,810</b>	<b>2,337,988</b>	<b>2,494,798</b>	
<b>MARKET SHARE % OF PATIENT DAYS FROM STEP 1</b>				
% OF East King RESIDENTS	<b>East King</b>	<b>WA - EK</b>	<b>TO OREGON</b>	
0-64	53.94%	45.81%	0.25%	
65+	68.32%	31.42%	0.27%	
% OF WA - EK RESIDENTS	<b>East King</b>	<b>WA - EK</b>	<b>TO OREGON</b>	
0-64	2.43%	94.01%	3.56%	
65+	1.59%	96.44%	1.97%	
# OF East King RESIDENTS	<b>East King</b>	<b>WA - EK</b>	<b>TO OREGON</b>	<b>Total</b>
0-64	50,679	43,045	231	93,955
65+	42,940	19,747	167	62,854
				156,810
# OF WA - EK RESIDENTS	<b>East King</b>	<b>WA - EK</b>	<b>TO OREGON</b>	<b>Total</b>
0-64	33,447	1,292,585	48,917	1,374,949
65+	15,340	928,768	18,932	963,040
				2,337,988
# OF RESIDENT PAT DAYS PROJECTED IN East King				
0-64	84,126			
65+	58,281			
# OF RESIDENT PAT DAYS PROJECTED IN WA - EK				
0-64	1,335,630			
65+	948,515			
# OF WA RESIDENT PAT DAYS PROJECTED IN OREGON				
0-64	49,148			
65+	19,099			
<b>OUT OF STATE % OF PATIENT DAYS FROM STEP 1</b>				
East King	%			
0-64	1.00%			
65+	2.30%			
WA - EK				
0-64	6.14%			
65+	5.09%			
PROJECTED # OF PATIENT DAYS 2007 PLUS OUT OF STATE RESIDENTS				
<b>East King</b>				
0-64	84,964	0.904303		
65+	59,622	0.948581		
<b>TOTAL</b>	<b>144,586</b>			

East King Acute Care Bed Need  
Swedish Population and Service Area  
Appendix 10a

	2003	2004	2005	2006	2007	2008	2009	2010	2011	2012	2013	2014	2015	2016	2017	2018	2019	2020	2021	2022	2023	2024	2025
<b>East King Planning Area</b>																							
<b>Population 0-64(1)</b>	438,175	442,030	445,885	449,741	453,596	457,451	460,350	463,248	465,103	466,958	468,812	470,667	472,522	473,970	475,418	476,866	478,314	479,762	480,989	482,216	483,444	484,674	485,898
<b>0-64 Use Rate(2)</b>	177.28	180.93	184.57	188.22	191.87	195.52	199.17	202.82	206.47	210.12	213.77	217.41	221.06	224.71	228.36	232.01	235.66	239.31	242.96	246.61	250.25	253.90	257.55
<b>Population 65+(1)</b>	49,883	51,602	53,321	55,040	56,759	58,478	59,551	60,624	62,929	65,235	67,540	69,845	72,151	74,789	77,428	80,066	82,705	85,343	87,940	90,536	93,132	95,729	98,325
<b>65+ Use Rate(2)</b>	1,011.25	1014.90	1018.54	1022.19	1025.84	1029.49	1033.14	1036.79	1040.44	1044.09	1047.74	1051.38	1055.03	1058.68	1062.33	1065.98	1069.63	1073.28	1076.93	1080.58	1084.22	1087.87	1091.52
<b>Total Population</b>	488,058	493,632	499,206	504,781	510,355	515,929	519,901	523,872	528,032	532,193	536,352	540,512	544,673	548,759	552,846	556,932	561,019	565,105	568,929	572,752	576,576	580,403	584,223
<b>Total East King Res Days</b>	128,122	132,345	136,609	140,913	145,258	149,644	153,212	156,810	161,502	166,226	170,980	175,764	180,579	185,684	190,821	195,986	201,182	206,407	211,564	216,748	221,960	227,201	232,468
<b>Total Days in East King Hospitals (3)</b>	118,095	121,999	125,940	129,919	133,935	137,989	141,274	144,586	148,946	153,335	157,751	162,195	166,669	171,421	176,202	181,010	185,847	190,711	195,512	200,338	205,190	210,070	214,974
<b>Available Beds(4)</b>																							
<b>Evergreen</b>	212	212	212	212	227	227	227	227	227	227	227	227	227	227	227	227	227	227	227	227	227	227	227
<b>Group Health - Eastside</b>	132	132	132	132	132	0	0	0	0	0	0	0	0	0	0	0	0	0	0	0	0	0	0
<b>Overlake</b>	220	220	220	220	300	300	300	300	300	300	300	300	300	300	300	300	300	300	300	300	300	300	300
<b>Snoqualmie</b>	18	18	18	18	18	18	18	18	18	18	18	18	18	18	18	18	18	18	18	18	18	18	18
<b>Total</b>	<b>582</b>	<b>582</b>	<b>582</b>	<b>582</b>	<b>677</b>	<b>545</b>	<b>545</b>	<b>545</b>	<b>545</b>	<b>545</b>	<b>545</b>	<b>545</b>	<b>545</b>	<b>545</b>	<b>545</b>	<b>545</b>	<b>545</b>	<b>545</b>	<b>545</b>	<b>545</b>	<b>545</b>	<b>545</b>	<b>545</b>
<b>Wtd Occ Std(5)</b>	68.25%	68.25%	68.25%	68.25%	70.71%	72.09%	72.09%	72.09%	72.09%	72.09%	72.09%	72.09%	72.09%	72.09%	72.09%	72.09%	72.09%	72.09%	72.09%	72.09%	72.09%	72.09%	72.09%
<b>Gross Bed Need</b>	<b>474.08</b>	<b>489.75</b>	<b>505.57</b>	<b>521.55</b>	<b>518.95</b>	<b>524.40</b>	<b>536.89</b>	<b>549.48</b>	<b>566.04</b>	<b>582.72</b>	<b>599.51</b>	<b>616.40</b>	<b>633.40</b>	<b>651.46</b>	<b>669.63</b>	<b>687.90</b>	<b>706.28</b>	<b>724.76</b>	<b>743.01</b>	<b>761.35</b>	<b>779.79</b>	<b>798.34</b>	<b>816.97</b>
<b>Net Bed Need/Surplus (Negative = Surplus)</b>	<b>-107.92</b>	<b>-92.25</b>	<b>-76.43</b>	<b>-60.45</b>	<b>-158.05</b>	<b>-20.60</b>	<b>-8.11</b>	<b>4.48</b>	<b>21.04</b>	<b>37.72</b>	<b>54.51</b>	<b>71.40</b>	<b>88.40</b>	<b>106.46</b>	<b>124.63</b>	<b>142.90</b>	<b>161.28</b>	<b>179.76</b>	<b>198.01</b>	<b>216.35</b>	<b>234.79</b>	<b>253.34</b>	<b>271.97</b>
<b>(1) Source: Applicant</b>																							
<b>(2) Source: 2003 CHARS Data for East King Planning Area Residents</b>																							
<b>(3) Adjusted to reflect referral patterns into and out of East King Planning Area to other planning areas and Oregon</b>																							
<b>(4) Source: 2003 Bed supply survey, OHPDS Data</b>																							
<b>(5) Calculated per 1987 Washington State Health Plan as the sum , across all hospitals in the planning area, of each hospital's occupancy rate times that hospital's percentage of total beds in the area</b>																							

East King Acute Care Bed Need  
Swedish Population and Service Area  
Appendix 10b

	2003	2004	2005	2006	2007	2008	2009	2010	2011	2012	2013	2014	2015	2016	2017	2018	2019	2020	2021	2022	2023	2024	2025
<b>East King Planning Area</b>																							
<b>Population 0-64(1)</b>	438,175	442,030	445,885	449,741	453,596	457,451	460,350	463,248	465,103	466,958	468,812	470,667	472,522	473,970	475,418	476,866	478,314	479,762	480,989	482,216	483,444	484,674	485,898
<b>0-64 Use Rate(2)</b>	177.28	180.93	184.57	188.22	191.87	195.52	199.17	202.82	206.47	210.12	213.77	217.41	221.06	224.71	228.36	232.01	235.66	239.31	242.96	246.61	250.25	253.90	257.55
<b>Population 65+(1)</b>	49,883	51,602	53,321	55,040	56,759	58,478	59,551	60,624	62,929	65,235	67,540	69,845	72,151	74,789	77,428	80,066	82,705	85,343	87,940	90,536	93,132	95,729	98,325
<b>65+ Use Rate(2)</b>	1,011.25	1014.90	1018.54	1022.19	1025.84	1029.49	1033.14	1036.79	1040.44	1044.09	1047.74	1051.38	1055.03	1058.68	1062.33	1065.98	1069.63	1073.28	1076.93	1080.58	1084.22	1087.87	1091.52
<b>Total Population</b>	488,058	493,632	499,206	504,781	510,355	515,929	519,901	523,872	528,032	532,193	536,352	540,512	544,673	548,759	552,846	556,932	561,019	565,105	568,929	572,752	576,576	580,403	584,223
<b>Total East King Res Days</b>	128,122	132,345	136,609	140,913	145,258	149,644	153,212	156,810	161,502	166,226	170,980	175,764	180,579	185,684	190,821	195,986	201,182	206,407	211,564	216,748	221,960	227,201	232,468
<b>Total Days in East King Hospitals (3)</b>	118,095	121,999	125,940	129,919	133,935	137,989	141,274	144,586	148,946	153,335	157,751	162,195	166,669	171,421	176,202	181,010	185,847	190,711	195,512	200,338	205,190	210,070	214,974
<b>Available Beds(4)</b>																							
<b>Evergreen</b>	212	212	212	212	227	227	227	227	227	227	227	227	227	227	227	227	227	227	227	227	227	227	227
<b>Group Health - Eastside</b>	132	132	132	132	132	0	0	0	0	0	0	0	0	0	0	0	0	0	0	0	0	0	0
<b>Overlake</b>	220	220	220	220	300	300	300	300	300	300	300	300	300	300	300	300	300	300	300	300	300	300	300
<b>Snoqualmie</b>	18	18	18	18	18	18	18	18	18	18	18	18	18	18	18	18	18	18	18	18	18	18	18
<b>SHS Issaquah</b>	0	0	0	0	0	0	80	80	80	120	120	120	120	175	175	175	175	175	175	175	175	175	175
<b>Total</b>	<b>582</b>	<b>582</b>	<b>582</b>	<b>582</b>	<b>677</b>	<b>545</b>	<b>625</b>	<b>625</b>	<b>625</b>	<b>665</b>	<b>665</b>	<b>665</b>	<b>665</b>	<b>720</b>	<b>720</b>	<b>720</b>	<b>720</b>	<b>720</b>	<b>720</b>	<b>720</b>	<b>720</b>	<b>720</b>	<b>720</b>
<b>Wtd Occ Std(5)</b>	68.25%	68.25%	68.25%	68.25%	70.71%	72.09%	70.54%	70.54%	70.54%	69.91%	70.81%	70.81%	70.81%	70.37%	70.37%	70.37%	70.37%	70.37%	70.37%	70.37%	70.37%	70.37%	70.37%
<b>Gross Bed Need</b>	<b>474.08</b>	<b>489.75</b>	<b>505.57</b>	<b>521.55</b>	<b>518.95</b>	<b>524.40</b>	<b>548.67</b>	<b>561.53</b>	<b>578.46</b>	<b>600.91</b>	<b>610.34</b>	<b>627.53</b>	<b>644.84</b>	<b>667.41</b>	<b>686.03</b>	<b>704.75</b>	<b>723.58</b>	<b>742.52</b>	<b>761.21</b>	<b>780.00</b>	<b>798.89</b>	<b>817.89</b>	<b>836.98</b>
<b>Net Bed Need/Surplus (Negative = Surplus)</b>	<b>-107.92</b>	<b>-92.25</b>	<b>-76.43</b>	<b>-60.45</b>	<b>-158.05</b>	<b>-20.60</b>	<b>-76.33</b>	<b>-63.47</b>	<b>-46.54</b>	<b>-64.09</b>	<b>-54.66</b>	<b>-37.47</b>	<b>-20.16</b>	<b>-52.59</b>	<b>-33.97</b>	<b>-15.25</b>	<b>3.58</b>	<b>22.52</b>	<b>41.21</b>	<b>60.00</b>	<b>78.89</b>	<b>97.89</b>	<b>116.98</b>
<b>(1) Source: Applicant</b>																							
<b>(2) Source: 2003 CHARS Data for East King Planning Area Residents</b>																							
<b>(3) Adjusted to reflect referral patterns into and out of East King Planning Area to other planning areas and Oregon</b>																							
<b>(4) Source: 2003 Bed supply survey, OHPDS Data</b>																							
<b>(5) Calculated per 1987 Washington State Health Plan as the sum , across all hospitals in the planning area, of each hospital's occupancy rate times that hospital's percentage of total beds in the area</b>																							

East King Acute Care Bed Need  
Swedish Population and Service Area  
Appendix 10c

	2003	2004	2005	2006	2007	2008	2009	2010	2011	2012	2013	2014	2015	2016	2017	2018	2019	2020	2021	2022	2023	2024	2025
<b>East King Planning Area</b>																							
<b>Population 0-64(1)</b>	438,175	442,030	445,885	449,741	453,596	457,451	460,350	463,248	465,103	466,958	468,812	470,667	472,522	473,970	475,418	476,866	478,314	479,762	480,989	482,216	483,444	484,674	485,898
<b>0-64 Use Rate(2)</b>	177.28	180.93	184.57	188.22	191.87	195.52	199.17	202.82	206.47	210.12	213.77	217.41	221.06	224.71	228.36	232.01	235.66	239.31	242.96	246.61	250.25	253.90	257.55
<b>Population 65+(1)</b>	49,883	51,602	53,321	55,040	56,759	58,478	59,551	60,624	62,929	65,235	67,540	69,845	72,151	74,789	77,428	80,066	82,705	85,343	87,940	90,536	93,132	95,729	98,325
<b>65+ Use Rate(2)</b>	1,011.25	1014.90	1018.54	1022.19	1025.84	1029.49	1033.14	1036.79	1040.44	1044.09	1047.74	1051.38	1055.03	1058.68	1062.33	1065.98	1069.63	1073.28	1076.93	1080.58	1084.22	1087.87	1091.52
<b>Total Population</b>	488,058	493,632	499,206	504,781	510,355	515,929	519,901	523,872	528,032	532,193	536,352	540,512	544,673	548,759	552,846	556,932	561,019	565,105	568,929	572,752	576,576	580,403	584,223
<b>Total East King Res Days</b>	128,122	132,345	136,609	140,913	145,258	149,644	153,212	156,810	161,502	166,226	170,980	175,764	180,579	185,684	190,821	195,986	201,182	206,407	211,564	216,748	221,960	227,201	232,468
<b>Total Days in East King Hospitals (3)</b>	118,095	121,999	125,940	129,919	133,935	137,989	141,274	144,586	148,946	153,335	157,751	162,195	166,669	171,421	176,202	181,010	185,847	190,711	195,512	200,338	205,190	210,070	214,974
<b>Available Beds(4)</b>																							
<b>Evergreen</b>	212	212	212	212	227	227	227	227	227	227	227	227	227	227	227	227	227	227	227	227	227	227	227
<b>Group Health - Eastside</b>	132	132	132	132	132	0	0	0	0	0	0	0	0	0	0	0	0	0	0	0	0	0	0
<b>Overlake</b>	220	220	220	220	300	300	300	300	300	300	300	300	300	300	300	300	300	300	300	300	300	300	300
<b>Snoqualmie</b>	18	18	18	18	18	18	18	18	18	18	18	18	18	18	18	18	18	18	18	18	18	18	18
<b>SHS Issaquah</b>	0	0	0	0	0	0	0	0	80	80	80	120	120	120	175	175	175	175	175	175	175	175	175
<b>Total</b>	<b>582</b>	<b>582</b>	<b>582</b>	<b>582</b>	<b>677</b>	<b>545</b>	<b>545</b>	<b>545</b>	<b>625</b>	<b>625</b>	<b>625</b>	<b>665</b>	<b>665</b>	<b>665</b>	<b>665</b>	<b>720</b>	<b>720</b>	<b>720</b>	<b>720</b>	<b>720</b>	<b>720</b>	<b>720</b>	<b>720</b>
<b>Wtd Occ Std(5)</b>	68.25%	68.25%	68.25%	68.25%	70.71%	72.09%	72.09%	72.09%	70.54%	70.54%	71.18%	70.81%	70.81%	70.81%	70.81%	70.37%	70.37%	70.37%	70.37%	70.37%	70.37%	70.37%	70.37%
<b>Gross Bed Need</b>	<b>474.08</b>	<b>489.75</b>	<b>505.57</b>	<b>521.55</b>	<b>518.95</b>	<b>524.40</b>	<b>536.89</b>	<b>549.48</b>	<b>578.46</b>	<b>595.51</b>	<b>607.15</b>	<b>627.53</b>	<b>644.84</b>	<b>663.23</b>	<b>681.73</b>	<b>704.75</b>	<b>723.58</b>	<b>742.52</b>	<b>761.21</b>	<b>780.00</b>	<b>798.89</b>	<b>817.89</b>	<b>836.98</b>
<b>Net Bed Need/Surplus (Negative = Surplus)</b>	<b>-107.92</b>	<b>-92.25</b>	<b>-76.43</b>	<b>-60.45</b>	<b>-158.05</b>	<b>-20.60</b>	<b>-8.11</b>	<b>4.48</b>	<b>-46.54</b>	<b>-29.49</b>	<b>-17.85</b>	<b>-37.47</b>	<b>-20.16</b>	<b>-1.77</b>	<b>16.73</b>	<b>-15.25</b>	<b>3.58</b>	<b>22.52</b>	<b>41.21</b>	<b>60.00</b>	<b>78.89</b>	<b>97.89</b>	<b>116.98</b>
<b>(1) Source: Applicant</b>																							
<b>(2) Source: 2003 CHARS Data for East King Planning Area Residents</b>																							
<b>(3) Adjusted to reflect referral patterns into and out of East King Planning Area to other planning areas and Oregon</b>																							
<b>(4) Source: 2003 Bed supply survey, OHPDS Data</b>																							
<b>(5) Calculated per 1987 Washington State Health Plan as the sum , across all hospitals in the planning area, of each hospital's occupancy rate times that hospital's percentage of total beds in the area</b>																							