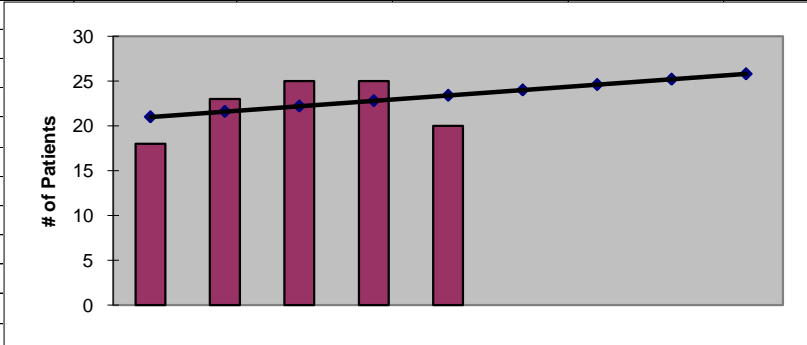




**2011  
Pacific County  
ESRD Need Projection Methodology**

Planning Area		6 Year Utilization Data - Resident Incenter Patients					
Pacific	2005	2006	2007	2008	2009	2010	
Pacific	25	18	23	25	25	20	
<b>TOTALS</b>	<b>25</b>	<b>18</b>	<b>23</b>	<b>25</b>	<b>25</b>	<b>20</b>	
<b>246-310-284(4)(a)</b>	<b>Rate of Change</b>		<b>-28.00%</b>	<b>27.78%</b>	<b>8.70%</b>	<b>0.00%</b>	<b>-20.00%</b>
	<b>6% Growth or Greater?</b>		<b>FALSE</b>	<b>TRUE</b>	<b>TRUE</b>	<b>FALSE</b>	<b>FALSE</b>
	<b>Regression Method:</b>	<b>Linear</b>					
<b>246-310-284(4)(c)</b>				<b>Year 1</b>	<b>Year 2</b>	<b>Year 3</b>	<b>Year 4</b>
				<b>2011</b>	<b>2012</b>	<b>2013</b>	<b>2014</b>
<b>Projected Resident Incenter Patients</b>	from 246-310-284(4)(b)			24.00	24.60	25.20	25.80
<b>Station Need for Patients</b>	<b>Divide Resident Incenter Patients by 3.2</b>			7.5000	7.6875	7.8750	8.0625
	<b>Rounded to next whole number</b>			<b>8</b>	<b>8</b>	<b>8</b>	<b>9</b>
<b>246-310-284(4)(d)</b>	subtract (4)(c) from approved stations						
<b>Existing CN Approved Stations</b>				10	10	10	10
<b>Results of (4)(c) above</b>			-	8	8	8	9
<b>Net Station Need</b>				2	2	2	1
Negative number indicates need for stations							
<b>246-310-284(5)</b>							
<b>Name of Center</b>	<b># of Stations</b>	<b>Patients</b>	<b>Utilization (Patients per Station)</b>				
DaVita Sea View	10	15	1.50				
<b>Total</b>	<b>10</b>	<b>15</b>					
Source: Northwest Renal Network data 2005-2010							
Most recent year-end data: 2010 year-end data as of 02/16/2011							
Most recent quarterly data as of the 1st day of application submission period: 4th quarter 2010 as of 02/16/2010							

x	y	Linear
2006	18	21
2007	23	22
2008	25	22
2009	25	23
2010	20	23
2011		24.000
2012		24.600
2013		25.200
2014		25.800



**SUMMARY OUTPUT**

<i>Regression Statistics</i>	
Multiple R	0.30460385
R Square	0.092783505
Adjusted R Square	-0.209621993
Standard Error	3.425395354
Observations	5

<b>ANOVA</b>					
	<i>df</i>	<i>SS</i>	<i>MS</i>	<i>F</i>	<i>Significance F</i>
Regression	1	3.6	3.6	0.306818182	0.618250128
Residual	3	35.2	11.73333333		
Total	4	38.8			

	<i>Coefficients</i>	<i>Standard Error</i>	<i>t Stat</i>	<i>P-value</i>	<i>Lower 95%</i>	<i>Upper 95%</i>	<i>Lower 95.0%</i>	<i>Upper 95.0%</i>
Intercept	-1182.6	2175.076422	-0.543705034	0.624446451	-8104.663921	5739.463921	-8104.663921	5739.463921
X Variable 1	0.6	1.083205121	0.553911709	0.618250128	-2.847242134	4.047242134	-2.847242134	4.047242134

**RESIDUAL OUTPUT**

<i>Observation</i>	<i>Predicted Y</i>	<i>Residuals</i>
1	21	-3
2	21.6	1.4
3	22.2	2.8
4	22.8	2.2
5	23.4	-3.4