

Spokane County Planning Area Two
ESRD Need Projection Methodology

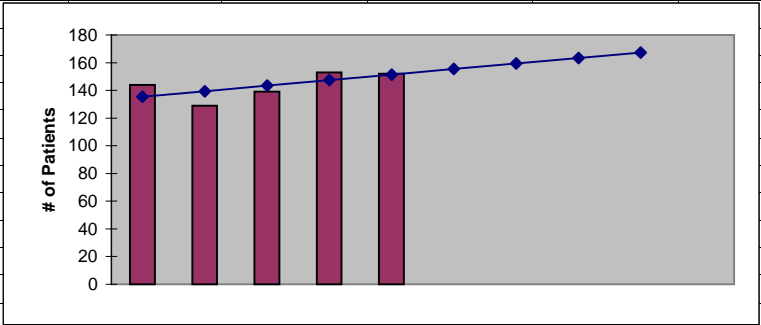
Planning Area	6 Year Utilization Data - Resident Incenter Patients					
Spokane (2)	2002	2003	2004	2005	2006	2007
99003	2	2	3	2	3	6
99005	2	3	2	2	1	1
99006	11	10	8	8	9	7
99009	3	2	2	4	5	6
99021	4	4	5	3	6	5
99025	2	1	1	0	0	3
99026	3	1	0	2	5	3
99027	5	5	6	6	7	4
99205	31	34	26	35	33	36
99207	32	41	35	31	27	30
99208	26	24	18	19	24	20
99217	7	7	10	11	17	16
99218	11	10	13	16	16	15
99251	0	0	0	0	0	0
TOTALS	139	144	129	139	153	152
246-310-284(4)(a)	Rate of Change	3.60%	-10.42%	7.75%	10.07%	-0.65%
	6% Growth or Greater?	FALSE	FALSE	TRUE	TRUE	FALSE
	Regression Method:	Linear				
246-310-284(4)(c)			Year 1 2008	Year 2 2009	Year 3 2010	Year 4 2011
Projected Resident Incenter Patients	from 246-310-284(4)(b)		155.40	159.40	163.40	167.40
Station Need for Patients	Divide Resident Incenter Patients by 4.8		32.3750	33.2083	34.0417	34.8750
	Rounded to next whole number		33	34	35	35
246-310-284(4)(d)	subtract (4)(c) from approved stations					
Existing CN Approved Stations			36	36	36	36
Results of (4)(c) above		-	33	34	35	35
Net Station Need			3	2	1	1
Negative number indicates need for stations						
246-310-284(5)						
Name of Center	# of Stations	# of Patients	Utilization (Patients per Station)			
NRI North Spokane	12	56	4.67			
Northpointe Dialysis Un	24	105	4.38			
Total	36	161				
Source: Northwest Renal Network data 2002-2007						
Most recent year-end data: 2007 year-end data as of 01/21/2008						
Most recent quarterly data as of the 1st day of application submission period: 4th quarter 2007 as of 01/21/2008						

Spokane County Planning Area Two
ESRD Need Projection Methodology

x	y	Linear
2003	144	135
2004	129	139
2005	139	143
2006	153	147
2007	152	151
2008		155.40
2009		159.40
2010		163.40
2011		167.40

SUMMARY OUTPUT

Regression Statistics	
Multiple R	0.637900932
R Square	0.406917599
Adjusted R Square	0.209223466
Standard Error	8.816650914
Observations	5



ANOVA

	df	SS	MS	F	Significance F
Regression	1	160	160	2.058319039	0.246860471
Residual	3	233.2	77.73333333		
Total	4	393.2			

	Coefficients	Standard Error	t Stat	P-value	Lower 95%	Upper 95%	Lower 95.0%	Upper 95.0%
Intercept	-7876.6	5590.081384	-1.409031364	0.253590925	-25666.73384	9913.533845	-25666.73384	9913.533845
X Variable 1	4	2.788069822	1.4346843	0.246860471	-4.872882503	12.8728825	-4.872882503	12.8728825

RESIDUAL OUTPUT

Observation	Predicted Y	Residuals
1	135.4	8.6
2	139.4	-10.4
3	143.4	-4.4
4	147.4	5.6
5	151.4	0.6