

FOR EDUCATIONAL PURPOSES ONLY

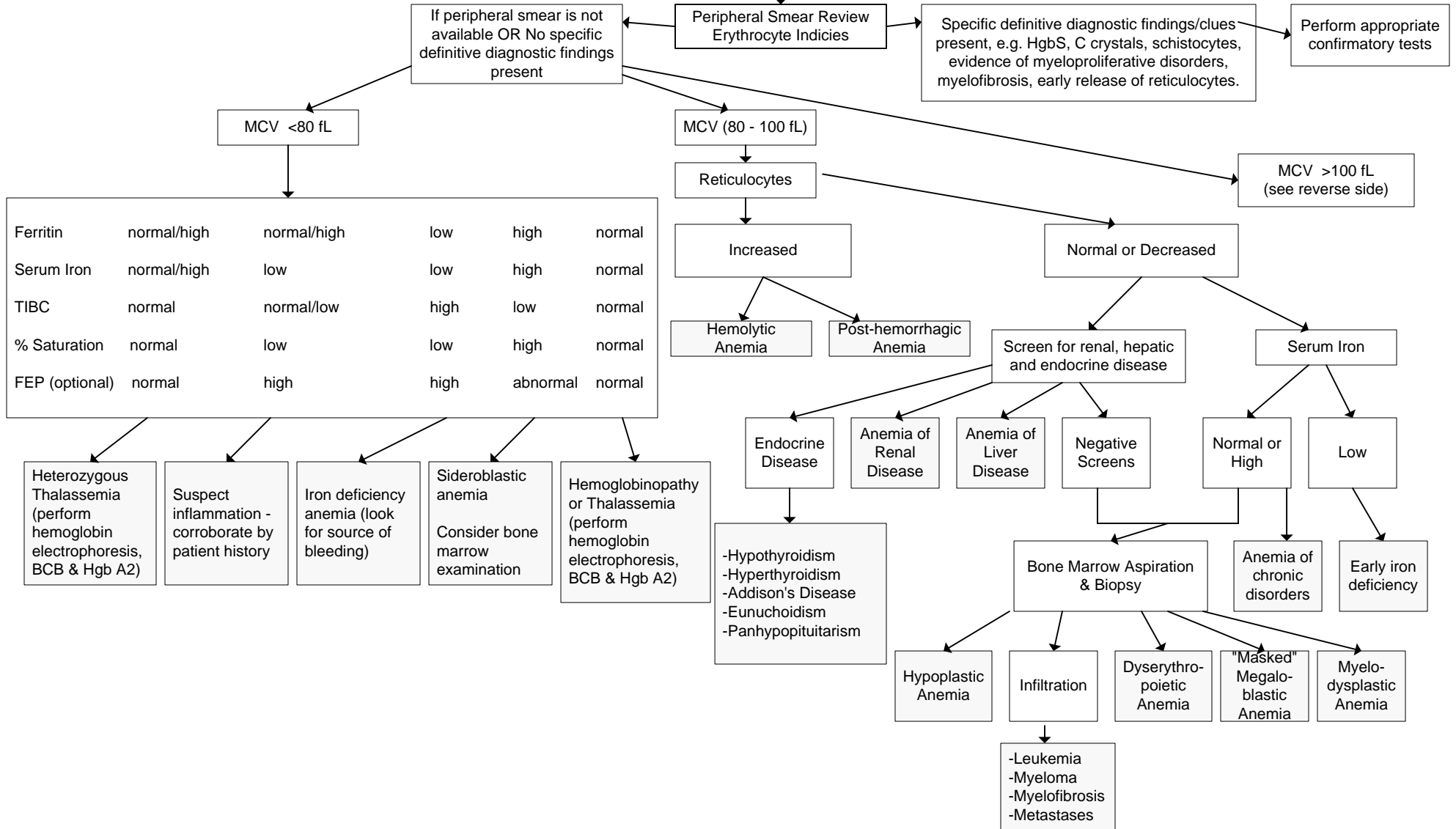
Laboratory Evaluation of Anemia in Adults

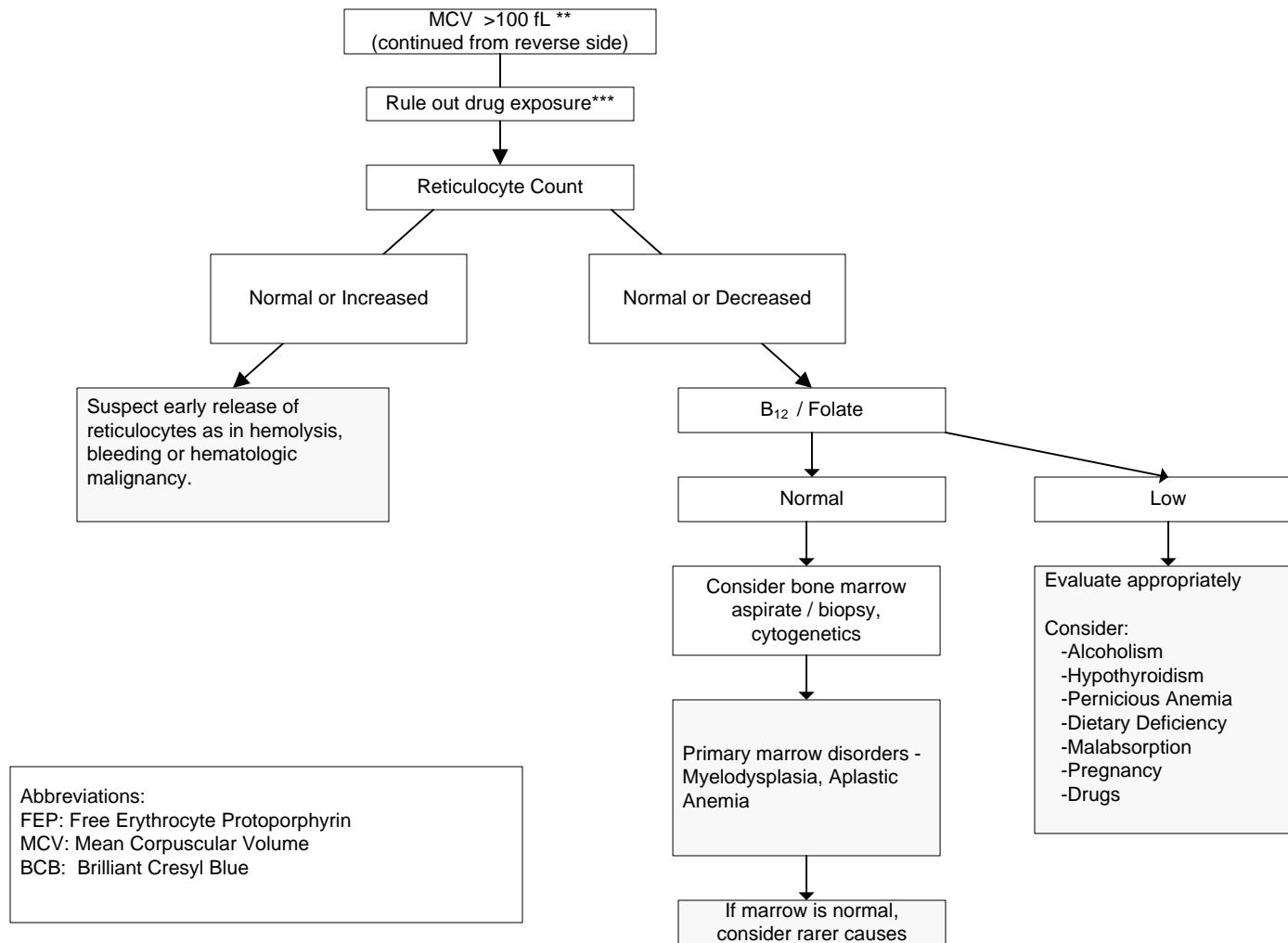
Washington State Clinical Laboratory Advisory Council

The individual clinician is in the best position to determine which tests are most appropriate for a particular patient.

Establish that anemia is present after correlation with history and physical exam:

	<u>Hemoglobin</u>	<u>Hematocrit</u>
Female:	<12 gm/dl	<35 L/L
Male:	<13 gm/dl	<40 L/L





Abbreviations:
 FEP: Free Erythrocyte Protoporphyrin
 MCV: Mean Corpuscular Volume
 BCB: Brilliant Cresyl Blue

**Artificial macrocytosis, determined by automated counters, may be caused by cold agglutinins, hyperglycemia, marked leukocytosis, RBC clumping, intracellular hypersensitivity.

***Some drugs that may cause macrocytosis: alcohol, chemotherapy drugs, zidovudine, anti-convulsants, oral contraceptives, triamterene, sulfasalazine, sulfamethoxazole, trimethoprim, colchicine, PASA, neomycin, nitrous oxide

References:
 1. Beuerlein, Frank. Testing Strategies for Anemias. Laboratory Management. December 1988.
 2. Lee, G. Richard, Bithell, Thomas C., Foerster, John, Athens, John, Lukens, John. Wintrobe's Clinical Hematology, Edition 10, 1999.

Originally published: October 1999
 Reviewed/Revised: Oct 2001/Oct 2004/Oct 2006/March 2009