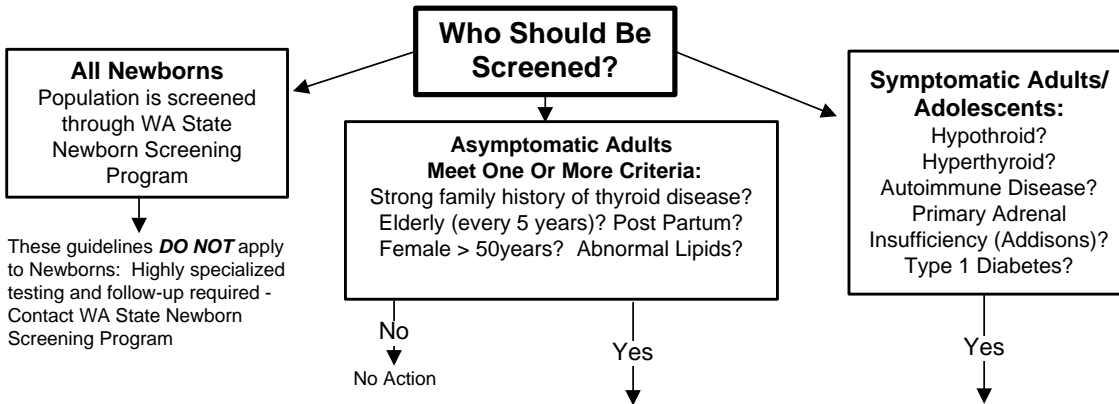


THYROID SCREENING GUIDELINES

Washington State Clinical Laboratory Advisory Council to the Washington State Department of Health
Originally published: March 1996
Reviewed/Revised: October 2000/January 2003/May 2007



These guidelines **DO NOT** apply to Newborns: Highly specialized testing and follow-up required - Contact WA State Newborn Screening Program

FOR EDUCATIONAL PURPOSES ONLY
The individual clinician is in the best position to determine which tests are most appropriate for a particular patient.

NOTE: If the following disease state(s) exist, it is recommended that the disease itself be treated and the patient returned to a stable ambulatory state before initiating screening:
Neuropsychiatric Disorder
Pituitary Disease (Ablation, Surgery, Tumor)
Terminal Patients
High Dose Steroids & Dopamine

References:

1. Klee GG, Hay ID. BioChemical Thyroid Function Testing. Mayo Clinic Interpretive Handbook 2001.
2. Feldkamp, C.S. Thyroid Testing Algorithms. Clinical Laboratory News, 10/97.
3. Klee GG, Hay ID. BioChemical Testing of Thyroid Function. Endocrinol Metab Clin North AM 26;763-775, 1997.
- *4. American Thyroid Assn & National Academy of Biochemist Practice Guidelines <http://www.aacc.org.aacc/members/nacb/LMPG/OnlineGuide/PublishedGuidelines/ThyroidDisease/>
- *5. Fatourechi, V., et. al. Effects of Reducing the Upper Limit of Normal TSH Values, JAMA vol 290, no. 24, 2003.

*Reference #4 & 5 discuss the debate over lowering the TSH upper limit from 5.0 to 3.0 mIU/L (uIU/mL) to diagnose subclinical hypothyroidism.

