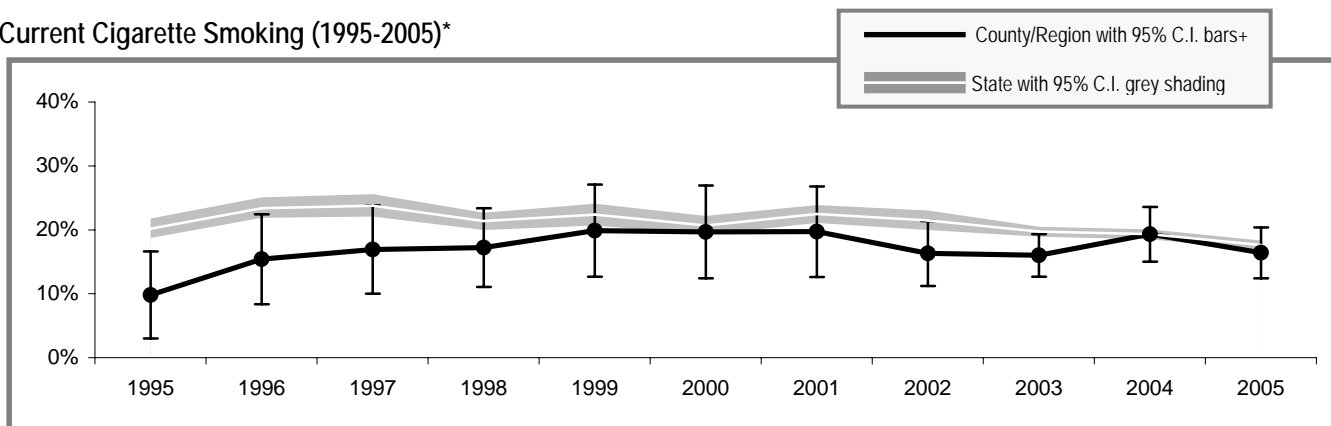


Asotin County

Asotin County

Adult Tobacco Use

Current Cigarette Smoking (1995-2005)*



* Smoking prevalence trend is based on English language surveys only. (Spanish language surveys began in 2003.)

+ Region includes Asotin, Columbia, Garfield, and Whitman counties. Prevalence is a 3-year rolling average through 2002; starting in 2003 smoking prevalence is based on single-year data.

Current Smoking (2005)**

	All adults
Asotin County	22.4% (± 6.9%)
Washington State	17.5% (± 0.7%)

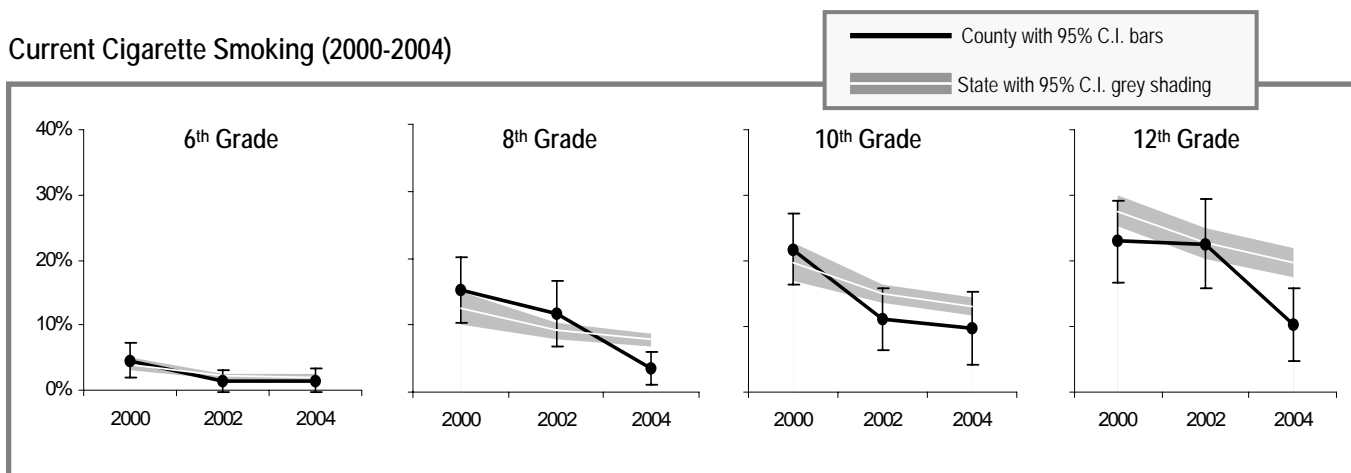
Current Smokeless Tobacco Use (2003-2005)**

	All adults	Males only
Asotin County	4.6% (± 2.6%)	9.7% (± 5.3%)
Washington State	3.0% (± 0.3%)	5.8% (± 0.6%)

** Current smoking and smokeless prevalence include both English and Spanish language surveys.

Youth Tobacco Use

Current Cigarette Smoking (2000-2004)



Current Smoking (2004)

	All 10 th Graders
Asotin County	17.1% (± 5.3%)
Region**	14.8% (± 1.6%)
Washington State	13.0% (± 1.4%)

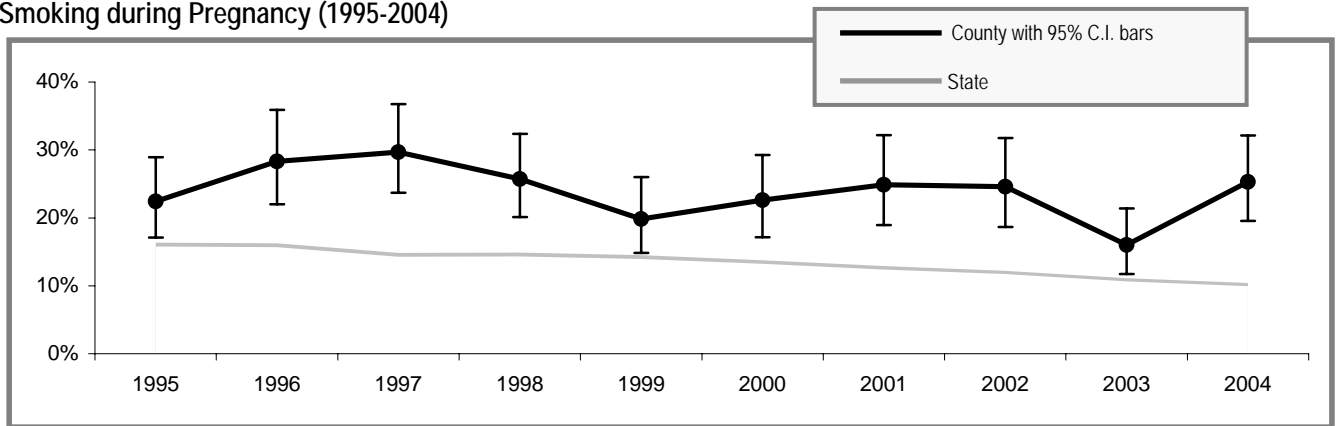
Current Smokeless Tobacco Use (2004)

	All 10 th Graders	10 th Grade Males only
Asotin County	12.5% (± 4.7%)	18.5% (± 7.8%)
Region**	4.0% (± 0.4%)	10.9% (± 2.0%)
Washington State	4.9% (± 0.6%)	8.0% (± 1.2%)

** Region includes school districts in Adams (Othello), Asotin, Benton, Columbia, Franklin, Garfield and Walla Walla counties.

Tobacco Use by Pregnant Women

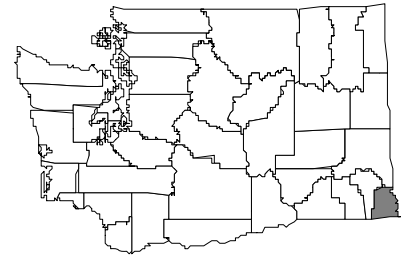
Smoking during Pregnancy (1995-2004)



People Affected in Asotin County

2000 population: 20,551

- 3,400 adults smoke
- 700 adults use smokeless tobacco
- 60 infants are born annually to mothers who smoke during pregnancy
- 200 youth smoke
- 100 youth use smokeless tobacco
- 3,700 adults are exposed to secondhand smoke
- 800 youth are exposed to secondhand smoke
- 20 cancers diagnosed each year are smoking-related
- 40 adults die annually from smoking-related causes



Community Indicators for Asotin County

- All restaurants and bars are now completely smokefree
- 80% of households have a ban on smoking (95% C.I. \pm 4%)
- 25% of retailers sold tobacco products to minors
- 39% of 10th graders say tobacco is "hard to get" (95% C.I. \pm 9%)
- 1 tobacco industry sampling event occurred in the past year – 8 samples were distributed
- 106 people called the Quitline in the past year
- 54% of smokers tried to quit in the past year (95% C.I. \pm 9%)
- 68% of tobacco users who had a healthcare visit in the past year were advised to quit by a healthcare professional (95% C.I. \pm 12%)
- 37% of tobacco users did not have a healthcare visit in the past year (95% C.I. \pm 15%)
- 17% of smokers who have health insurance say that their insurance covers help in quitting smoking, such as counseling or nicotine patches (95% C.I. \pm 8%)
- 35% of smokers with health insurance do not know if it covers help in quitting smoking (95% C.I. \pm 10%)

Priorities for Tobacco Prevention and Control

- Preventing Youth from Initiating Tobacco Use
- Increasing Tobacco Cessation
- Eliminating Exposure to Secondhand Smoke
- Identifying and Eliminating Tobacco-Related Disparities in High Risk Groups

Local Contact Information:

Donna Schaff
phone: 509-758-3344
fax: 509-758-8454
email: dschaff@co.asotin.wa.us

Asotin County Health District
Clarkston, WA 99403-2694
website: www.co.asotin.wa.us