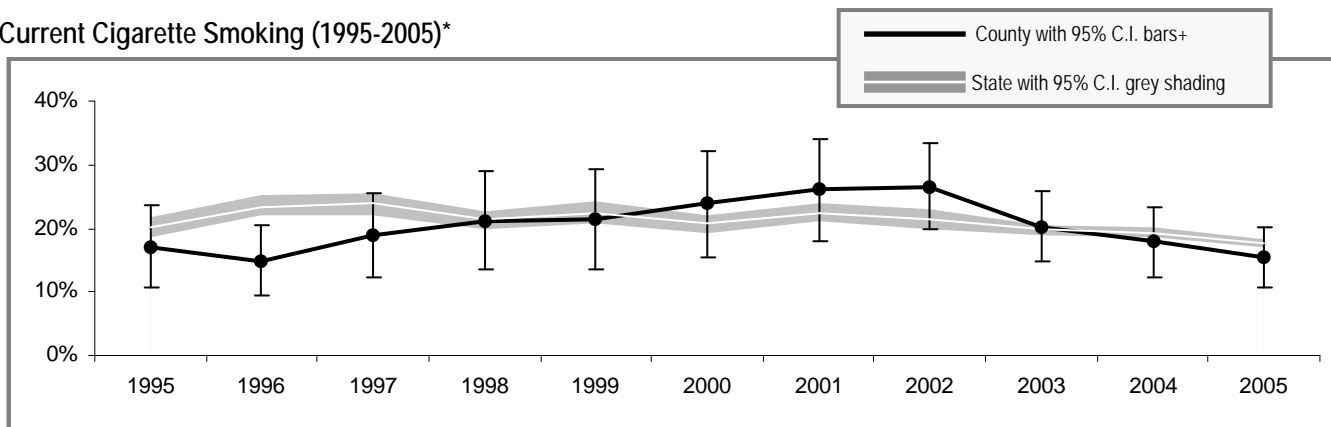


Clallam County

Clallam County

Adult Tobacco Use

Current Cigarette Smoking (1995-2005)*



* Smoking prevalence trend is based on English language surveys only. (Spanish language surveys began in 2003.)
 + County prevalence is a 3-year rolling average through 2002; starting in 2003 smoking prevalence is based on single-year data.

Current Smoking (2005)**

	All adults
Clallam County	15.3% (± 4.7%)
Washington State	17.5% (± 0.7%)

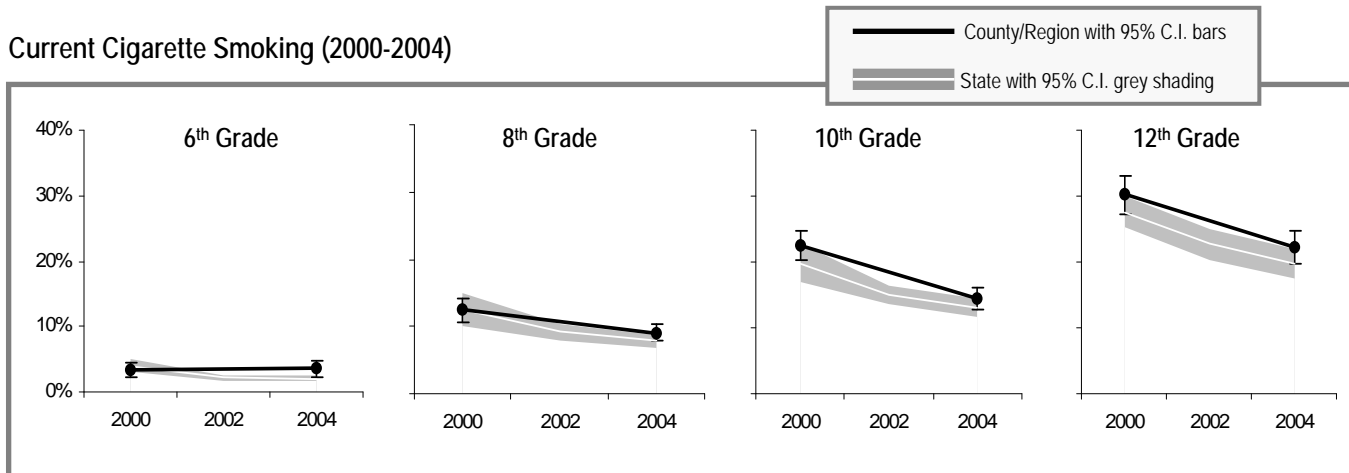
Current Smokeless Tobacco Use (2003-2005)**

	All adults	Males only
Clallam County	4.1% (± 2.3%)	8.6% (± 4.6%)
Washington State	3.0% (± 0.3%)	5.8% (± 0.6%)

** Current smoking and smokeless prevalence include both English and Spanish language surveys.

Youth Tobacco Use

Current Cigarette Smoking (2000-2004)



Note: Regional prevalence is shown in this graph because county information was unavailable for two or more grades or years.

Current Smoking (2004)

	All 10 th Graders
Clallam County	NA
Region**	14.5% (± 1.6%)
Washington State	13.0% (± 1.4%)

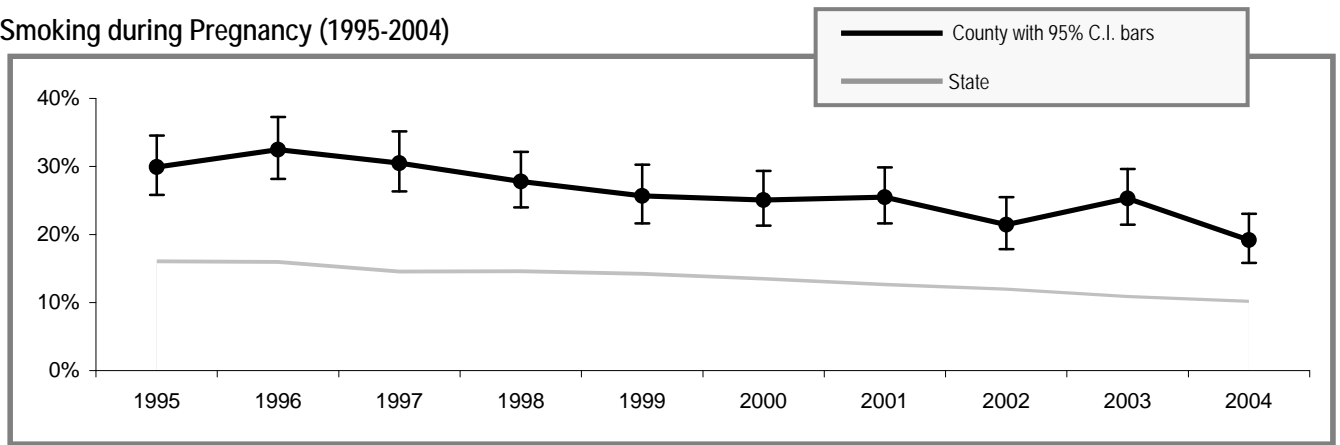
Current Smokeless Tobacco Use (2004)

	All 10 th Graders	10 th Grade Males only
Clallam County	NA	NA
Region**	4.0% (± 0.6%)	7.2% (± 1.8%)
Washington State	4.9% (± 0.6%)	8.0% (± 1.2%)

** Region includes school districts in Clallam, Jefferson, Kitsap, and Mason (North Mason) counties.

Tobacco Use by Pregnant Women

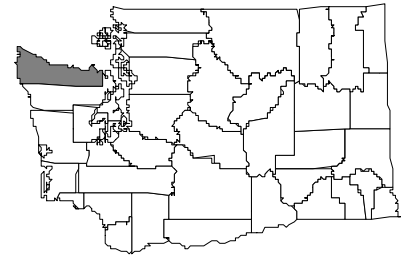
Smoking during Pregnancy (1995-2004)



People Affected in Clallam County

2000 population: 64,525

- 7,700 adults smoke
- 2,100 adults use smokeless tobacco
- 140 infants are born annually to mothers who smoke during pregnancy
- 700 youth smoke
- 200 youth use smokeless tobacco
- 8,000 adults are exposed to secondhand smoke
- 1,100 youth are exposed to secondhand smoke
- 100 cancers diagnosed each year are smoking-related
- 100 adults die annually from smoking-related causes



Community Indicators for Clallam County

- All restaurants and bars are now completely smokefree
- 84% of households have a ban on smoking (95% C.I. \pm 3%)
- 14% of retailers sold tobacco products to minors
- 48% of 10th graders say tobacco is "hard to get" (95% C.I. \pm 3%)
- 16 tobacco industry sampling event occurred in the past year – 24 samples were distributed
- 355 people called the Quitline in the past year
- 58% of smokers tried to quit in the past year (95% C.I. \pm 9%)
- 64% of tobacco users who had a healthcare visit in the past year were advised to quit by a healthcare professional (95% C.I. \pm 9%)
- 20% of tobacco users did not have a healthcare visit in the past year (95% C.I. \pm 7%)
- 21% of smokers who have health insurance say that their insurance covers help in quitting smoking, such as counseling or nicotine patches (95% C.I. \pm 11%)
- 48% of smokers with health insurance do not know if it covers help in quitting smoking (95% C.I. \pm 13%)

Priorities for Tobacco Prevention and Control

- Preventing Youth from Initiating Tobacco Use
- Increasing Tobacco Cessation
- Eliminating Exposure to Secondhand Smoke
- Identifying and Eliminating Tobacco-Related Disparities in High Risk Groups

Local Contact Information:

Jill Dole
phone: 360-565-2608
fax: 360-417-2583
email: jdole@co.clallam.wa.us

Clallam County Health & Human Services
223 E 4th Street, Suite 14
Port Angeles, WA 98362
website: <http://www.clallam.net/HealthServices>