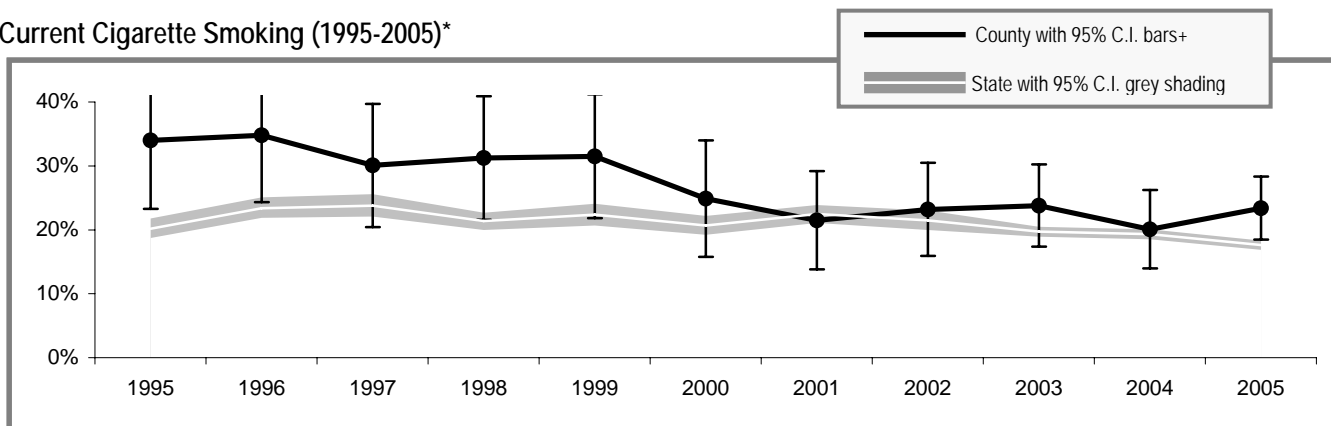


Douglas County

Douglas County

Adult Tobacco Use

Current Cigarette Smoking (1995-2005)\*



\* Smoking prevalence trend is based on English language surveys only. (Spanish language surveys began in 2003.)  
 + County prevalence is a 5-year rolling average through 2002; starting in 2003 smoking prevalence is based on single-year data.

Current Smoking (2005)\*\*

	All adults
Douglas County	20.4% (± 4.5%)
Washington State	17.5% (± 0.7%)

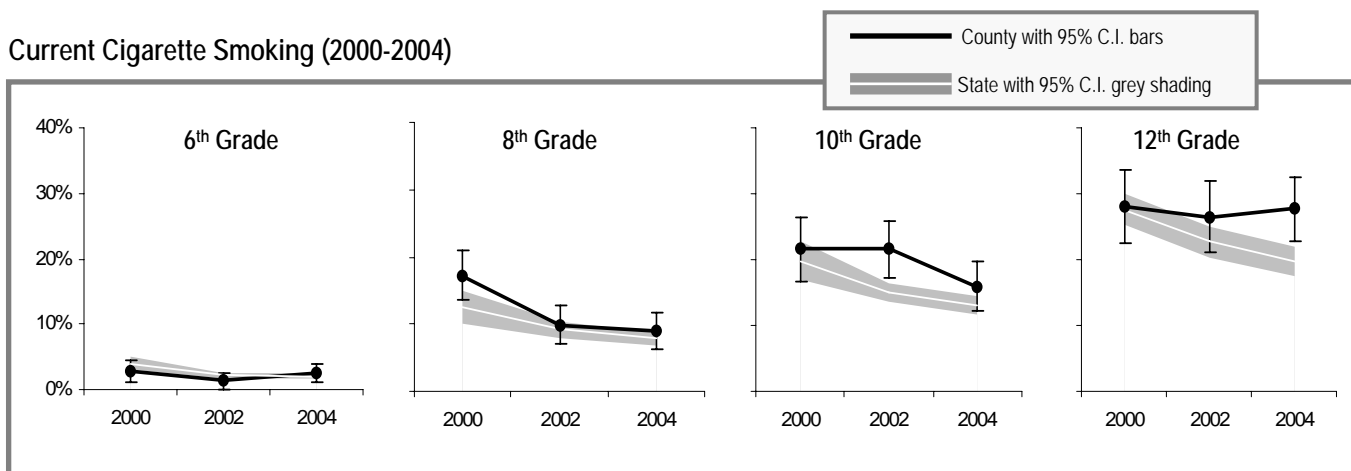
Current Smokeless Tobacco Use (2003-2005)\*\*

	All adults	Males only
Douglas County	2.8% (± 1.6%)	5.6% (± 3.3%)
Washington State	3.0% (± 0.3%)	5.8% (± 0.6%)

\*\* Current smoking and smokeless prevalence include both English and Spanish language surveys.

Youth Tobacco Use

Current Cigarette Smoking (2000-2004)



Current Smoking (2004)

	All 10 <sup>th</sup> Graders
Douglas County	15.9% (± 3.7%)
Region**	13.5% (± 1.6%)
Washington State	13.0% (± 1.4%)

Current Smokeless Tobacco Use (2004)

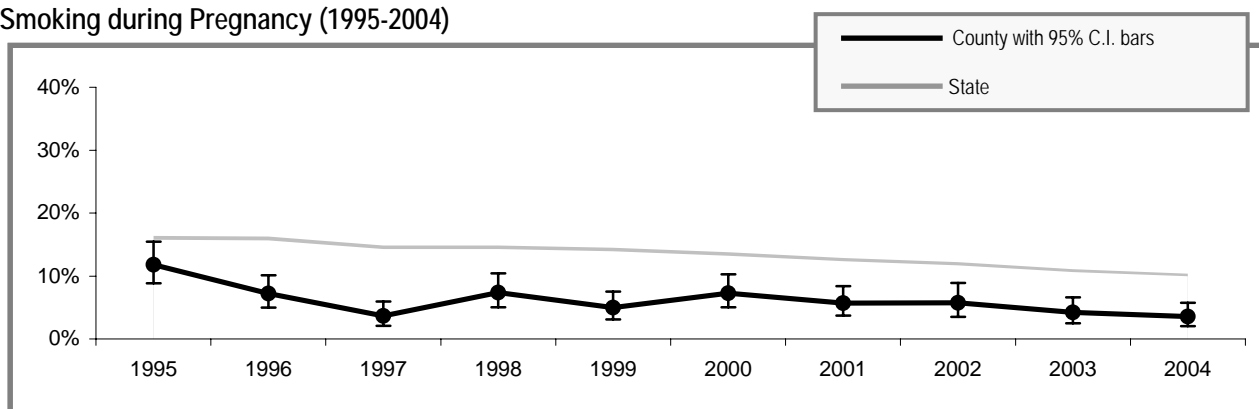
	All 10 <sup>th</sup> Graders	10 <sup>th</sup> Grade Males only
Douglas County	5.6% (± 2.4%)	10.6% (± 4.5%)
Region**	4.8% (± 0.4%)	10.8% (± 2.0%)
Washington State	4.9% (± 0.6%)	8.0% (± 1.2%)

\*\* Region includes school districts in Chelan, Douglas, Grant and Okanogan counties.

DATA SOURCES: ADULT TOBACCO USE – WA. DEPT OF HEALTH, BEHAVIORAL RISK FACTOR SURVEILLANCE SYSTEM (BRFSS); YOUTH TOBACCO USE – WA STATE HEALTHY YOUTH SURVEY (HYS); POPULATION ESTIMATES – OFFICE OF FINANCIAL MGMT(OFM), YEAR 2000 CENSUS; MATERNAL SMOKING DURING PREGNANCY – WA BIRTH CERT SYSTEM; TOBACCO-RELATED CANCER – WA STATE CANCER REGISTRY; ESTIMATED TOTAL DEATHS – WA DEATH CERT SYSTEM.

# Tobacco Use by Pregnant Women

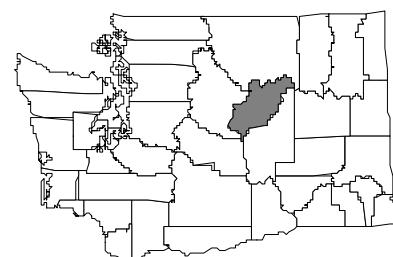
## Smoking during Pregnancy (1995-2004)



## People Affected in Douglas County

2000 population: 32,603

- 4,700 adults smoke
- 600 adults use smokeless tobacco
- 20 infants are born annually to mothers who smoke during pregnancy
- 500 youth smoke
- 200 youth use smokeless tobacco
- 4,300 adults are exposed to secondhand smoke
- 700 youth are exposed to secondhand smoke
- 30 cancers diagnosed each year are smoking-related
- 50 adults die annually from smoking-related causes



## Community Indicators for Douglas County

- All restaurants and bars are now completely smokefree
- 82% of households have a ban on smoking (95% C.I.  $\pm$  4%)
- 0% of retailers sold tobacco products to minors
- 36% of 10<sup>th</sup> graders say tobacco is "hard to get" (95% C.I.  $\pm$  7%)
- 0 tobacco industry sampling event occurred in the past year – 0 samples were distributed
- 93 people called the Quitline in the past year
- 62% of smokers tried to quit in the past year (95% C.I.  $\pm$  8%)
- 58% of tobacco users who had a healthcare visit in the past year were advised to quit by a healthcare professional (95% C.I.  $\pm$  10%)
- 30% of tobacco users did not have a healthcare visit in the past year (95% C.I.  $\pm$  9%)
- 15% of smokers who have health insurance say that their insurance covers help in quitting smoking, such as counseling or nicotine patches (95% C.I.  $\pm$  7%)
- 41% of smokers with health insurance do not know if it covers help in quitting smoking (95% C.I.  $\pm$  12%)

## Priorities for Tobacco Prevention and Control

- Preventing Youth from Initiating Tobacco Use
- Increasing Tobacco Cessation
- Eliminating Exposure to Secondhand Smoke
- Identifying and Eliminating Tobacco-Related Disparities in High Risk Groups

### Local Contact Information:

Darcee Anderson  
Chelan-Douglas Health District  
200 Valley Mall Parkway, Wenatchee, WA 98807  
phone: 509-886-6424  
fax: 509-886-6449  
email: darcee.anderson@cdhd.wa.gov

Marilyn Dold  
Chelan-Douglas TOGETHER, ESD 171  
PO Box 3525 (23 S. Wenatchee Ave #20)  
phone: 509-662-7201  
fax: 509-662-7201  
email: togethermd@nwi.net