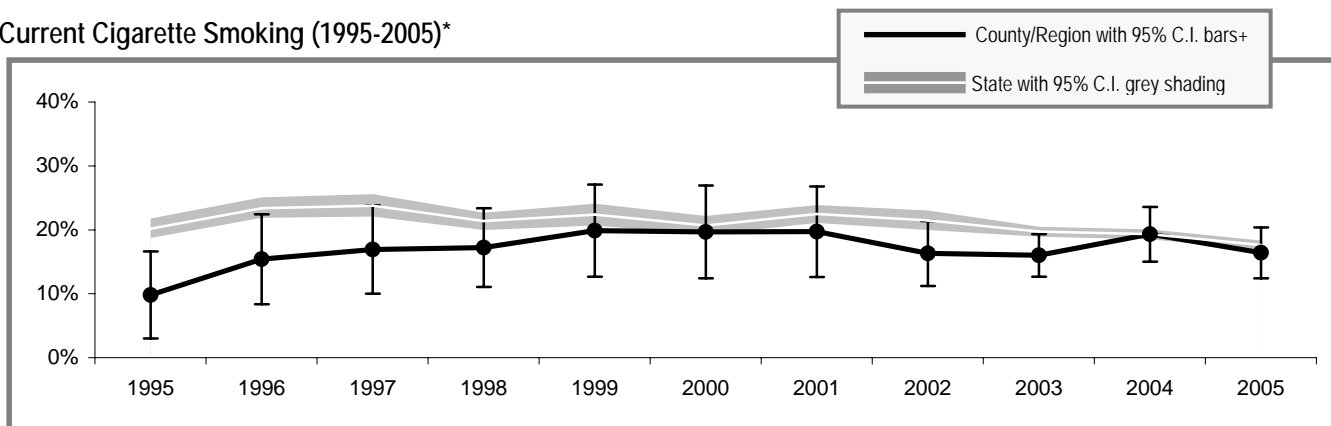


Garfield County

Garfield County

Adult Tobacco Use

Current Cigarette Smoking (1995-2005)\*



\* Smoking prevalence trend is based on English language surveys only. (Spanish language surveys began in 2003.)

+ Region includes Asotin, Columbia, Garfield, and Whitman counties. Prevalence is a 3-year rolling average through 2002; starting in 2003 smoking prevalence is based on single-year data.

Current Smoking (2005)\*\*

	All adults
Garfield County	15.6% (± 6.0%)
Washington State	17.5% (± 0.7%)

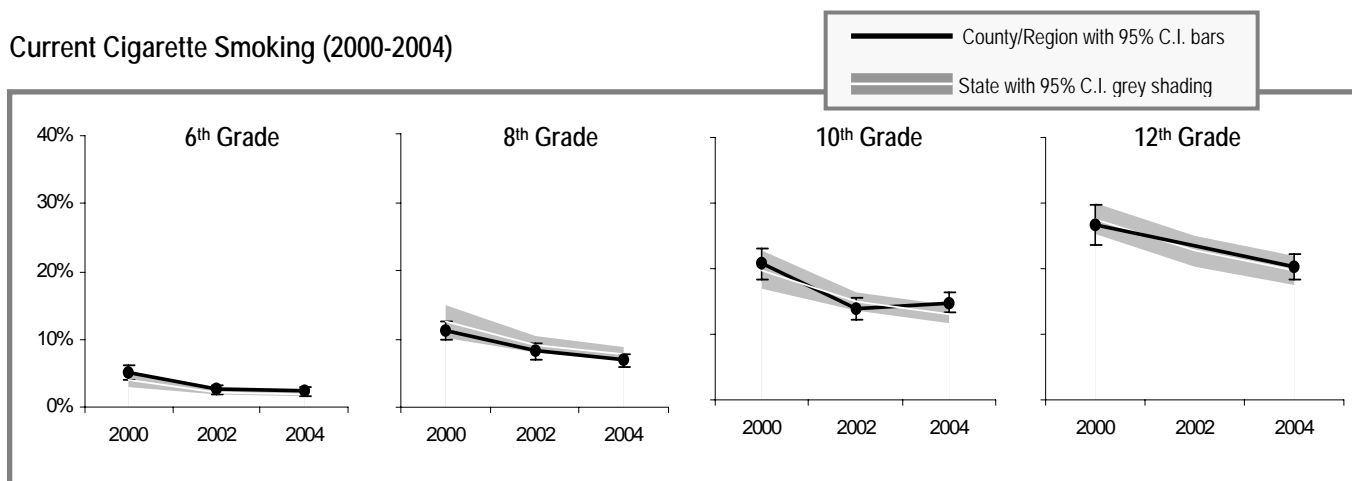
Current Smokeless Tobacco Use (2003-2005)\*\*

	All adults	Males only
Garfield County	5.3% (± 2.3%)	11.8% (± 5.2%)
Washington State	3.0% (± 0.3%)	5.8% (± 0.6%)

\*\* Current smoking and smokeless prevalence include both English and Spanish language surveys.

Youth Tobacco Use

Current Cigarette Smoking (2000-2004)



Note: Regional prevalence is shown in this graph because county information was unavailable for two or more grades or years.

Current Smoking (2004)

	All 10 <sup>th</sup> Graders
Garfield County	NA
Region**	14.8% (± 1.6%)
Washington State	13.0% (± 1.4%)

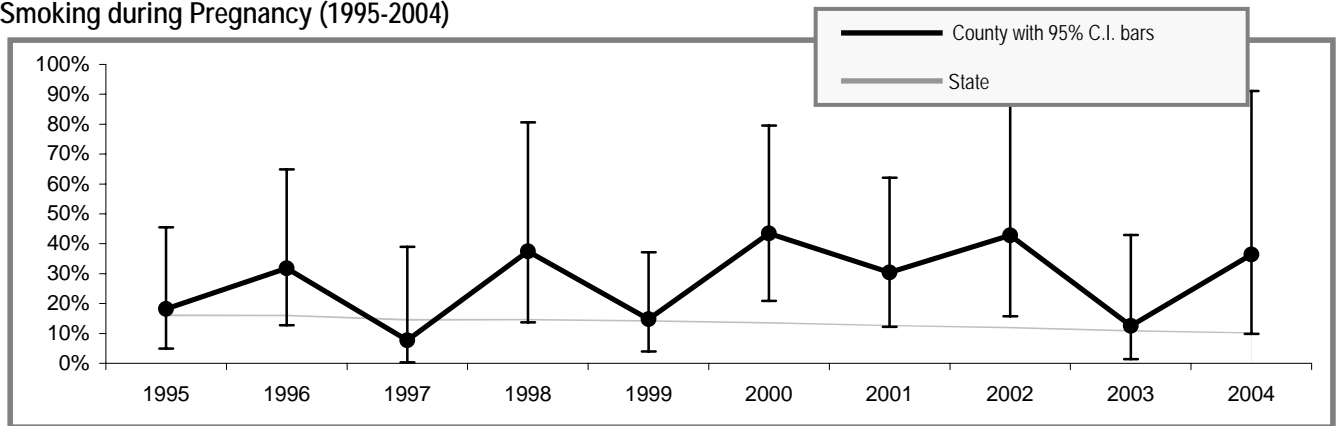
Current Smokeless Tobacco Use (2004)

	All 10 <sup>th</sup> Graders	10 <sup>th</sup> Grade Males only
Garfield County	NA	NA
Region**	4.0% (± 0.4%)	10.9% (± 2.0%)
Washington State	4.9% (± 0.6%)	8.0% (± 1.2%)

\*\* Region includes school districts in Adams (Othello), Asotin, Benton, Columbia, Franklin, Garfield and Walla Walla counties.

## Tobacco Use by Pregnant Women

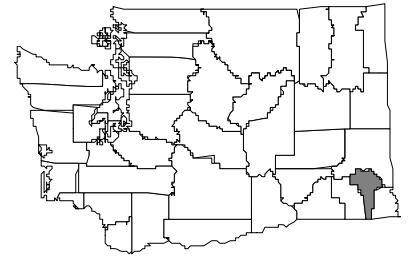
### Smoking during Pregnancy (1995-2004)



### People Affected in Garfield County

2000 population: 2,397

- 300 adults smoke
- 90 adults use smokeless tobacco
- 5 infants are born annually to mothers who smoke during pregnancy
- 30 youth smoke
- 10 youth use smokeless tobacco
- 400 adults are exposed to secondhand smoke
- 100 youth are exposed to secondhand smoke
- 3 cancers diagnosed each year are smoking-related
- 0 adults die annually from smoking-related causes



### Community Indicators for Garfield County

- All restaurants and bars are now completely smokefree
- 79% of households have a ban on smoking (95% C.I.  $\pm$  4%)
- 0% of retailers sold tobacco products to minors
- 44% of 10<sup>th</sup> graders say tobacco is "hard to get" (95% C.I.  $\pm$  3%)
- 0 tobacco industry sampling event occurred in the past year – 0 samples were distributed
- 10 people called the Quitline in the past year
- 45% of smokers tried to quit in the past year (95% C.I.  $\pm$  10%)
- 68% of tobacco users who had a healthcare visit in the past year were advised to quit by a healthcare professional (95% C.I.  $\pm$  12%)
- 37% of tobacco users did not have a healthcare visit in the past year (95% C.I.  $\pm$  15%)
- 15% of smokers who have health insurance say that their insurance covers help in quitting smoking, such as counseling or nicotine patches (95% C.I.  $\pm$  8%)
- 46% of smokers with health insurance do not know if it covers help in quitting smoking (95% C.I.  $\pm$  12%)

### Priorities for Tobacco Prevention and Control

- Preventing Youth from Initiating Tobacco Use
- Increasing Tobacco Cessation
- Eliminating Exposure to Secondhand Smoke
- Identifying and Eliminating Tobacco-Related Disparities in High Risk Groups

#### Local Contact Information:

Tina Warren  
phone: 509-843-3412  
fax: 509-843-1935  
email: twarren@co.garfield.wa.us

Garfield County Health District  
PO Box 130  
Pomeroy, WA 99347  
website: