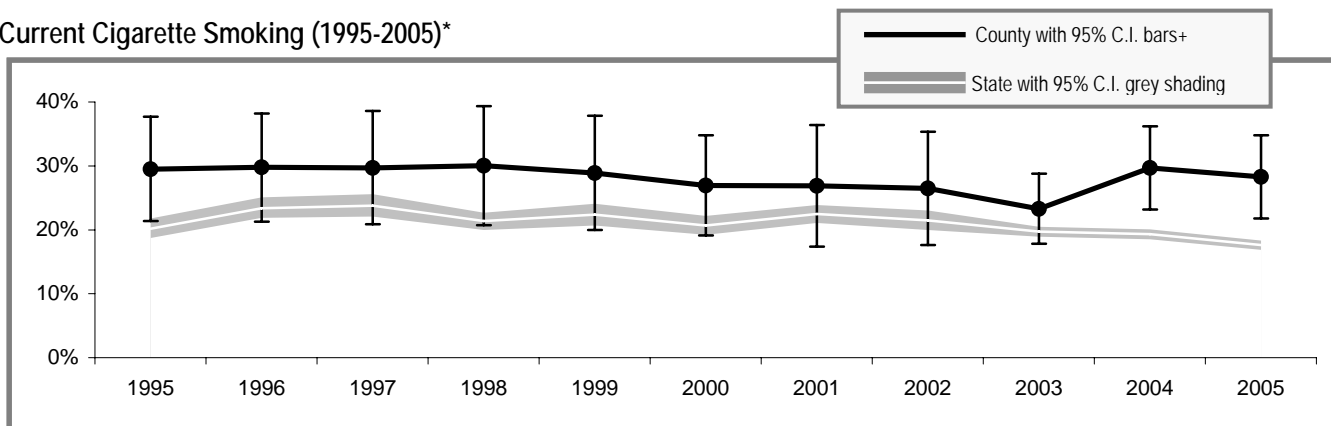


Grays Harbor County

Adult Tobacco Use

Current Cigarette Smoking (1995-2005)*



* Smoking prevalence trend is based on English language surveys only. (Spanish language surveys began in 2003.)
 + County prevalence is a 3-year rolling average through 2002; starting in 2003 smoking prevalence is based on single-year data.

Current Smoking (2005)**

	All adults
Grays Harbor County	29.0% (± 6.6%)
Washington State	17.5% (± 0.7%)

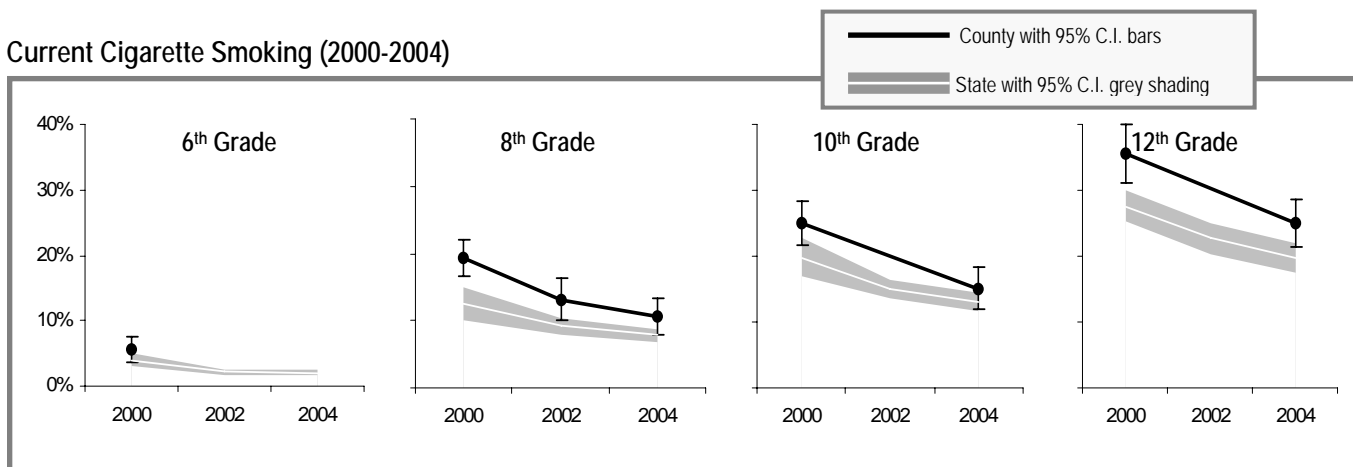
Current Smokeless Tobacco Use (2003-2005)**

	All adults	Males only
Grays Harbor County	4.6% (± 2.1%)	9.4% (± 4.4%)
Washington State	3.0% (± 0.3%)	5.8% (± 0.6%)

** Current smoking and smokeless prevalence include both English and Spanish language surveys.

Youth Tobacco Use

Current Cigarette Smoking (2000-2004)



Current Smoking (2004)

	All 10 th Graders
Grays Harbor County	15.1% (± 3.1%)
Region**	15.8% (± 1.2%)
Washington State	13.0% (± 1.4%)

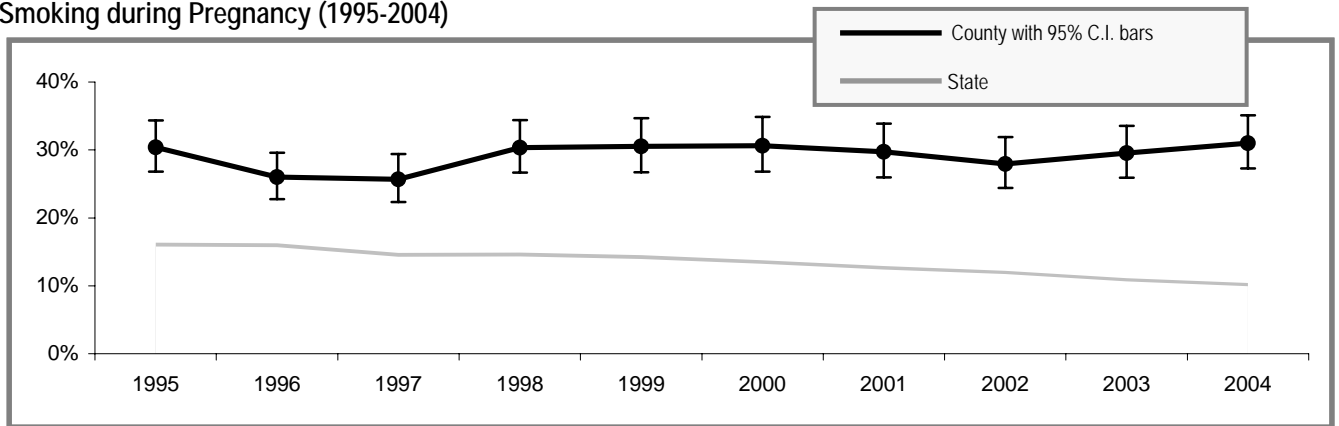
Current Smokeless Tobacco Use (2004)

	All 10 th Graders	10 th Grade Males only
Grays Harbor County	7.8% (± 2.4%)	12.1% (± 3.9%)
Region**	5.1% (± 0.4%)	9.8% (± 1.4%)
Washington State	4.9% (± 0.6%)	8.0% (± 1.2%)

** Region includes school districts in Grays Harbor, Lewis, Mason, Pacific, and Thurston counties.

Tobacco Use by Pregnant Women

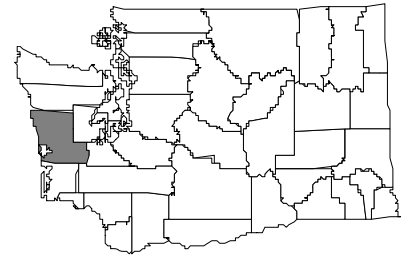
Smoking during Pregnancy (1995-2004)



People Affected in Grays Harbor County

2000 population: 67,194

- 14,500 adults smoke
- 2,300 adults use smokeless tobacco
- 230 infants are born annually to mothers who smoke during pregnancy
- 900 youth smoke
- 400 youth use smokeless tobacco
- 13,300 adults are exposed to secondhand smoke
- 3,900 youth are exposed to secondhand smoke
- 100 cancers diagnosed each year are smoking-related
- 100 adults die annually from smoking-related causes



Community Indicators for Grays Harbor County

- All restaurants and bars are now completely smokefree
- 72% of households have a ban on smoking (95% C.I. \pm 4%)
- 8% of retailers sold tobacco products to minors
- 49% of 10th graders say tobacco is "hard to get" (95% C.I. \pm 6%)
- 1 tobacco industry sampling event occurred in the past year – 37 samples were distributed
- 336 people called the Quitline in the past year
- 55% of smokers tried to quit in the past year (95% C.I. \pm 8%)
- 64% of tobacco users who had a healthcare visit in the past year were advised to quit by a healthcare professional (95% C.I. \pm 8%)
- 24% of tobacco users did not have a healthcare visit in the past year (95% C.I. \pm 6%)
- 16% of smokers who have health insurance say that their insurance covers help in quitting smoking, such as counseling or nicotine patches (95% C.I. \pm 7%)
- 40% of smokers with health insurance do not know if it covers help in quitting smoking (95% C.I. \pm 10%)

Priorities for Tobacco Prevention and Control

- Preventing Youth from Initiating Tobacco Use
- Increasing Tobacco Cessation
- Eliminating Exposure to Secondhand Smoke
- Identifying and Eliminating Tobacco-Related Disparities in High Risk Groups

Local Contact Information:

Dan Holmchick
phone: 360-532-8665 x481
fax: 360-533-1983
email: dhomchick@co.grays-harbor.wa.us

Grays Harbor Health Department
2109 Sumner Avenue
Aberdeen, WA 98520
website: