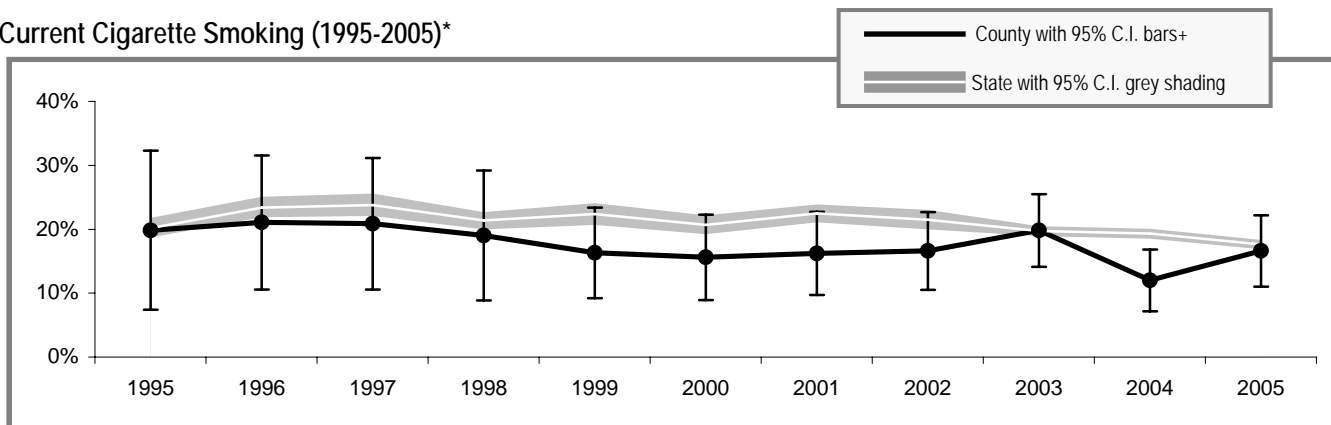


Kittitas County

Kittitas County

Adult Tobacco Use

Current Cigarette Smoking (1995-2005)*



* Smoking prevalence trend is based on English language surveys only. (Spanish language surveys began in 2003.)
 + County prevalence is a 5-year rolling average through 2002; starting in 2003 smoking prevalence is based on single-year data.

Current Smoking (2005)**

	<i>All adults</i>
Kittitas County	15.8% (± 5.4%)
Washington State	17.5% (± 0.7%)

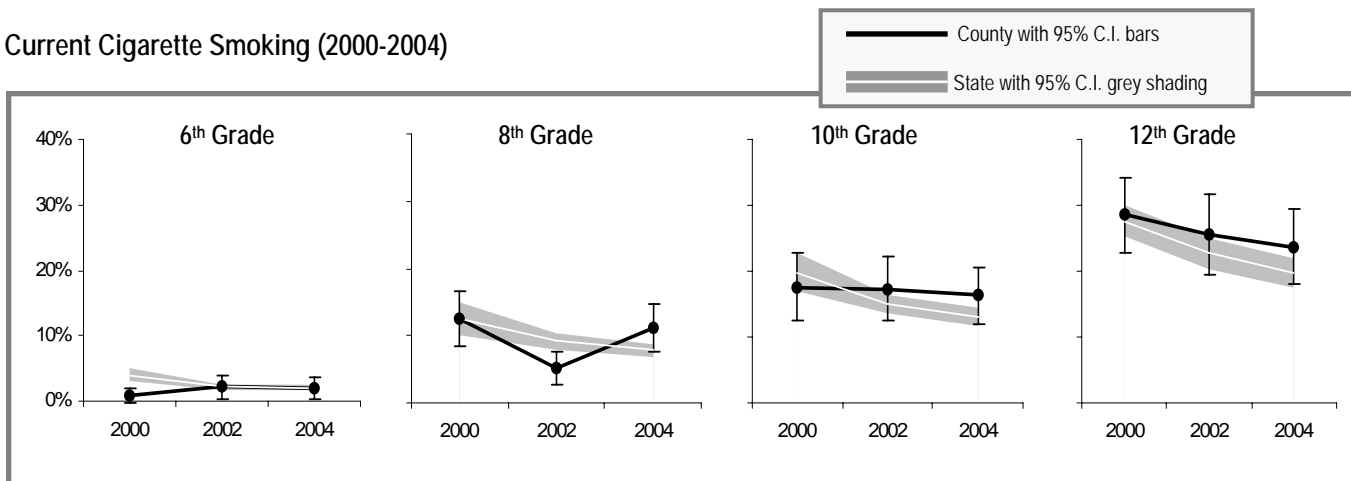
Current Smokeless Tobacco Use (2003-2005)**

	<i>All adults</i>	<i>Males only</i>
Kittitas County	6.9% (± 3.0%)	14.8% (± 6.2%)
Washington State	3.0% (± 0.3%)	5.8% (± 0.6%)

** Current smoking and smokeless prevalence include both English and Spanish language surveys.

Youth Tobacco Use

Current Cigarette Smoking (2000-2004)



Current Smoking (2004)

	<i>All 10th Graders</i>
Kittitas County	16.3% (± 4.3%)
Region**	12.2% (± 1.2%)
Washington State	13.0% (± 1.4%)

Current Smokeless Tobacco Use (2004)

	<i>All 10th Graders</i>	<i>10th Grade Males only</i>
Kittitas County	13.4% (± 3.9%)	23.2% (± 6.9%)
Region**	4.1% (± 0.4%)	9.0% (± 1.6%)
Washington State	4.9% (± 0.6%)	8.0% (± 1.2%)

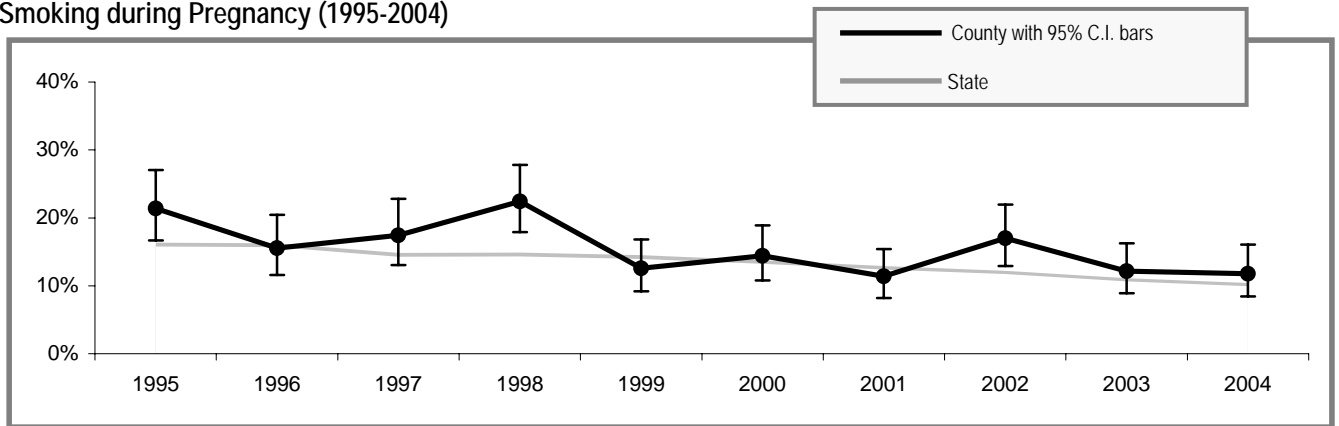
** Region includes school districts in Grant, Kittitas, Klickitat and Yakima counties.



DATA SOURCES: ADULT TOBACCO USE – WA. DEPT OF HEALTH, BEHAVIORAL RISK FACTOR SURVEILLANCE SYSTEM (BRFSS); YOUTH TOBACCO USE – WA STATE HEALTHY YOUTH SURVEY (HYS); POPULATION ESTIMATES – OFFICE OF FINANCIAL MGMT(OFM), YEAR 2000 CENSUS; MATERNAL SMOKING DURING PREGNANCY – WA BIRTH CERT SYSTEM; TOBACCO-RELATED CANCER – WA STATE CANCER REGISTRY; ESTIMATED TOTAL DEATHS – WA DEATH CERT SYSTEM.

Tobacco Use by Pregnant Women

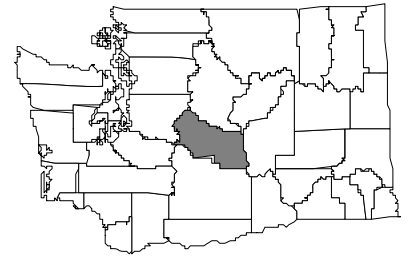
Smoking during Pregnancy (1995-2004)



People Affected in Kittitas County

2000 population: 33,362

- 4,200 adults smoke
- 1,800 adults use smokeless tobacco
- 50 infants are born annually to mothers who smoke during pregnancy
- 300 youth smoke
- 200 youth use smokeless tobacco
- 4,900 adults are exposed to secondhand smoke
- 600 youth are exposed to secondhand smoke
- 20 cancers diagnosed each year are smoking-related
- 50 adults die annually from smoking-related causes



Community Indicators for Kittitas County

- All restaurants and bars are now completely smokefree
- 84% of households have a ban on smoking (95% C.I. \pm 3%)
- 7% of retailers sold tobacco products to minors
- 47% of 10th graders say tobacco is "hard to get" (95% C.I. \pm 8%)
- 10 tobacco industry sampling event occurred in the past year – 1,748 samples were distributed
- 130 people called the Quitline in the past year
- 45% of smokers tried to quit in the past year (95% C.I. \pm 10%)
- 61% of tobacco users who had a healthcare visit in the past year were advised to quit by a healthcare professional (95% C.I. \pm 13%)
- 27% of tobacco users did not have a healthcare visit in the past year (95% C.I. \pm 9%)
- 20% of smokers who have health insurance say that their insurance covers help in quitting smoking, such as counseling or nicotine patches (95% C.I. \pm 9%)
- 42% of smokers with health insurance do not know if it covers help in quitting smoking (95% C.I. \pm 12%)

Priorities for Tobacco Prevention and Control

- Preventing Youth from Initiating Tobacco Use
- Increasing Tobacco Cessation
- Eliminating Exposure to Secondhand Smoke
- Identifying and Eliminating Tobacco-Related Disparities in High Risk Groups

Local Contact Information:

Megan Woltring
phone: 509-962-7680
fax: 509-962-7581
email: megan.woltring@co.kittitas.wa.us

Kittitas County Health Department
507 Nanum
Ellensburg, WA 98926
website: <http://co.kittitas.wa.us/health/tobacco/>