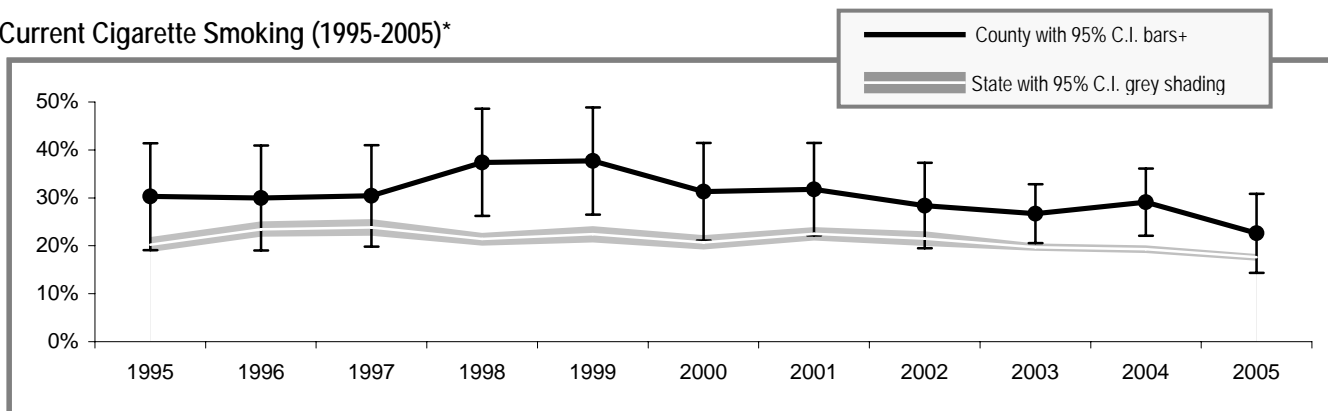


Pacific County

Pacific County

Adult Tobacco Use

Current Cigarette Smoking (1995-2005)\*



\* Smoking prevalence trend is based on English language surveys only. (Spanish language surveys began in 2003.)  
 + County prevalence is a 5-year rolling average through 2002; starting in 2003 smoking prevalence is based on single-year data.

Current Smoking (2005)\*\*

	All adults
Pacific County	22.7% (± 8.1%)
Washington State	17.5% (± 0.7%)

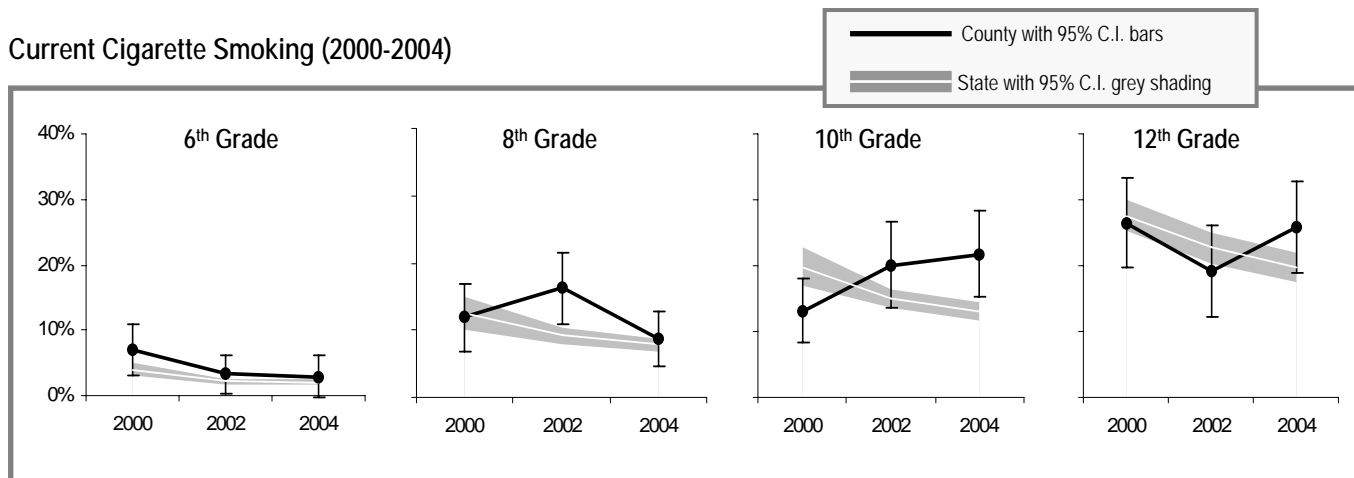
Current Smokeless Tobacco Use (2003-2005)\*\*

	All adults	Males only
Pacific County	7.3% (± 2.9%)	14.2% (± 5.5%)
Washington State	3.0% (± 0.3%)	5.8% (± 0.6%)

\*\* Current smoking and smokeless prevalence include both English and Spanish language surveys.

Youth Tobacco Use

Current Cigarette Smoking (2000-2004)



Current Smoking (2004)

	All 10 <sup>th</sup> Graders
Pacific County	21.7% (± 6.5%)
Region**	15.8% (± 1.2%)
Washington State	13.0% (± 1.4%)

Current Smokeless Tobacco Use (2004)

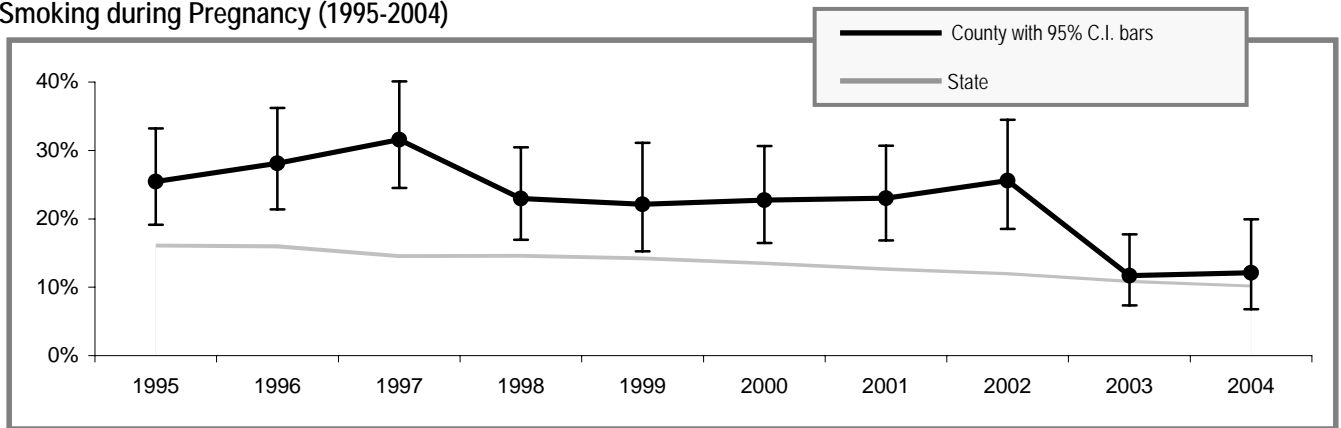
	All 10 <sup>th</sup> Graders	10 <sup>th</sup> Grade Males only
Pacific County	13.1% (± 5.3%)	21.4% (± 9.6%)
Region**	5.1% (± 0.4%)	9.8% (± 1.4%)
Washington State	4.9% (± 0.6%)	8.0% (± 1.2%)

\*\* Region includes school districts in Grays Harbor, Lewis, Mason, Pacific, and Thurston counties.

DATA SOURCES: ADULT TOBACCO USE – WA. DEPT OF HEALTH, BEHAVIORAL RISK FACTOR SURVEILLANCE SYSTEM (BRFSS); YOUTH TOBACCO USE – WA STATE HEALTHY YOUTH SURVEY (HYS); POPULATION ESTIMATES – OFFICE OF FINANCIAL MGMT(OFM), YEAR 2000 CENSUS; MATERNAL SMOKING DURING PREGNANCY – WA BIRTH CERT SYSTEM; TOBACCO-RELATED CANCER – WA STATE CANCER REGISTRY; ESTIMATED TOTAL DEATHS – WA DEATH CERT SYSTEM.

## Tobacco Use by Pregnant Women

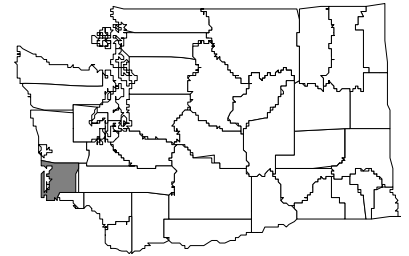
### Smoking during Pregnancy (1995-2004)



### People Affected in Pacific County

2000 population: 20,984

- 3,700 adults smoke
- 1,200 adults use smokeless tobacco
- 40 infants are born annually to mothers who smoke during pregnancy
- 300 youth smoke
- 200 youth use smokeless tobacco
- 4,700 adults are exposed to secondhand smoke
- 1,100 youth are exposed to secondhand smoke
- 30 cancers diagnosed each year are smoking-related
- 50 adults die annually from smoking-related causes



### Community Indicators for Pacific County

- All restaurants and bars are now completely smokefree
- 74% of households have a ban on smoking (95% C.I.  $\pm$  4%)
- 0% of retailers sold tobacco products to minors
- 38% of 10<sup>th</sup> graders say tobacco is "hard to get" (95% C.I.  $\pm$  11%)
- 2 tobacco industry sampling event occurred in the past year – 2 samples were distributed
- 69 people called the Quitline in the past year
- 46% of smokers tried to quit in the past year (95% C.I.  $\pm$  10%)
- 64% of tobacco users who had a healthcare visit in the past year were advised to quit by a healthcare professional (95% C.I.  $\pm$  8%)
- 24% of tobacco users did not have a healthcare visit in the past year (95% C.I.  $\pm$  6%)
- 13% of smokers who have health insurance say that their insurance covers help in quitting smoking, such as counseling or nicotine patches (95% C.I.  $\pm$  7%)
- 43% of smokers with health insurance do not know if it covers help in quitting smoking (95% C.I.  $\pm$  11%)

### Priorities for Tobacco Prevention and Control

- Preventing Youth from Initiating Tobacco Use
- Increasing Tobacco Cessation
- Eliminating Exposure to Secondhand Smoke
- Identifying and Eliminating Tobacco-Related Disparities in High Risk Groups

#### Local Contact Information:

Katie Lindstrom (Oien)  
phone: (360) 875-9300 x 2636  
fax: 360-875-9323  
email: koien@co.pacific.wa.us

Pacific County Health & Human Services  
PO Box 26  
South Bend, WA 98586  
website: