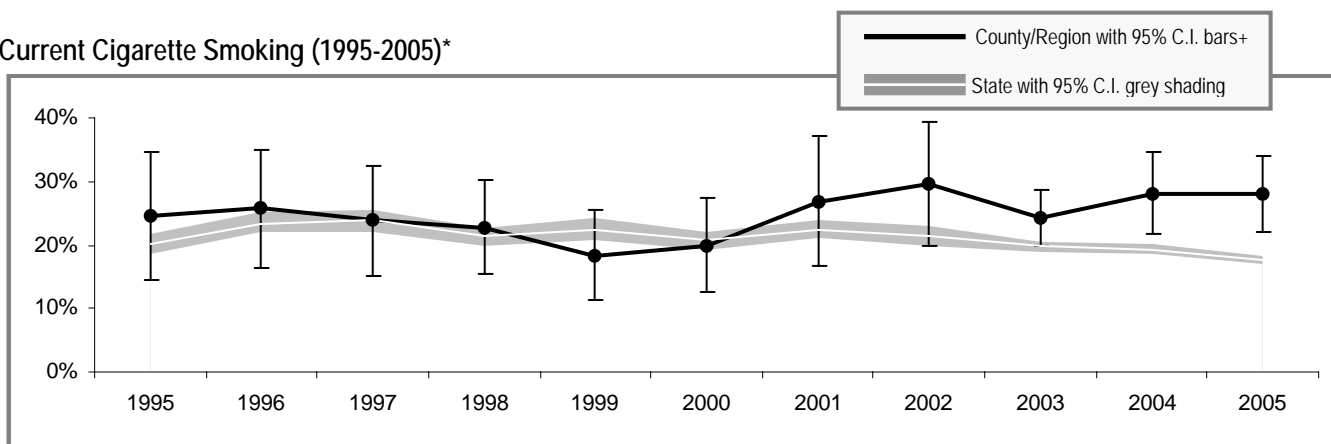


Pend Oreille County

Pend Oreille County

Adult Tobacco Use

Current Cigarette Smoking (1995-2005)*



* Smoking prevalence trend is based on English language surveys only. (Spanish language surveys began in 2003.)

+ Region includes Ferry, Pend Oreille, and Stevens counties. Prevalence is a 3-year rolling average through 2002; starting in 2003 smoking prevalence is based on single-year data.

Current Smoking (2005)**

	All adults
Pend Oreille County	24.9% (± 9.0%)
Washington State	17.5% (± 0.7%)

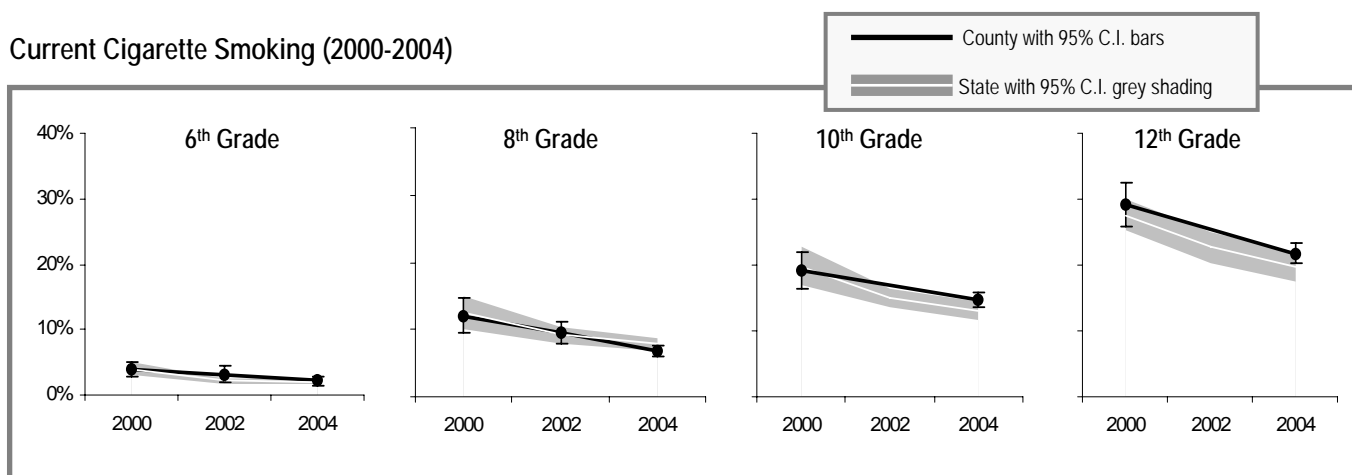
Current Smokeless Tobacco Use (2003-2005)**

	All adults	Males only
Pend Oreille County	6.4% (± 3.2%)	12.3% (± 6.1%)
Washington State	3.0% (± 0.3%)	5.8% (± 0.6%)

** Current smoking and smokeless prevalence include both English and Spanish language surveys.

Youth Tobacco Use

Current Cigarette Smoking (2000-2004)



Note: Regional prevalence is shown in this graph because county information was unavailable for two or more grades or years.

Current Smoking (2004)

	All 10 th Graders
Pend Oreille County	13.1% (± 5.7%)
Region**	14.7% (± 1.2%)
Washington State	13.0% (± 1.4%)

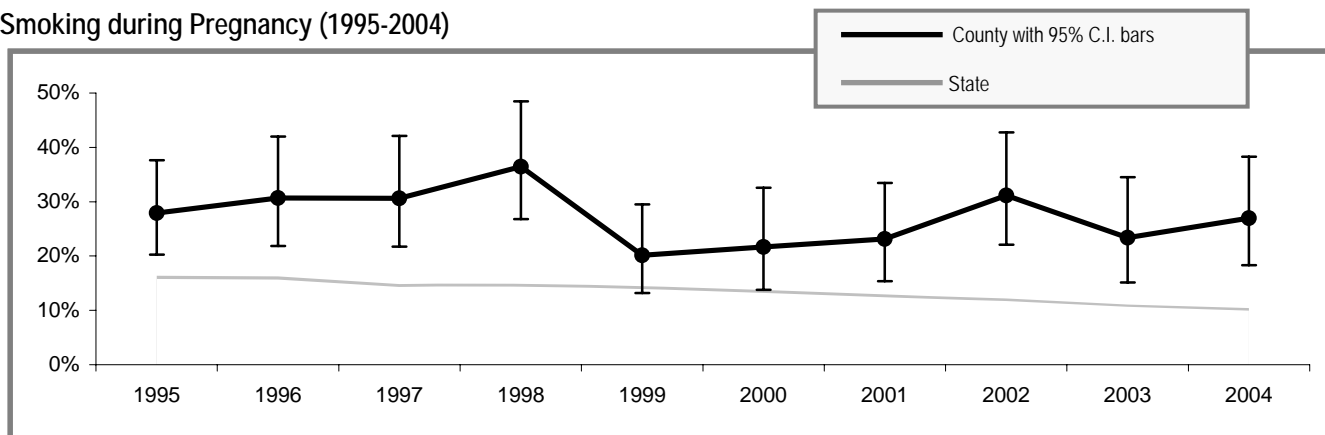
Current Smokeless Tobacco Use (2004)

	All 10 th Graders	10 th Grade Males only
Pend Oreille County	3.6% (± 3.1%)	NA
Region**	4.2% (± 0.6%)	9.4% (± 1.4%)
Washington State	4.9% (± 0.6%)	8.0% (± 1.2%)

** Region includes school districts in Adams, Ferry, Lincoln, Pend Oreille, Spokane, Stevens, and Whitman counties.

Tobacco Use by Pregnant Women

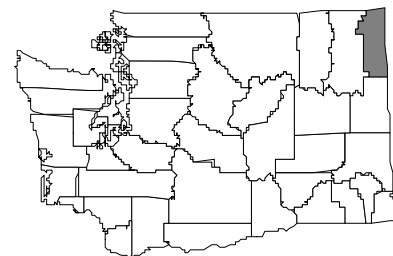
Smoking during Pregnancy (1995-2004)



People Affected in Pend Orielle County

2000 population: 11,732

- 2,200 adults smoke
- 600 adults use smokeless tobacco
- 30 infants are born annually to mothers who smoke during pregnancy
- 100 youth smoke
- 40 youth use smokeless tobacco
- 2,600 adults are exposed to secondhand smoke
- 700 youth are exposed to secondhand smoke
- 20 cancers diagnosed each year are smoking-related
- 20 adults die annually from smoking-related causes



Community Indicators for Pend Orielle County

- All restaurants and bars are now completely smokefree
- 73% of households have a ban on smoking (95% C.I. \pm 5%)
- 7% of retailers sold tobacco products to minors
- 31% of 10th graders say tobacco is "hard to get" (95% C.I. \pm 12%)
- 0 tobacco industry sampling event occurred in the past year – 0 samples were distributed
- 70 people called the Quitline in the past year
- 51% of smokers tried to quit in the past year (95% C.I. \pm 12%)
- 56% of tobacco users who had a healthcare visit in the past year were advised to quit by a healthcare professional (95% C.I. \pm 9%)
- 24% of tobacco users did not have a healthcare visit in the past year (95% C.I. \pm 7%)
- 23% of smokers who have health insurance say that their insurance covers help in quitting smoking, such as counseling or nicotine patches (95% C.I. \pm 9%)
- 39% of smokers with health insurance do not know if it covers help in quitting smoking (95% C.I. \pm 11%)

Priorities for Tobacco Prevention and Control

- Preventing Youth from Initiating Tobacco Use
- Increasing Tobacco Cessation
- Eliminating Exposure to Secondhand Smoke
- Identifying and Eliminating Tobacco-Related Disparities in High Risk Groups

Local Contact Information:

Angie Jones
phone: 509-684-1301
fax: 509-684-1002
email: ajones@netchd.org

NE Tri-County Health Dept.
PO Box 270 or 240 E Dominion
Colville, WA 99114
website: