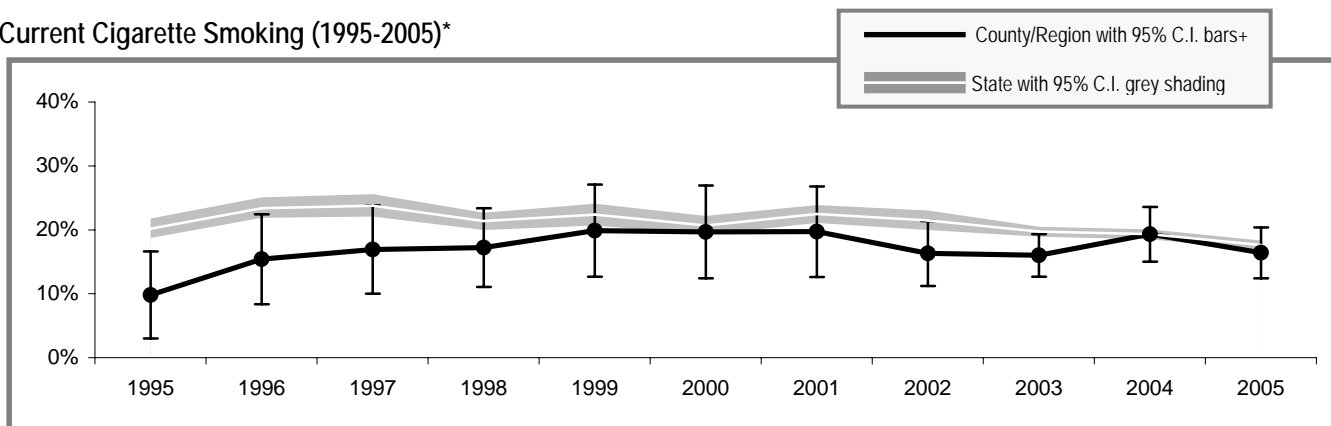


Whitman County

Whitman County

Adult Tobacco Use

Current Cigarette Smoking (1995-2005)*



* Smoking prevalence trend is based on English language surveys only. (Spanish language surveys began in 2003.)

+ Region includes Asotin, Columbia, Garfield, and Whitman counties. Prevalence is a 3-year rolling average through 2002; starting in 2003 smoking prevalence is based on single-year data.

Current Smoking (2005)**

	<u>All adults</u>
Whitman County	13.6% (± 5.3%)
Washington State	17.5% (± 0.7%)

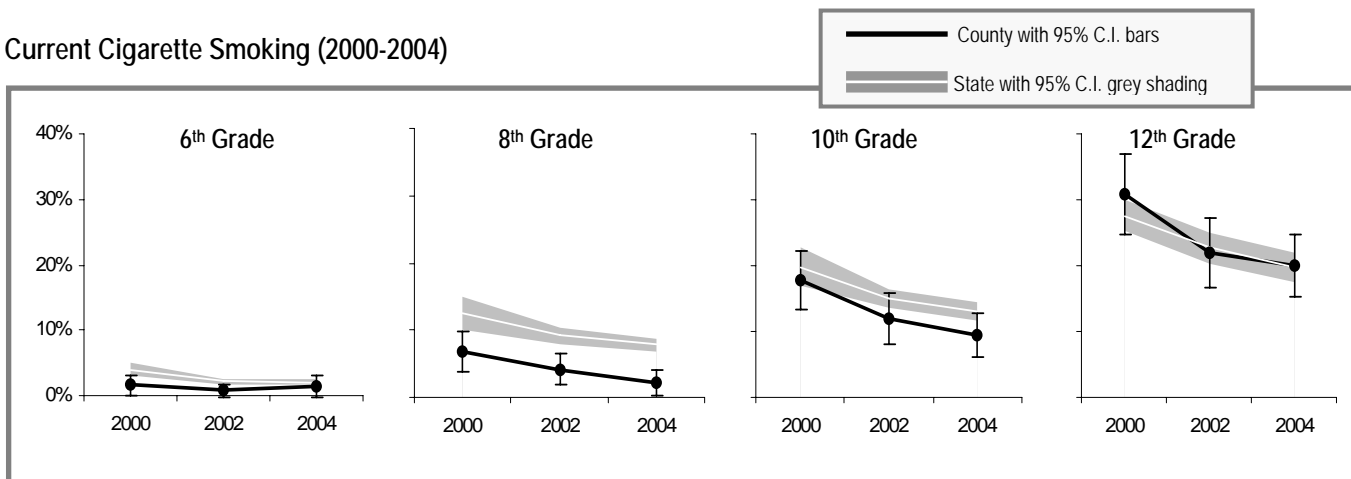
Current Smokeless Tobacco Use (2003-2005)**

	<u>All adults</u>	<u>Males only</u>
Whitman County	4.9% (± 2.2%)	8.9% (± 4.0%)
Washington State	3.0% (± 0.3%)	5.8% (± 0.6%)

** Current smoking and smokeless prevalence include both English and Spanish language surveys.

Youth Tobacco Use

Current Cigarette Smoking (2000-2004)



Current Smoking (2004)

	<u>All 10th Graders</u>
Whitman County	9.4% (± 3.3%)
Region**	14.7% (± 1.2%)
Washington State	13.0% (± 1.4%)

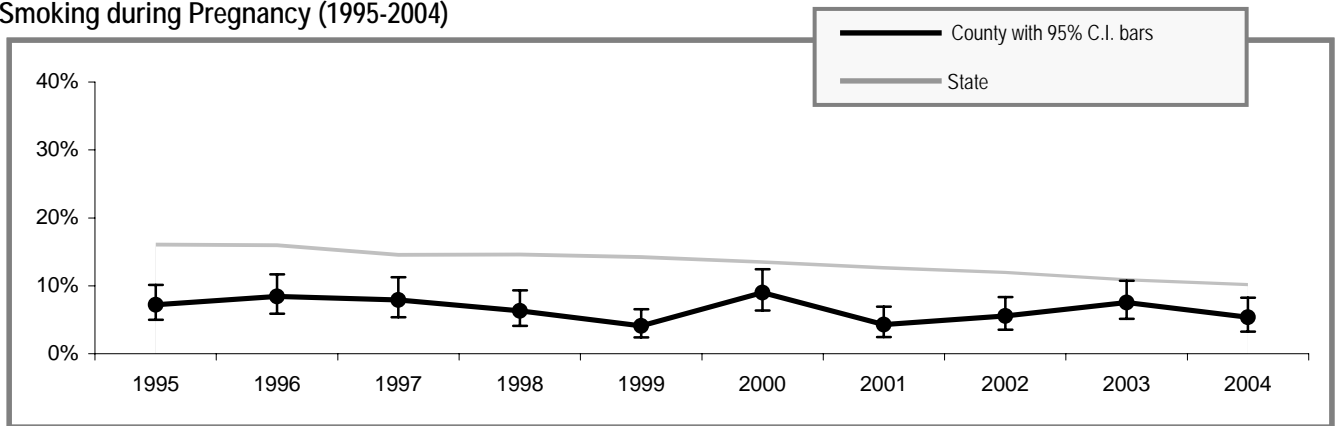
Current Smokeless Tobacco Use (2004)

	<u>All 10th Graders</u>	<u>10th Grade Males only</u>
Whitman County	5.2% (± 2.5%)	NA
Region**	4.2% (± 0.6%)	9.4% (± 1.4%)
Washington State	4.9% (± 0.6%)	8.0% (± 1.2%)

** Region includes school districts in Adams, Ferry, Lincoln, Pend Oreille, Spokane, Stevens, and Whitman counties.

Tobacco Use by Pregnant Women

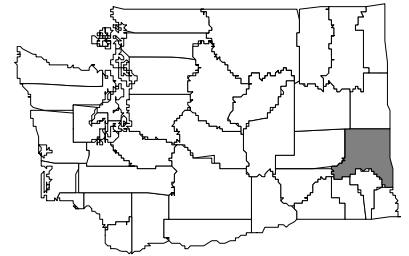
Smoking during Pregnancy (1995-2004)



People Affected in Whitman County

2000 population: 40,740

- 4,500 adults smoke
- 1,600 adults use smokeless tobacco
- 20 infants are born annually to mothers who smoke during pregnancy
- 200 youth smoke
- 100 youth use smokeless tobacco
- 5,200 adults are exposed to secondhand smoke
- 600 youth are exposed to secondhand smoke
- 20 cancers diagnosed each year are smoking-related
- 40 adults die annually from smoking-related causes



Community Indicators for Whitman County

- All restaurants and bars are now completely smokefree
- 85% of households have a ban on smoking (95% C.I. \pm 3%)
- 0% of retailers sold tobacco products to minors
- 45% of 10th graders say tobacco is "hard to get" (95% C.I. \pm 8%)
- 18 tobacco industry sampling event occurred in the past year – 716 samples were distributed
- 45 people called the Quitline in the past year
- 58% of smokers tried to quit in the past year (95% C.I. \pm 12%)
- 56% of tobacco users who had a healthcare visit in the past year were advised to quit by a healthcare professional (95% C.I. \pm 9%)
- 24% of tobacco users did not have a healthcare visit in the past year (95% C.I. \pm 7%)
- 26% of smokers who have health insurance say that their insurance covers help in quitting smoking, such as counseling or nicotine patches (95% C.I. \pm 13%)
- 41% of smokers with health insurance do not know if it covers help in quitting smoking (95% C.I. \pm 15%)

Priorities for Tobacco Prevention and Control

- Preventing Youth from Initiating Tobacco Use
- Increasing Tobacco Cessation
- Eliminating Exposure to Secondhand Smoke
- Identifying and Eliminating Tobacco-Related Disparities in High Risk Groups

Local Contact Information:

Tammy Cochrane
phone: 509-397-6280
fax: 509-397-6239
email: tammyc@co.whitman.wa.us

Whitman County Public Health
310 N Main Street
Colfax, WA 99111
website: