

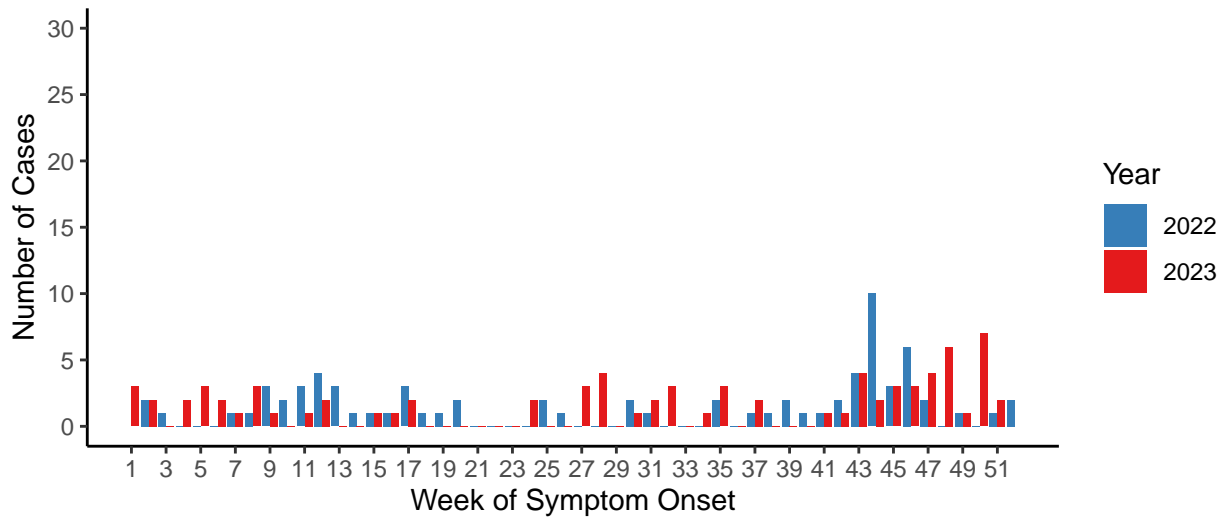
# Annual Pertussis Summary for Washington State, 2023 (Preliminary data)

Washington State Department of Health

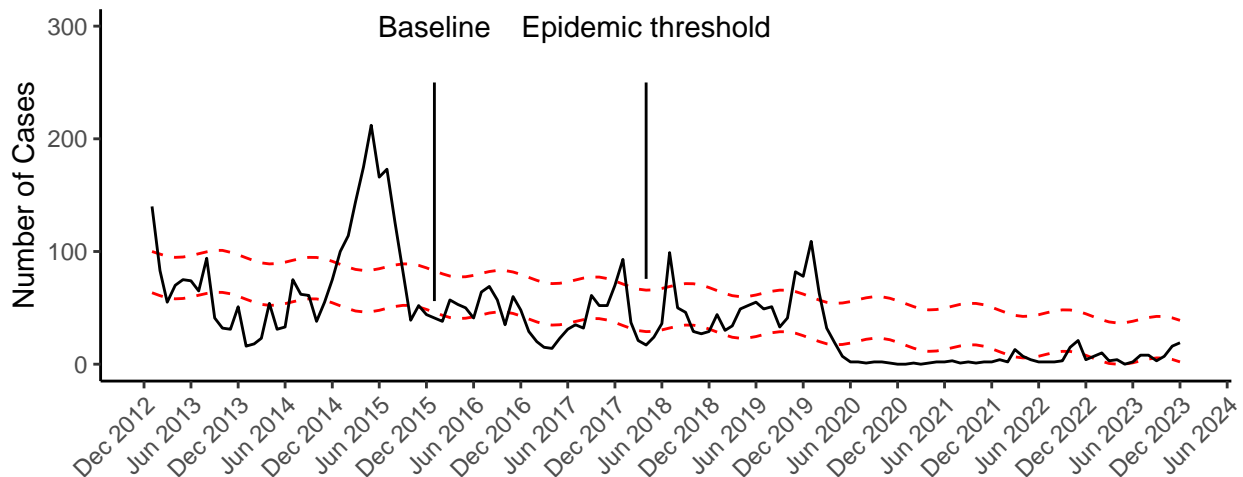
This update summarizes all reports of pertussis in persons with illness onset dates during 2023. The included reports were received by local health jurisdictions (LHJs) and reported to Washington State Department of Health (DOH) – Communicable Disease Epidemiology. This report was created as a **preliminary summary**, as 2023 data is still in the process of being finalized. Information presented in this report may therefore be subject to change.

There were a total of 87 confirmed and probable pertussis cases reported statewide in 2023, compared to 76 cases reported in 2022. Dates for the 2022/2023 comparison are based primarily on symptom onset dates. For information about pertussis case counts in prior years, please refer to DOH’s [Communicable Disease Annual Reports](#) or the [Annual Pertussis Reports](#).

**Figure 1:** Number of Pertussis Cases Reported in Washington State by Week of Symptom Onset: 2022 (blue) vs 2023 (red)



**Figure 2:** WA State Pertussis Cases Reported by Month and Year (black) with Projected Baseline and Epidemic Thresholds (red dashed lines), 2013-2022, with 2023 data overlaid



**Table 1:** WA State Pertussis Cases by Age Group, 2023 (preliminary data)

Age Group	OFM 2020 Population	Number of Cases	Rate per 100,000 persons	% of cases by age group*
< 1	89,038	8	9.0	9
1 - 4	360,093	24	6.7	28
5 - 9	481,675	13	2.7	15
10 - 13	390,105	7	1.8	8
14 - 18	468,897	12	2.6	14
19 - 24	593,072	0	0.0	0
25 - 44	2,086,393	10	0.5	11
45 - 64	1,905,515	7	0.4	8
65+	1,281,417	6	0.5	7
All ages	7,656,205	87	1.1	100

\*Due to rounding, percentages may not always add up to 100%

The overall annual incidence rate was 1.1 pertussis case per 100,000 Washington residents, with an incidence rate among infants under one year of age of 9 cases per 100,000 (see Table 1). Infants under one year of age are among the most vulnerable to severe pertussis disease.

Among the 8 infants who had pertussis in 2022, none had received any doses of pertussis-containing vaccine. All of these infants were old enough to receive at least one dose.

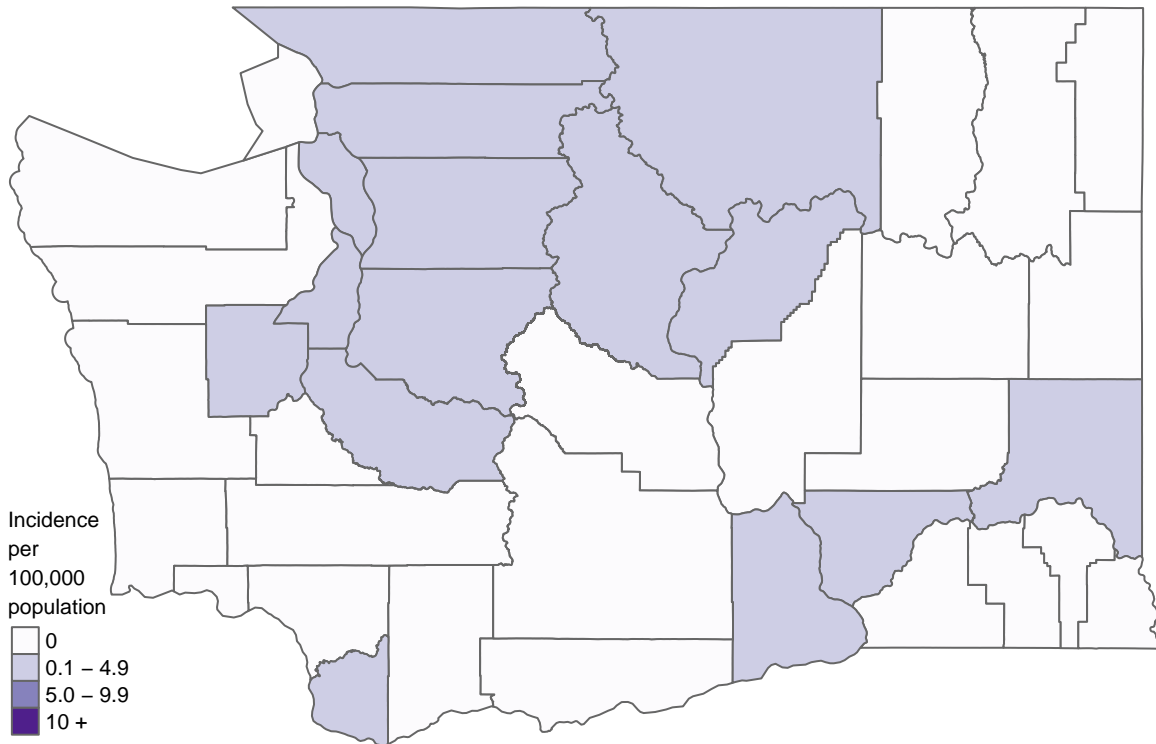
**Table 2:** WA State Pertussis Cases by County, 2023 (preliminary data)

County	Number of Cases	OFM 2020 Population	Rate per 100,000 persons
King	28	2,260,801	1.2
Clark	15	499,193	3.0
Pierce	14	900,697	1.6
Whatcom	10	228,002	4.4
Snohomish	4	830,503	0.5
Benton	3	205,699	1.5
Kitsap	3	272,197	1.1
Franklin	2	96,758	2.1
Skagit	2	130,453	1.5
Chelan	1	79,656	1.3
Douglas	1	43,743	2.3
Island	1	85,529	1.2
Mason	1	65,654	1.5
Okanogan	1	43,135	2.3
Whitman	1	50,485	2.0

Among the 15 counties with reported pertussis activity in 2023, the number of pertussis cases in a given county ranged from 1 to 28 and county-level annual incidence rates ranged from 0.5 to 4.4 per 100,000 persons (see Table 2).

- The median and mean county-level year-to-date incidence rates in counties reporting pertussis activity are 1.5 and 1.8 per 100,000 persons, respectively.
- 24 counties had zero reported pertussis cases during 2023.

**Figure 3:** Annual Pertussis Incidence Rates by County, 2023 (preliminary data)



*NOTE: To request this document in another format, call 1-800-525-0127. Deaf or hard of hearing customers, please call 711 (Washington Relay) or email [doh.information@doh.wa.gov](mailto:doh.information@doh.wa.gov).*